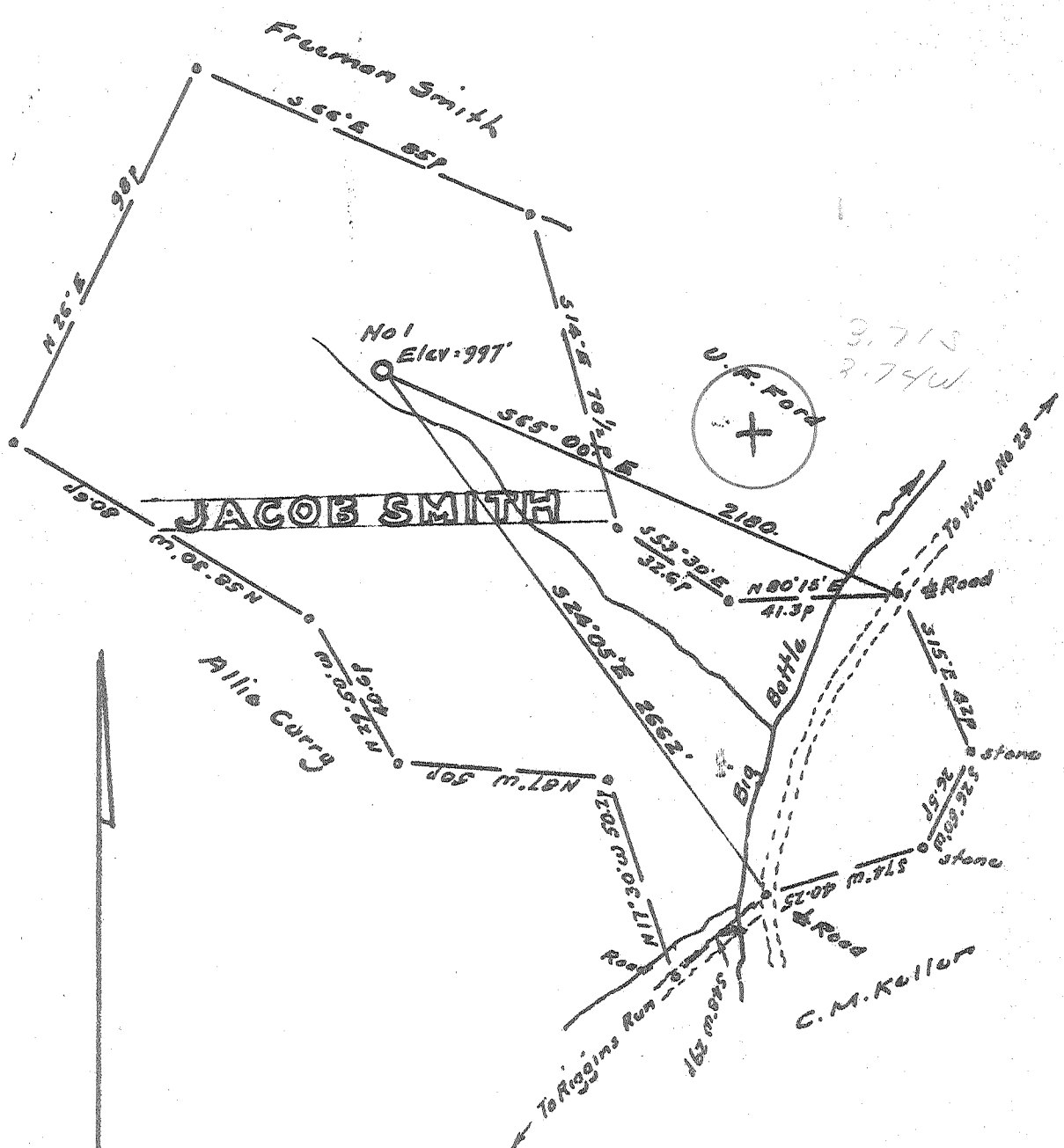


39 25

LATITUDE 39° 25'

LONGITUDE 80° 35'

80 35



Minimum Error of Closure 1 in 200'  
 Source of Elevation B.M. Centerpoint - 790

I, the undersigned, hereby certify that this map is correct to the best of my knowledge and belief and shows all the information required by paragraph 6 of the rules and regulations of the oil and gas section of the mining laws of West Virginia.

- Fracture.....
- New Location.....
- Drill Deeper.....
- Abandonment.....

Signed: [Signature]  
 Squares: N S E W

Map No. \_\_\_\_\_

Company Scott Enterprises, Inc.  
 Address Solum, W. Va.  
 Farm Jacob E. Smith  
 Tract \_\_\_\_\_ Acres 127 Lease No. \_\_\_\_\_  
 Well (Farm) No. One Serial No. S-160  
 Elevation (Spirit Level) 997  
 Quadrangle Centerpoint  
 County Putnam District McClellan  
 Engineer [Signature]  
 Engineer's Registration No. 1227  
 File No. \_\_\_\_\_ Drawing No. \_\_\_\_\_  
 Date Sept 14, 1971 Scale 1" = 400' = 660'

STATE OF WEST VIRGINIA  
 DEPARTMENT OF MINES  
 OIL AND GAS DIVISION  
 CHARLESTON

**WELL LOCATION MAP**  
 FILE NO. 000-1644

+ Denotes location of well on United States Topographic Maps, scale 1 to 62,500, latitude and longitude lines being represented by border lines as shown.  
 - Denotes one inch spaces on border line of original tracing.

29-30  
5-43



RECEIVED

OCT 28 1971

STATE OF WEST VIRGINIA OIL & GAS DIVISION  
DEPARTMENT OF MINES  
OIL AND GAS WELLS DIVISION

Rotary   
Spudder   
Cable Tools   
Storage   
Oil or Gas Well  Gas (KIND)

Quadrangle Center Point

WELL RECORD

Permit No. DOD-1644

Company Scott Enterprises, Inc.  
Address Salem, West Virginia  
Farm Jacob Smith Acres 127  
Location (waters) Big Battle  
Well No. 1 Elev. 997  
District McClellan County Doddridge  
The surface of tract is owned in fee by Gay Ford  
Big Battle Road Address West Union, W. Va.  
Mineral rights are owned by Jacob C. Smith

Casing and Tubing	Used in Drilling	Left in Well	Packers
Size			Kind of Packer
16			
13			Size of
10			Depth set
8 1/4	662	662	
6 1/4			Perf. top
5 3/16	2001	2001	Perf. bottom
4 1/2			Perf. top 1950
3			Perf. bottom 1956
2			
Liners Used			

Drilling commenced 10-1-71  
Drilling completed 10-5-71  
Date Shot From To  
With  
Open Flow /10ths Water in Inch  
/10ths Merc. in Inch  
Volume Cu. Ft.  
Rock Pressure lbs. hrs.  
Oil bbls., 1st 24 hrs.  
WELL ACIDIZED (DETAILS)  
WELL FRACTURED (DETAILS) 1000 bbls. of water, 46,000 lbs. sand

Attach copy of cementing record.  
CASING CEMENTED 4 1/2" SIZE 2001 No. Ft. 10-5-71 Date  
Amount of cement used (bags) 75  
Name of Service Co. Dowell  
COAL WAS ENCOUNTERED AT 325 FEET INCHES  
621 FEET INCHES FEET INCHES  
FEET INCHES FEET INCHES

RESULT AFTER TREATMENT (Initial open Flow or bbls.)  
ROCK PRESSURE AFTER TREATMENT 290  
Fresh Water 50 Feet  
Producing Sand Big Injun

270,000 cu. ft.  
HOURS 48  
Salt Water Feet  
Depth 1950

Formation	Color	Hard or Soft	Top	Bottom	Oil, Gas or Water	Depth	Remarks
Sand			0	50	water		
Lime			50	53			
Sand			53	110			
Shale			110	180			
Sand			180	230			
Lime			230	300			
Slate			300	325			
Coal			325	328			
Slate			328	405			
Sand			405	480			
Shale			480	550			
Red rock			550	580			
Slate			580	621			
Coal			621	628			
Slate			628	680			
Sand			680	750			
Lime			750	820			
Shale			820	910			
Red rock			910	1010			
Sand	2		1010	1090			
Lime			1090	1160			
Slate			1160	1240			
Sand			1240	1320			
Red rock			1320	1400			
Slate			1400	1470			
Sand			1470	1540			
Shale			1540	1620			
Red rock			1620	1695			

(over)

Formation	Color	Hard or Soft	Top $\epsilon$	Bottom	Oil, Gas or Water	Depth Found	Remarks
Sand			1695	1730			
Red rock			1790	1852			
Big Lime			1852	1938			
Sand	Big Injun		1938	2003			
T D				2003			

Date October 26, 197  
 APPROVED James T. Scott, Own  
 By Pres. Scott Enterprises  
 (Title)