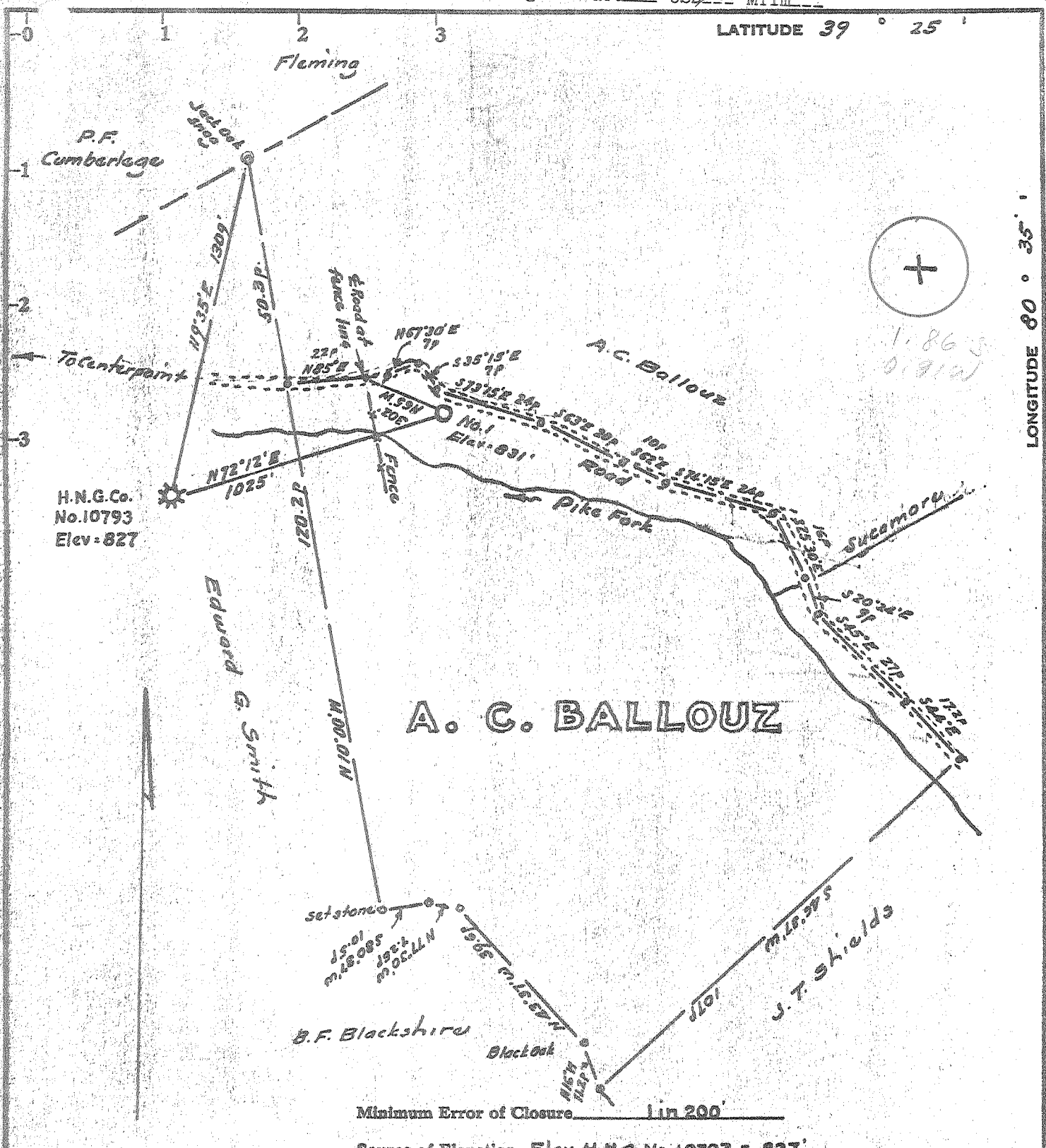


LATITUDE 39° 25'

LONGITUDE 80° 35'



Minimum Error of Closure 1 in 200'

Source of Elevation Elev. H.N.G. No. 10793 = 827'

- Fracture
- New Location
- Drill Deeper
- Abandonment

I, the undersigned, hereby certify that this map is correct to the best of my knowledge and belief and shows all the information required by paragraph 6 of the rules and regulations of the oil and gas section of the mining laws of West Virginia.

Signed: *Michael J. [Signature]*
Squares: N S E W

Map No. _____

Company JOHN R. WARREN, dba, WARREN OIL & GAS CO.

Address United Founders Tower, Oklahoma City, Oklahoma

Farm A.C. Ballowz

Tract Acres 81.7 Lease No. _____

Well (Farm) No. One Serial No. _____

Elevation (Spirit Level) 831.0

Quadrangle Centerpoint

County Doddridge District McClellan

Engineer Michael J. [Signature]

Engineer's Registration No. 1227

File No. _____ Drawing No. _____

Date August 13, 1971 Scale 1" = 300' = 495'

STATE OF WEST VIRGINIA
DEPARTMENT OF MINES
OIL AND GAS DIVISION
CHARLESTON

WELL LOCATION MAP

FILE NO. 000-1637

+ Denotes location of well on United States Topographic Maps, scale 1 to 62,500, latitude and longitude lines being represented by border lines as shown.

— Denotes one inch spaces on border line of original tracing.

27-30
5-24



RECEIVED

NOV 1 1971 Rotary
 Spudder
 Cable Tools
 Storage

STATE OF WEST VIRGINIA
 DEPARTMENT OF MINES & GAS DIVISION
 DEPT. OF MINES
 OIL AND GAS WELLS DIVISION

C. HOLL

Quadrangle Centerpoint NW

WELL RECORD

Oil or Gas Well Gas (KIND)

Permit No. DOD - 1637

Company John R. Warren dba Warren Drilling Co.
 Address 1215 United Founders Building
Oklahoma City, Okla. 73112
 Farm A.C. Ballouz Acres 81.7
 Location (waters) Pike Fork
 Well No. One Elev. 831'
 District McClellam County Doddridge
 The surface of tract is owned in fee by Col. Troutman
Wash., D.C.
 Mineral rights are owned by A.C. Ballouz Hrs.
Mannington, W. Va.
 Drilling commenced 9/22/71
 Drilling completed 9/26/71
 Date Shot No From To

Casing and Tubing	Used in Drilling	Left in Well	Packers
Size			Kind of Packer
16			
13			
10			Size of
8 1/4	436	436	Cemented to Sur.
6 3/4			Depth set
5 3/16			
4 1/2	1888	1888	
3			Perf. top
2		1750	Perf. bottom
Liners Used			Perf. top <u>1781</u> } <u>Big</u> Perf. bottom <u>785</u> } <u>Int</u>

With Open Flow /10ths Water in Drilled w/Mud Inch
 /10ths Merc. in Inch
 Volume Cu. Ft.
 Rock Pressure lbs. hrs.
 Oil bbls., 1st 24 hrs.
 WELL ACIDIZED (DETAILS)

Attach copy of cementing record.
 CASING CEMENTED 4 1/2" SIZE 1888 No. Ft. 9/26/71 Date
 Amount of cement used (bags) 60 sks. Common w/ # Floceal
 Name of Service Co. Halliburton (437968)
 COAL WAS ENCOUNTERED AT 152 FEET ? INCHES
400 FEET 62 INCHES FEET INCHES
 FEET INCHES FEET INCHES

WELL FRACTURED (DETAILS) 1125 Bbls. water; 58000 # sand; 31 B/min. at 2420 psi

RESULT AFTER TREATMENT (Initial open Flow or bbls.) 1,150 mcf. 1,150,000
 ROCK PRESSURE AFTER TREATMENT 420 HOURS 48
 Fresh Water surface 20' Feet Salt Water Drilled w/Mud Feet
 Producing Sand Injun Depth 1781-85'

Formation	Color	Hard or Soft	Top	Bottom	Oil, Gas or Water	Depth	Remarks
Gravel			0	20			
shale			20	40			
sand & shale			40	147			
red rock & shale			147	150	water		
shale black			150	161			
lime, sand, shale			161	231			
lime			231	400			
coal			400	406			
shale, sand			406	435			
sand & shale			435	720			
sand, shales			720	1144			
sand, shales			1144	1475			
sand, shale			1475	1685			
lime			1685	1730			
sand			1730	1890			
sand			1890	1905			
TD			1905				

INJUN