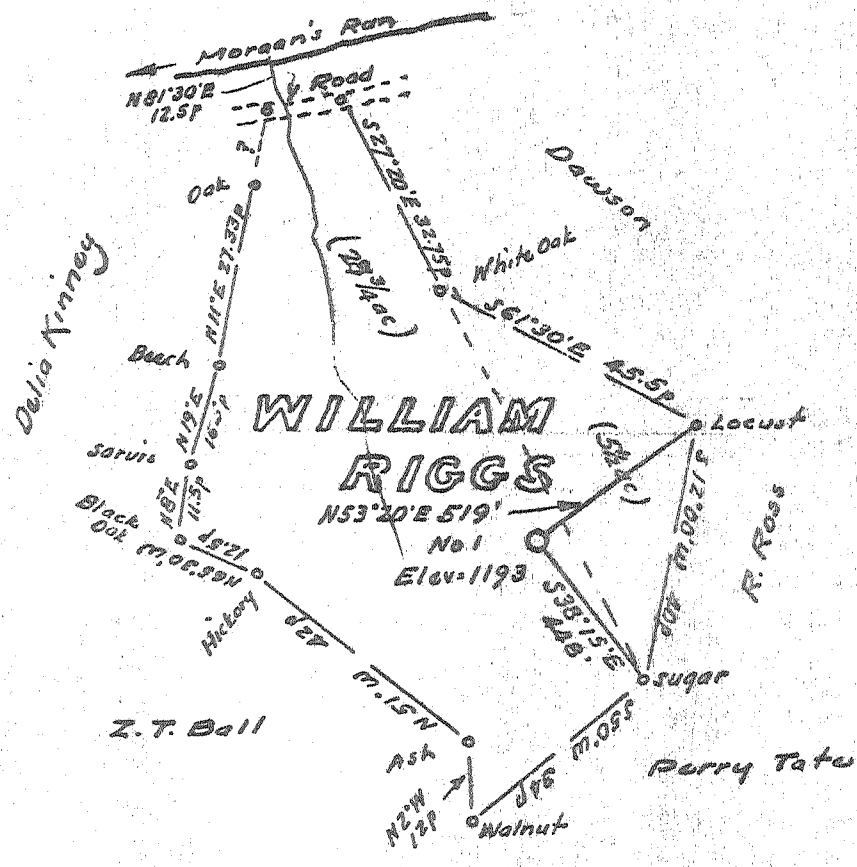


8-10-71 Lodd

LATITUDE 39° 20'

LONGITUDE 80° 40'



Minimum Error of Closure 1 in 200'

Source of Elevation Elev. Manser Kinney No. 1 = 1019

- Fracture.....
- New Location.....
- Drill Deeper.....
- Abandonment.....

I, the undersigned, hereby certify that this map is correct to the best of my knowledge and belief and shows all the information required by paragraph 6 of the rules and regulations of the oil and gas section of the mining laws of West Virginia.

Signed: W. H. Hoel  
Squares: N S E W

Company Scott Enterprises, Inc.  
 Address Salern, West Va.  
 Farm William Riggs  
 Tract \_\_\_\_\_ Acres 34.25 Lease No. \_\_\_\_\_  
 Well (Farm) No. One Serial No. \_\_\_\_\_  
 Elevation (Spirit Level) 1193'  
 Quadrangle Centerpoint SW  
 County Doddridge District Grant  
 Engineer W. H. Hoel  
 Engineer's Registration No. 1227  
 File No. \_\_\_\_\_ Drawing No. \_\_\_\_\_  
 Date August 2, 1971 Scale 1" = 300' = 495'

STATE OF WEST VIRGINIA  
 DEPARTMENT OF MINES  
 OIL AND GAS DIVISION  
 CHARLESTON

**WELL LOCATION MAP**

FILE NO. Dodd-1633

+ Denotes location of well on United States Topographic Maps, scale 1 to 62,500, latitude and longitude lines being represented by border lines as shown.  
 — Denotes one inch spaces on border line of original tracing.

TRASCO



RECEIVED

SEP 20 1971

STATE OF WEST VIRGINIA  
DEPARTMENT OF MINES  
OIL AND GAS WELLS DIVISION

- Rotary
- Spudger
- Cable Tools
- Storage

Quadrangle Center Point

Permit No. DOD-1633

WELL RECORD

Oil or Gas Well Gas (KIND)

Company Scott Enterprises, Inc.  
Address P.O. Box 112, Salem, W. Va.  
Farm William Riggs Acres 34  
Location (waters) Morgans Run  
Well No. 1 Elev. 1193  
District Grant County Doddridge  
The surface of tract is owned in fee by Preston Holden, Heirs  
Address West Union, W. Va.  
Mineral rights are owned by Preston Holden, Heirs  
Address West Union, W. Va.  
Drilling commenced 8-13-71  
Drilling completed 8-17-71  
Date Shot From To  
With

Casing and Tubing	Used in Drilling	Left in Well	Packers
Size			Kind of Packer
16.			
13.			
10.			Size of
8 1/4	579	579	
6 5/8			Depth set
5 3/16			
4 1/2	2088	2088	
3.			Perf. top 1958
2.			Perf. bottom 1992
Liners Used			Perf. top
			Perf. bottom

Open Flow /10ths Water in Inch  
/10ths Merc. in Inch  
Volume Cu. Ft.  
Rock Pressure lbs. hrs.  
Oil bbls., 1st 24 hrs.  
WELL ACIDIZED (DETAILS)  
WELL FRACTURED (DETAILS) 40,000 lbs. of sand with 750 bbls. water

Attach copy of cementing record.  
CASING CEMENTED 4 1/2" SIZE 2088 No. Ft. 8-18-71 Date  
Amount of cement used (bags) 75  
Name of Service Co. Dowell  
COAL WAS ENCOUNTERED AT 530 FEET INCHES  
FEET INCHES FEET INCHES  
FEET INCHES FEET INCHES

RESULT AFTER TREATMENT (Initial open Flow or bbls.) 1195 Mcf 1,195,000  
ROCK PRESSURE AFTER TREATMENT 600 HOURS 24  
Fresh Water 68 Feet 100 Salt Water Feet  
Producing Sand Big Injun Depth

Formation	Color	Hard or Soft	Top	Bottom	Oil, Gas or Water	Depth	Remarks
Sand			0	30			
Slate			30	70	water	68	
Sand			70	105	water	100	
Shells & slate			105	155			
Slate			155	215			
Sand			215	260			
Red rock			260	315			
Slate			315	360			
Sand			360	410			
Lime			410	480			
Slate			480	530			
Coal			530	537			
Red rock			537	580			
Sand			580	650			
Lime			650	730			
Slate			730	780			
Slate & shells			780	830			
Sand			830	900			
Lime			900	955			
Slate & lime			955	1010			
Red rock			1010	1060			
Sand			1060	1205			
Lime			1205	1270			
Slate & lime			1270	1320			
Slate			1320	1380			
Red rock			1380	1430			
Sand			1430	1490			
Slate			1490	1530			

(over)

Formation	Color	Hard or Soft	Top $\bar{8}$	Bottom	Oil, Gas or Water	Depth Found	Remarks
Sand			1530	1585			
Lime			1585	1640			
Slate			1640	1700			
Slate & shells			1700	1755			
Red rock			1755	1790			
Slate			1790	1832			
Lime (Big)			1832	1898			
Sand - Big Injan			1898	2088			
T D				2088			

Date September 17, 1971  
APPROVED Scott Enterprises, Inc., Owner  
By James F. Scott  
(Title)