

- Fracture.....
- Redrill.....
- New Location.
- Drill Deeper.....
- Abandonment.....

Source of Elevation ROAD FK. 040 USGS  
 I, the undersigned, hereby certify that this map is correct to the best of my knowledge and belief and shows all the information required by paragraph 6 of the rules and regulations of the oil and gas section of the mining laws of West Virginia.

Minimum accuracy. one part in 200

Company JOHN R. WARREN DR. WARREN DR. CO.  
 Address OKLAHOMA CITY, OKLAHOMA 73112  
 Farm W. T. SNIDER  
 Tract \_\_\_\_\_ Acres 171 Lease No. \_\_\_\_\_  
 Well (Farm) No. 3 Serial No. 1-Snyder  
 Elevation (Spirit Level) 367'  
 Quadrangle HOLBROOK NE 32-2. EC  
 County DODDRIDGE District SOUTHWEST  
 Engineer R. D. McMillan  
 Engineer's Registration No. LLS 105  
 File No. 220/1 Drawing No. \_\_\_\_\_  
 Date 6-26-71 Scale 1" = 500'

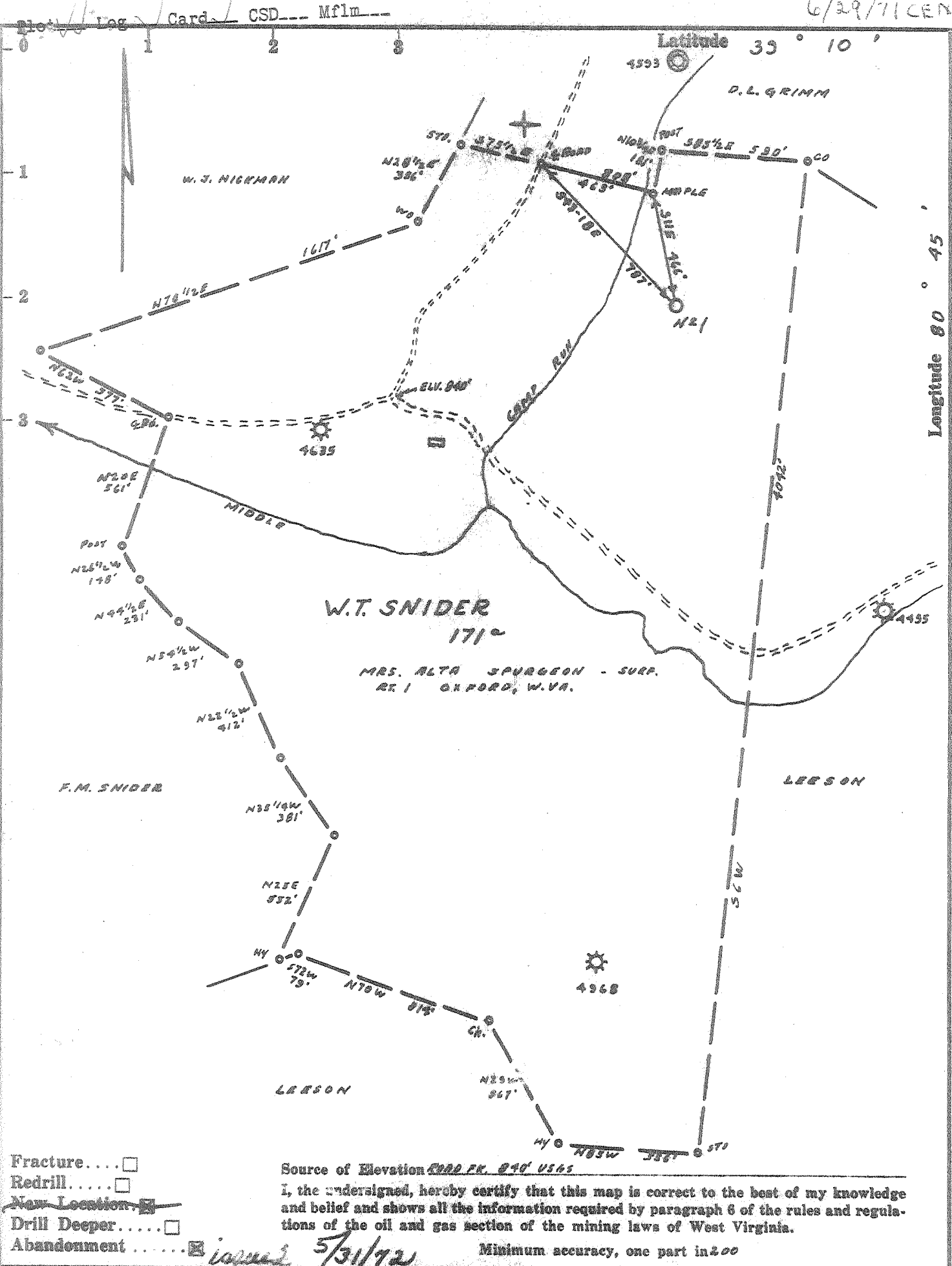
STATE OF WEST VIRGINIA  
 DEPARTMENT OF MINES  
 OIL AND GAS DIVISION  
 CHARLESTON

**WELL LOCATION MAP**  
 FILE NO. Dodd-1624-F  
 PLUGGING CANCELED

+ Denotes location of well on United States Topographic Maps, scale 1 to 62,500, latitude and longitude lines being represented by border lines as shown.

— Denotes one inch spaces on border line of original tracing.

6/29/71 CEN



- Fracture.....
- Redrill.....
- New Location.....
- Drill Deeper.....
- Abandonment.....

Source of Elevation ROAD PK. 040' USGS

I, the undersigned, hereby certify that this map is correct to the best of my knowledge and belief and shows all the information required by paragraph 6 of the rules and regulations of the oil and gas section of the mining laws of West Virginia.

Minimum accuracy, one part in 200

*J. D. Thomas*  
 Company JOHN L. WARREN & CO. WARREN DRILLING  
 Address OKLAHOMA CITY, OKLAHOMA 73102  
 Farm W. T. SNIDER  
 Tract \_\_\_\_\_ Acres 171 Lease No. \_\_\_\_\_  
 Well (Farm) No. 3 Serial No. 1-Snyder  
 Elevation (Spirit Level) 967'  
 Quadrangle HOLBROOK NE 32-2 EC  
 County DODDRIDGE District SOUTHWEST  
 Engineer R. J. Williams  
 Engineer's Registration No. LLS 105  
 File No. 220/1 Drawing No. \_\_\_\_\_  
 Date 6-26-71 Scale 1" = 500'

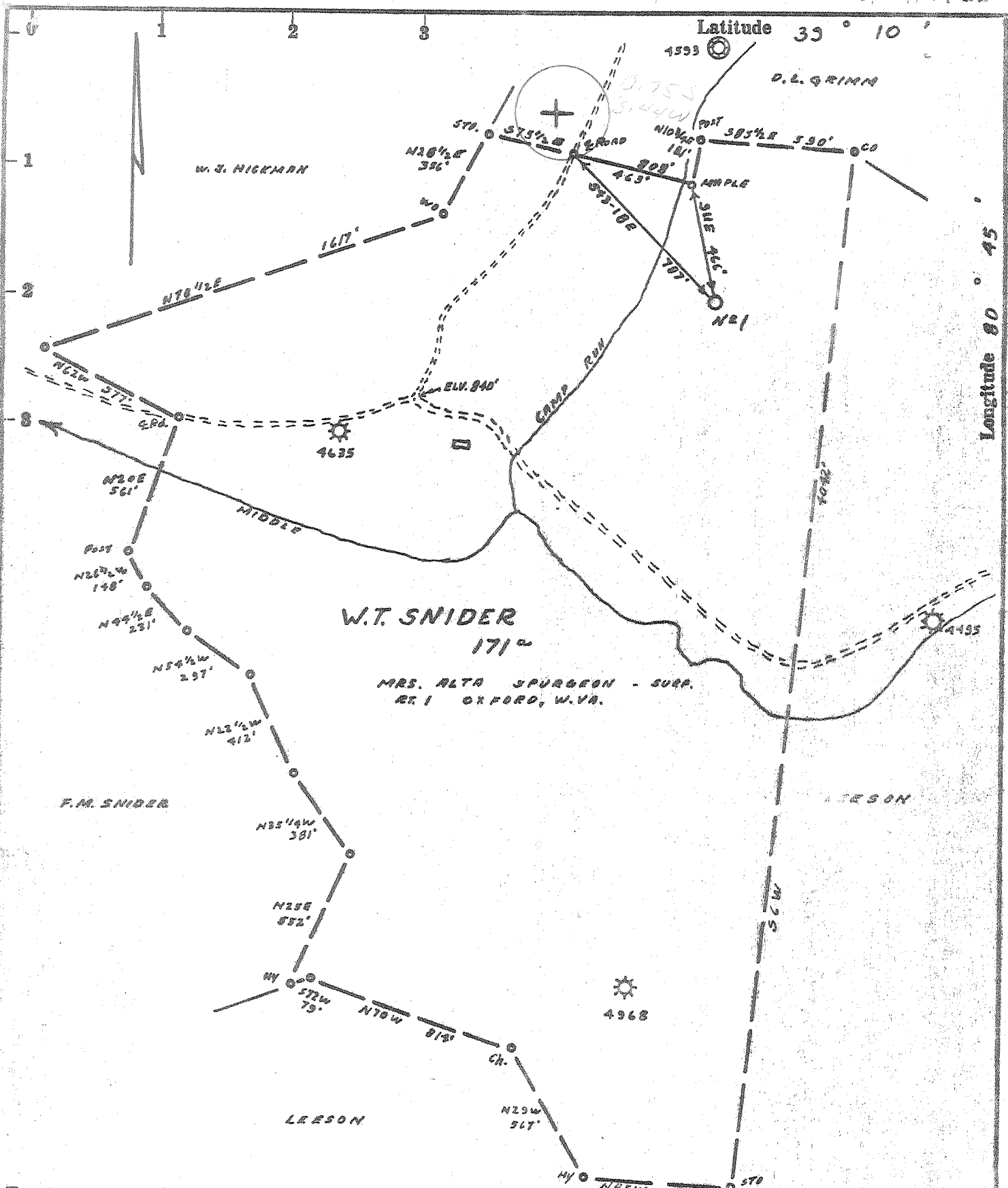
STATE OF WEST VIRGINIA  
 DEPARTMENT OF MINES  
 OIL AND GAS DIVISION  
 CHARLESTON

**WELL LOCATION MAP**  
 FILE NO. Dodd-1624-P

+ Denotes location of well on United States Topographic Maps, scale 1 to 62,500, latitude and longitude lines being represented by border lines as shown.

— Denotes one inch spaces on border line of original tracing.

JUN 15 1972



- Fracture....
- Redrill.....
- New Location.
- Drill Deeper.....
- Abandonment.....

Source of Elevation ROAD PK. 090 US65  
 I, the undersigned, hereby certify that this map is correct to the best of my knowledge and belief and shows all the information required by paragraph 6 of the rules and regulations of the oil and gas section of the mining laws of West Virginia.  
 Minimum accuracy, one part in 400

Company JOHN R. WARREN dba. WARREN DRL. CO.  
 Address OKLAHOMA CITY, OKLAHOMA 73112  
 Farm W.T. SNIDER  
 Tract Acres 171 Lease No. \_\_\_\_\_  
 Well (Farm) No. 3 Serial No. 1-Snyder  
 Elevation (Spirit Level) 967'  
 Quadrangle HOLBROOK NE32-2 EC  
 County DODDRIDGE District SOUTHWEST  
 Engineer R. J. McWilliams  
 Engineer's Registration No. LLS 105  
 File No. 220/1 Drawing No. \_\_\_\_\_  
 Date 6-26-71 Scale 1" = 500'

STATE OF WEST VIRGINIA  
 DEPARTMENT OF MINES  
 OIL AND GAS DIVISION  
 CHARLESTON

**WELL LOCATION MAP**  
 FILE NO. Dodd-1624

+ Denotes location of well on United States Topographic Maps, scale 1 to 62,500, latitude and longitude lines being represented by border lines as shown.  
 - Denotes one inch spaces on border line of original tracing.



SEP 20 1971

29-15

6-2

STATE OF WEST VIRGINIA DEPARTMENT OF MINES OIL AND GAS WELLS DIVISIONS

OIL & GAS DIVISION DEPT. OF MINES

- Rotary [ ] Spudder [ ] Cable Tools [X] Storage [ ]

ES. NO. 11

Quadrangle Holbrook NE

Permit No. DODD-1624

WELL RECORD

Oil or Gas Well Gas (KIND)

Company John R. Warren dba Warren Drilling Co. 1215 United Founders Building Oklahoma City, Okla. 73112 W.T. Snider Acres. 171 Mid. bk. of Hughes River One (1) Elev. 967' Southwest County Doddridge Mrs. Spurgeon Summers, W.Va. W.T. Snider et al Clarksburg, W.Va. 7/12/71 8/7/71 no From To

Table with columns: Casing and Tubing, Used in Drilling, Left in Well, Packers. Includes data for sizes 16, 13, 10, 8 1/4, 6 3/4, 5 3/16, 4 1/2, 3, 2 and packer details like Model A Baker and cemented to surface.

Open Flow /10ths Water in Inch /10ths Merc. in Inch Volume Cu. Ft. Rock Pressure lbs. hrs. Oil bbls., 1st 24 hrs. WELL ACIDIZED (DETAILS)

Attach copy of cementing record. CASING CEMENTED 4 1/2" SIZE 1838 No. Ft. 8/9/71 Date Amount of cement used (bags) 90 Type I Name of Service Co. Halliburton COAL WAS ENCOUNTERED AT FEET INCHES

WELL FRACTURED (DETAILS) Injun Sand: 550 Bbls. water, 150000# 20-40 sand, 21.8 B/M/ at 2980psi Maxon: 638 Bbls. water, 30000 # sand, 17.5 B/M. at 2175 psi RESULT AFTER TREATMENT (Initial open Flow or bbls.) Injun:= 775 mcf/day; Maxon:= 185 mcf/day ROCK PRESSURE AFTER TREATMENT Inj. 295 psi HOURS 12 hrs. Fresh Water Feet Max. 65 psi Salt Water Feet Producing Sand Big Injun and Maxon Sands Depth 1520 and 1751'

FEET INCHES FEET INCHES FEET INCHES 960,000 MCF total

Main stratigraphic log table with columns: Formation, Color, Hard or Soft, Top, Bottom, Oil, Gas or Water, Depth, Remarks. Lists various rock types like red rock, shale, slate, sand, lime, and shells.

(over)

Formation	Color	Hard or Soft	Top 5	Bottom	Oil, Gas or Water	Depth Found	Remarks
sand		hard	1335	1427			
slate	black		1427	1470			
sand			1470	1545	315mcf-56/10w2"	1520	Maxon(Salt)
slate	black		1545	1615			
red rock			1615	1625			
slate			1625	1638			
lime			1638	1655			Little Lime
sandy slate			1655	1665			Pencil Cave
sand			1665	1679	show oil	1665-73	Blue Monday
lime			1679	1724			Big Lime
gritty lime			1724	1755			
sand			1755	1780	show oil&gas	1770-80'	Big Injun
gritty lime			1780	1791			
shale	black	gritty	1791	1810			
slate			1810	1940			
sand			1940	1956			Gantz
slate & shale			1956	2338			Gordon Stray
sand			2338	2346			
slate			2346	2353			Gordon
sand			2353	2368			
slate			2368	2374			
TD			2374				

Date 9/17/71, 19

APPROVED Warren Drilling Company, Owner

By  Consultant (Title)