

ACCURACY: 1P / 200P

Source of Elevation ROUTE #18 (847')

I, the undersigned, hereby certify that this map is correct to the best of my knowledge and belief and shows all the information required by paragraph 6 of the rules and regulations of the oil and gas section of the mining laws of West Virginia.

- New Location
- Drill Deeper
- Abandonment
- Fracture
- Redrill

Company WARREN-BRILLING COMPANY *Salem P. Co Supply Inc.*

Address OKLAHOMA CITY, OKLA. Rt. 1, Salem, W. Va. 26426

Farm (Vera) A. HAUGHT

Tract _____ Acres 134 Lease No. _____

Well (Farm) No. 1 Serial No. _____

Elevation (Spirit Level) 959'

Quadrangle VA015 WC

County DODDRIDGE District COVE

Engineer CHET WATERMAN

Engineer's Registration No. 3788

File No. 70003-467 Drawing No. _____

Date 12/3/70 Scale 1" = 40P

Chet Waterman

STATE OF WEST VIRGINIA
DEPARTMENT OF MINES
OIL AND GAS DIVISION
CHARLESTON

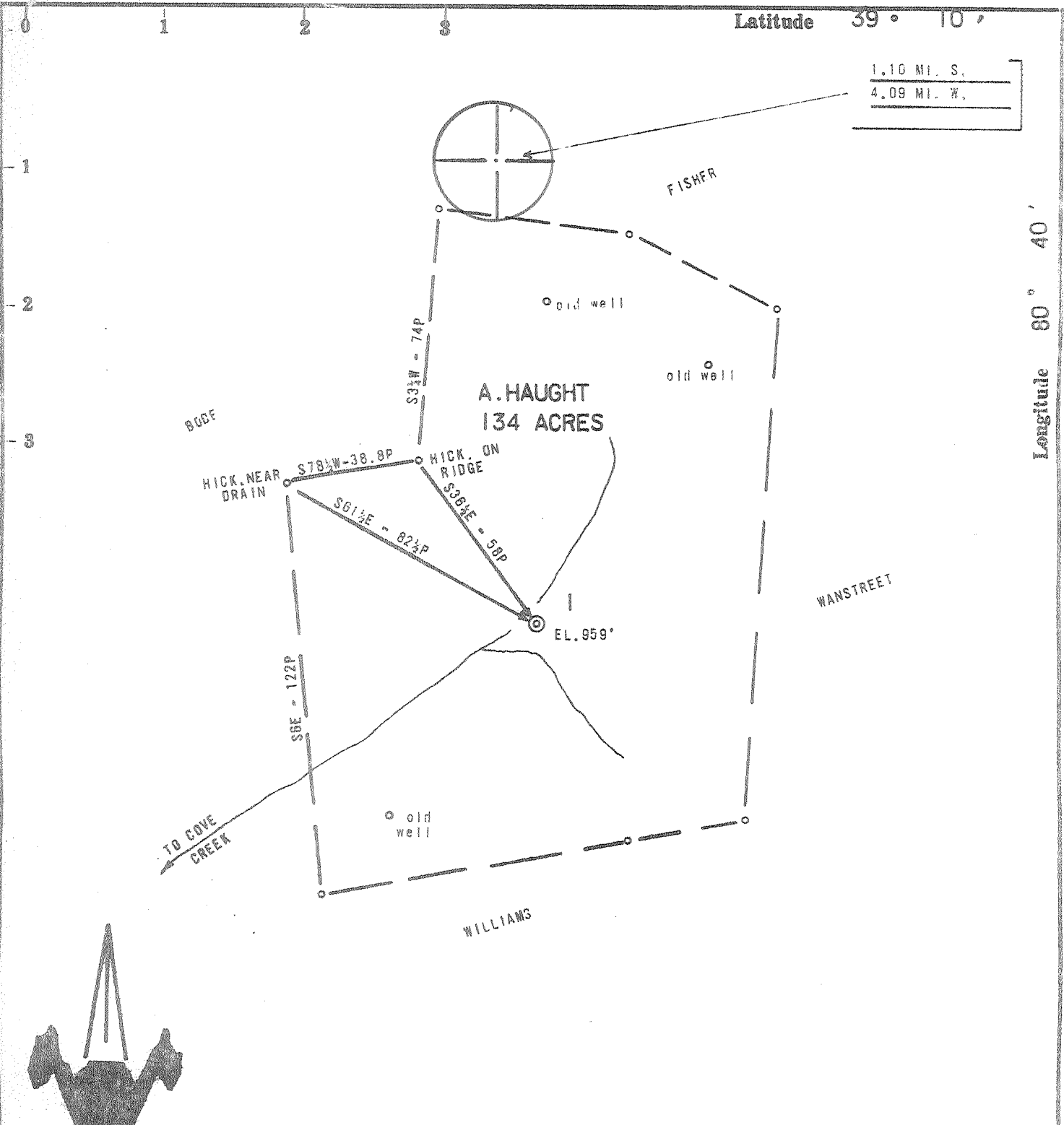
WELL LOCATION MAP
FILE NO. Dodd-1607-#
Plugging Cancelled

+ Denotes location of well on United States Topographic Maps, scale 1 to 62,500, latitude and longitude lines being represented by border lines as shown.

NOV 7 1977

- Denotes one inch spaces on border line of original tracing.

47-017



ACCURACY: 1P / 200P

Source of Elevation ROUTE #18 (847')

- New Location
- Drill Deeper
- Abandonment
- Fracture
- Redrill

I, the undersigned, hereby certify that this map is correct to the best of my knowledge and belief and shows all the information required by paragraph 6 of the rules and regulations of the oil and gas section of the mining laws of West Virginia.

issued 5/15/74

Chet Waterman

Company WILSON DRILLING COMPANY *Wilson Pipe Supply Inc.*

Address OKLAHOMA CITY, OKLA. Rt. 1, Salem, W. Va. 26426

Farm (Vera) A. HAUGHT

Tract Acres 134 Lease No.

Well (Farm) No. 1 Serial No.

Elevation (Spirit Level) 959'

Quadrangle VADIS *WC**

County DODDRIDGE District COVE

Engineer CHET WATERMAN

Engineer's Registration No. 3788

File No. 70003-467 Drawing No.

Date 12/3/70 Scale 1" = 40P

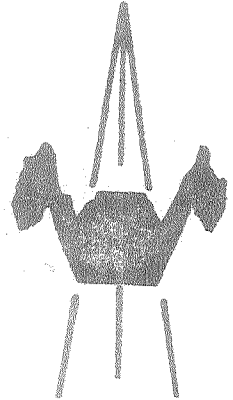
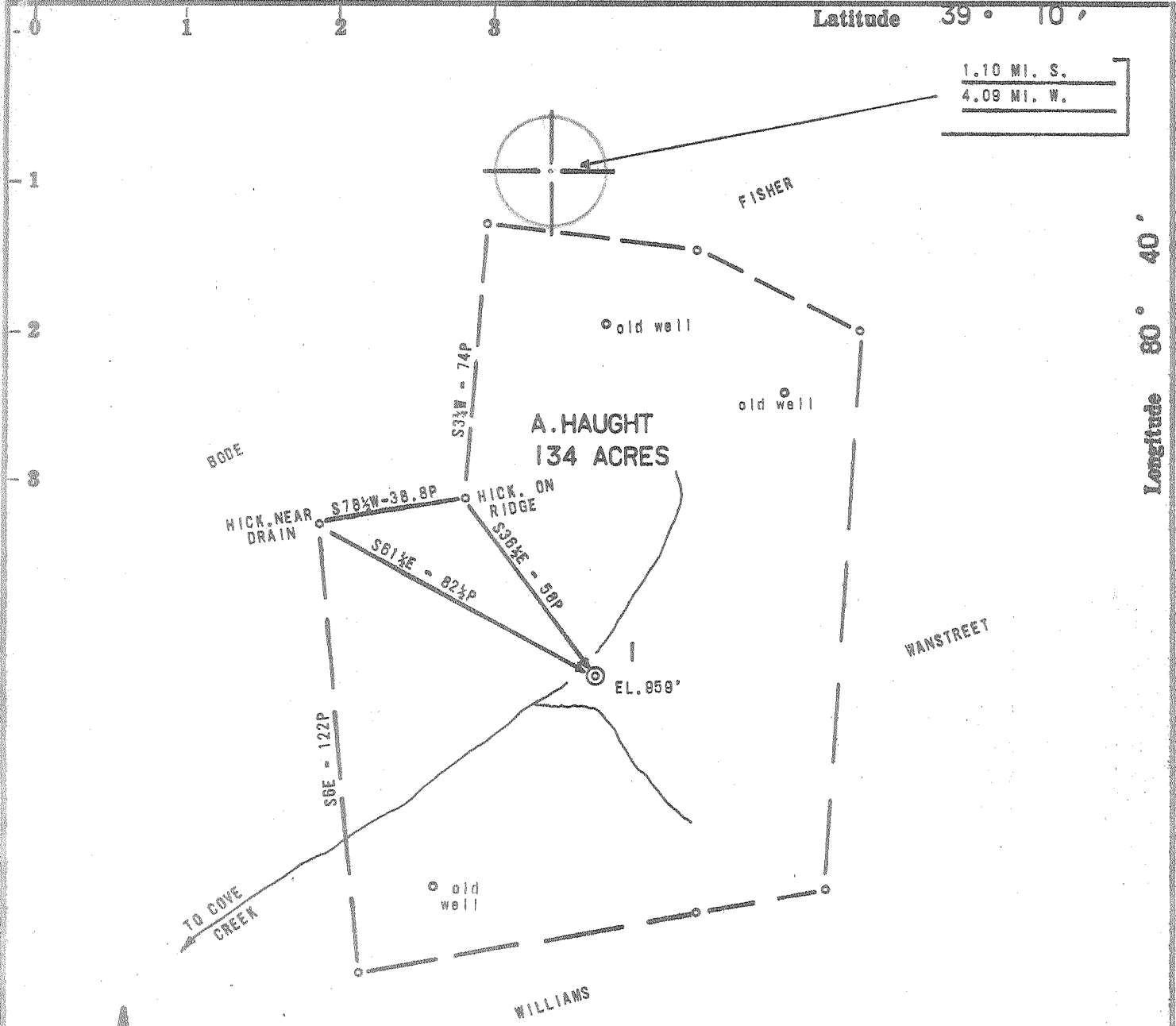
STATE OF WEST VIRGINIA
DEPARTMENT OF MINES
OIL AND GAS DIVISION
CHARLESTON

WELL LOCATION MAP
FILE NO. Dodd-1607-P

+ Denotes location of well on United States Topographic Maps, scale 1 to 62,500, latitude and longitude lines being represented by border lines as shown.

- Denotes one inch spaces on border line of original tracing.

47-017



ACCURACY: 1P / 200P

Source of Elevation ROUTE #18 (847')

- New Location
- Drill Deeper
- Abandonment
- Fracture
- Redrill

I, the undersigned, hereby certify that this map is correct to the best of my knowledge and belief and shows all the information required by paragraph 6 of the rules and regulations of the oil and gas section of the mining laws of West Virginia.

Chet Waterman

Company	JOHN WARREN, D/B/A WARREN DRILLING COMPANY	
Address	OKLAHOMA CITY, OKLA.	
Farm	A. HAUGHT	
Tract	Acres 134	Lease No.
Well (Farm) No.	1	Serial No.
Elevation (Spirit Level)	959'	
Quadrangle	VADIS WC	
County	DODDRIDGE	District COVE
Engineer	CHET WATERMAN	
Engineer's Registration No.	3788	
File No.	70003-467	Drawing No.
Date	12/3/70	Scale 1" = 40P

STATE OF WEST VIRGINIA
DEPARTMENT OF MINES
OIL AND GAS DIVISION
CHARLESTON

WELL LOCATION MAP
FILE NO. Dodd-1607

+ Denotes location of well on United States Topographic Maps, scale 1 to 62,500, latitude and longitude lines being represented by border lines as shown.

- Denotes one inch spaces on border line of original tracing.

6-6 Ponto Rico (Stout) 134

RECEIVED

MAR 12 1971



STATE OF WEST VIRGINIA DEPARTMENT OF MINES OIL AND GAS WELLS DIVISION 3

- Rotary []
Spider []
Cable Tools [x]
Storage [] G. NO. 11

WELL RECORD

Oil or Gas Well Gas & Oil (KIND)

39-15 4-1
Vadis
Quadrangle Helbrook
Permit No. DOD- 1607

Company WARREN DRILLING COMPANY
Address 1215 UNITED FOUNDERS BUILDING
Farm Vera Haught Acres 134
Location (waters) Cove Creek
Well No. One Elev. 959'
District Cove County Doddridge
The surface of tract is owned in fee by Verna Haught
Mineral rights are owned by Verna Haught
Drilling commenced 12/20/70
Drilling completed 1/28/71
Date Shot none From To

Table with 4 columns: Casing and Tubing, Used in Drilling, Left in Well, Packers. Rows include sizes 16, 13, 10, 8 1/4, 6 5/8, 5 3/16, 4 1/2, 3, 2 and packer details.

Open Flow /10ths Water in show Inch
Volume Cu. Ft.
Rock Pressure unknown lbs. hrs.
Oil show bbls., 1st 24 hrs.
WELL ACIDIZED (DETAILS)
WELL FRACTURED (DETAILS)
RESULT AFTER TREATMENT
ROCK PRESSURE AFTER TREATMENT
Fresh Water 25 Feet Salt Water
Producing Sand Gordon & Injun Depth 2010-13, 2041-44, 2634-35

Attach copy of cementing record.
CASING CEMENTED 4 1/2" SIZE 2680' No. Ft. 1/29/71 Date
Amount of cement used (bags) 175 Type I, 12.5# Gilsonite/sk
Name of Service Co. Halliburton
COAL WAS ENCOUNTERED AT none FEET INCHES
FEET INCHES FEET INCHES
FEET INCHES FEET INCHES
Gordon: 850 Bbls. water, 24000# 10-20, 2000# 20-40 sand, 29B/m at 2450
Injun: 748 Bbls. water, 10000# 10-20 sand, 17.6 B/M at 3500 psi. 110 MCF EPD + 1 BOPD
110,000 - 1/2 BOPD
Injun Feet Gordon
Depth 2010-13, 2041-44, 2634-35

Table with 8 columns: Formation, Color, Hard or Soft, Top, Bottom, Oil, Gas or Water, Depth, Remarks. Lists geological layers from top soil to slate at 630 feet depth.

(over)

MAR 22 1971

Formation	Color	Hard or Soft	Top ₃	Bottom	Oil, Gas or Water	Depth Found	Remarks
red rock			685	765			
slate&shells			765	795			
red rock			795	830			
lime			830	850			
sand			850	885			
sand&shells			885	925			
lime			925	950			
red rock			950	985			
lime			985	1025			
red rock&skate			1025	1105			
lime& slate			1105	1175			
sand			1175	1265			
slate&shells			1265	1325			
sand			1325	1345			
slate&shells			1345	1435			
sand			1435	1455			
slate&shells			1455	1550			
lime			1550	1570			
sand			1570	1605			
slate			1605	1690			
sand			1690	1720			
slate			1720	1875			
sand			1875	1900			
slate			1900	1905			
lime			1905	1925			Little lime
sand			1925	1935			
slate			1935	1945			
lime			1945	1995			Big Lime
sand			1995	2095	gas	1995-10	Big Injun
sand			2095	2200			
sand			2200	2350			
slate			2350	2405			
sand			2405	2418			
slate			2418	2450			
lime	gritty		2450	2510			
slate&shells			2510	2635			
sand		broken	2635	2639	oil	2635	Gordon
slate			2639	2656	(correction)		
TD			2680				

Date 3/11/71, 19

APPROVED Warren Drilling Co., Owner

By J. M. [Signature]
(Title)