

3.88 S
2.97 W

Minimum Error of Closure 1 in 200

Source of Elevation U.S.G.S. B.M. at R.R. bridge over Long Run

1500' SW = 879

I, the undersigned, hereby certify that this map is correct to the best of my knowledge and belief and shows all the information required by paragraph 6 of the rules and regulations of the oil and gas section of the mining laws of West Virginia.

Signed: W. Shaughnessy

Squares: N E W

Map No.

- Fracture
- New Location
- Drill Deeper
- Abandonment

Partial Plugging wires 12/15/72

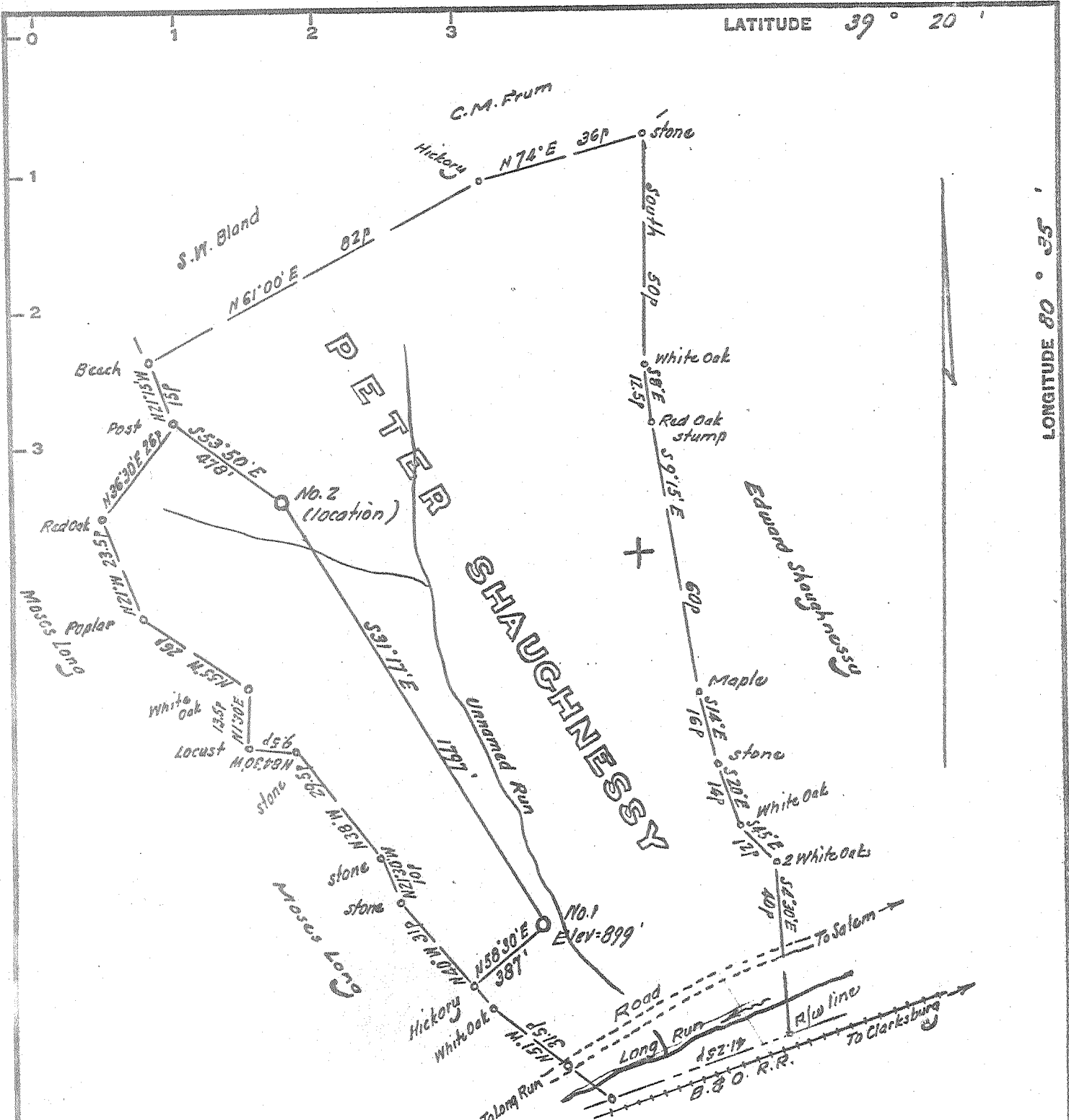
Company Mid-American Exploration
 Address 914-915 Goff Bldg. Clarksburg, West Va.
 Farm Peter Shaughnessy
 Tract _____ Acres 95 Lease No. _____
 Well (Farm) No. 000 Serial No. _____
 Elevation (Spirit Level) 899
 Quadrangle Centerpoint SC
 County Doddridge District Grant
 Engineer W. Shaughnessy
 Engineer's Registration No. 1227
 File No. _____ Drawing No. _____
 Date Dec. 31, 1968 Scale 1" = 300' = 495'

STATE OF WEST VIRGINIA
 DEPARTMENT OF MINES
 OIL AND GAS DIVISION
 CHARLESTON

WELL LOCATION MAP
 FILE NO. DOB-1553-PP

+ Denotes location of well on United States Topographic Maps, scale 1 to 62,500, latitude and longitude lines being represented by border lines as shown.

- Denotes one inch spaces on border line of original tracing.



LATITUDE 39° 20'

LONGITUDE 80° 35'

Minimum Error of Closure 1 in 200
 Source of Elevation U.S.G.S.B.M. at R.R. bridge over Long Run
1500' SW = 879

I, the undersigned, hereby certify that this map is correct to the best of my knowledge and belief and shows all the information required by paragraph 6 of the rules and regulations of the oil and gas section of the mining laws of West Virginia.

- Fracture.....
- New Location.....
- Drill Deeper.....
- Abandonment.....

Signed: Musbaert J
 Squares: N E W

Map No. _____

Company Mid-American Exploration
 Address 914-915 Goff Bldg. Clarksburg West Va.
 Farm Peter Shaughnessy
 Tract _____ Acres 95 Lease No. _____
 Well (Farm) No. 000 Serial No. _____
 Elevation (Spirit Level) 899
 Quadrangle Centerpoint SC
 County Doddridge District Grant
 Engineer Musbaert J
 Engineer's Registration No. 1227
 File No. _____ Drawing No. _____
 Date Dec. 31, 1968 Scale 1" = 30p = 495'

STATE OF WEST VIRGINIA
 DEPARTMENT OF MINES
 OIL AND GAS DIVISION
 CHARLESTON

WELL LOCATION MAP
 FILE NO. DOD - 155-3

+ Denotes location of well on United States Topographic Maps, scale 1 to 62,500, latitude and longitude lines being represented by border lines as shown.

- Denotes one inch spaces on border line of original tracing.