

ACCURACY: 1/2000

Source of Elevation MT. UNION CHURCH (1923)

I, the undersigned, hereby certify that this map is correct to the best of my knowledge and belief and shows all the information required by paragraph 6 of the rules and regulations of the oil and gas section of the mining laws of West Virginia.

- New Location
- Drill Deeper
- Abandonment *issued 4-11-69*
- Fracture
- Redrill

Chet Waterman

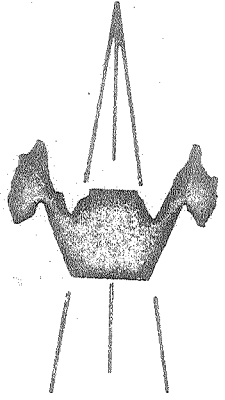
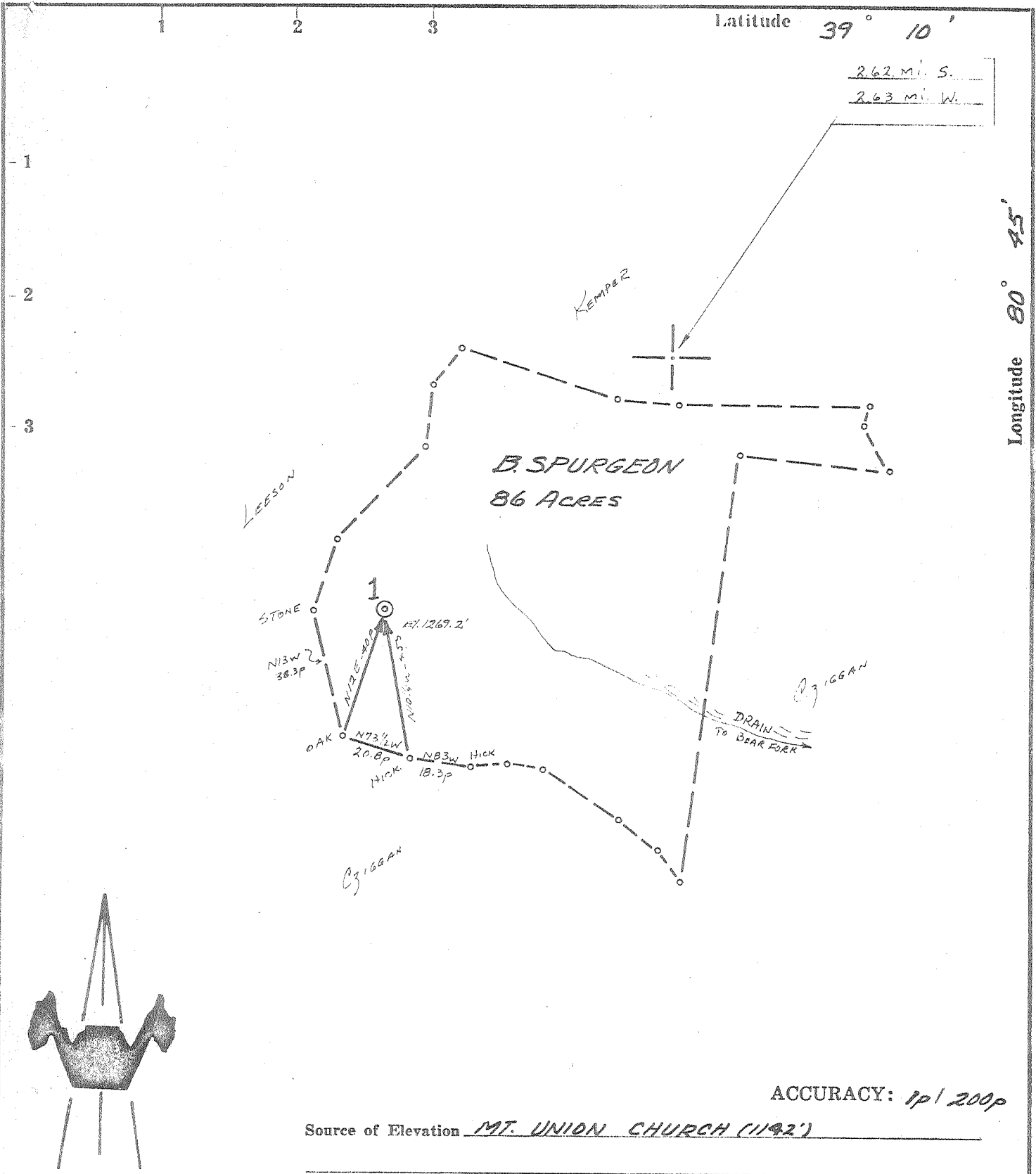
Company W. E. M. OIL & GAS CO. BY
ROBERT WEEKS & W. E. MYERS, AGENTS
 Address HUNTINGTON, W. VA.
 Farm B. SPURGEON
 Tract _____ Acres 86 Lease No. _____
 Well (Farm) No. 1 Serial No. _____
 Elevation (Spirit Level) 1269.2'
 Quadrangle HOLBROOK EC
 County DODDRIDGE District COVE
 Engineer CHET WATERMAN
 Engineer's Registration No. 3788
 File No. 65003-205 Drawing No. _____
 Date 11/23/68 Scale 1" = 400'

STATE OF WEST VIRGINIA
 DEPARTMENT OF MINES
 OIL AND GAS DIVISION
 CHARLESTON

WELL LOCATION MAP
 FILE NO. 200-1546-P

+ Denotes location of well on United States Topographic Maps, scale 1 to 62,500, latitude and longitude lines being represented by border lines as shown.

— Denotes one inch spaces on border line of original tracing.



ACCURACY: 1p/200p

Source of Elevation MT. UNION CHURCH (1192')

I, the undersigned, hereby certify that this map is correct to the best of my knowledge and belief and shows all the information required by paragraph 6 of the rules and regulations of the oil and gas section of the mining laws of West Virginia.

Chet Waterman

Company W & M. OIL & GAS CO. by
ROBERT WEEKS & W.E. MYERS, AGENTS
 Address HUNTINGTON, W.VA.
 Farm B. SPURGEON
 Tract _____ Acres 86 Lease No. _____
 Well (Farm) No. 1 Serial No. _____
 Elevation (Spirit Level) 1269.2'
 Quadrangle HOLBROOK EC
 County DODDRIDGE District COVE
 Engineer CHET WATERMAN
 Engineer's Registration No. 3788
 File No. 68003-205 Drawing No. _____
 Date 11/22/68 Scale 1" = 40p

STATE OF WEST VIRGINIA
 DEPARTMENT OF MINES
 OIL AND GAS DIVISION
 CHARLESTON

WELL LOCATION MAP
 FILE NO. 200-1546

+ Denotes location of well on United States Topographic Maps, scale 1 to 62,500, latitude and longitude lines being represented by border lines as shown.
 — Denotes one inch spaces on border line of original tracing.



STATE OF WEST VIRGINIA
DEPARTMENT OF MINES
OIL AND GAS DIVISION 3

Rotary
Spudder
Cable Tools
Storage

Oil or Gas Well Dry (KIND)

Quadrangle Holbrook

Permit No. Dodd 1546

WELL RECORD

Company W & M Oil & Gas Co.
Address Huntington, W. Va.
Farm Berlin Spurgeon Acres 86
Location (waters) Straight Fork
Well No. -1- Elev. 1269.2'
District Cove County Doddridge
The surface of tract is owned in fee by Spurgeon Heirs
Address Auburn, W. Va.
Mineral rights are owned by Spurgeon Heirs
Address Auburn, W. Va.
Drilling commenced 3-3-69
Drilling completed 3-31-69
Date Shot From To
With

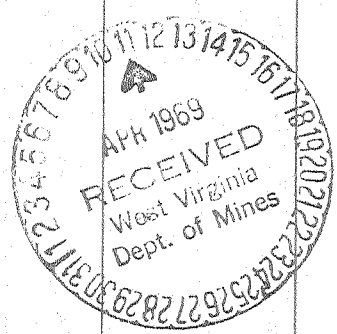
Casing and Tubing	Used in Drilling	Left in Well	Packers
Size			Kind of Packer
16			
13	19'	19'	
10	29 1/2'	-0-	Size of
8 1/4	1192'	-0-	
6 3/8			Depth set
5 3/16			
4 1/2			
3			Perf. top
2			Perf. bottom
Liners Used			Perf. top
			Perf. bottom

Open Flow /10ths Water in None Inch
/10ths Merc. in. Inch
Volume Cu. Ft.
Rock Pressure lbs. hrs.
Oil bbls., 1st 24 hrs.
WELL ACIDIZED (DETAILS)
WELL FRACTURED (DETAILS)

Attach copy of cementing record.
CASING CEMENTED SIZE No. Ft. Date
Amount of cement used (bags)
Name of Service Co.
COAL WAS ENCOUNTERED AT None FEET INCHES
FEET INCHES FEET INCHES
FEET INCHES FEET INCHES

RESULT AFTER TREATMENT (Initial open Flow or bbls.)
ROCK PRESSURE AFTER TREATMENT HOURS
Fresh Water Feet Salt Water Feet
Producing Sand Depth

Formation	Color	Hard or Soft	Top	Bottom	Oil, Gas or Water	Depth	Remarks
Top Soil			-0-	15			
Sand			15	65	Water		
Red Rock			65	90			
Lime			90	110			
Red Rock			110	120			
Slate			120	145			
Gritty Lime			145	190			
Red Rock			190	215			
Slate			215	225			
Red Rock			225	275			
Slate			275	300			
Red Rock			300	355			
Slate			355	395			
Red Rock			395	420			
Sand			420	435			
Slate			435	445			
Red Rock			445	505			
Slate			505	535			
Sand			535	565			
Red Rock			565	625			
Lime			625	640			
Slate			640	660			
Lime			660	680			
Slate			680	730			
Gritty Lime			730	755			
Slate & Shells			755	775			
Red Rock			775	800			
Slate & Shells			800	810			
Lime			810	830			



Formation	Color	Hard or Soft	Top 3	Bottom	Oil, Gas or Water	Depth Found	Remarks
Red Rock & Lime			830	890			
Sandy Lime			890	925			
Red Rock			925	955			
Slate & Shells			955	1000			
Lime			1000	1018			
Red Rock			1018	1040			
Lime			1040	1060			
Slate & Shells			1060	1140			
Sand			1140	1160			
Black Slate			1160	1181			
Lime			1181	1193			
Slate & Shells			1193	1280			
Sand			1280	1325			
Slate			1325	1335			
Lime			1335	1355			
Slate & Shells			1355	1390			
Sand			1390	1405			
Lime			1405	1435			
Slate			1435	1440			
Lime			1440	1450			
Sand			1450	1485			
Slate & Shells			1485	1492			
Sand			1492	1530			
Black Slate & Shells			1530	1560			
Sand			1560	1590			
Black Slate			1590	1610			
Broken Sand			1610	1725			
Slate & Shells			1725	1860			
Sand - Broken			1860	1890			
Slate & Shells			1890	1925			
Lime			1925	1960			
Red Lime			1960	1980			
Slate & Shells			1980	2005			
Little Lime			2005	2028			
Sand			2028	2040			
Slate			2040	2047			
Big Lime			2047	2100			
Sand			2100	2122			
Lime	Big Injun		2122	2145			
Sand	Square		2145	2188			
Slate			2188	2208			

T. D. 2208

Date April 11, 19 69

APPROVED W & M Oil & Gas Co., Owner

By William E. Myers, Agent
(Title)