

Elev. taken from Well No. 1 - Trio

I, the undersigned, hereby certify that this map is correct to the best of my knowledge and belief and shows all of the information required by paragraph 6 of the rules and regulations of the oil and gas section of the mining laws of West Virginia.

W. B. Street Jr.
R. P. E. No. 1227

New Location
 Drill Deeper
 Abandonment 12/10/75

Error in closure = less than 1/200'

Company P. DOUGLASS FARR
 Address West Union, W. Va.
 Farm W. J. Douglas
 Tract _____ Acres 71.5 Lease No. _____
 Well (Farm) No. One Serial No. _____
 Elevation (Spirit Level) 1079'
 Quadrangle Madis NW
 County Doddridge District New Milton
 Engineer W. B. Street Jr.
 Engineer's Registration No. 1227
 File No. _____ Drawing No. _____
 Date June 16, 1963 Scale 1" = 300' = 495'

STATE OF WEST VIRGINIA
 DEPARTMENT OF MINES
 OIL AND GAS DIVISION
 CHARLESTON

WELL LOCATION MAP
 FILE NO. Dod-1527-P
 Trans. from Dod-1002

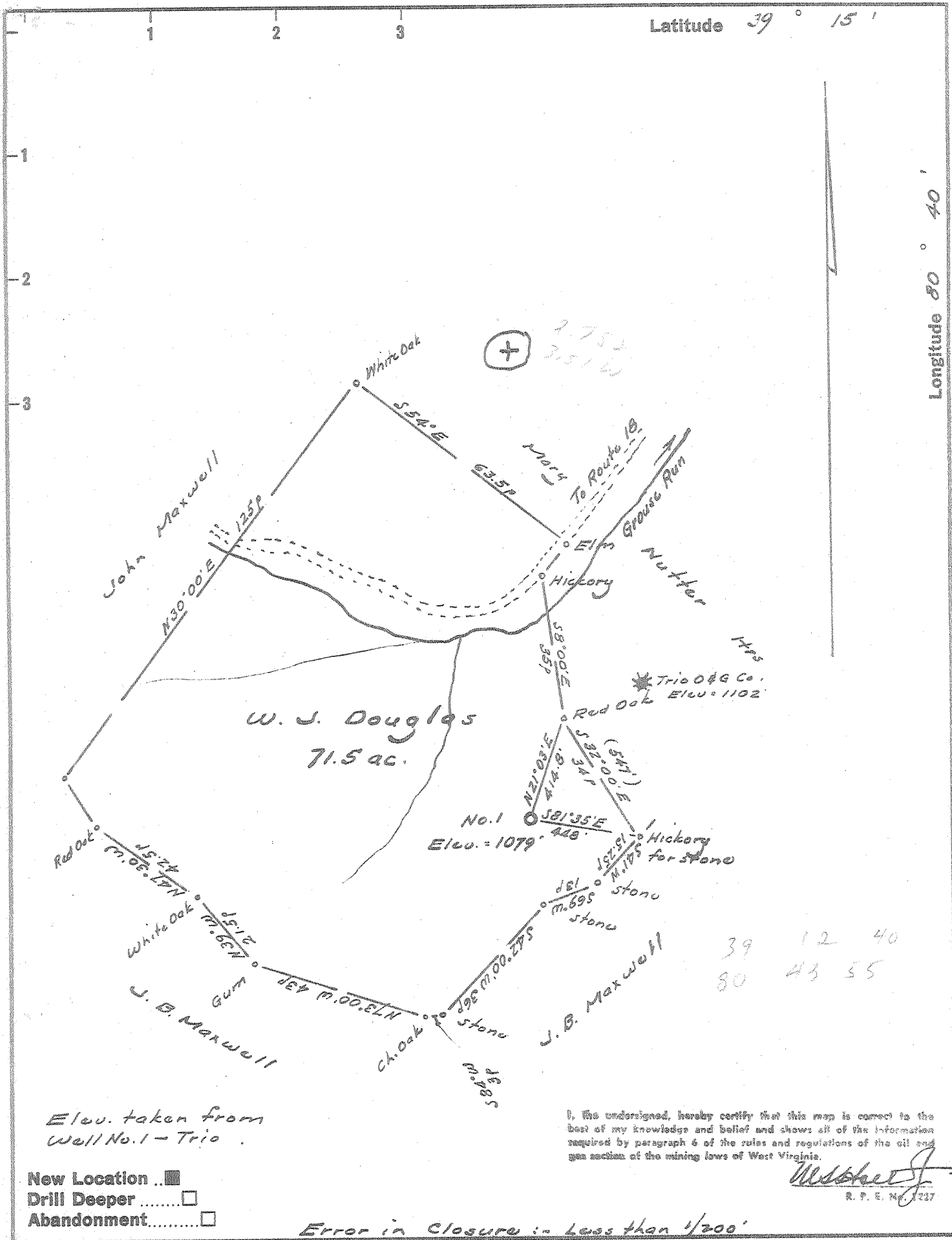
+ Denotes location of well on United States Topographic Maps, scale 1 to 62,500, latitude and longitude lines being represented by border lines as shown.

- Denotes one inch spaces on border line of original tracing.

47-017

Latitude 39° 15'

Longitude 80° 40'



- New Location...
- Drill Deeper.....
- Abandonment.....

I, the undersigned, hereby certify that this map is correct to the best of my knowledge and belief and shows all of the information required by paragraph 6 of the rules and regulations of the oil and gas section of the mining laws of West Virginia.

W. J. Douglas
R. P. E. No. 1227

Error in closure = less than 1/200'

Company P. DOUGLASS FARR
 Address West Union, W. Va.
 Farm W. J. Douglas
 Tract _____ Acres 71.5 Lease No. _____
 Well (Farm) No. One Serial No. _____
 Elevation (Spirit Level) 1079'
 Quadrangle Vadis NW
 County Doddridge District New Milton
 Engineer W. J. Douglas
 Engineer's Registration No. 1227
 File No. _____ Drawing No. _____
 Date June 16, 1963 Scale 1" = 300' = 495'

STATE OF WEST VIRGINIA
 DEPARTMENT OF MINES
 OIL AND GAS DIVISION
 CHARLESTON

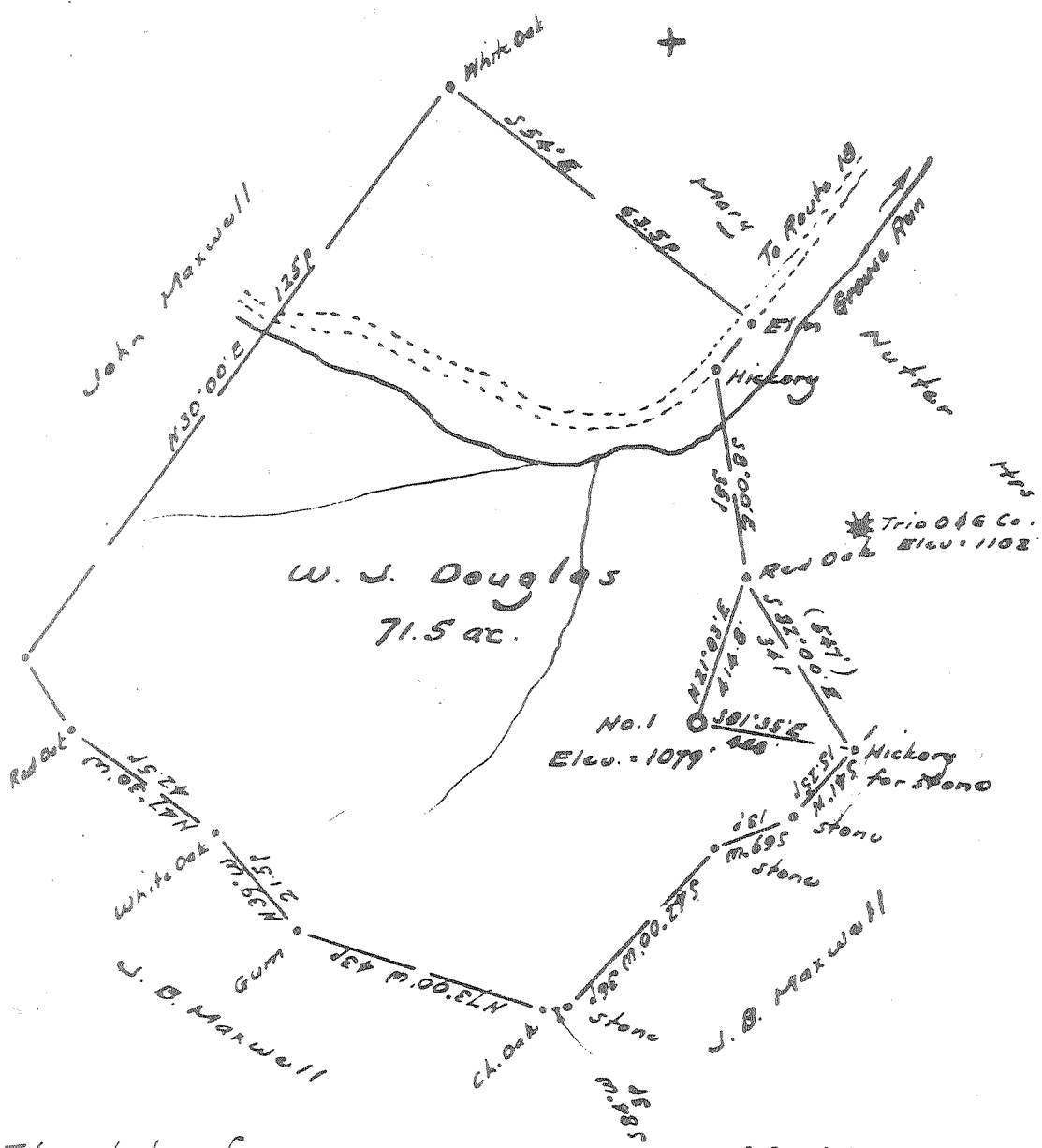
WELL LOCATION MAP
 FILE NO. Dod-1527
 Trans. from Dod-1002

+ Denotes location of well on United States Topographic Maps, scale 1 to 62,500, latitude and longitude lines being represented by border lines as shown.

— Denotes one inch spaces on border line of original tracing.

Latitude 39° 15'

Longitude 80° 40'



Elev. taken from Well No. 1 - Trio

I, the undersigned, hereby certify that this map is correct to the best of my knowledge and belief and shows all of the information required by paragraph 6 of the rules and regulations of the oil and gas section of the mining laws of West Virginia.

W. S. Hester
E. P. E. No. 1227

- New Location
- Drill Deeper
- Abandonment

Error in Closure = less than 1/200'

Company P. DOUGLASS FARR
 Address West Union, W. Va.
 Farm W. J. Douglas
 Tract _____ Acres 71.5 Lease No. _____
 Well (Farm) No. One Serial No. _____
 Elevation (Spirit Level) 1079'
 Quadrangle Vadis NW
 County Doddridge District New Milton
 Engineer W. S. Hester
 Engineer's Registration No. 1227
 File No. _____ Drawing No. _____
 Date June 16, 1963 Scale 1" = 300' = 495'

STATE OF WEST VIRGINIA
DEPARTMENT OF MINES
OIL AND GAS DIVISION
CHARLESTON

WELL LOCATION MAP
FILE NO. Dod-1002

- + Denotes location of well on United States Topographic Maps, scale 1 to 62,500, latitude and longitude lines being represented by border lines as shown.
- Denotes one inch spaces on border line of original tracing.



STATE OF WEST VIRGINIA
DEPARTMENT OF MINES
OIL AND GAS WELLS DIVISION

Rotary
Spudder
Cable Tools
Storage

W/ gas Show

Quadrangle Vadis
Permit No. DOD-1527

WELL RECORD

Oil or Gas Well Dry hole
(KIND)

Company P. Douglass Farr
Address Drawer 307, West Union, W. Va.
Farm W.J. Douglas Heirs Acres 71.5
Location (waters) Grouse Run
Well No. 1 Elev. 1079
District New Milton County Doddridge
The surface of tract is owned in fee by A. B. Schwartzman
Address Washington, D.C.
Mineral rights are owned by W. J. Douglas Heirs
2966 Penna. Ave., ALEXANDRIA, CHARLESTON, WVA.
Drilling commenced October 4, 1968
Drilling completed July 1, 1970
Date Shot No From To
With
Open Flow /10ths Water in Inch
 /10ths Merc. in Inch
Volume zero Cu. Ft.
Rock Pressure 19 lbs. 24 hrs.
Oil zero bbls., 1st 24 hrs.
WELL ACIDIZED (DETAILS) 5-5-72= 750 gal. of
15% HCL
WELL FRACTURED (DETAILS) No

Casing and Tubing	Used in Drilling	Left in Well	Packers
Size			Kind of Packer
16	18		
13			Size of
10	38		
8 1/4	549	549	Depth set
6 3/8	1280		
5 3/16	2084		Perf. top 1998
4 1/2			Perf. bottom 2010
3			Perf. top
2			Perf. bottom
Liners Used			

Blow Men dog

Attach copy of cementing record. 549 8-21-70
CASING CEMENTED 8 1/4 SIZE 200 No. Ft. 12-10-70 Date
4 1/2
Amount of cement used (bags) 150 & 35
Name of Service Co. Halliburton Services
COAL WAS ENCOUNTERED AT None FEET INCHES
FEET INCHES FEET INCHES
FEET INCHES FEET INCHES

RESULT AFTER TREATMENT (Initial open Flow or bbls.) zero
ROCK PRESSURE AFTER TREATMENT 19 lb. HOURS 24
Fresh Water 175 & 535 Feet Salt Water 1500-1504 Feet
Producing Sand None Depth

Formation	Color	Hard or Soft	Top	Bottom	Oil, Gas or Water	Depth	Remarks
Mud	Red		0	75			
Lime	Gray	Soft	75	100			
Slate Shells	Gray	Soft	100	154			
Lime	Gray	Soft	154	172			
Slate Shells	Gray	Soft	172	181	Fresh water	175	
Rock	Red	Soft	181	195			
Lime	Red	Hard	195	220			
Rock	Red	Soft	220	245			
Lime	Gray	Hard	245	275			
Sand	Gray	Hard	275	312			
Rock	Red	Soft	312	338			
Lime	Gray	Hard	338	349			
Sand	Gray	Hard	349	403			
Slate	Gray	Soft	403	421			
Rock	Red	Soft	421	490			
Slate Shells	Black	Hard	490	507			
Sand	Gray	Hard	507	541	Fresh water	535	
Lime	Gray	Hard	541	571			
Slate Shells	Black	Hard	571	594			
Lime	Gray	Hard	594	633			
Slate Shells	Gray	Hard	633	663			
Lime	Gray	Soft	663	703			
Slate Shells	Gray	Soft	703	797			
Rock	Red	Soft	797	808			
Lime	Gray	Hard	808	828			
Shale	Red	Soft	828	837			
Rock	Red	Soft	837	863			

Formation	Color	Hard or Soft	Top	Bottom	Oil, Gas or Water	Depth Found	Remarks
lime	Gray	Hard	863	874			
late Shells	Black	Soft	874	915			
lime	Pink	Soft	915	920			
lock Shale	Pink	Soft	920	930			
lock	Red	Soft	930	940			
lime	Gray	Hard	940	970			
late Shells	Gray	Hard	970	981			
lime	Black	Hard	981	1048			
lime Shale	Gray	Soft	1048	1078			
late	Black	Soft	1078	1100			
hale	Gray	Soft	1100	1138			
lime	Red	Hard	1138	1148			
late	Black	Hard	1148	1205			
lime	Gray	Hard	1205	1234			
late	Black	Hard	1234	1274			
lime	Gray	Gritty	1294	1280			
and	Gray	Hard	1280	1354			
late	Black	Soft	1354	1398			
lime	Gray	Hard	1398	1405			
late Shells	Black	Hard	1405	1468			
lime	Gray	Hard	1468	1479			
and	Gray	Hard	1479	1548	Salt Water	1500-1504	
late Shells	Gray	Hard	1548	1572			
lime	Gray	Gritty	1572	1582			
late Shells	Black	Hard	1582	1674			
lime	Gray	Gritty	1674	1688			
late	Black	Soft	1688	1708			
and	Gray	Hard	1708	1795			
late	Black	Hard	1795	1802			
lime	Gray	Hard	1802	1840			
late Shells	Black	Hard	1840	1899			
lime	Red	Hard	1899	1908			
late Shells	Black	Hard	1908	1925			
lime	Gray	Hard	1925	1963			
late	Black	Soft	1963	1978			
ittle Lime	Gray	Hard	1978	1987			
late	Black	Soft	1987	1995			
blue Monday	Gray	Hard	1995	2024	Show of gas	1998 - 2003	
ig Injun	Gray	Hard	2024	2075	Show of oil & gas	2005-2009	
njun Sand	Brown	Hard	2075	2171	Show of gas	2100 - 2107	
total Depth				2172		2172	

Date December 4, 1975

APPROVED *P. Douglas East*, Owner

By _____ (Title)