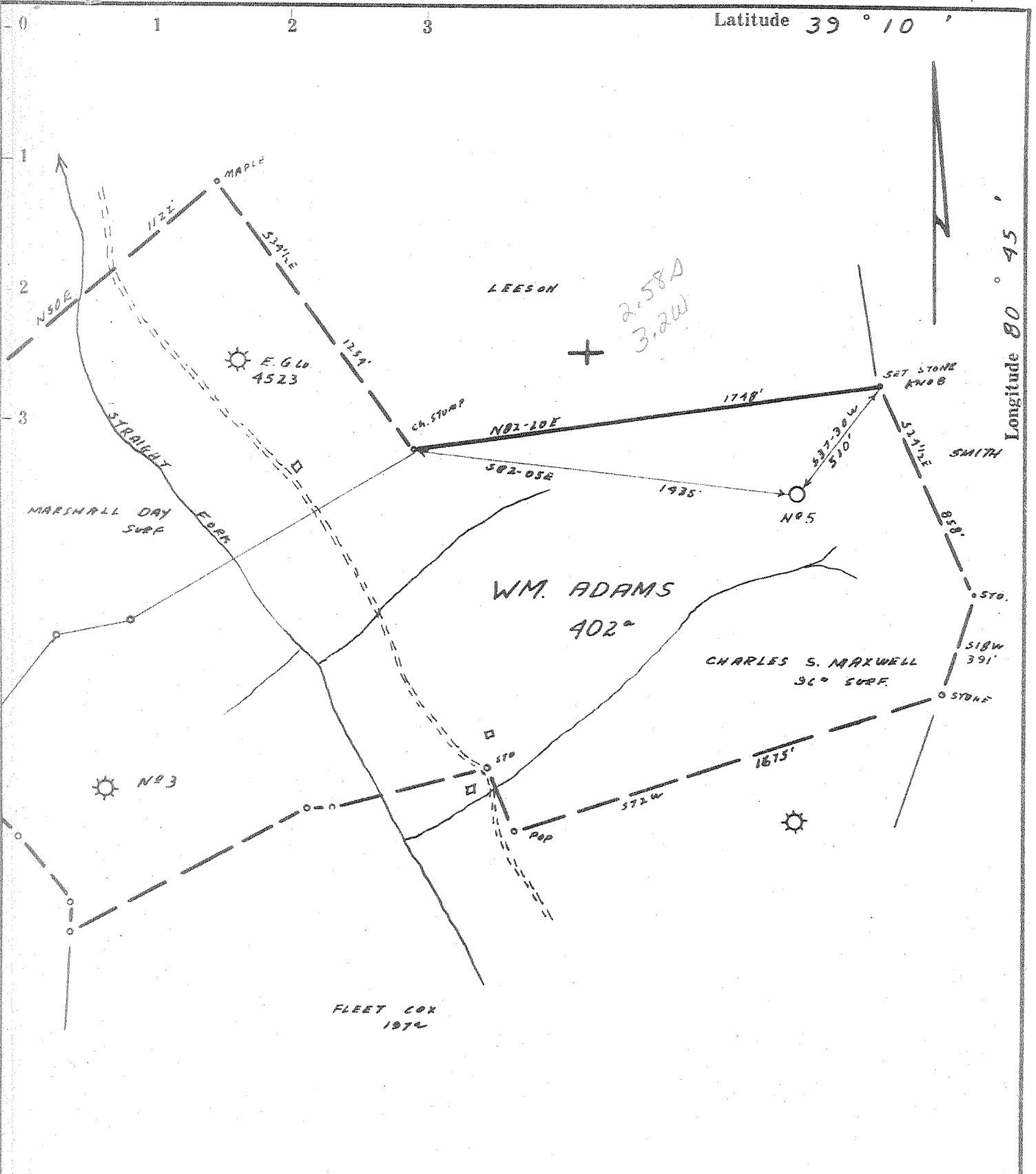


Latitude 39° 10'



Longitude 80° 45'

- Fracture.....
- Redrill.....
- New Location.
- Drill Deeper.....
- Abandonment.....

Source of Elevation WELL NO 4523, ELV. 983'

I, the undersigned, hereby certify that this map is correct to the best of my knowledge and belief and shows all the information required by paragraph 6 of the rules and regulations of the oil and gas section of the mining laws of West Virginia.

Minimum accuracy, one part in 200

Company WILLARD E. FERRELL

Address PHILADELPHIA, PA. Box 5056

Farm WM. ADAMS

Tract 352° Acres 402 Lease No. _____

Well (Farm) No. 8 Serial No. 5

Elevation (Spirit Level) 1170

Quadrangle HOLBROOK NE31 EC

County DODDRIDGE District SOUTHWEST

Engineer James D. Jeffers

Engineer's Registration No. 1084

File No. 214/64 Drawing No. _____

Date 4-16-68 Scale 1" = 500'

STATE OF WEST VIRGINIA
DEPARTMENT OF MINES
OIL AND GAS DIVISION
CHARLESTON

WELL LOCATION MAP
FILE NO. 000-1512

+ Denotes location of well on United States Topographic Maps, scale 1 to 62,500, latitude and longitude lines being represented by border lines as shown.

— Denotes one inch spaces on border line of original tracing.



STATE OF WEST VIRGINIA
DEPARTMENT OF MINES
OIL AND GAS DIVISION

Rotary
Spudder
Cable Tools
Storage

Quadrangle

Permit No. DOD-1512

WELL RECORD

Oil or Gas Well Gas (KIND)

Company Willard E. Ferrell -Starlight Dev. Co. #
Address P.O.Box 5056, Philadelphia, Pa. 19111
Farm Wm. Adams Acres 402
Location (waters) Straight Fork
Well No. Series 5--(Farm 8) Elev. 1170
District Southwest County Doddridge
The surface of tract is owned in fee by Adams Heirs
Address Auburn, W. Va.
Mineral rights are owned by Adams Heirs
Union Nat. Bank-Clarksburg- Trustee
Address
Drilling commenced June 15, 1968
Drilling completed July 7, 1968
Date Shot From To
With
Open Flow 9/10ths Water in 1 Inch
/10ths Merc. in Inch
Volume 35 Cu. Ft.
Rock Pressure Not taken lbs. hrs.
Oil bbls., 1st 24 hrs.

Casing and Tubing	Used in Drilling	Left in Well	Packers
Size			
16 14 Pipe	24ft.	24ft.	Kind of Packer
13			Size of
10	214		Depth set
8 1/4	750		
6 5/8	1211		
5 3/16	2050	2050	
4 1/2			
3			Perf. top 2011
2			Perf. bottom 2025
Liners Used			Perf. top
			Perf. bottom

WELL ACIDIZED (DETAILS)

Attach copy of cementing record.
CASING CEMENTED 5-3/16 SIZE 200 No. Ft. 7/8/68 Date
Amount of cement used (bags) 35
Name of Service Co. Lawson
COAL WAS ENCOUNTERED AT FEET INCHES
FEET INCHES FEET INCHES
FEET INCHES FEET INCHES

WELL FRACTURED (DETAILS)

July 22, 1968 -- 800 bbls fluid- 500 gal acid (River-Frac.)

RESULT AFTER TREATMENT (Initial open Flow or bbls.)

850 cuft. F 50,000 850 MCF

ROCK PRESSURE AFTER TREATMENT

750 HOURS 12

Fresh Water Feet

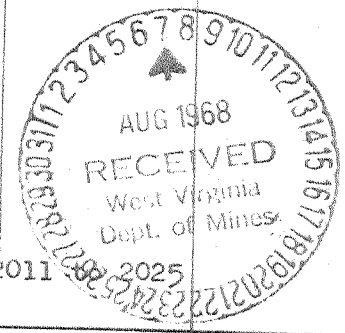
Salt Water Feet

Producing Sand Big Injun

Depth 2011-2025

Formation	Color	Hard or Soft	Top	Bottom	Oil, Gas or Water	Depth	Remarks
Clay			0	20			
Sand			20	80			
Red Rock			80	136			
Sand			136	150			
Red Rock			150	233			
Slate & Shells			233	615			
Red Rock			615	765			
Lime			765	790			
Red Rock			790	855			
Slate & Shells			855	950			
Lime			950	960			
Sand			960	1330			
Slate			1330	1345			
Lime (Gritty)			1345	1400			
Slate & Shells			1400	1410			
Sand			1410	1440			
Slate			1440	1460			
Slate & Shells			1450	1680			
Lime (Gritty)			1680	1715			
Sand			1715	1792			
Sand (Max)			1792	1800			
Lime			1800	1810			
Slate			1810	1843			
Lime (Little)			1843	1870			
Slate			1870	1885			
Lime (Big)			1885	1950			
Sand			1950	1961			
Lime			1961	1980			
Injun Sand			1980	2025			
Gritty Lime			2025	2050			
Total Depth				2050			

Big Injun



Gas --- 2011-2025

Total Depth AUG 19 1968