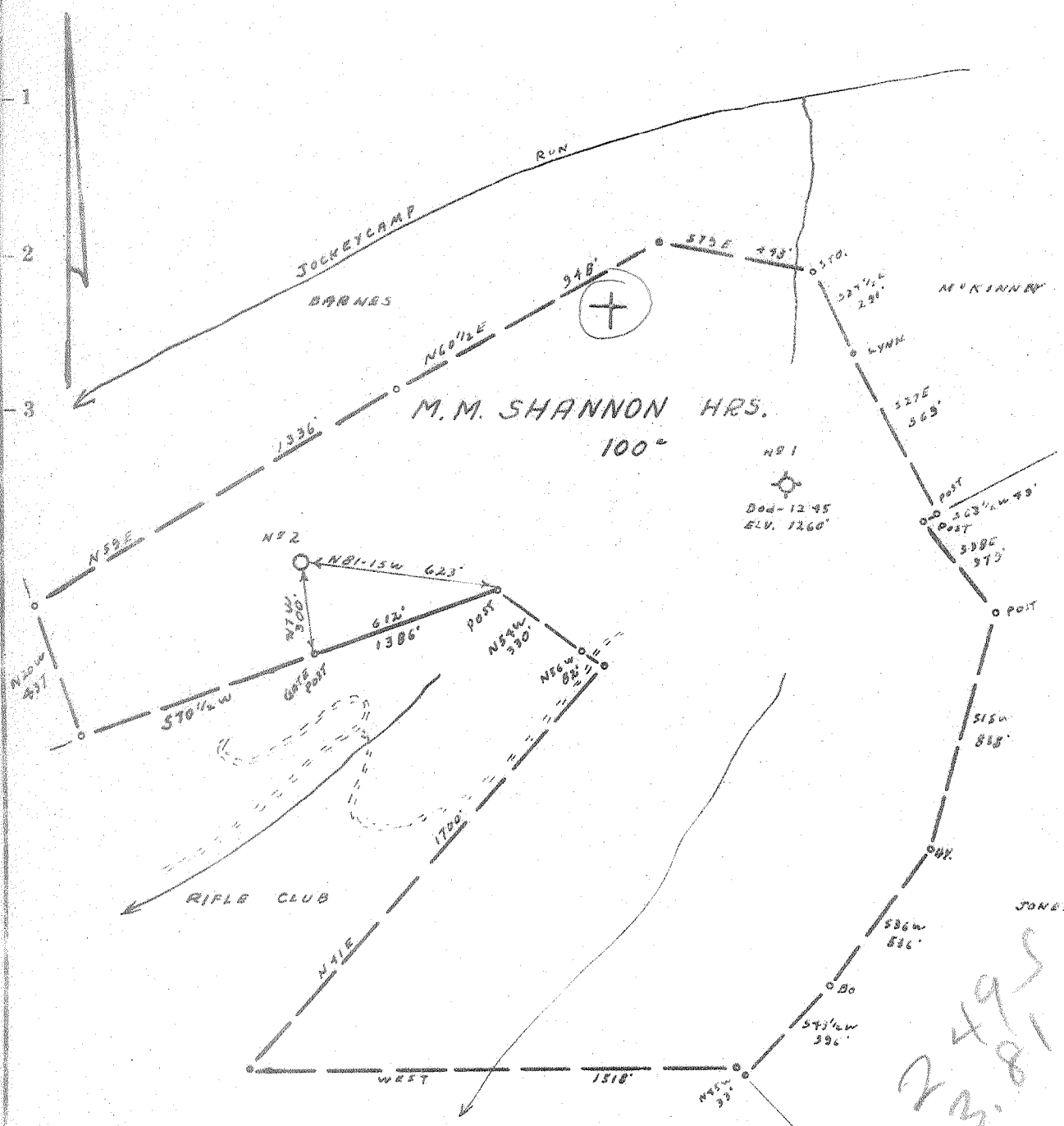


Latitude 39° 20'

Longitude 80° 40'



- Fracture.....
- Re-drill.....
- New Location.
- Drill Deeper.....
- Abandonment.....

Source of Elevation DOD. WELL DOD-1245 ELV. 1260'  
 I, the undersigned, hereby certify that this map is correct to the best of my knowledge and belief and shows all the information required by paragraph 6 of the rules and regulations of the oil and gas section of the mining laws of West Virginia.

Minimum accuracy, one part in 200

Company HUGH SPENCER  
 Address WEST UNION, W. VA.  
 Farm M.M. SHANNON HRS.  
 Tract \_\_\_\_\_ Acres 100 Lease No. \_\_\_\_\_  
 Well (Farm) No. 2 Serial No. \_\_\_\_\_  
 Elevation (Spirit Level) 1152'  
 Quadrangle CENTERPOINT SW 3'  
 County DODDRIDGE District WEST UNION  
 Engineer James J. Jeffers  
 Engineer's Registration No. 1084  
 File No. 213/16 Drawing No. \_\_\_\_\_  
 Date 5-27-67 Scale 1" = 500'

STATE OF WEST VIRGINIA  
 DEPARTMENT OF MINES  
 OIL AND GAS DIVISION  
 CHARLESTON

**WELL LOCATION MAP**  
 FILE NO. DOD-1481

+ Denotes location of well on United States Topographic Maps, scale 1 to 62,500, latitude and longitude lines being represented by border lines as shown.  
 — Denotes one inch spaces on border line of original tracing.

6-6 99



STATE OF WEST VIRGINIA  
DEPARTMENT OF MINES  
OIL AND GAS DIVISION

Quadrangle \_\_\_\_\_

WELL RECORD

Permit No. DOD-1481

Oil or Gas Well Gas  
(KIND)

Company Hugh Spencer  
Address West Union, W. Va. 26456  
Farm Shannon Acres 100  
Location (waters) Middle Island  
Well No. 2 Elev. 1152  
District West Union Mag. County Doddridge  
The surface of tract is owned in fee by Howard McIntyre  
Address Parkersburg, W. Va.  
Mineral rights are owned by Jean & Thomas Maxwell Randolph Heirs  
Address West Union, W. Va.  
Drilling commenced May 22, 1968  
Drilling completed July 7, 1968  
Date Shot \_\_\_\_\_ From \_\_\_\_\_ To \_\_\_\_\_  
With \_\_\_\_\_  
Open Flow 6 /10ths Water in \_\_\_\_\_ 2 Inch  
\_\_\_\_\_ /10ths Merc. in \_\_\_\_\_ Inch  
Volume 100 M Cu. Ft.  
Rock Pressure Not taken lbs. \_\_\_\_\_ hrs.  
Oil \_\_\_\_\_ bbls., 1st 24 hrs.  
WELL ACIDIZED \_\_\_\_\_

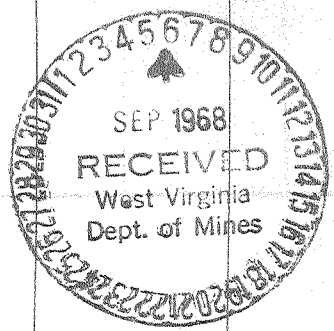
Casing and Tubing	Used in Drilling	Left in Well	Packers
Size			Kind of Packer
16	22	22	
13			
10	288		Size of
8 1/4	1088		
6 5/8			Depth set
5 1/2 - 16 4 1/2	2076	2076	
3			Perf. top
2			Perf. bottom
Liners Used			Perf. top
			Perf. bottom

CASING CEMENTED 4 1/2" SIZE 2076 No. Ft. 7-10-68 Date  
Garaton Cementing Company  
COAL WAS ENCOUNTERED AT None FEET \_\_\_\_\_ INCHES  
\_\_\_\_\_ FEET \_\_\_\_\_ INCHES FEET \_\_\_\_\_ INCHES  
\_\_\_\_\_ FEET \_\_\_\_\_ INCHES FEET \_\_\_\_\_ INCHES

WELL FRACTURED 1800 bbl. water, 500 gal. acid, and sand

RESULT AFTER TREATMENT 133 M. 133,000 133 McF  
ROCK PRESSURE AFTER TREATMENT 125 lbs.  
Fresh Water None Feet \_\_\_\_\_ Salt Water None Feet \_\_\_\_\_

Formation	Color	Hard or Soft	Top	Bottom	Oil, Gas or Water	Depth	Remarks
soil			0	10			
clay			10	60			
red Rock			60	154			
sand			154	175			
pink Rock			175	200			
lime			200	250			
red Rock			250	275			
broken Lime			275	295			
red Rock			295	330			
lime			330	345			
red Rock			345	370			
broken Lime			370	455			
red Rock			455	465			
broken Lime			465	515			
lime			515	523			
broken Lime			523	535			
plate & Shells			535	570			
lime			570	585			
red Rock			585	595			
plate & Shells			595	625			
red Rock			625	660			
broken Lime			660	680			
plate & Shells			680	695			
red Rock			695	720			
broken Lime			720	742			
red Rock			742	750			
lime			750	765			
red Rock			765	800			
plate & Shells			800	825			



(over)

SEP 16 1968

Formation	Color	Hard or Soft	Top	Bottom	Oil, Gas or Water	Depth Found	Remarks
Lime			825	850			
Red Lime			850	860			
Red Rock			860	900			
Slate & Shells			900	955			
Lime			955	1000			
Slate & Shells			1000	1019			
Lime			1019	1094			
Sand			1094	1143			
Lime			1143	1165			
Slate			1165	1169			
Sand			1169	1240			
Slate			1240	1260			
Sand			1260	1285			
Lime			1285	1350			
Sand			1350	1430			
Slate			1430	1445			
Sand			1445	1475			
MMH Lime			1475	1485			
Sand			1485	1500			
Slate & Shells			1500	1527			
Sand			1527	1553			
Slate & Shells			1553	1612			
Sand			1612	1657	Gas at 1615 - 1623		
Gritty Lime			1657	1665			
Slate & Shells			1665	1760			
Red Rock			1760	1810			
Slate			1810	1814			
Lime			1814	1839			
Pencil Cave			1839	1843			
Blue Monday			1843	1854	Oil & Gas at 1843 - 1848		
Big Lime			1854	1920			
Injun Sand			1920	2018	Oil & Gas at 1986 - 1994		
Squaw Sand			2018	2053	Gas at 2037 - 2047		
Slate			2053	2077			

*Squaw*

Date September 3, 1963

APPROVED *Thyl Spencer* Owner

By \_\_\_\_\_ (Title)