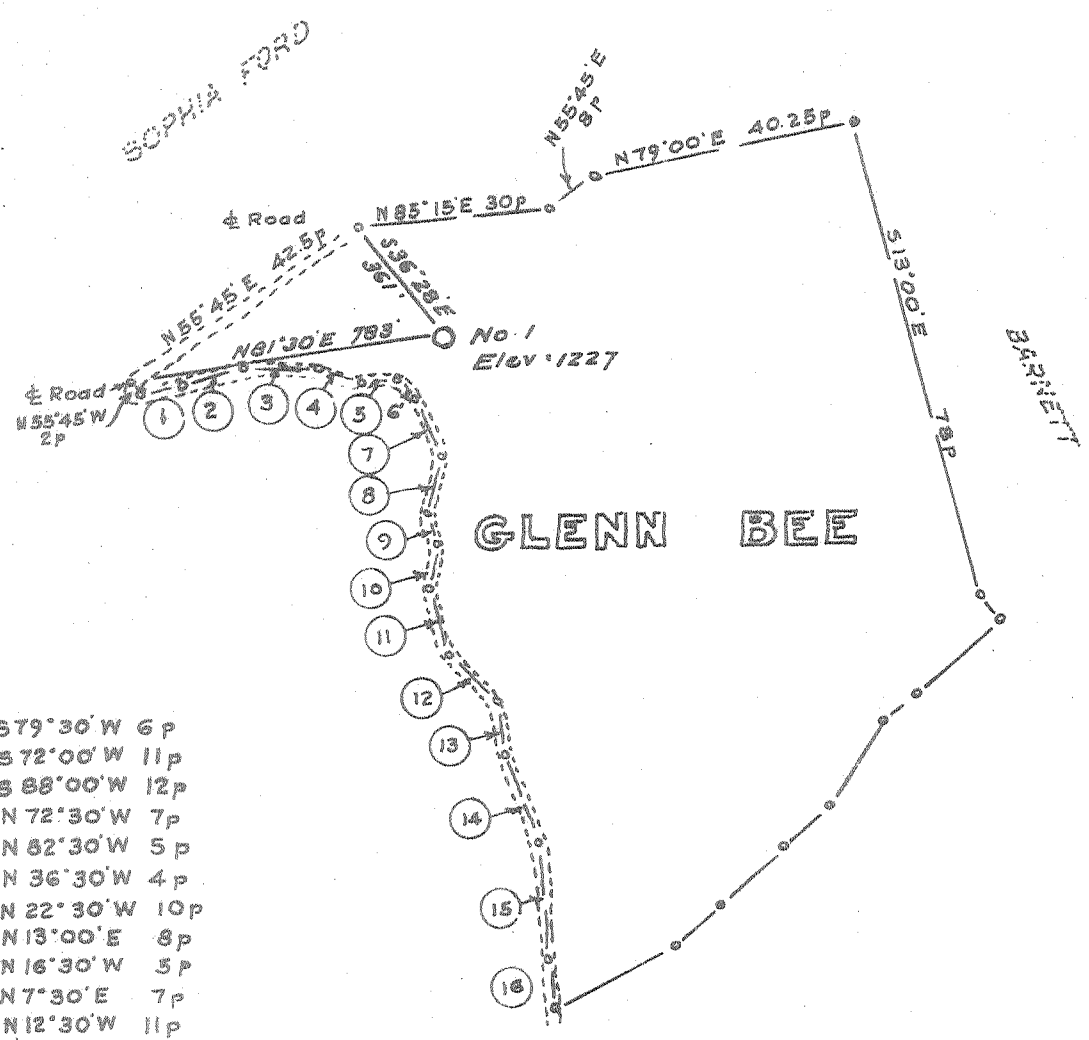


LATITUDE 39° 15'

LONGITUDE 80° 40'



- 1. S 79° 30' W 6 p
- 2. S 72° 00' W 11 p
- 3. S 88° 00' W 12 p
- 4. N 72° 30' W 7 p
- 5. N 82° 30' W 5 p
- 6. N 36° 30' W 4 p
- 7. N 22° 30' W 10 p
- 8. N 13° 00' E 8 p
- 9. N 16° 30' W 5 p
- 10. N 7° 30' E 7 p
- 11. N 12° 30' W 11 p
- 12. N 42° 30' W 10 p
- 13. N 8° 45' W 8 p
- 14. N 19° 30' W 14 p
- 15. N 3° 30' W 18 p
- 16. N 4° 30' W 8 p

7.5'  
2.845 391730  
0.23W 8040

Minimum Error of Closure 1 in 200

Source of Elevation B.M. mouth of Meathouse Fork = 820

Fracture   
 New Location   
 Drill Deeper   
 Abandonment

I, the undersigned, hereby certify that this map is correct to the best of my knowledge and belief and shows all the information required by paragraph 6 of the rules and regulations of the oil and gas section of the mining laws of West Virginia.

Signed: [Signature]  
 Squares: N S E W

Map No.

Company P. AND M. OIL CO.  
 Address 1/2 Luther Pigott, West Union, W. Va.  
 Farm Glenn Bee  
 Tract \_\_\_\_\_ Acres 49 Lease No. \_\_\_\_\_  
 Well (Farm) No. One Serial No. \_\_\_\_\_  
 Elevation (Spirit Level) 1227  
 Quadrangle Centerpoint / 5m shburg 73  
 County Doddridge District New Milton  
 Engineer [Signature]  
 Engineer's Registration No. 1227  
 File No. \_\_\_\_\_ Drawing No. \_\_\_\_\_  
 Date Sept 9, 1967 Scale 1" = 30p = 495

STATE OF WEST VIRGINIA  
 DEPARTMENT OF MINES  
 OIL AND GAS DIVISION  
 CHARLESTON

WELL LOCATION MAP

FILE NO. DOB - 1476

+ Denotes location of well on United States Topographic Maps, scale 1 to 62,500, latitude and longitude lines being represented by border lines as shown.

- Denotes one inch spaces on border line of original tracing.

6-6-99



STATE OF WEST VIRGINIA  
 DEPARTMENT OF MINES  
 OIL AND GAS DIVISION  
**WELL RECORD**

Rotary   
 Spudder   
 Cable Tools   
 Storage

Quadrangle Yadin

Permit No. DOD-1476

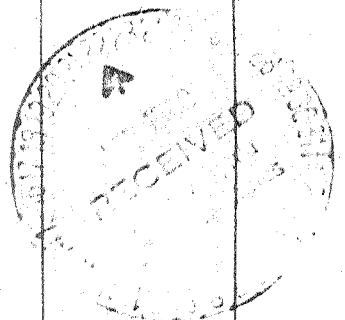
Oil or Gas Well Oil <sup>gas</sup> <sub>(KIND)</sub>

Company	Address	Farm	Location (waters)	Well No.	District	County	The surface of tract is owned in fee by	Mineral rights are owned by	Drilling commenced	Drilling completed	Date Shot	With	Open Flow	Volume	Rock Pressure	Oil	WELL ACIDIZED (DETAILS)	WELL FRACTURED (DETAILS)	RESULT AFTER TREATMENT (Initial open flow or bbls.)	ROCK PRESSURE AFTER TREATMENT	Fresh Water	Producing Sand
P & M. Oil Company	West Union, W. Va.	Glenn Bee	Wolf Penn Run	1	New Milton	Doddridge	Glenn Bee	Glenn Bee & Guy Parks	September 28, 1967	December 6, 1967			10/10ths Water in 3/8 /10ths Merc. in		86 lbs. 24 hrs.	1/2 bbls., 1st 24 hrs.		Dec. 27, 1967 Acid base, 3500 gal., 500 barrels water 20 000 pound sand Treating pressure 2500 break 1700 to 2100	1 barrel oil per day 4M gas	86 HOURS 24		Injun

Casing and Tubing	Used in Drilling	Left in Well	Packers
Size			Kind of Packer
16			
13			Size of
10	103	0	Depth set
8 1/4	857	857	
6 3/4	1353	0	
5 3/16			
4 1/2	2187	2187	Perf. top
3			Perf. bottom
2			Perf. top
Liners Used			Perf. bottom

Attach copy of cementing record.  
 CASING CEMENTED 4 1/2 SIZE 200 No. Ft. 12-12-67 Date  
 Amount of cement used (bags)  
 Name of Service Co.  
 COAL WAS ENCOUNTERED AT 818 FEET INCHES  
 FEET INCHES FEET INCHES  
 FEET INCHES FEET INCHES  
 Fresh Water Salt Water  
 Depth 2334

Formation	Color	Hard or Soft	Top	Bottom	Oil, Gas or Water	Depth	Remarks
Red rock			0	104			
Grey mud			104	126			
Red rock			126	173			
Line			173	181			
Red rock			181	210			
Line			210	238			
Grey mud			238	280			
Black slate			280	285			
Line			285	295			
Slate			295	305			
Line			305	332			
Red rock			332	342			
Black slate			342	350			
Line			350	364			
Red rock			364	375			
Line			375	394			
Red rock			394	408			
Slate			408	425			
Sand			425	448			
Slate			448	460			
Red rock			460	520			
Line			520	534			
Slate			534	545			
Pink line			545	562			
Red rock			562	575			
slate			575	590			
Line			590	605			
Red rock			605	650			
Gritty line							



JAN 29 1968

Formation	Color	Hard or Soft	Top	Bottom	Oil, Gas or Water	Depth Found	Remarks
Gritty lime		650	665				
Slate		665	705				
Lime		705	818				
P. Coal		818	823				
Slate		823	855				
Sand		855	874				
Slate		874	902				
Hard Gritty lime		902	925				
Red rock		925	950				
Sand		950	976				
Slate		976	983				
Red rock		983	1018				
Lime		1018	1068				
Red rock		1068	1075				
Lime		1075	1120				
Sand		1120	1146				
Red rock		1146	1197				
Slate		1197	1273				
Lime		1273	1295				
Slate		1295	1347				
Lime H. Dunk.		1347	1424				
Slate		1424	1440				
Lime		1440	1465				
Slate		1465	1479				
Lime, G. sand		1479	1530				
Slate		1530	1560				
Gritty Lime		1560	1576				
Slate		1576	1600				
Sand		1600	1607				
Lime		1607	1645				
Sand		1645	1790				
Slate		1790	1845				
Sand		1845	1880				
Slate		1880	1884				
Lime		1884	1898				
Sand 3rd salt		1898	1930				
Slate		1930	1938				
Sand		1938	1960				
Slate		1960	1972				
Gritty Lime		1972	2006				
Black lime		2006	2124				
Slate		2124	2127				
Lime, Little		2127	2153				
Pink rock		2153	2155				
Pencil case		2155	2163				
Big Lime		2163	2214				
jun } Injun sand		2214	2285				
Black lime		2285	2298				
Sand Squaw		2298	2303				
Slate		2303	2334				
Total Depth		2334					

Oil & Gas 2218 2228  
 Log indicated 2220

Date January 13, 1968

APPROVED PT M Oil Co, Owner

By L. S. Pigott  
 (Title)