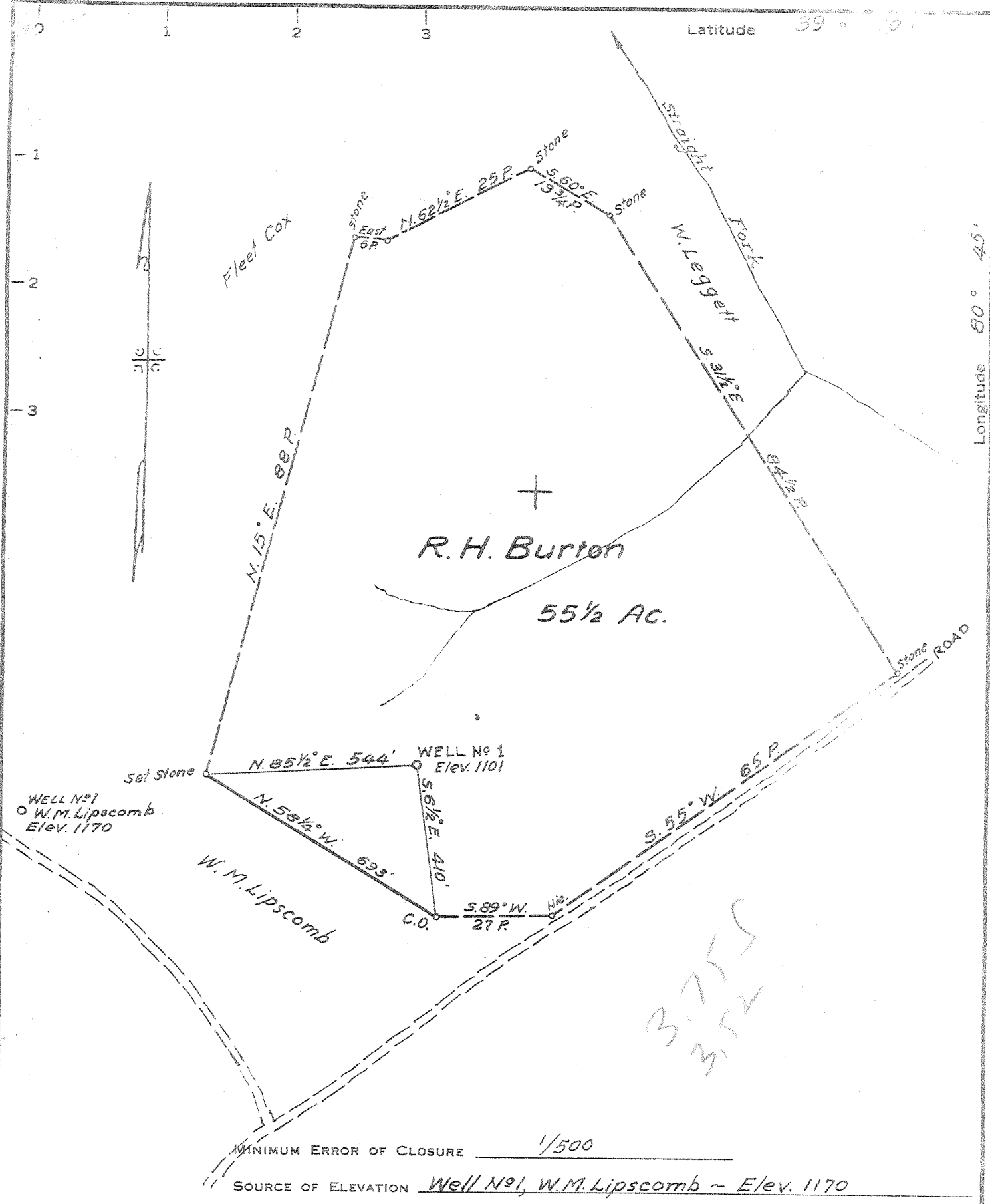


MM

P



MINIMUM ERROR OF CLOSURE 1/500  
 SOURCE OF ELEVATION Well No 1, W.M. Lipscomb - Elev. 1170

New Location   
 Drill Deeper   
 Abandonment

"I, THE UNDERSIGNED, HEREBY CERTIFY THAT THIS MAP IS CORRECT TO THE BEST OF MY KNOWLEDGE AND BELIEF AND SHOWS ALL THE INFORMATION REQUIRED BY PARAGRAPH 6 OF THE RULES AND REGULATIONS OF THE OIL AND GAS SECTION OF THE MINING LAWS OF WEST VIRGINIA."

Company Wolf Run Oil & Gas Co.  
 Address Box 5, Huntington, W. Va.  
 Farm R.H. Burton  
 Tract 1 Acres 55 1/2 Lease No. \_\_\_\_\_  
 Well (Farm) No. 1 Serial No. \_\_\_\_\_  
 Elevation (Spirit Level) 1101  
 Quadrangle Holbrook - FC  
 County Doddridge District Southwest  
 Engineer Parker E. Peters  
 Engineer's Registration No. 485  
 File No. \_\_\_\_\_ Drawing No. \_\_\_\_\_  
 Date April 17, 1967 Scale 1" = 20 P.

STATE OF WEST VIRGINIA  
 DEPARTMENT OF MINES  
 OIL AND GAS DIVISION  
 CHARLESTON

**WELL LOCATION MAP**  
 FILE NO. DOD-1457

+ Denotes location of well on United States Topographic Maps, scale 1 to 62,500, latitude and longitude lines being represented by border lines as shown.

- Denotes one inch spaces on border line of original tracing.

6-6 133

MAY 10 1967



STATE OF WEST VIRGINIA  
DEPARTMENT OF MINES  
OIL AND GAS DIVISION 3

Rotary    
Spudder    
Cable Tools    
Storage    
Oil or Gas Well Gas & Oil

Quadrangle Holbrook  
Permit No. Dodd 1457

WELL RECORD

Company Wolf Run Oil and Gas Co.  
Address Box 5-Huntington, W. Va.  
Farm R.H. Burton Acres 5 1/2  
Location (waters) Straight Fork  
Well No. -1- Elev. 1181'  
District Southern County Doddridge  
The surface of tract is owned in fee by R.H. Burton  
Address Auburn, W. Va.  
Mineral rights are owned by R.H. Burton  
Address \_\_\_\_\_  
Drilling commenced 4-29-67  
Drilling completed 5-24-67  
Date Shot \_\_\_\_\_ From \_\_\_\_\_ To \_\_\_\_\_  
With \_\_\_\_\_

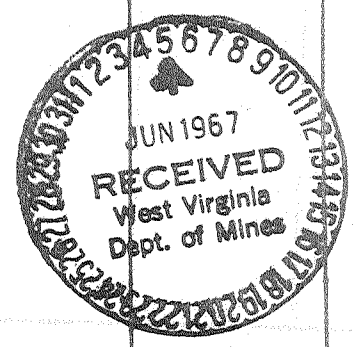
Casing and Tubing	Used in Drilling	Left in Well	Packers
Size			Kind of Packers
16	20'	20'	
18			Size of
18	1122'	0'	Depth set
8 3/4			
8 3/4		2106'	Perf. top
3 3/16			Perf. bottom
4 1/2			Perf. top
3			Perf. bottom
2			
Liners Used			

Open Flow \_\_\_\_\_ /10ths Water in \_\_\_\_\_ Inch  
\_\_\_\_\_ /10ths Merc. in \_\_\_\_\_ Inch  
Volume 15000 Est. Cu. Ft.  
Rock Pressure 100 lbs. 4 hrs.  
Oil Shew bbls., 1st 24 hrs.  
WELL ACIDIZED (DETAILS) 25000 lbs. sand, 500 gals. acid, and 650 bbls. water  
WELL FRACTURED (DETAILS) \_\_\_\_\_

Attach copy of cementing record.  
CASING CEMENTED 1 1/2 SIZE 2106 No. Ft. 5-25-67 Date  
Amount of cement used (bags) 65  
Name of Service Co. Lawson Oil and Gas Well Com. Co.  
COAL WAS ENCOUNTERED AT None FEET \_\_\_\_\_ INCHES  
FEET \_\_\_\_\_ INCHES FEET \_\_\_\_\_ INCHES  
FEET \_\_\_\_\_ INCHES FEET \_\_\_\_\_ INCHES

RESULT AFTER TREATMENT (Initial open flow or rate) 5 to 7 Million cu. ft. 6,000 MCF  
ROCK PRESSURE AFTER TREATMENT 865 HOURS 36 hrs.  
Fresh Water Yes Feet 360' Salt Water \_\_\_\_\_ Feet \_\_\_\_\_  
Producing Sand Injura Depth 2030-2057

Formation	Color	Hard or Soft	Top	Bottom	Oil, Gas or Water	Depth	Remarks
Top Soil			0	20			
Sand			20	30			
Red Rock			30	85			
Sand			85	100			
Red Rock			100	145			
Slate			145	150			
Red Rock			150	165			
Lime			165	170			
Red Rock			170	225			
Slate			225	270			
Red Rock			270	330			
Sand			330	345			
Red Rock			345	370			
Slate			370	412			
Red Rock			412	480			
Slate			480	520			
Lime-Gritty			520	535			
Slate			535	605			
Red Rock			605	627			
Slate			627	640			
Red Rock			640	650			
Sand			650	660			
Red Rock			660	730			
Lime			730	750			
Sand			750	790			
Slate & Shells			790	940			
Lime			940	950			
Slate			950	1000			
Sand			1000	1015			



Formation	Color	Hard or Soft	Top 3	Bottom	Oil, Gas or Water	Depth Found	Remarks
Slate			1015	1040			
Sand			1040	1075			
Hard Slate			1075	1280			
Sand			1280	1330			
Slate			1330	1335			
Sand			1335	1690			
Slate			1690	1706			
Sand			1706	1750			
Sand Broken			1750	1795			
Sand			1795	1835			
Red Lime			1835	1855			
Slate-Lime			1855	1895			
Lime Gritty			1895	1910			
Slate-Pencil			1910	1913			
Lime			1913	1979			
Lime Gritty			1979	2000			
Sand			2000	2025			
Lime Gritty			2025	2030			
Sand - Injun			2030	2057	Show of Oil and Gas		
Slate			2057	2110			
Total Depth			2110				

Date June 3, 1941

APPROVED Wolf Run Oil and Gas Co., Own

By Robert Clarke  
(Title) Agent