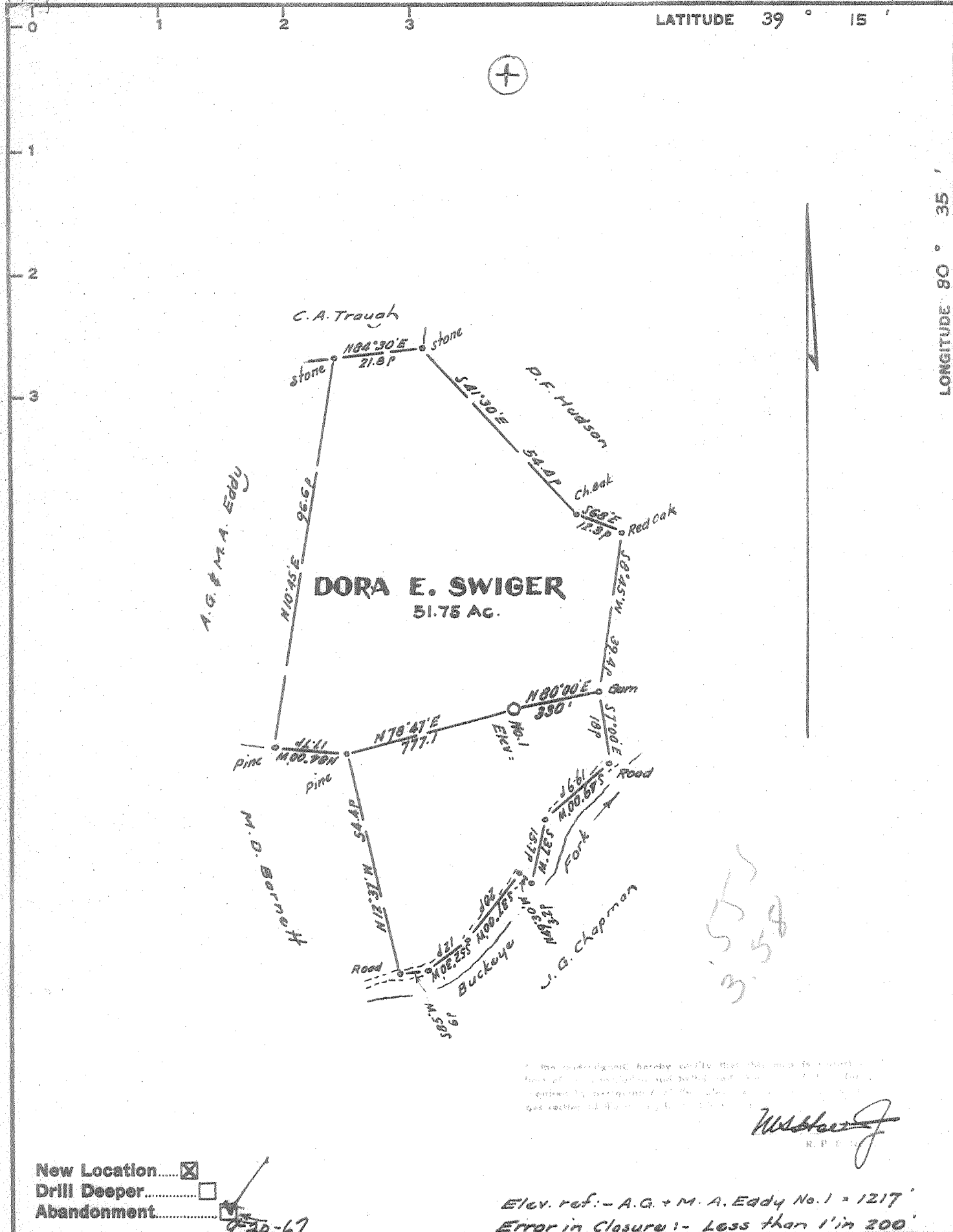


LATITUDE 39 ° 15 '

LONGITUDE 80 ° 35 '



I, the undersigned, hereby certify that this map is a true and correct copy of the original and that the same is a true and correct copy of the original as shown to me by the owner of the same.

W. H. ...
R.P.E.

New Location
 Drill Deeper
 Abandonment

9-20-67

Elev. ref. - A.G. & M.A. Eddy No. 1 = 1217'
 Error in closure - Less than 1' in 200'

Company **LITTLE SWISS OIL & GAS CO.**
 Address **P.O. Box 1834, Huntington, West Va.**
 Farm **Dora E. Swiger**
 Tract **Acres 51.75** Lease No. _____
 Well (Farm) No. **One** Serial No. _____
 Elevation (Spirit Level) **981'**
 Quadrangle **Vadis**
 County **Dodridge** District **Greenbrier**
 Engineer ***W. H. ...***
 Engineer's Registration No. **1227**
 File No. **77A-1** Drawing No. _____
 Date **Dec. 28, 1966** Scale **1" = 800' = 495'**

STATE OF WEST VIRGINIA
 DEPARTMENT OF MINES
 OIL AND GAS DIVISION
 CHARLESTON

WELL LOCATION MAP
 FILE NO. **DDP-1432-P**

+ Denotes location of well on United States Topographic Maps, scale 1 to 62,500, latitude and longitude lines being represented by border lines as shown.

- Denotes one inch spaces on border line of original tracing.



STATE OF WEST VIRGINIA
DEPARTMENT OF MINES
OIL AND GAS DIVISION

Rotary
Spudder
Cable Tools
Storage

Quadrangle Vadis

Permit No. DOD-1432

WELL RECORD

Oil or Gas Well ~~Coal~~ ~~Geothermal~~ ~~Gas~~
(KIND)

Company Joseph H. Hager & Virgil E. Stanley
DBA Little Swiss Oil & Gas Company

Address P. O. Box 1834, Huntington, W. Va. 25719

Farm Ruby M. Devericks Acres 51.75

Location (waters) Alumbank Run

Well No. Dora E. Swiger Well #1 Elev. 981

District Greenbrier County Doddridge

The surface of tract is owned in fee by Ruby M. Devericks

Mineral rights are owned by Ruby M. Devericks & others

Drilling commenced 1-16-67

Drilling completed 2-11-67

Date Shot From To

With

Open Flow /10ths Water in. Inch

/10ths Merc. in. Inch

Volume Cu. Ft.

Rock Pressure lbs. hrs.

Oil bbls., 1st 24 hrs.

WELL ACIDIZED (DETAILS)

WELL FRACTURED (DETAILS) 250 gal 15% Hcl. Acid 28,000 lbs. 20/40 sand
1,000 barrels fresh water 2500 lbs. 10/20 sand

RESULT AFTER TREATMENT (Initial open Flow or bbls.) 350 MCF

ROCK PRESSURE AFTER TREATMENT 450 HOURS

Fresh Water Feet Salt Water Feet

Producing Sand Big Injun Depth 2940 feet

Casing and Tubing	Used in Drilling	Left in Well	Packers
Size			
16	7'	7'	Kind of Packer
13			
10	341'		Size of
8 3/4	1734'	1734'	
6 3/4			Depth set
5 3/16		2180'	
4 1/2			Perf. top single 2080
3			Perf. bottom
2			Perf. top
Liners Used			Perf. bottom

Attach copy of cementing record.

CASING CEMENTED 4-1/2 SIZE No. 2-13-67 Date

Amount of cement used (bags) 75 bags

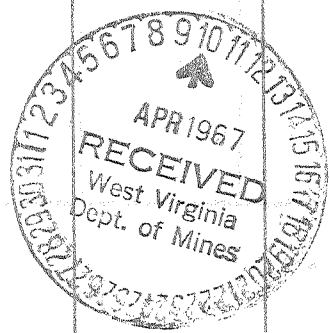
Name of Service Co. Halliburton

COAL WAS ENCOUNTERED AT 320 FEET INCHES

620 FEET INCHES FEET INCHES

FEET INCHES FEET INCHES

Formation	Color	Hard or Soft	Top	Bottom	Oil, Gas or Water	Depth	Remarks
Top Soil		S	0	7			
Sand	Gray	H	7	25			
Slate	Blue	S	25	79			
Rock	Red	S	79	150			
Shale	Blue	S	150	195			
Sand	Gray	H	195	235			
Shale	Blue	S	235	275			
Sand	Gray	H	275	305			
Shale	Blue	S	305	320			
Coal		S	320	322			
Shale	Blue	S	322	347			
Rock	Red	S	347	455			
Shale	Blue	H	455	620			
Coal		S	620	632			
Shale	Gray	S	632	657			
Sand	White	H	657	710			
Shale	Blue	H	710	730			
Rock	Red	S	730	745			
Slate	Gray	S	745	840			
Shale	Blue	S	840	876			
Rock	Red	S	876	900			
Shale	Blue	S	900	940			
Rock	Red	S	940	982			
Slate	Gray	S	982	995			
Sandy Shale	Blue	H	995	1025			
Slate	Gray	S	1025	1040			
Rock	Red	S	1040	1050			
Sandy Shale	Blue	H	1050	1110			
Sand	Gray	H	1110	1130			



over

Formation	Color	Hard or Soft	Top ⁴	Bottom	Oil, Gas or Water	Depth Found	Remarks
Rock	Red	S	1130	1145			
Sandy Shale	Blue	H	1145	1165			
Sand	White	H	1165	1200			
Slate	Gray	S	1200	1240			
Sandy Shale	Blue	H	1240	1260			
Slate	Black	S	1260	1295			
Sandy Shale	Blue	H	1295	1295 1330	1330		
Slate	Gray	S	1330	1380			
Salt Sand 1	Gray	H	1380	1430	Water at	1395'	
Slate	Gray	S	1430	1505			
Salt Sand 2	Gray	S	1505	1555			
Slate	Gray	S	1555	1665			
Salt Sand 3	White	H	1665	1737	Water at	1720'	
Shale	Blue	S	1737	1780			
Slate	Black	S	1780	1828			
Shale	Blue	S	1828	1884			
Rock	Red	S	1884	1892			
Sand	White	H	1892	1904			
Rock	Red	S	1904	1920			
Slate	Gray	S	1920	1931			
Little Lime		H	1931	1940			
Shale	Blue	S	1940	1965			
Slate	Gray	S	1965	1970			
Big Lime	Gray	H	1970	2065			
Injun Sand		H	2065	2100	Gas at	2080'	
Shale	Blue	S	2100	2237			
Sand	Gray	H	2237	2303			
Shale	Blue	H	2303	2450			
Sandy Shale	Gray	H	2450	2457			
Shale	Blue	S	2457	2600			
Rock	Red	S	2600	2610			
Shale	Blue	S	2610	2653			
Sand	Gray	H	2653	2661			
Shale	Blue	S	2661	2721			
Sand Gordon		H	2721	2724			
Slate	Gray	S	2724	2834			
Sandy Shale	Gray	H	2834	2837			
Slate	Gray	S	2837	2940			
TOTAL DEPTH				2940			

Date April 5, 1917

APPROVED Joseph H. Wager Owner
 By _____ Partner
 (Title)