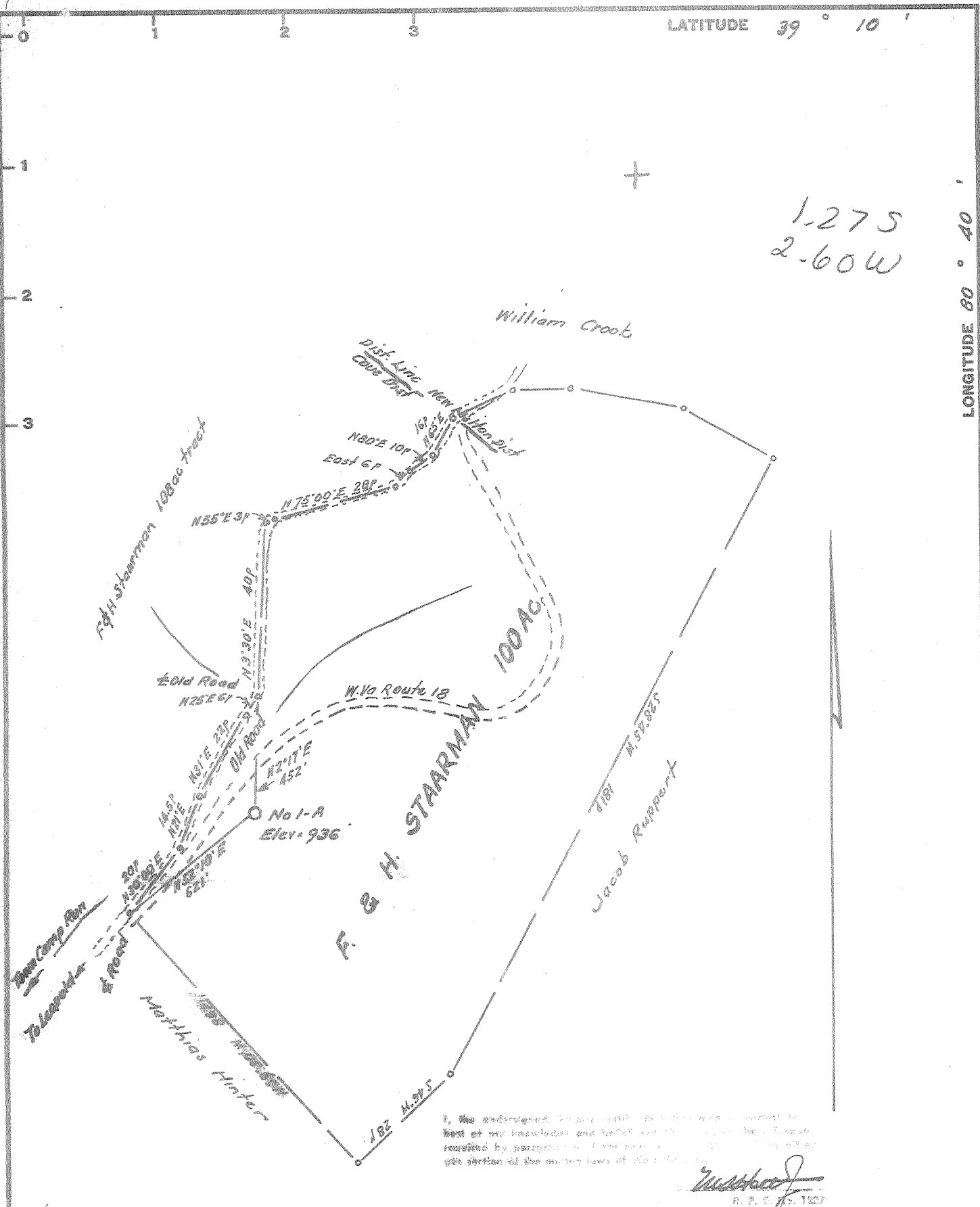


LATITUDE 39° 10'

LONGITUDE 60° 40'

1.275
2.60W



I, the undersigned, do hereby certify that the well location shown on this map is correct to the best of my knowledge and belief and that the same is in compliance with the laws of the State of West Virginia and the provisions of the act of the Legislature of the State of West Virginia, approved March 10, 1927, relating to the location of wells.

W. H. H. H.
R. P. C. S. 1327

New Location
 Drill Deeper
 Abandonment

Elev. ref.: - Well No 1-A Matthias Hinter = 911
 Error in Closure: - Less than 1' in 200'

Company SOUTHERN TRIANGLE OIL CO.
 Address Mt Carmel, Illinois
 Farm F. & H. Starmann
 Tract Acres 100.25 Lease No. _____
 Well (Farm) No. One - A Serial No. _____
 Elevation (Spirit Level) 936'
 Quadrangle Vadis - Wc
 County Doddridge District Cove
 Engineer *W. H. H. H.*
 Engineer's Registration No. 1227
 File No. _____ Drawing No. _____
 Date Oct. 26, 1966 Scale 1" = 30 p = 495'

STATE OF WEST VIRGINIA
 DEPARTMENT OF MINES
 OIL AND GAS DIVISION
 CHARLESTON

WELL LOCATION MAP
 FILE NO. 202-1419

+ Denotes location of well on United States Topographic Maps, scale 1 to 62,500, latitude and longitude lines being represented by border lines as shown.
 - Denotes one inch spaces on border line of original tracing.



STATE OF WEST VIRGINIA
DEPARTMENT OF MINES
OIL AND GAS DIVISION 15

Quadrangle Vadis
Permit No. DOD-1419

WELL RECORD

Oil or Gas Well both
(KIND)

Company Southern Triangle Oil Co.
Address Box 230, Mt. Carmel, Ill. 62863
Farm F. H. Staarman Acres 25
Location (waters) Fallen Timber
Well No. 1-A Elev. _____
District Cove County Doddridge
The surface of tract is owned in fee by F. & H. Staarman
Address New Milton, W. Va.
Mineral rights are owned by same
Address _____

Drilling commenced November 3, 1966
Drilling completed December 4, 1966
Date Shot _____ From _____ To _____
With _____
Open Flow _____ /10ths Water in _____ Inch
_____ /10ths Merc. in _____ Inch
Volume show _____ Cu. Ft.
Rock Pressure _____ lbs. _____ hrs.
Oil show _____ bbls., 1st 24 hrs.

WELL ACIDIZED _____
WELL FRACTURED Dowell with 1,000 bbls. water

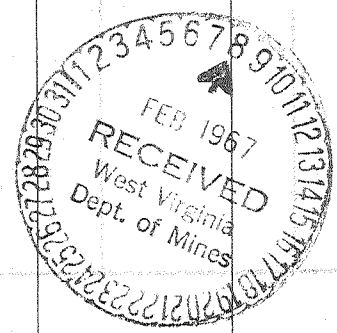
| Casing and Tubing | Used in Drilling | Left in Well | Packers |
|-------------------|------------------|--------------|--------------------------|
| Size | | | Kind of Packer |
| 16 | | | |
| 13 | 18' | 18' | |
| 10 | 199' | -0- | Size of |
| 8 3/4 | 803 | -0- | |
| 6 3/4 | 1517 | -0- | Depth set |
| 5 3/16 | | | |
| 3 | | | Perf. top <u>2206</u> |
| 2 | | | Perf. bottom <u>2212</u> |
| Liners Used | | | Perf. top _____ |
| | | | Perf. bottom _____ |

CASING CEMENTED 4 1/2 SIZE 2280 No. Ft. 12-4-66 Date
with 80 sks/ cement

COAL WAS ENCOUNTERED AT _____ FEET _____ INCHES
_____ FEET _____ INCHES FEET _____ INCHES
_____ FEET _____ INCHES FEET _____ INCHES

RESULT AFTER TREATMENT 200 cu. ft. per day and 80 bbl. oil per day *Big Injun*
ROCK PRESSURE AFTER TREATMENT 600# 24 hrs.
Fresh Water _____ Feet _____ Salt Water _____ Feet _____

| Formation | Color | Hard or Soft | Top | Bottom | Oil, Gas or Water | Depth | Remarks |
|----------------------------------|-------|--------------|-----|--------|-------------------|-------|---------|
| red rock & sand | | | 0 | 18 | | | |
| red rock | | | 18 | 55 | | | |
| sand | | | 55 | 108 | | | |
| slate | | | 108 | 130 | | | |
| sand | | | 130 | 177 | | | |
| red rock & slate | | | 177 | 210 | | | |
| sand | | | 210 | 240 | | | |
| red rock | | | 240 | 290 | | | |
| red rock & shells | | | 290 | 325 | | | |
| slate & shells | | | 325 | 329 | | | |
| sand | | | 329 | 340 | | | |
| sand red rock & shale | | | 340 | 360 | | | |
| sand | | | 360 | 384 | | | |
| red rock | | | 384 | 405 | | | |
| sand | | | 405 | 440 | | | |
| red rock & shells | | | 440 | 470 | | | |
| red rock | | | 470 | 500 | | | |
| sand | | | 500 | 525 | | | |
| shale | | | 525 | 561 | | | |
| red rock | | | 561 | 580 | | | |
| slate, sandy | | | 580 | 596 | | | |
| lime, sandy | | | 595 | 627 | | | |
| shale & red rock | | | 627 | 670 | | | |
| slate & shells | | | 670 | 720 | | | |
| sand, hole full of water | | | 720 | 768 | | | |
| slate & shells | | | 768 | 790 | | | |



| Formation | Color | Hard or Soft | Top 15 | Bottom | Oil, Gas or Water | Depth Found | Remarks |
|--|-------|--------------|--------|---------|-------------------|-------------|---------|
| red rock & slate | | | 790 | 804 | | | |
| sand | | | 804 | 835 | | | |
| sand & slate | | | 835 | 840 | | | |
| red rock | | | 840 | 880 | | | |
| shale and red rock | | | 880 | 890 | | | |
| sand & lime | | | 890 | 900 | | | |
| red rock & shale | | | 900 | 940 | | | |
| sand | | | 940 | 960 | | | |
| sand & slate | | | 960 | 982 | | | |
| sand & lime | | | 982 | 995 | | | |
| slate & lime | | | 995 | 1044 | | | |
| red rock | | | 1044 | 1060 | | | |
| sand | | | 1060 | 1116 | | | |
| slate, shells & red rock | | | 1116 | 1190 | | | |
| slate, sandy | | | 1190 | 1281 | | | |
| slate & shells | | | 1281 | 1335 | | | |
| sand | | | 1335 | 1345 | | | |
| slate & sand | | | 1345 | 1368 | | | |
| slate & shells | | | 1368 | 1392 | | | |
| slate | | | 1392 | 1430 | | | |
| sand & slate | | | 1430 | 1476 | | | |
| sand, hole full of water | | 1510 | 1476 | 1573 | | | |
| slate, sandy | | | 1573 | 1600 | | | |
| slate & shells | | | 1600 | 1690 | | | |
| sand | | | 1690 | 1724 | | | |
| slate & shells | | | 1724 | 1775 | | | |
| sand | | | 1775 | 1821 | | | |
| slate | | | 1821 | 1840 | | | |
| sand, 2 bailors water per hr. | | | 1840 | 1875 | | | |
| slate | | | 1875 | 1897 | | | |
| slate | | | 1897 | 1933 | | | |
| sand | | | 1933 | 1964 | | | |
| slate & red rock | | | 1964 | 1973 | | | |
| sand & slate (water decreased to 16 gal/hr.) | | | 1973 | 1983 | | | |
| sand, broken | | | 1983 | 1995 | | | |
| red rock | | | 1995 | 2003 | | | |
| slate | | | 2003 | 2014 | | | |
| slate & lime | | | 2014 | 2023 | | | |
| lime (Little Lime) | | | 2023 | 2048 | | | |
| sand | | | 2048 | 2055 | | | |
| sand & slate | | | 2055 | 2065 | | | |
| sand & Lime, slight show of oil | | | 2065 | 2075 | | | |
| lime (Big Lime) | | | 2075 | 2143 | | | |
| sand, show of gas | | | 2143 | 2170 | | | |
| lime | | | 2170 | 2201 | | | |
| sand | | | 2201 | 2226 | | | |
| slate | | | 2226 | 2280 | | | |
| | | | | 2280 TD | | | |

Date 2-6-67, 19

APPROVED Southwestern Tri-County Oil Co., Owner

By James E. Caprin, Seal.
(Title)