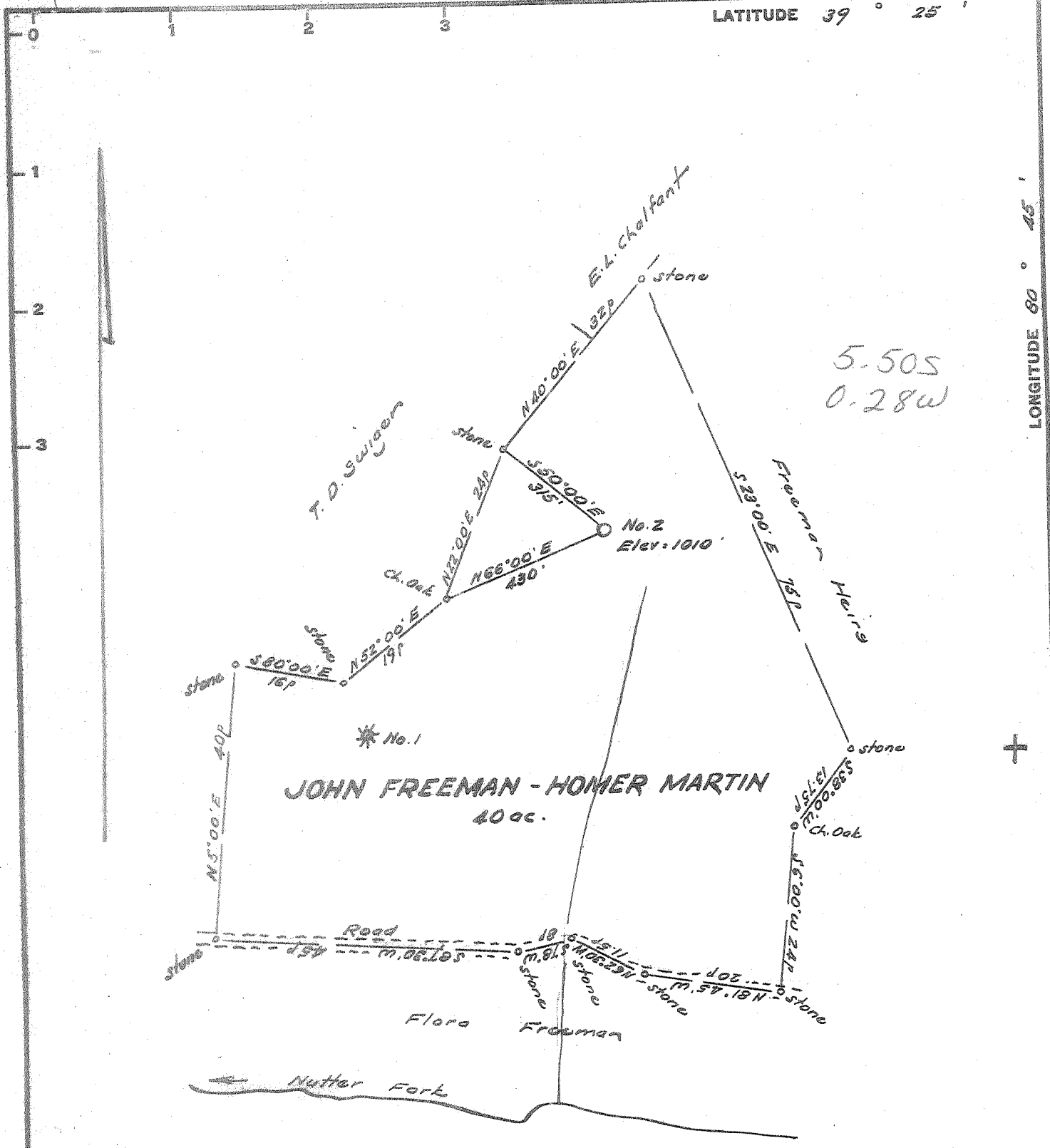


10-17-66 JPS

LATITUDE 39° 25'

LONGITUDE 80° 45'



5.50S
0.28W

I, the undersigned, do hereby certify that this map is correct
 and that the location of the well is as shown. All of the information
 required by law to be shown on this map has been shown. I am a duly
 qualified and licensed professional engineer in the State of West Virginia.

W. H. Mosser
 Engineer

New Location.....
 Drill Deeper.....
 Abandonment.....

Elevation at Knight Fork School = 1169'
 Error in Closure: - Less than 1' in 200'

Company W. H. Mosser
 Address 101 E. Main St., Harrisville, W. Va.
 Farm John Freeman - Homer Martin
 Tract _____ Acres 40 Lease No. _____
 Well (Farm) No. Two Serial No. _____
 Elevation (Spirit Level) 1010
 Quadrangle West Union EC
 County Doddridge District West Union
 Engineer W. H. Mosser
 Engineer's Registration No. 1227
 File No. _____ Drawing No. _____
 Date Oct 2, 1966 Scale 1" = 200' = 330'

STATE OF WEST VIRGINIA
 DEPARTMENT OF MINES
 OIL AND GAS DIVISION
 CHARLESTON

WELL LOCATION MAP
 FILE NO. DOD - ~~1416~~ 1416

+ Denotes location of well on United States Topographic Maps, scale 1 to 62,500, latitude and longitude lines being represented by border lines as shown.
 - Denotes one inch spaces on border line of original tracing.



STATE OF WEST VIRGINIA
DEPARTMENT OF MINES
OIL AND GAS DIVISION

Rotary
Spudder
Cable Tools
Storage
Oil or Gas Well **Oil & Gas**
(KIND)

Quadrangle West Union
Permit No. DOD-1416

WELL RECORD

Company <u>W. H. Mossor</u>	Casing and Tubing	Used in Drilling	Left in Well	Packers
Address <u>101 E. Main St., Harrisville, W. Va.</u>	Size			Kind of Packer
Farm <u>Homer Martin</u> Acres <u>40</u>	16			<u>None</u>
Location (waters) <u>Nutters Fork</u>	13	522		Size of
Well No. <u>Two</u> Elev. <u>1010</u>	10	1110		Depth set
District <u>West Union</u> County <u>Doddridge</u>	8 1/4	1993		
The surface of tract is owned in fee by <u>Homer Martin</u>	6 5/8		2808	Perf. top <u>2132</u>
Address <u>West Union, W. Va.</u>	5 3/16			Perf. bottom <u>2142</u>
Mineral rights are owned by <u>Same</u>	4 1/2			Perf. top <u>2745</u>
Address	3			Perf. bottom <u>2750</u>
Drilling commenced <u>November 14, 1966</u>	2			
Drilling completed <u>February 3, 1967</u>	Liners Used			
Date Shot From To	Attach copy of cementing record.			
With	CASING CEMENTED <u>4 1/2</u> SIZE <u>1000</u> No. Ft. <u>2-8-67</u> Date			
Open Flow /10ths Water in Inch	Amount of cement used (bags) <u>160</u>			
/10ths Merc. in Inch	Name of Service Co. <u>Halliburton Company</u>			
Volume <u>10MCF</u> Cu. Ft.	COAL WAS ENCOUNTERED AT <u>None</u> FEET INCHES			
Rock Pressure <u>Not taken</u> lbs. hrs.	FEET INCHES FEET INCHES			
Oil <u>1/2 BOPD</u> bbls., 1st 24 hrs.	FEET INCHES FEET INCHES			
WELL ACIDIZED (DETAILS)	WELL FRACTURED (DETAILS) <u>Halliburton, 2-17-67</u> <u>109,000 lb. sand, 88620 gal water</u>			
	<u>500 gal HCL Frac Pressure 2700-3400 PSI</u>			
	RESULT AFTER TREATMENT (Initial open Flow or bbls.) <u>165 MCF 2BOPD</u> <u>Oil - Big Injun</u>			
	ROCK PRESSURE AFTER TREATMENT <u>230 PSI</u> HOURS <u>24 hrs.</u> <u>Oil & Gas - Big Injun & Gordon</u>			
	Fresh Water <u>None</u> Feet <u>None</u> Salt Water <u>None</u> Feet			
	Producing Sand <u>Big Injun 2132-2142</u> <u>Gas</u> <u>Gordon 2745-2750</u> Depth			

Formation	Color	Hard or Soft	Top	Bottom	Oil, Gas or Water	Depth	Remarks
Slate			0	280			
Red Rock			280	395			
Slate			395	480			
Red Rock			480	555			
Sand			555	790			
Hard Rock			790	835			
Slate			835	1220			
Red Rock			1220	1225			
Slate			1225	1420			
Sand			1420	1775			
Slate			1775	1900			
Line			1900	1950			
Slate			1950	1960			
Slate			1950	1960			
Big Line			1960	2055			
Big Injun			2055	2180			
Slate			2180	2295			
Sand (Weir)			2295	2400			
Slate			2400	2645			
Gordon Stray			2645	2655			
Slate			2655	2745			
Gordon			2745	2750			
Slate			2750	2808	TD		

