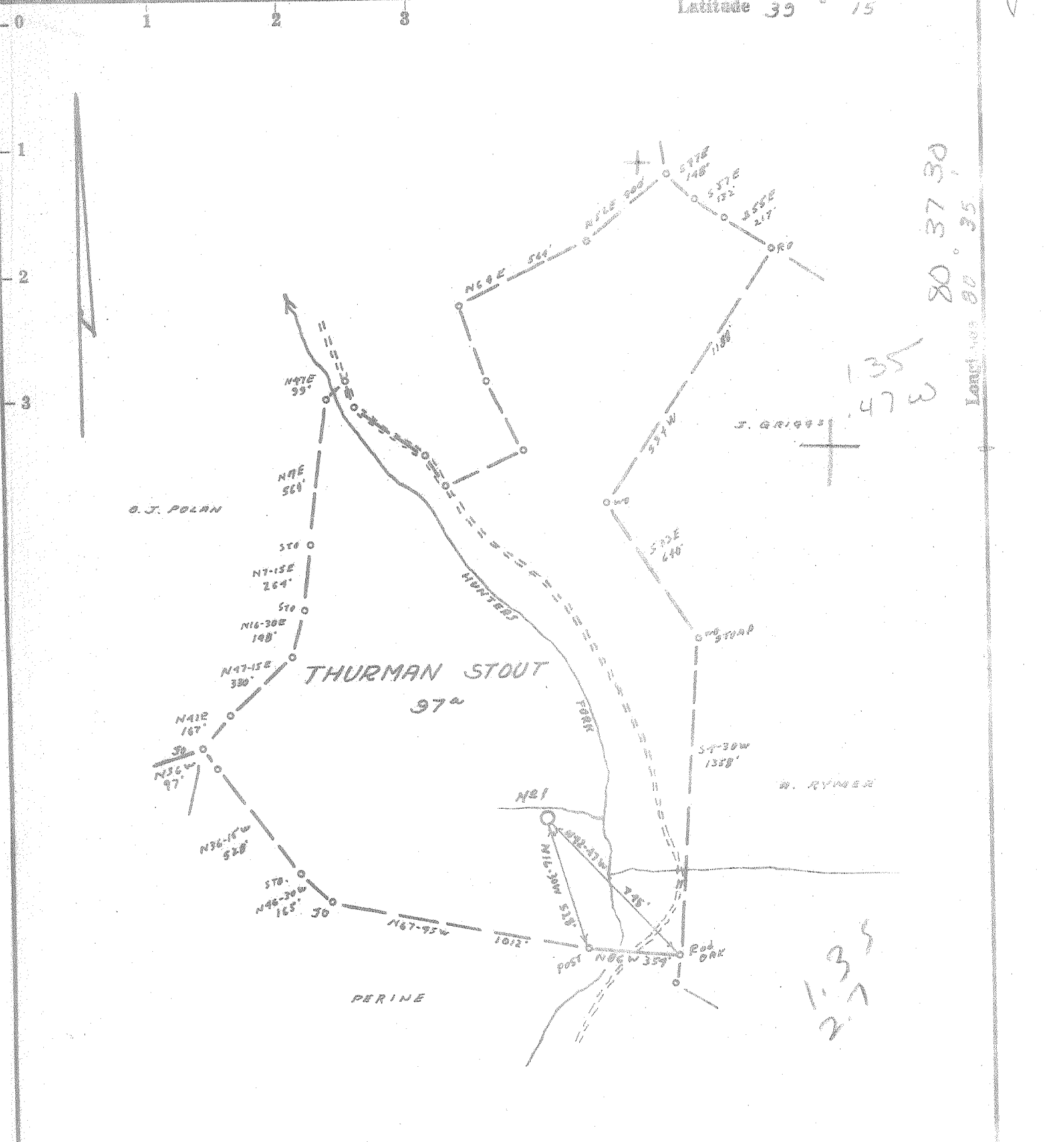


M

P

Latitude 39 15



80° 37' 30"

135  
47W

Longitude 80° 35'

135  
2.7

- Fracture.....
- Redrill.....
- New Location.
- Drill Deeper.....
- Abandonment.....

Source of Elevation ROAD PARK AT BULLEYE RUN. ELV. 890'

I, the undersigned, hereby certify that this map is correct to the best of my knowledge and belief and shows all the information required by paragraph 6 of the rules and regulations of the oil and gas section of the mining laws of West Virginia.

Minimum accuracy, one part in 200

Company J. E. WEBBER  
 Address MORGANVILLE, W.VA.  
 Farm THURMAN STOUT  
 Tract \_\_\_\_\_ Acres 97 Lease No. \_\_\_\_\_  
 Well (Farm) No. 1 Serial No. \_\_\_\_\_  
 Elevation (Spirit Level) 910'  
 Quadrangle VADIS NW 22 NC  
 County DODDRIDGE District GREENBRIER  
 Engineer James Duffin  
 Engineer's Registration No. 1084  
 File No. 211/150 Drawing No. \_\_\_\_\_  
 Date 7-4-66 Scale 1" = 500'

STATE OF WEST VIRGINIA  
DEPARTMENT OF MINES  
OIL AND GAS DIVISION  
CHARLESTON

WELL LOCATION MAP  
FILE NO. DoD-1393

+ Denotes location of well on United States Topographic Maps, scale 1 to 62,500, latitude and longitude lines being represented by border lines as shown.

- Denotes one inch spaces on border line of original tracing.

6-6 29



STATE OF WEST VIRGINIA  
DEPARTMENT OF MINES  
OIL AND GAS DIVISION

Rotary   
Spudder   
Cable Tools   
Storage

Quadrangle Center Point

WELL RECORD

Permit No. Dod 1393

Oil or Gas Well Gas  
(KIND)

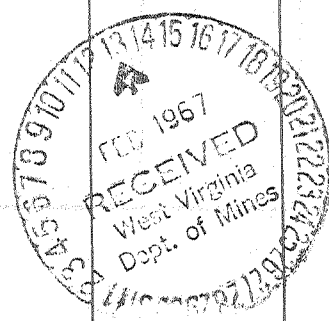
Company <u>Webber Associates</u>	Casing and Tubing	Used in Drilling	Left in Well	Packers
Address <u>Morgansville, W. Va.</u>	Size			Kind of Packer
Farm <u>Stout</u> Acres <u>57</u>	16	20		
Location (waters) <u>Hunters Fork</u>	13			Size of
Well No. <u>1</u> Elev. <u>910</u>	10	440		Depth set
District <u>Greenbrier</u> County <u>Doddridge</u>	8 1/4	1242		
The surface of tract is owned in fee by <u>Stout Heirs</u>	6 5/8	1940		
Address <u>Salem, W. Va.</u>	5 3/16		2120	
Mineral rights are owned by <u>Stout Heirs</u>	4 1/2	2120		Perf. top
Address <u>Salem, W. Va.</u>	3			Perf. bottom
Drilling commenced <u>July 1, 1966</u>	2			Perf. top
Drilling completed <u>Oct. 26, 1966</u>	Liners Used			Perf. bottom
Date Shot From To				
With				

Open Flow /10ths Water in \_\_\_\_\_ Inch  
 /10ths Merc. in \_\_\_\_\_ Inch  
 Volume show Cu. Ft.  
 Rock Pressure \_\_\_\_\_ lbs. \_\_\_\_\_ hrs.  
 Oil \_\_\_\_\_ bbls., 1st 24 hrs.

Attach copy of cementing record.  
 CASING CEMENTED 4 1/2 SIZE 2120 No. Ft. \_\_\_\_\_ Date \_\_\_\_\_  
 Amount of cement used (bags) 45  
 Name of Service Co. Dowell  
 COAL WAS ENCOUNTERED AT \_\_\_\_\_ FEET \_\_\_\_\_ INCHES  
 \_\_\_\_\_ FEET \_\_\_\_\_ INCHES \_\_\_\_\_ FEET \_\_\_\_\_ INCHES  
 \_\_\_\_\_ FEET \_\_\_\_\_ INCHES \_\_\_\_\_ FEET \_\_\_\_\_ INCHES

WELL ACIDIZED (DETAILS) \_\_\_\_\_  
 WELL FRACTURED (DETAILS) 1300 Bbls. 46,000 \$ sand  
 RESULT AFTER TREATMENT (Initial open Flow or bbls.) 880,000 MCF  
 ROCK PRESSURE AFTER TREATMENT 680 HOURS 48  
 Fresh Water \_\_\_\_\_ Feet Salt Water \_\_\_\_\_ Feet  
 Producing Sand Big Injun Depth \_\_\_\_\_

Formation	Color	Hard or Soft	Top	Bottom	Oil, Gas or Water	Depth	Remarks
Dirt			0	5			
Slate			5	35			
Sand			35	55			
Slate			55	100			
Red Rock			100	103			
Gray Slate			103	125			
Red Rock			125	129			
Coal			129	130			
Slate			130	150			
Slate			150	175			
Sand Hard			175	205			
Slate			205	210			
Sand			210	245			
Slate			245	275			
Slate Dark			275	287			
Slight Light			287	304			
Red Rock			304	332			
Slate and shells			332	349			
Red Rock			349	370			
Sand and shells			370	395			
Gray Slate			395	416			
Sand			416	470			
Slate gray			470	575			
Slate			575	615			
Gritty lime			615	665			
Red Rock			665	692			
Slate			692	740			
Red Rock			740	760			
Slate			760	780			
Red Rock			780	795			



Formation	Color	Hard or Soft	Top 10	Bottom	Oil, Gas or Water	Depth Found	Remarks
late			795	810			
blue shells			810	816			
row coal			816	818			
blue shells			818	830			
red Rock			830	845			
late			845	891			
row coal			891	894			
late			894	905			
lime			905	960			
late			960	1000			
red Rock			1000	1015			
and			1015	1040			
black Lime			1040	1055			
late			1055	1098			
and			1098	1135			
late and Shells			1135	1324			
and			1324	1360			
late and shells			1360	1600			
and			1600	1710			
Slate and Shells			1710	1825			
and			1825	1830			
red Rock			1830	1855			
white Slate			1855	1860			
lime and Shells			1860	1895			
little Lime			1895	1920			
concrete			1920	1930			
g Lime			1930	1998			
and Big Lign			1998	2078			
late			2078	2134			
late			2134				

Date Jan 20, 1859

APPROVED Webber Assoc, Owner

By Jack E. Webber  
(Title)