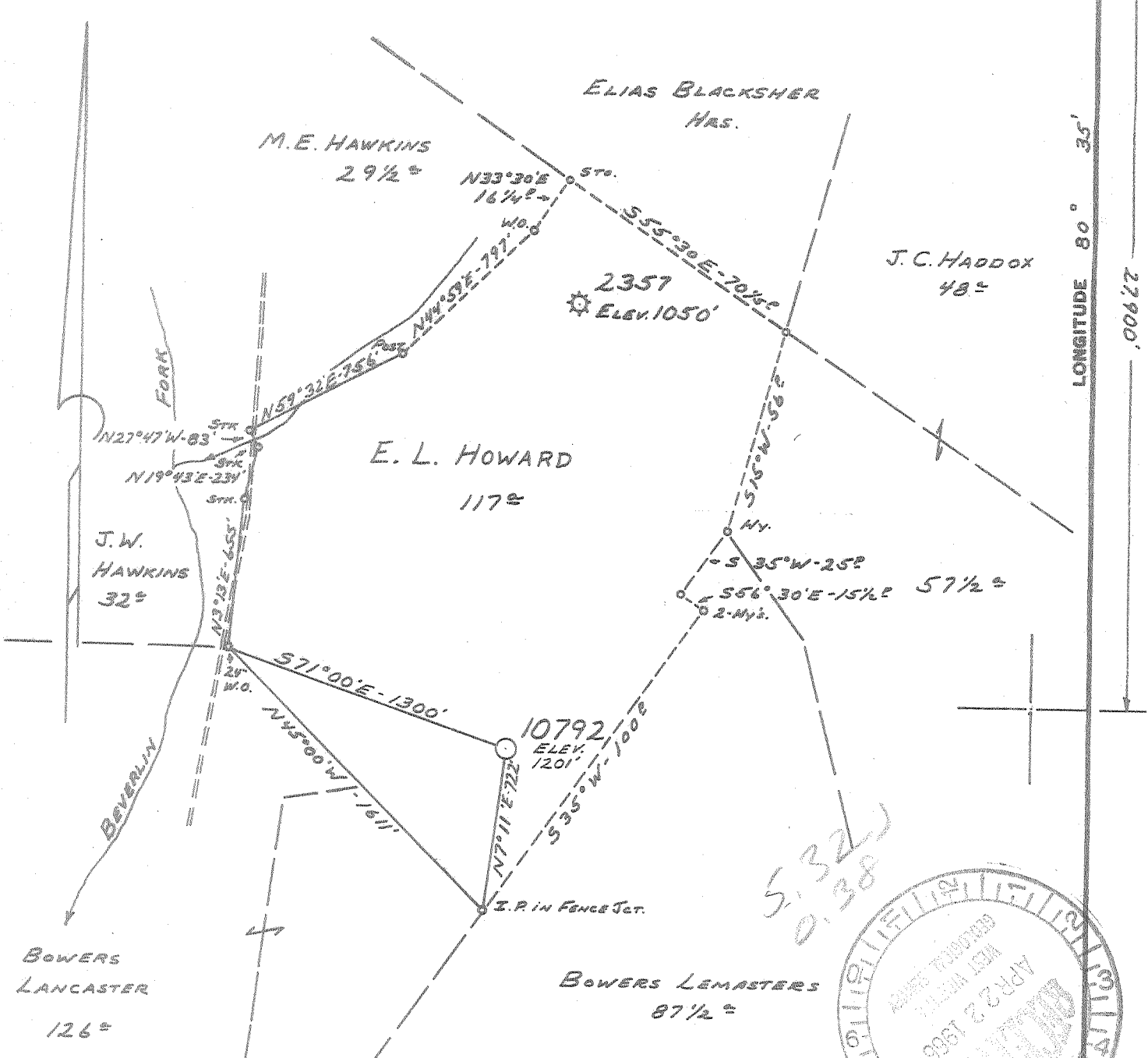


3-30-66 - 2100

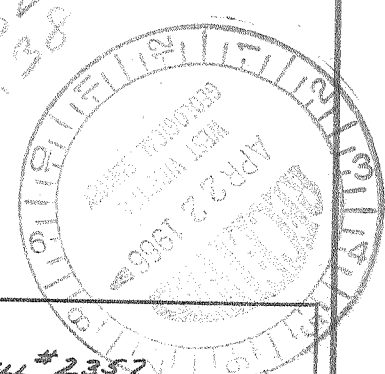
LATITUDE 39° 30'

LONGITUDE 80° 35'

27900'



5.32  
0.38



Minimum Error of Closure 1' IN 200'  
 Source of Elevation CONSOLIDATED GAS SUPPLY CORP. WELL #2357  
ELEV. - 1050'

"I, the undersigned, hereby certify that this map is correct to the best of my knowledge and belief and shows all the information required by paragraph 6 of the rules and regulations of the oil and gas section of the mining laws of West Virginia."

New Location   
 Drill Deeper   
 Abandonment

MAP SHEET 45 S-2, E-2      F.B. 1382 PG. 27-29

Company CONSOLIDATED GAS SUPPLY CORP.  
 Address CLARKSBURG, W.VA.  
 Name E. L. HOWARD  
 Acreage 117      Lease No. 20096  
 Well (Farm) No. \_\_\_\_\_      Serial No. 10792  
 Elevation (Spirit Level) 1201'  
 Quadrangle CENTERPOINT NC  
 County DODDRIODGE      District MCCLELLAN  
 Engineer Jackson M. Jarvis  
 Engineer's Registration No. 2397  
 File No. \_\_\_\_\_      Drawing No. \_\_\_\_\_  
 Date 3-10-66      Scale 1" = 660'

STATE OF WEST VIRGINIA  
 DEPARTMENT OF MINES  
 OIL AND GAS DIVISION  
 CHARLESTON

**WELL LOCATION MAP**  
 FILE NO. DOD-1363

+ Denotes location of well on United States Topographic Maps, scale 1 to 62,500, latitude and longitude lines being represented by border lines as shown.

- Denotes one inch spaces on border line of original tracing.



STATE OF WEST VIRGINIA  
DEPARTMENT OF MINES  
OIL AND GAS DIVISION /

Rotary   
Spudder   
Cable Tools   
Storage

Quadrangle **CENTERPOINT**

Permit No. **DOD-1363**

**WELL RECORD**

Oil or Gas Well  **Dry Hole**  
(KIND)

Company **Consolidated Gas Supply Corporation**  
Address **Clarksburg W. Va.**  
Farm **E. L. Howard** Acres **117**  
Location (waters) \_\_\_\_\_  
Well No. **10792** Elev. **1201'**  
District **McClellan** County **Doddridge**  
The surface of tract is owned in fee by \_\_\_\_\_  
Address \_\_\_\_\_  
Mineral rights are owned by \_\_\_\_\_  
Address \_\_\_\_\_

Casing and Tubing	Used in Drilling	Left in Well	Packers
Size			Kind of Packer
16			
13			Size of
10	418	418	Depth set
8 1/4	1306	None	
6 3/4	1985	1985	
5 3/16			Perf. top
4 1/2	2357	2357	Perf. bottom
3			Perf. top
2			Perf. bottom
Liners Used			

Drilling commenced **5-23-66**  
Drilling completed **6-27-66**  
Date Shot **Not shot** From \_\_\_\_\_ To \_\_\_\_\_  
With \_\_\_\_\_  
Open Flow \_\_\_\_\_ /10ths Water in \_\_\_\_\_ Inch  
\_\_\_\_\_ /10ths Merc. in \_\_\_\_\_ Inch  
Volume **Dry Hole** \_\_\_\_\_ Cu. Ft.  
Rock Pressure **Not taken** \_\_\_\_\_ lbs. \_\_\_\_\_ hrs.  
Oil **None** \_\_\_\_\_ bbls., 1st 24 hrs.

Attach copy of cementing record. **4 1/2"** casing cemented w/50 b  
CASING CEMENTED \_\_\_\_\_ SIZE \_\_\_\_\_ No. Ft. \_\_\_\_\_ Date \_\_\_\_\_  
Amount of cement used (bags) **50 bags**  
Name of Service Co. **Garaton Service**  
COAL WAS ENCOUNTERED AT **310 FEET 2 1/2 INCHES**  
**840 FEET 60 INCHES FEET INCHES**  
**FEET INCHES FEET INCHES**

WELL ACIDIZED (DETAILS) **No**  
WELL FRACTURED (DETAILS) **NOX 7-6-66 45,000# 20-40 sand, 1500# glass beads and 960bbl water**

RESULT AFTER TREATMENT (Initial open Flow or bbls.) **No results 11 M**  
ROCK PRESSURE AFTER TREATMENT **Not taken** HOURS \_\_\_\_\_  
Fresh Water **See log** Feet \_\_\_\_\_ Salt Water **See log** Feet \_\_\_\_\_  
Producing Sand **Injun (Dry)** Depth \_\_\_\_\_

Formation	Color	Hard or Soft	Top	Bottom	Oil, Gas or Water	Depth	Remarks
Shale			0	15			
Sand			15	23			
Red Rock			23	60			
Slate			60	100			
Red Rock			100	150			
Slate			150	190			
Red Rock			190	270			
Slate			270	310			
COAL			310	312			
Black Slate			312	330			
Lime			330	350			
Red Rock			350	360			
Slate			360	400			
Red Rock			400	410			
Slate & Shells			410	467			
Sand			467	482			
Slate			482	502			
Sand			502	550			
Slate			550	580			
Lime			580	710			
Slate & Shells			710	840			
COAL			840	845			
Slate & Shells			845	890			
Lime			890	910			
Slate & Shells			910	930			
Lime			930	950			
Slate & Shells			950	980			
Red Rock			980	1000			
Lime & Sand			1000	1025			

Formation	Color	Hard or Soft	Top	Bottom	Oil, Gas or Water	Depth Found	Remarks
Red Rock			1025	1035			
Lime			1035	1060			
Red Rock			1060	1075			
Slate & Shells			1075	1125			
Red Rock			1125	1205			
Black Slate			1205	1240			
Sand			1240	1317			
Black Slate			1317	1334			
Sand			1334	1390	Water @ 1360		1/2 bailer - hr
Slate			1390	1405			
Sand			1405	1420			
Lime			1420	1450			
Slate & Shells			1450	1495			
Sand			1495	1540			
Slate			1540	1585			
Sand			1585	1640	Water @ 1600		Hole full
Slate & Shells			1640	1960			
Red Rock			1960	1980			
Slate & Shells			1980	1990			
Lime			1990	2000			
Red Rock & Shells			2000	2020			
Slate & Shells			2020	2068			
Lime			2068	2100			
Pencil Slate			2100	2105			
BIG LIME			2105	2190			
Sand <i>IN JUM</i>			2190	2300	Gas	2267-78	11 M after frac
Slate & Shells			2300	2350			
TOTAL DEPTH				2351			

2105  
1201  
-----  
904

Date July 21, 1966, 19

APPROVED Consolidated Gas Supply Corporation owner

By \_\_\_\_\_ (Title)