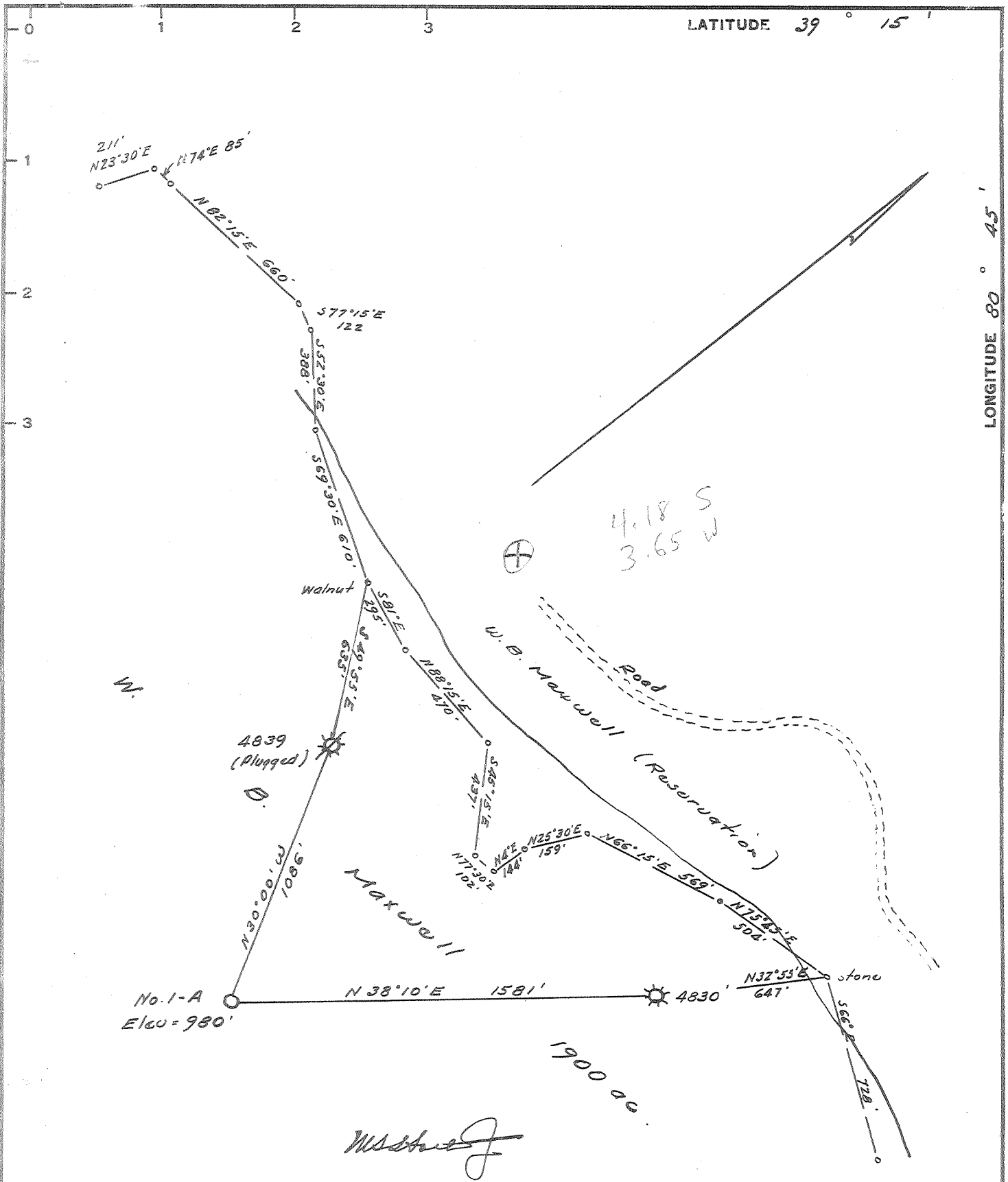


22

P



New Location   
 Drill Deeper   
 Abandonment

Elev. reference: - Well 4830 = 1073'  
 Error in Closure: - Less than 1' in 200'

Company George W. Moses.  
 Address P.O. Box 309, Clarksburg  
 Farm W. B. Maxwell  
 Tract \_\_\_\_\_ Acres 1900 Lease No. \_\_\_\_\_  
 Well (Farm) No. 1-A Serial No. \_\_\_\_\_  
 Elevation (Spirit Level) 980'  
 Quadrangle Holbrook NE  
 County Doddridge District Southwest  
 Engineer W. B. Maxwell  
 Engineer's Registration No. 1227  
 File No. \_\_\_\_\_ Drawing No. \_\_\_\_\_  
 Date Nov. 30, 1965 Scale 1" = 500'

STATE OF WEST VIRGINIA  
 DEPARTMENT OF MINES  
 OIL AND GAS DIVISION  
 CHARLESTON

WELL LOCATION MAP  
 FILE NO. DOD-1342

plugged 3/23/1966  
 † Denotes location of well on United States Topographic Maps, scale 1 to 62,500, latitude and longitude lines being represented by border lines as shown.  
 - Denotes one inch spaces on border line of original tracing.

6-6 133



STATE OF WEST VIRGINIA  
DEPARTMENT OF MINES  
OIL AND GAS DIVISION //

Rotary   
Spudder   
Cable Tools   
Storage

Quadrangle \_\_\_\_\_  
Permit No. DOD-1342

**WELL RECORD**

Oil or Gas Well DRY (110)

Company George W. Moses  
Address Box 309, Clarksburg, W. Va.  
Farm W. B. Maxwell Acres 1900  
Location (waters) \_\_\_\_\_  
Well No. ONE Elev. 980  
District SOUTHWEST County DODDRIDGE  
The surface of tract is owned in fee by \_\_\_\_\_  
Address \_\_\_\_\_  
Mineral rights are owned by W. Brent Maxwell Heirs  
Box 1450 Address Clarksburg, W. Va.  
Drilling commenced 12-28-65  
Drilling completed 2-19-66  
Date Shot \_\_\_\_\_ From \_\_\_\_\_ To \_\_\_\_\_  
With \_\_\_\_\_

Casing and Tubing	Used in Drilling	Left in Well	Packers
Size			Kind of Packer
16	22	22	
13			Size of
10	228		
8 1/4	810		Depth set
6 3/4	1650		
5 3/16			Perf. top <u>1707</u>
4 1/2	1803	1803	Perf. bottom <u>1712</u>
3			Perf. top <u>1721</u>
2			Perf. bottom <u>1726</u>
Liners Used			

Open Flow \_\_\_\_\_ /10ths Water in \_\_\_\_\_ Inch  
\_\_\_\_\_ /10ths Merc. in \_\_\_\_\_ Inch  
Volume \_\_\_\_\_ Cu. Ft.  
Rock Pressure \_\_\_\_\_ lbs. \_\_\_\_\_ hrs.  
Oil \_\_\_\_\_ bbls., 1st 24 hrs.

Attach copy of cementing record.  
CASING CEMENTED 4 1/2 SIZE 460 No. Ft. 2-21-66 Date  
Amount of cement used (bags) 80  
Name of Service Co. HALLIBURTON  
COAL WAS ENCOUNTERED AT NO FEET \_\_\_\_\_ INCHES  
\_\_\_\_\_ FEET \_\_\_\_\_ INCHES \_\_\_\_\_ FEET \_\_\_\_\_ INCHES  
\_\_\_\_\_ FEET \_\_\_\_\_ INCHES \_\_\_\_\_ FEET \_\_\_\_\_ INCHES

WELL ACIDIZED (DETAILS) \_\_\_\_\_  
WELL FRACTURED (DETAILS) 700 Bbls Water, 500 gallons Acid, 28,000# Sand

RESULT AFTER TREATMENT (Initial open Flow or bbls.) 40,800 CED - show  
ROCK PRESSURE AFTER TREATMENT 40# HOURS 38  
Fresh Water 65 Feet \_\_\_\_\_ Salt Water None Feet \_\_\_\_\_  
Producing Sand Big Injun Depth \_\_\_\_\_

Formation	Color	Hard or Soft	Top	Bottom	Oil, Gas or Water	Depth	Remarks
Clay			0	15			
Sand			15	25			
Shale			25	35			
Red Rock			35	50			
Slate & Shells			50	75	Water	65	Hole Full
Red Rock			75	115			
Sand			120	155			
Lime			155	192			
Slate			192	200			
Red Rock			200	205			
Lime			205	215			
Shale			215	280			
Lime			280	300			
Slate & Shells			300	325			
Sandy Shale			325	345			
Sandy Lime			345	365			
Slate & Shells			365	390			
Lime			390	435			
Red Rock			435	450			
Lime			450	463			
Red Rock & Shells			463	505			
Red Rock			505	515			
Lime			515	540			
Shale & Shells			540	600			
Lime			600	709			
Slate & Shells			709	740			
Sand			740	750			
Lime			750	780			

Formation	Color	Hard or Soft	Top //	Bottom	Oil, Gas or Water	Depth Found	Remarks
Slate			780	785			
Lime & Shells			785	800			
Shells			800	815			
<del>Sand</del> Dunkard Sand			815	905			
Shale			905	910			
Sandy Lime			910	936			
Slate & Lime Shells			936	970			
Sand			970	1028			
Slate & Shells			1028	1148			
Sand <sup>4</sup>			1148	1175			
Slate & Lime			1175	1200			
Slate			1200	1250			
Gritty Lime			1250	1340			
Sand			1340	1445			
Shale			1445	<del>1445</del> 1508			
Maxon Sand			1508	1518			
Sandy Shale			1518	1578			
Little Lime			1578	1622			
Pencil Case			1622	1632			
Big Lime			1632	1696			
Big Injun			1696	1772	Gas	1700-1726	
Slate			1772	1803			
Total Depth			1803				

Date \_\_\_\_\_, 19\_\_

APPROVED \_\_\_\_\_, Owner

By \_\_\_\_\_

(Title)