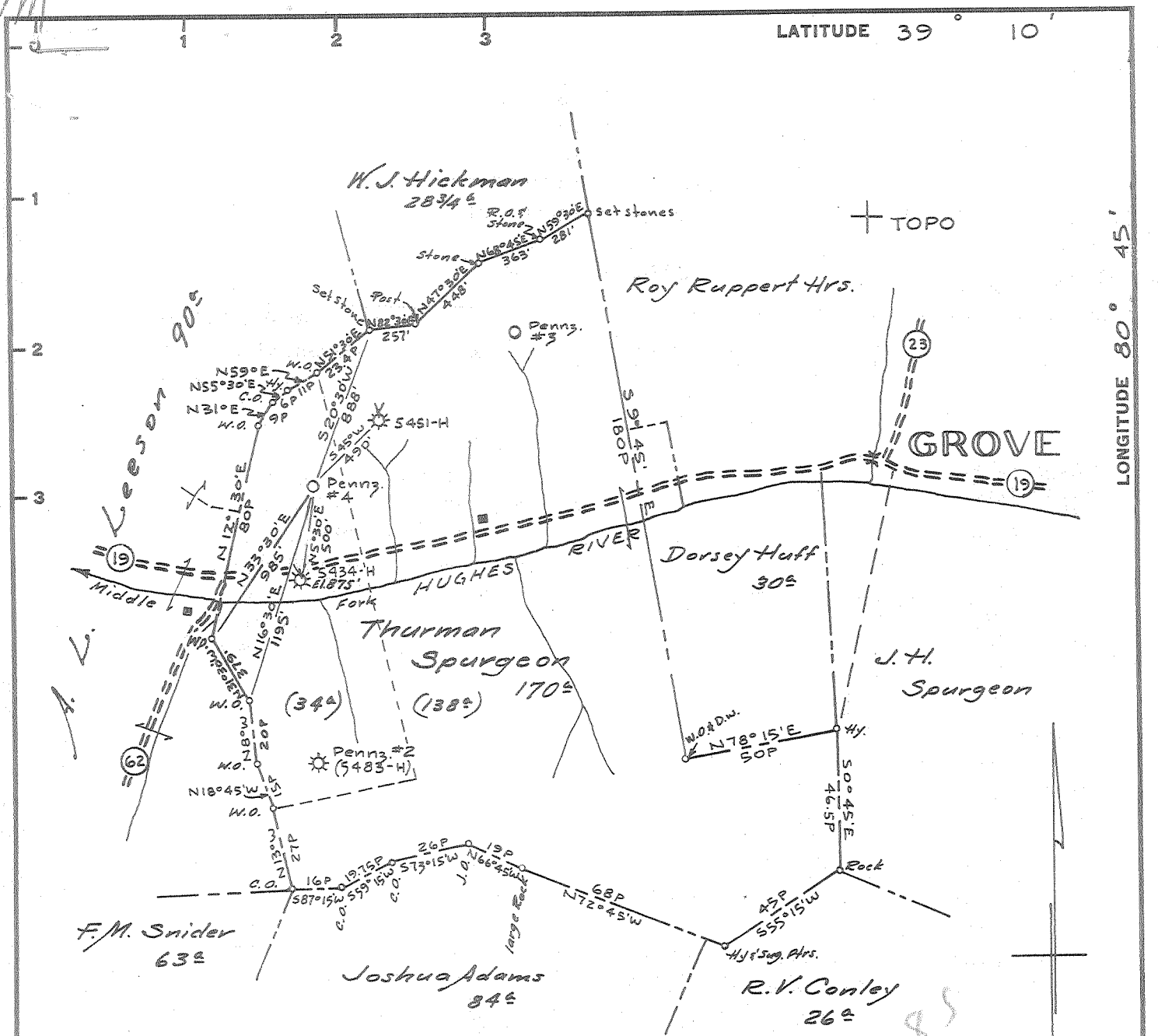


LATITUDE 39° 10'

LONGITUDE 80° 45'



Surface: Mrs. Thurman Spurgeon
Auburn, W. Va.

Coal: No Commercial Coal.

Minimum Error of Closure 1' in 200'

Source of Elevation Taken from H. N. G. Co. Well #5434-H (Abd. Permit
Dodd. 1052-A) Elev. 875' ground.

- Fracture.....
- New Location.....
- Drill Deeper.....
- Abandonment.....

I, the undersigned, hereby certify that this map is correct to the best of my knowledge and belief and shows all the information required by paragraph 6 of the rules and regulations of the oil and gas section of the mining laws of West Virginia.

Signed: A.C. Hilbert

Map No. 647

Squares: N S21 E W9-10

Company PENNZOIL COMPANY
 Address P. O. BOX 1588, PARKERSBURG, W. VA.
 Farm Thurman Spurgeon
 Tract _____ Acres 170[±] Lease No. 71767
 Well (Farm) No. 4 Serial No. _____
 Elevation (Spirit Level) 1060.72' ground
 Quadrangle HOLBROOK FC
 County DODDRIDGE District COVE
 Engineer A.C. Hilbert
 Engineer's Registration No. 2534
 File No. 1416 Drawing No. _____
 Date July 28, 1965 Scale 1" = 800'

STATE OF WEST VIRGINIA
 DEPARTMENT OF MINES
 OIL AND GAS DIVISION
 CHARLESTON

WELL LOCATION MAP

FILE NO. Dod 1282

+ Denotes location of well on United States Topographic Maps, scale 1 to 62,500, latitude and longitude lines being represented by border lines as shown.

- Denotes one inch spaces on border line of original tracing.

6-6-133



STATE OF WEST VIRGINIA
DEPARTMENT OF MINES
OIL AND GAS DIVISION

Rotary
Spudder
Cable Tools
Storage
Oil or Gas Well *Oil*

10-27-65
100

Quadrangle HOLBROOK
Permit No. DOD-1282

WELL RECORD

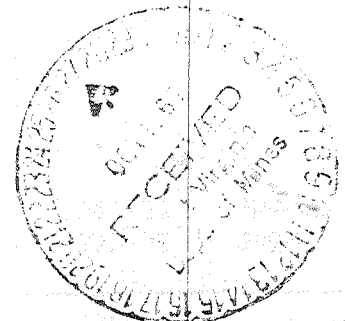
Company PENNZOIL COMPANY
Address P. O. Box 1588, Parkersburg, W. Va.
Farm Thurman Spurgeon Acres 170
Location (waters) _____
Well No. 4 Elev. 1060.72'
District Cove County Doddridge
The surface of tract is owned in fee by Mrs. Thurman Spurgeon
Address Auburn, W. Va.
Mineral rights are owned by LaVaughn Wolverton, et al
Address West Union, W. Va.
Drilling commenced August 22, 1965
Drilling completed August 31, 1965
Date Shot - From To _____
With _____
Open Flow /10ths Water in _____ Inch
/10ths Merc. in _____ Inch
Volume Show Cu. Ft.
Rock Pressure _____ lbs. _____ hrs.
Oil Show bbls., 1st 24 hrs.
WELL ACIDIZED -

Casing and Tubing	Used in Drilling	Left in Well	Packers
Size			
16			
13			
10			
8 1/4" 8-5/8"	411.8'	411.8'	Kind of Packer Steel Shoe Float Collar Guide Shoe
6 5/8" 5-1/2"	2061.2'	2061.2'	Size of 8-5/8" 5-1/2"
5 3/16" 2-3/8"	2008.5'	2008.5'	Depth set 4 1/2" 2018' 2032'
3			Perf. top 1980.5 Perf. bottom 1986
2			Perf. top _____ Perf. bottom _____
Liners Used			

CASING CEMENTED 8-5/8" SIZE 417' No. Ft. 8-24-65
5-1/2" 2032' 9-1-65
COAL WAS ENCOUNTERED AT - / FEET _____ INCH
FEET _____ INCHES FEET _____ INCH
FEET _____ INCHES FEET _____ INCH

WELL FRACTURED September 4, 1965 Used: 900 Bbls. Water - 44,000# Sand - 45 Gals. Morflor - 15 Gals. Howco Suds - 700 Gal. Mud Acid - 400# WAK-8 - 1 Gal. Inhibitor
RESULT AFTER TREATMENT Gas: 50 Mcf. Oil: 200 Bbls./Day
ROCK PRESSURE AFTER TREATMENT 320#
Fresh Water _____ Feet Salt Water _____ Feet

Formation	Color	Hard or Soft	Top	Bottom	Oil, Gas or Water	Depth	Remarks
Silts & Shale			0	90			
Sand			90	115			
Silts			115	155			
Sand			155	170			
Shale			170	185			
Silts & Shale			185	308			
Sand			308	384			
Shale			384	460			
Sand & Slits			460	486			
Silts & Shale			486	605			
Sand			605	618			
Silts & Shale			618	720			
Sand			720	728			
Silts & Shale			728	890			
Sand			890	903			
Silts & Shale			903	968			
Sand			968	975			
Shale			975	1170			
Sand			1170	1270			
Shale			1270	1360			
Sand			1360	1382			
Silts & Shale			1382	1440			
Salt Sand			1440	1620			
Shale			1620	1655			
Salt Sand			1655	1706			
Grey Shale			1706	1788			
Little Lime			1788	1814			
Blue Monday & Sandy Ln.			1814	1826			
Pencil Cave			1826	1834			





Engineering Department
 A. C. Hilbert (Title) Engineer

By *A. C. Hilbert*

APPROVED

PENNZOIL COMPANY

Date

October 26, 19 65

Formation	Color	Hard or Soft	Top	Bottom	Oil, Gas or Water	Depth Found	Remarks
Big Lime			1834	1896	011	1850-58	Show
Big Injun			1896	1988	011	1846-52	Show
Grey Shale w/Silts.			1988	2032			
TOTAL DEPTH							