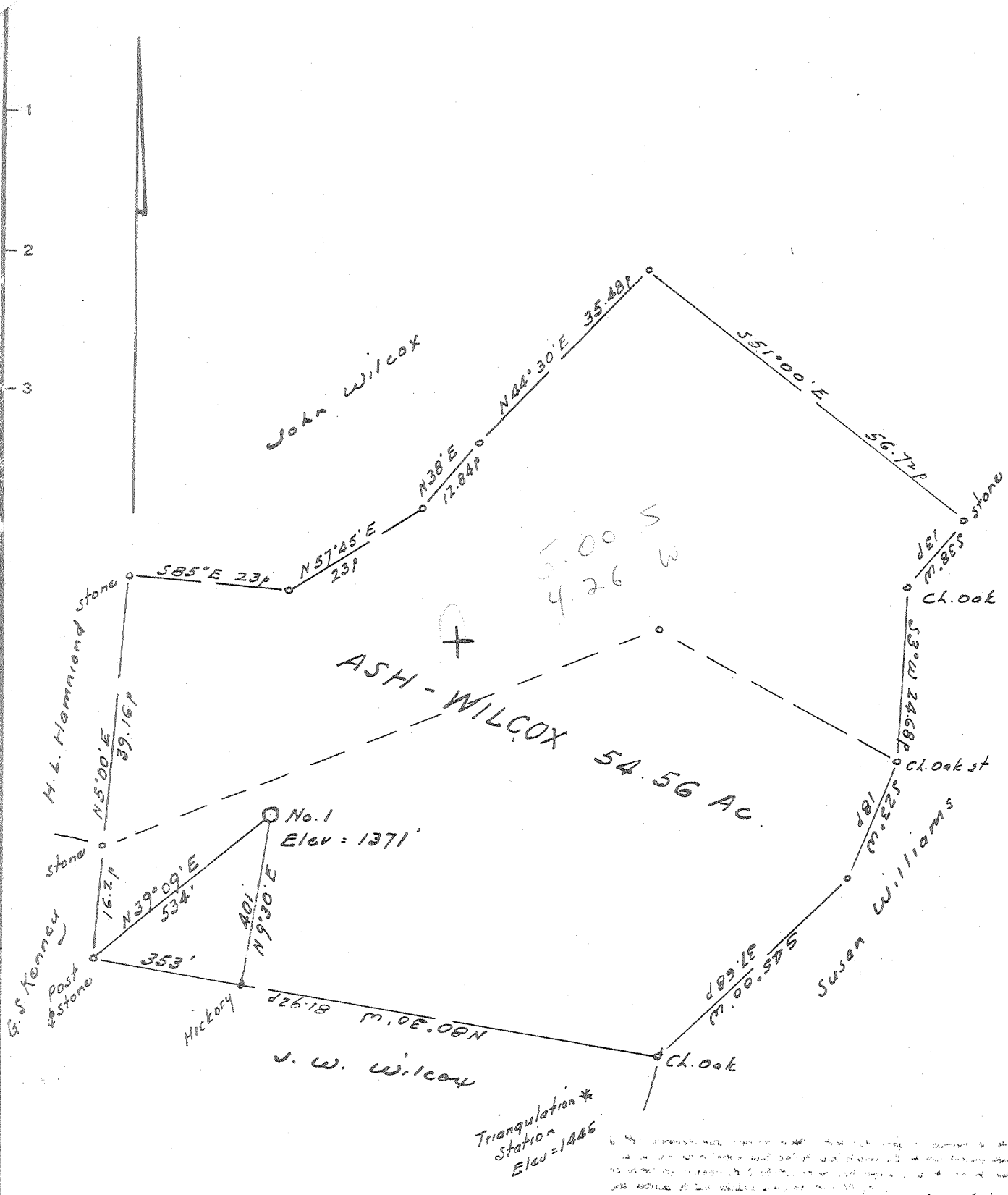


LATITUDE 39 ° 25 '

LONGITUDE 80 ° 40 '



- New Location
- Drill Deeper
- Abandonment

Source of elev. :- Triangulation Sta. = 1446'
 Error in Closure :- Less than 1" in 200

W. S. ...

Company Prior Oil Company
 Address 224 Washington Bud., Balpro, Ohio
 Farm Ash - Wilcox
 Tract _____ Acres 54.56 Lease No. _____
 Well (Farm) No. One Serial No. _____
 Elevation (Spirit Level) 1371
 Quadrangle Centerpoint - WC
 County Doddridge District Grant
 Engineer W. S. ...
 Engineer's Registration No. 1227
 File No. _____ Drawing No. _____
June 30, 1965 Scale 1" = 200' = 330'

STATE OF WEST VIRGINIA
 DEPARTMENT OF MINES
 OIL AND GAS DIVISION
 CHARLESTON

WELL LOCATION MAP
 FILE NO. Dod - 1278

+ Denotes location of well on United States Topographic Maps, scale 1 to 62,500, latitude and longitude lines being represented by border lines as shown.
 - Denotes one inch spaces on border line of original tracing.



STATE OF WEST VIRGINIA
DEPARTMENT OF MINES
OIL AND GAS DIVISION 3

Rotary
Spudder
Cable Tools
Storage

*Miss Phillips
for printing
3-7-66
102*

Quadrangle CENTERPOINT

WELL RECORD

Permit No. DOD-1278

Oil or Gas Well Oil
(KIND)

Company PRIOR OIL COMPANY
Address 224 WASHINGTON BLVD., BELPRE, OHIO
Farm ASH-WILCOX Acres 54.56
Location (waters) _____
Well No. ONE Elev. 1371
District GRANT County DODDRIDGE
The surface of tract is owned in fee by BESSIE WHEELER, ET AL
Address FINLEYVILLE, PA. AL
Mineral rights are owned by BESSIE WHEELER, ET AL
Address FINLEYVILLE, PA.

| Casing and Tubing | Used in Drilling | Left in Well | Packers |
|-------------------|------------------|--------------|----------------|
| Size | | | Kind of Packer |
| 16 | | | |
| 13 | | | |
| 10 | 87 | 87 | Size of |
| 8 1/4 | 729 | 729 | |
| 7 | 1484 | 1484 | Depth set |
| 5 3/16 | | | |
| 4 1/2 | 2431 | | Perf. top |
| 2 | | | Perf. bottom |
| Liners Used | | | Perf. top |
| | | | Perf. bottom |

Drilling commenced 11/20/65
Drilling completed 1/19/66
Date Shot _____ From _____ To _____
With _____
Open Flow _____ /10ths Water in _____ Inch
_____ /10ths Merc. in _____ Inch
Volume _____ Cu. Ft.
Rock Pressure _____ lbs. _____ hrs.

CASING CEMENTED 4 1/2 SIZE 2431 No. Ft. 1/21/66 Date

Oil _____ bbls., 1st 24 hrs.
WELL ACIDIZED 750 Gal. acid

COAL WAS ENCOUNTERED AT _____ FEET _____ INCHES
NO COAL
_____ FEET _____ INCHES _____ FEET _____ INCHES
_____ FEET _____ INCHES _____ FEET _____ INCHES

WELL FRACTURED 15,000# 20/40 sand

RESULT AFTER TREATMENT 35 @ Bbls oil = Big Injun
ROCK PRESSURE AFTER TREATMENT 425#

Fresh Water _____ Feet Salt Water _____ Feet

| Formation | Color | Hard or Soft | Top | Bottom | Oil, Gas or Water | Depth | Remarks |
|----------------|-------|--------------|-----|--------|-------------------|-------|---------|
| Clay | | | 0 | 15 | | | |
| Lime | | | 15 | 24 | | | |
| Red rock | | | 24 | 35 | | | |
| Pink rock | | | 34 | 46 | | | |
| Lime | | | 46 | 64 | | | |
| Red rock | | | 64 | 83 | | | |
| Lime | | | 83 | 95 | | | |
| Red rock | | | 95 | 110 | | | |
| Pink rock | | | 110 | 118 | | | |
| Slate & shells | | | 118 | 140 | | | |
| Lime | | | 140 | 180 | | | |
| Red rock | | | 180 | 185 | | | |
| Lime | | | 185 | 210 | | | |
| Red rock | | | 210 | 250 | | | |
| Lime | | | 250 | 285 | | | |
| Slate | | | 285 | 310 | | | |
| Lime | | | 310 | 330 | | | |
| Red rock | | | 330 | 340 | | | |
| Lime | | | 340 | 360 | | | |
| Red rock | | | 360 | 440 | | | |
| Lime | | | 440 | 549 | | | |
| Red rock | | | 549 | 580 | | | |
| Lime | | | 580 | 610 | | | |
| Red rock | | | 610 | 640 | | | |
| Slate | | | 640 | 665 | | | |
| Lime | | | 665 | 735 | | | |
| Black slate | | | 735 | 760 | | | |
| Lime | | | 760 | 880 | | | |
| Slate | | | 880 | 935 | | | |
| Slate | | | 935 | 1020 | | | |



*7300
1370
2930*

| Formation | Color | Hard or Soft | Top | Bottom | Oil, Gas or Water | Depth Found | Remarks |
|----------------|-------|--------------|------|--------|-------------------|-------------|---------|
| Lime | | | 1020 | 1045 | | | |
| Slate & shells | | | 1045 | 1080 | | | |
| Lime | | | 1080 | 1125 | | | |
| Red rock | | | 1125 | 1155 | | | |
| Lime | | | 1155 | 1205 | | | |
| Slate & shells | | | 1205 | 1210 | | | |
| Pink rock | | | 1210 | 1225 | | | |
| Lime | | | 1225 | 1312 | | | |
| Sand | | | 1312 | 1340 | | | |
| Slate & shells | | | 1340 | 1355 | | | |
| Red rock | | | 1355 | 1360 | | | |
| Lime | | | 1360 | 1380 | | | |
| Slate & shells | | | 1380 | 1410 | | | |
| Red rock | | | 1410 | 1460 | | | |
| Lime | | | 1460 | 1485 | | | |
| Slate & shells | | | 1485 | 1520 | | | |
| Black lime | | | 1520 | 1585 | | | |
| Slate & shells | | | 1585 | 1645 | | | |
| Lime | | | 1645 | 1670 | | | |
| Slate & shells | | | 1670 | 1687 | | | |
| Lime | | | 1687 | 1718 | | | |
| Slate | | | 1718 | 1725 | | | |
| Lime | | | 1725 | 1740 | | | |
| Sand | | | 1740 | 1760 | | | |
| Slate | | | 1760 | 1770 | | | |
| Lime | | | 1770 | 1820 | | | |
| Sand | | | 1830 | 1905 | | | |
| Slate | | | 1905 | 1910 | | | |
| Lime | | | 1910 | 1960 | | | |
| Black slate | | | 1960 | 2020 | | | |
| Sand | | | 2020 | 2079 | | | |
| Slate | | | 2079 | 2085 | | | |
| Sand | | | 2085 | 2120 | | | |
| Lime | | | 2120 | 2161 | | | |
| Sand | | | 2161 | 2218 | | | |
| Lime | | 32 | 2218 | 2230 | | | |
| Red rock | | | 2230 | 2238 | | | |
| Slate | | | 2238 | 2253 | | | |
| Lime | | | 2253 | 2283 | | | |
| Slate | | | 2283 | 2286 | | | |
| Lime | | | 2286 | 2356 | | | |
| Sand | | | 2356 | 2391 | | | |
| Shale | | | 2391 | 2452 | | | |

Date FEBRUARY 25, 1966, 19__

APPROVED PRIOR OIL COMPANY, Owner

By Gene M. Carter
(Title)