

I, the undersigned, hereby certify that this map is correct to the best of my knowledge and belief and shows all of the information required by paragraph 6 of the rules and regulations of the oil and gas section of the mining laws of West Virginia.

*W. S. [Signature]*  
R. P. E. No. 122.

Elevation reference:- Well No. 1: 1037'

New Location   
 Drill Deeper   
 Abandonment  *issued 4/4/74*

Error in Closure:- Less than 1' in 200'

Company Salem Pipe Supply, Inc.  
 Address Salem, W. Va. 26086  
 Farm C. A. Davis  
 Tract \_\_\_\_\_ Acres 8.3 Lease No. \_\_\_\_\_  
 Well (Farm) No. Duo Serial No. \_\_\_\_\_  
 Elevation (Spirit Level) 1197  
 Quadrangle Center point  
 County Doddridge District Grant  
 Engineer W. S. [Signature]  
 Engineer's Registration No. 1227  
 File No. \_\_\_\_\_ Drawing No. \_\_\_\_\_  
 Date Dec 11, 1964 Scale 1" = 495'

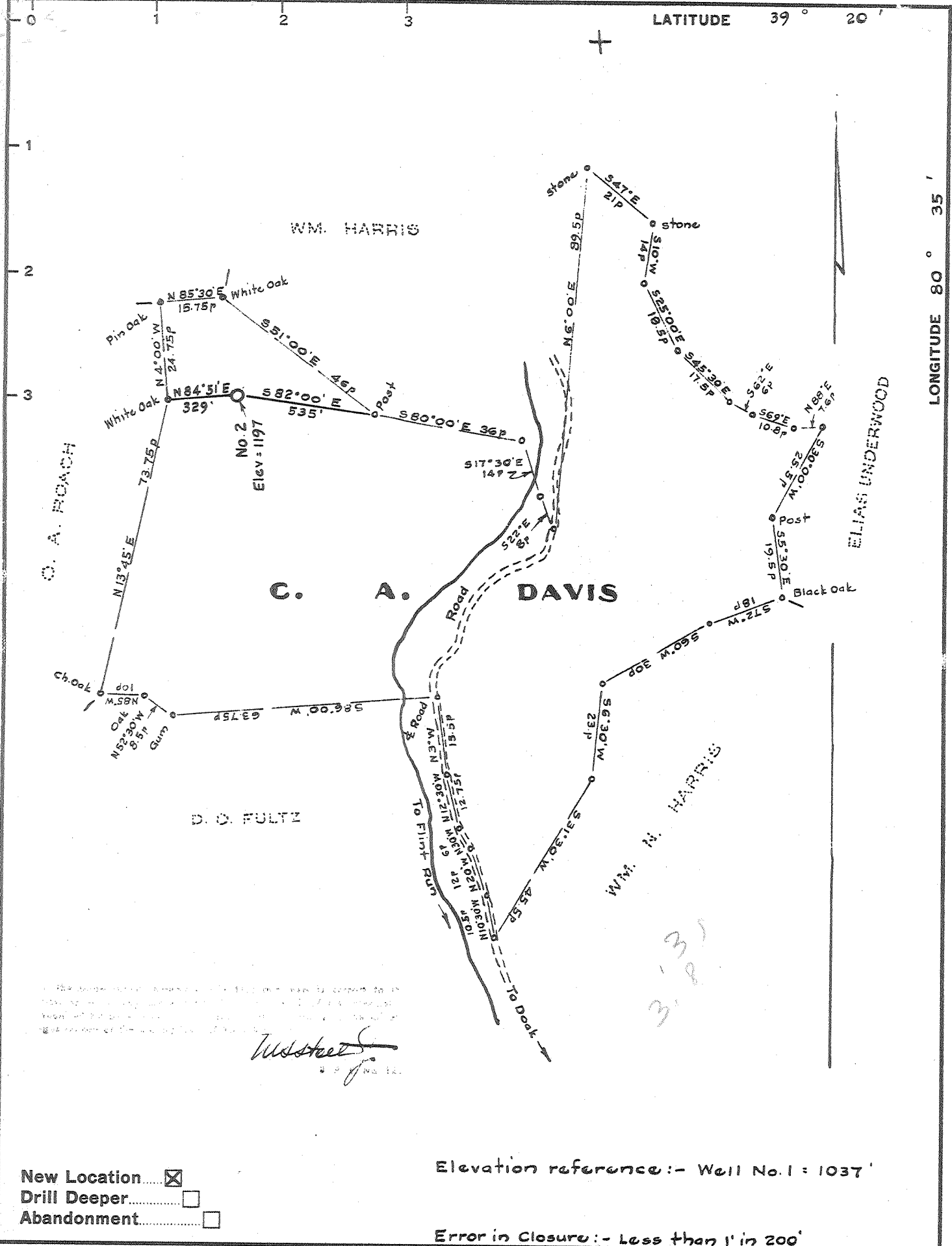
STATE OF WEST VIRGINIA  
 DEPARTMENT OF MINES  
 OIL AND GAS DIVISION  
 CHARLESTON

WELL LOCATION MAP  
 FILE NO. Doo-1206-P

+ Denotes location of well on United States Topographic Maps, scale 1 to 62,500, latitude and longitude lines being represented by border lines as shown.

- Denotes one inch spaces on border line of original tracing.

*47 017*



*W. S. Steeple*  
No. 1227

- New Location
- Drill Deeper
- Abandonment

Elevation reference :- Well No. 1 = 1037'

Error in Closure :- Less than 1' in 200'

Company Prior Oil Company  
 Address 224 Washington Blvd. Belpro, Ohio  
 Farm C. A. Davis  
 Tract \_\_\_\_\_ Acres 83 Lease No. \_\_\_\_\_  
 Well (Farm) No. Two Serial No. \_\_\_\_\_  
 Elevation (Spirit Level) 1197  
 Quadrangle Centerpoint - 5C  
 County Doddridge District Grant  
 Engineer W. S. Steeple  
 Engineer's Registration No. 1227  
 File No. \_\_\_\_\_ Drawing No. \_\_\_\_\_  
 Date Dec 11, 1964 Scale 1" = 495'

STATE OF WEST VIRGINIA  
 DEPARTMENT OF MINES  
 OIL AND GAS DIVISION  
 CHARLESTON

**WELL LOCATION MAP**  
 FILE NO. D00-1206

+ Denotes location of well on United States Topographic Maps, scale 1 to 62,500, latitude and longitude lines being represented by border lines as shown.

- Denotes one inch spaces on border line of original tracing.



STATE OF WEST VIRGINIA  
DEPARTMENT OF MINES  
OIL AND GAS DIVISION

Rotary   
Spudder   
Cable Tools   
Storage

Quadrangle CENTERPOINT

WELL RECORD

Permit No. DOD-1206

Oil or Gas Well GAS  
(KIND)

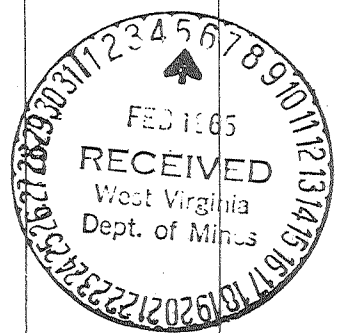
Company PRIOR OIL COMPANY  
Address 224 WASHINGTON BLVD., BELPRE, OHIO  
Farm C. A. DAVIS Acres 83  
Location (waters) BIG FLINT  
Well No. TWO Elev. 1197  
District GRANT County DODDRIDGE  
The surface of tract is owned in fee by ORVA DAVIS, ET AL  
Address SALEM, W. VA.  
Mineral rights are owned by ORVA DAVIS, ET AL  
Address SALEM, W. VA.  
Drilling commenced 12/28/64  
Drilling completed 1/11/65  
Date Shot \_\_\_\_\_ From \_\_\_\_\_ To \_\_\_\_\_  
With \_\_\_\_\_  
Open Flow \_\_\_\_\_ /10ths Water in \_\_\_\_\_ Inch  
\_\_\_\_\_ /10ths Merc. in \_\_\_\_\_ Inch  
Volume \_\_\_\_\_ Cu. Ft.  
Rock Pressure \_\_\_\_\_ lbs. \_\_\_\_\_ hrs.  
Oil \_\_\_\_\_ bbls., 1st 24 hrs.  
WELL ACIDIZED 250 GAL.  
WELL FRACTURED 40,000# - 20/40 ROTARY - WELL DRILLED WITH CIRCULATING GEL AND MUD.

Casing and Tubing	Used in Drilling	Left in Well	Packers
Size			Kind of Packer
16			
13			
10			Size of
8 1/4	22	22	Depth set
6 5/8			
5 3/16			Perf. top <u>2263</u>
4 1/2	2243	2243	Perf. bottom <u>2264</u>
2			Perf. top <u>2206</u>
Liners Used			Perf. bottom <u>2207</u>

CASING CEMENTED 4 1/2 SIZE 2243 No. Ft. 1/11/65 Date  
100 lbs. cement - Drwell  
COAL WAS ENCOUNTERED AT NO COAL FEET \_\_\_\_\_ INCHES  
\_\_\_\_\_ FEET \_\_\_\_\_ INCHES FEET \_\_\_\_\_ INCHES  
\_\_\_\_\_ FEET \_\_\_\_\_ INCHES FEET \_\_\_\_\_ INCHES

RESULT AFTER TREATMENT 1,500 MCF  
ROCK PRESSURE AFTER TREATMENT 390#  
Fresh Water NONE RECORDED Feet \_\_\_\_\_ Salt Water NONE RECORDED Feet \_\_\_\_\_

Formation	Color	Hard or Soft	Top	Bottom	Oil, Gas or Water	Depth	Remarks
Surface			0	60			
Sand			60	110			
Sandy shale			110	190			
Shale			190	240			
Sand			240	265			
Sandy shale			265	375			
Shale			375	460			
Red rock			460	520			
Lime			520	615			
Lime & shale			615	640			
Red shale			640	660			
Shale & sand			660	865			
Sand			865	985			
Sand & shale			985	1345			
Sand			1345	1570			
Sand & shale			1570	1650			
Sand			1650	1750			
Sand & shale			1750	1775			
Sand			1775	1800			
Sand & shale			1800	1905			
Sand			1905	1950			
Sand & shale			1950	1970			
Sand			1970	2000			
Lime & shale			2000	2020			
Little lime			2020	2030			
Pencil cave			2040	2055			
Big lime			2055	2105			
Lime & shale			2105	2115			
Shale			2115	2190			
Sand			2190	2240			



Shale 2240 (over) 265