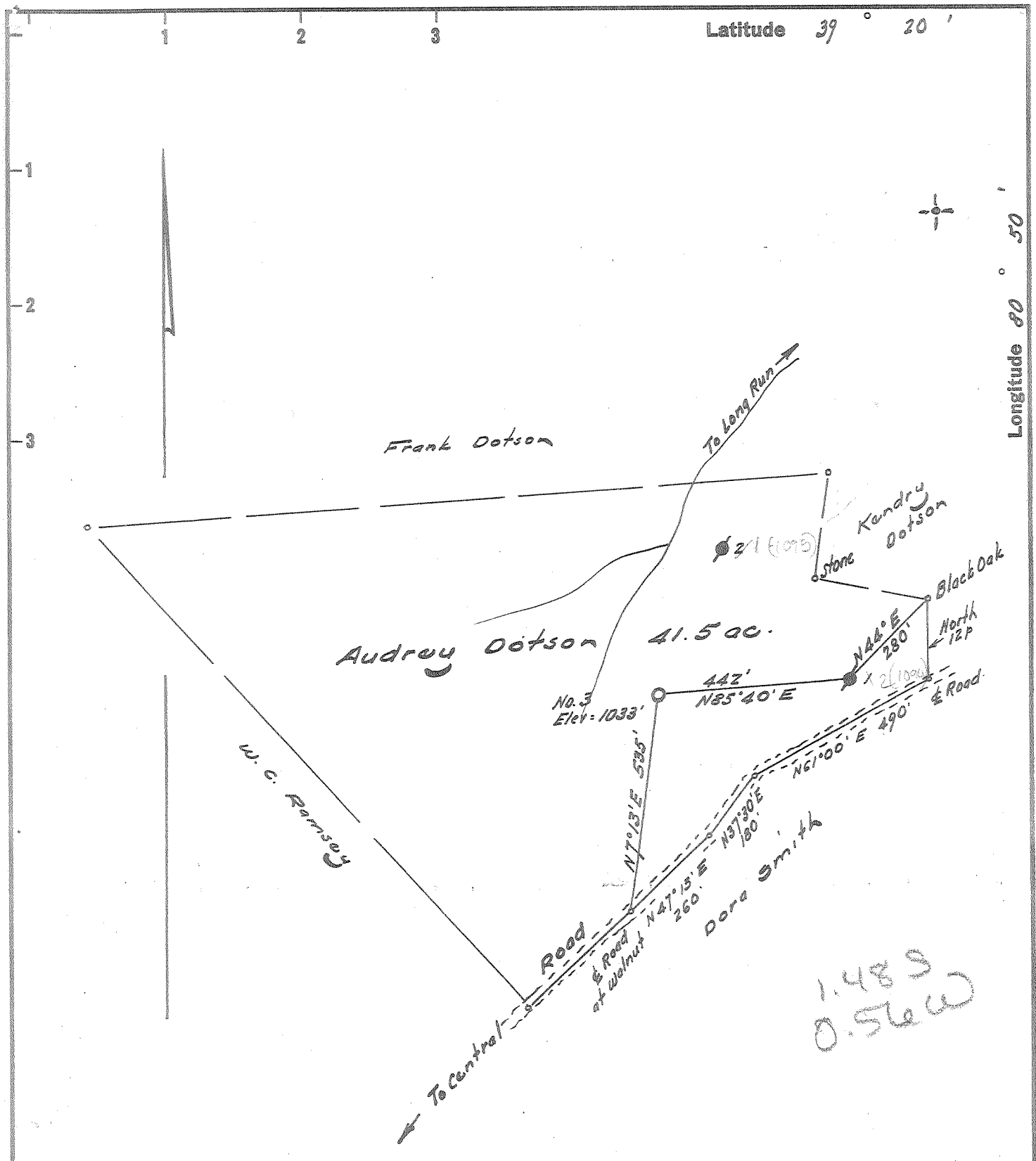


TCP

Latitude 39° 20'

Longitude 80° 50'



1.483  
0.56W

Elev. Mouth of Long Run = 740'

I, the undersigned, hereby certify that this map is correct to the best of my knowledge and belief and shows all of the information required by paragraph 6 of the rules and regulations of the oil and gas section of the mining laws of West Virginia.

*Walter J. [Signature]*  
R. P. E. No. 1227

New Location   
Drill Deeper   
Abandonment

Error in Closure: - Less than 1' in 200'

Company Prior Oil Company  
 Address 720 Union Trust Bldg., Parkersburg, W. Va.  
 Farm Audrey M. Dotson  
 Tract \_\_\_\_\_ Acres 41.5 Lease No. \_\_\_\_\_  
 Well (Farm) No. Three Serial No. \_\_\_\_\_  
 Elevation (Spirit Level) 1033  
 Quadrangle West Union - SC  
 County Doddridge District Central  
 Engineer Walter J. [Signature]  
 Engineer's Registration No. 1227  
 File No. \_\_\_\_\_ Drawing No. \_\_\_\_\_  
 Date April 25, 1964 Scale 1" = 200' = 330'

STATE OF WEST VIRGINIA  
DEPARTMENT OF MINES  
OIL AND GAS DIVISION  
CHARLESTON

WELL LOCATION MAP  
FILE NO. Dod-1124

+ Denotes location of well on United States Topographic Maps, scale 1 to 62,500, latitude and longitude lines being represented by border lines as shown.  
- Denotes one inch spaces on border line of original tracing.