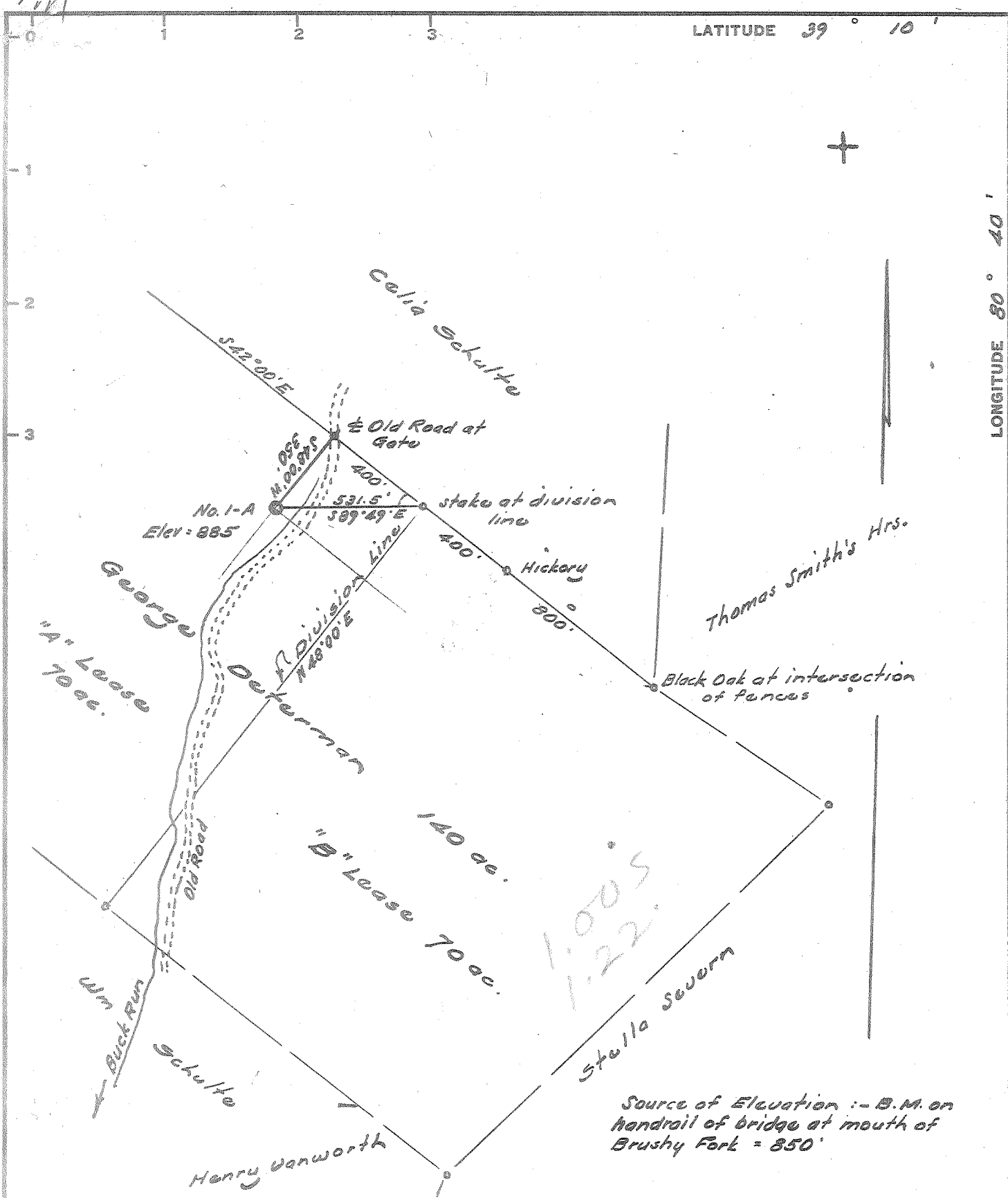


LATITUDE 39° 10'

LONGITUDE 80° 40'



I, the undersigned, hereby certify that this map is correct to the best of my knowledge and belief and shows all of the information required by paragraph 6 of the rules and regulations of the oil and gas section of the mining laws of West Virginia.

*Webb*  
R. P. E. No. 12

Error in closure :- Less than 1" in 500'

New Location.....  
 Drill Deeper.....  
 Abandonment.....

Company PETROLEUM PROMOTIONS  
 Address 2817 Clio Road, Flint, Michigan  
 Farm George Determan "A" Lease  
 Tract \_\_\_\_\_ Acres 70 Lease No. \_\_\_\_\_  
 Well (Farm) No. One Serial No. \_\_\_\_\_  
 Elevation (Spirit Level) 885  
 Quadrangle Vadis WC  
 County Doddridge District Cave  
 Engineer *Webb*  
 Engineer's Registration No. 1227  
 File No. \_\_\_\_\_ Drawing No. \_\_\_\_\_  
 Date March 5, 1964 Scale 1" = 30 p = 495'

STATE OF WEST VIRGINIA  
 DEPARTMENT OF MINES  
 OIL AND GAS DIVISION  
 CHARLESTON

WELL LOCATION MAP  
 FILE NO. Dod-1103

+ Denotes location of well on United States Topographic Maps, scale 1 to 62,500, latitude and longitude lines being represented by border lines as shown.  
 - Denotes one inch spaces on border line of original tracing.

56 307



STATE OF WEST VIRGINIA  
DEPARTMENT OF MINES  
OIL AND GAS DIVISION

Rotary   
Spudder   
Cable Tools   
Storage

Quadrangle Vadis

Permit No. DOD-1103

WELL RECORD

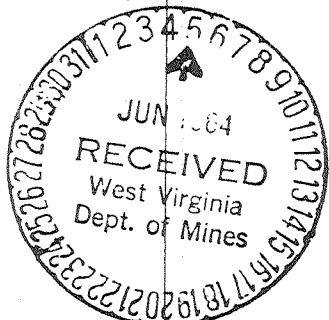
Oil or Gas Well Oil & Gas  
(KIND)

Company Petroleum Promotions, Inc.  
Address Box 105, Weston, W. Va..  
Operator George Determan Acres 70  
Location (waters) Brushy Fork  
Well No. 1A Elev. 885'  
District Cove County Doddridge  
The surface of tract is owned in fee by Beterice Determan  
Address New Milton, W. Va.  
General rights are owned by Same  
Address \_\_\_\_\_  
Drilling commenced March 16, 1964  
Drilling completed April 16, 1964  
Date Shot \_\_\_\_\_ From \_\_\_\_\_ To \_\_\_\_\_  
Flow \_\_\_\_\_ /10ths Water in \_\_\_\_\_ Inch  
\_\_\_\_\_ /10ths Merc. in \_\_\_\_\_ Inch  
Volume No Test Cu. Ft.  
Back Pressure \_\_\_\_\_ lbs. hrs.  
\_\_\_\_\_ bbls., 1st 24 hrs.  
WELL ACIDIZED \_\_\_\_\_

Casing and Tubing	Used in Drilling	Left in Well	Packers
Size			Kind of Packer
16			
13	19'	19'	
10	223'	223'	Gelled
8 1/4	1179'	Pulled	
6 5/8			Depth set
5 3/16			
3 4 1/2	2183'	Cemented	Perf. top
2			Perf. bottom
Liners Used			Perf. top
			Perf. bottom

CASING CEMENTED 4 1/2 SIZE 2183 No. 4/8/64 Date  
50sks. Cement 10sks Gel. Lawson  
COAL WAS ENCOUNTERED AT 185 FEET 24 INCHES  
\_\_\_\_\_ FEET \_\_\_\_\_ INCHES FEET \_\_\_\_\_ INCHES  
\_\_\_\_\_ FEET \_\_\_\_\_ INCHES FEET \_\_\_\_\_ INCHES  
WELL FRACTURED 24,600 gals. Treated Water, 27,000 # Sand, 200 gals. Acid.  
RESULT AFTER TREATMENT 5bbls. Oil, 150MOF Gas  
BACK PRESSURE AFTER TREATMENT 880# 24 hrs.  
Fresh Water \_\_\_\_\_ Feet Salt Water \_\_\_\_\_ Feet

Formation	Color	Hard or Soft	Top	Bottom	Oil, Gas or Water	Depth	Remarks
Clay			0	13			
Sand			13	24			
Red Rock			24	104	Water	80'	
Shale			104	110			
Sand			110	122			
Red Rock			122	130			
Shale			130	185			
Coal			185	187			
Shale			187	198			
Sand			198	218			
Sand & Lime			218	230			
Red Rock & Lime			230	258			
Lime			258	277			
Slate			277	290			
Red Rock			290	322			
Sand			322	365			
Red Rock & Shale			365	385			
Lime & Slate			385	408			
Red Rock			408	415			
Shale			415	445			
Red Rock			445	466			
Sand			466	482			
Slate			482	490			
Red Rock & Shale			490	510			
Lime			510	515			
Red Rock			515	535			
Lime, Sandy			535	554			
Sand			554	584			
Slate & Shells			584	592			
Sand			592	615			



Formation	Color	Hard or Soft	Top $\delta$	Bottom	Oil, Gas or Water	Depth Found	Remarks
Slate & Lime			615	625			
Slate & Red Rock			625	635			
Sand			635	672			
Red Rock & Shale			672	711			
Sand & Shale			711	728			
Shale			728	745			
Sand			745	770			
Slate & Shells			770	775			
Sand			775	821	Water	810'	
Shale & Shells			821	840			
Red Rock & Shale			840	870			
Sand			870	890			
Red Rock & Shale			890	991			
Lime, Sandy			991	1002			
Red Rock & Shale			1002	1018			
Sand			1018	1032			
Red Rock & Slate			1032	1046			
Slate & Lime			1046	1080			
Shale & Red Rock			1080	1182			
Lime, Sandy			1182	1190			
Sand			1190	1241			
Sandy Slate			1241	1263			
Sand			1263	1305			
Slate			1305	1309			
Sand & Slate			1309	1550			
Sand			1550	1590	Water	1565'	
Sandy Slate			1590	1600			
Sand			1600	1615			
Slate			1615	1631			
Sand			1631	1650			
Sandy Slate			1650	1671			
Sand			1671	1681			
Slate			1681	1735			
Sand			1735	1764			
Slate			1764	1848			
Slate & Shells			1848	1947			
Sand			1947	1984			
Red Rock & Slate			1984	2072			
Slate & Lime			2072	2090			
Lime			2090	2110			
Sandy Lime			2110	2120			
Sand			2120	2153			
Lime			2153	2185			
Sandy Lime			2185	2213			
Sand & Lime			2213	2232	Gas	2227'	
Sand			2232	2254			
Sand & Lime			2254	2284			
Shale			2284	2288			
		TD	2288				

Date 6-7, 1924  
 APPROVED Jermy Mason, Owner  
 By Lept. (Title)