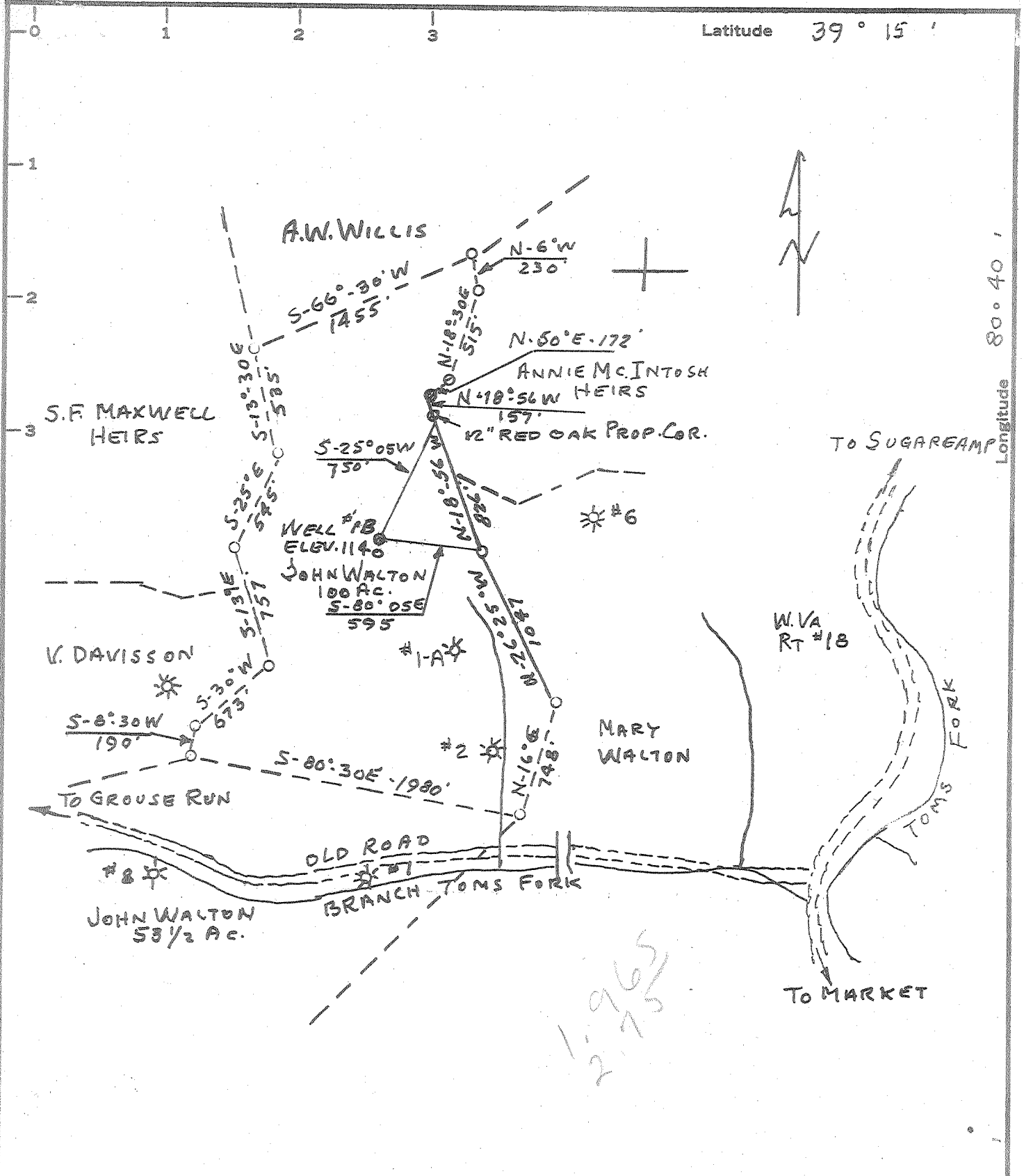


TCP



MINIMUM ERROR OF CLOSURE 1/2500  
 SOURCE OF ELEVATION B.M. TOMS FORK BELOW RANDOLPH SCHOOL  
ELEVATION 830

New Location   
 Drill Deeper   
 Abandonment

"I, THE UNDERSIGNED, HEREBY CERTIFY THAT THIS MAP IS CORRECT TO THE BEST OF MY KNOWLEDGE AND BELIEF AND SHOWS ALL THE INFORMATION REQUIRED BY PARAGRAPH 6 OF THE RULES AND REGULATIONS OF THE OIL AND GAS SECTION OF THE MINING LAWS OF WEST VIRGINIA."

Company PRIOR OIL COMPANY  
 Address UNION TRUST BLDG. PARKERSBURG W. VA.  
 Farm JOHN WALTON  
 Tract \_\_\_\_\_ Acres 100 Lease No. \_\_\_\_\_  
 Well (Farm) No. HB Serial No. \_\_\_\_\_  
 Elevation (Spirit Level) 1140  
 Quadrangle VADIS - NW  
 County DODDRIDGE District NEW MILTON  
 Engineer Gordon C. Ralsh  
 Engineer's Registration No. 4052  
 File No. \_\_\_\_\_ Drawing No. \_\_\_\_\_  
 Date 2-14-64 Scale 1" = 800'

STATE OF WEST VIRGINIA  
 DEPARTMENT OF MINES  
 OIL AND GAS DIVISION  
 CHARLESTON  
**WELL LOCATION MAP**  
 FILE NO. DOD-1102

+ Denotes location of well on United States Topographic Maps, scale 1 to 62,500, latitude and longitude lines being represented by border lines as shown.  
 — Denotes one inch spaces on border line of original tracing.

6-6 144



STATE OF WEST VIRGINIA  
DEPARTMENT OF MINES  
OIL AND GAS DIVISION

Rotary   
Spudder   
Cable Tools   
Storage

Quadrangle VADIS

WELL RECORD

Oil or Gas Well OIL  
(KIND)

Permit No. DOD-1102

Company PRIOR OIL COMPANY  
Address 720 UNION TRUST BLDG., PARKERSBURG, W. VA.  
Farm JOHN WALTON Acres 100  
Location (waters) TOMS FORK  
Well No. 1-B Elev. 1140  
District NEW MILTON County DODDRIDGE  
The surface of tract is owned in fee by JOHN WALTON  
Address WEST UNION, W. VA.  
Mineral rights are owned by JOHN WALTON  
Address WEST UNION, W. VA.  
Drilling commenced 3/15/64  
Drilling completed 3/30/64  
Date Shot \_\_\_\_\_ From \_\_\_\_\_ To \_\_\_\_\_  
With \_\_\_\_\_  
Open Flow \_\_\_\_\_ /10ths Water in \_\_\_\_\_ Inch  
\_\_\_\_\_ /10ths Merc. in \_\_\_\_\_ Inch  
Volume \_\_\_\_\_ Cu. Ft.  
Rock Pressure \_\_\_\_\_ lbs. \_\_\_\_\_ hrs.  
Oil \_\_\_\_\_ bbls., 1st 24 hrs.  
WELL ACIDIZED 250 GAL.  
WELL FRACTURED 20,000# 7-8-64

Casing and Tubing	Used in Drilling	Left in Well	Packers
Size			Kind of Packer
16			
13			Size of
10			
8 1/2	22	22	Depth set
6 3/4			
5 3/16			Perf. top <u>2084</u>
3			Perf. bottom <u>2096</u>
2			Perf. top _____
Liners Used			Perf. bottom _____

CASING CEMENTED 4 1/2 SIZE 2 1/2 No. Ft. 3/25/64 Date

50 sks. cement-Dowell

COAL WAS ENCOUNTERED AT No Coal FEET INCHES

FEET INCHES FEET INCHES

FEET INCHES FEET INCHES

ROTARY- CIRCULATING GEL & MUD

RESULT AFTER TREATMENT 10 BOPD

ROCK PRESSURE AFTER TREATMENT 460#

Fresh Water NONE RECORDED Feet \_\_\_\_\_ Salt Water NONE RECORDED Feet \_\_\_\_\_

Formation	Color	Hard or Soft	Top	Bottom	Oil, Gas or Water	Depth	Remarks
Surface			0	112			
Sandy shale			112	240			
Sand			240	328			
Sandy shale			328	470			
Sand & shale			470	569			
Shale			569	795			
Lime & sand			795	1010			
Sand			1010	1335			
Shale			1335	1715			
Sand			1715	1815			
Lime			1815	1860			
Shale			1860	1951			
Lime			1951	2009			
Shale			2009	2147			

