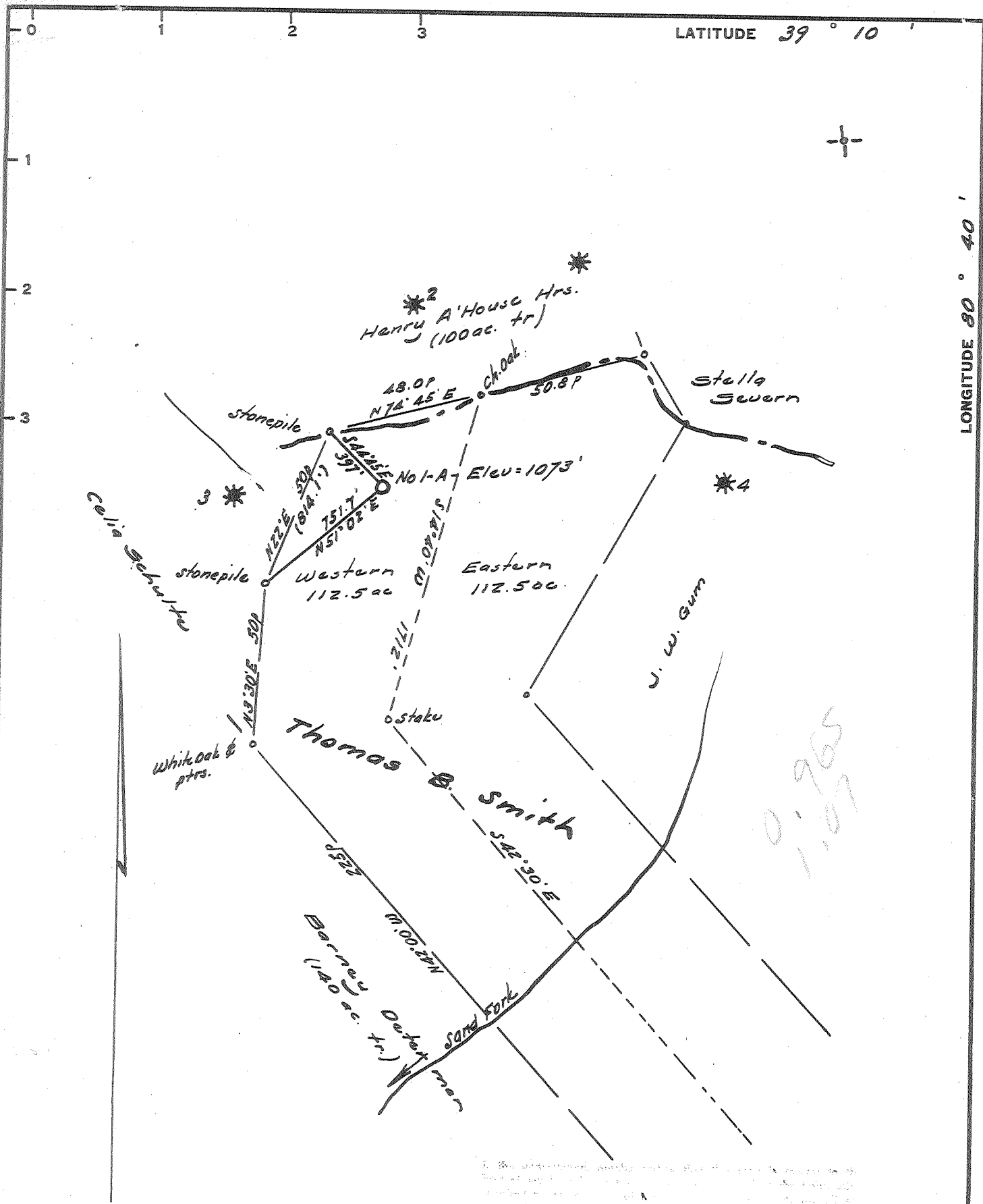


M

TOP



LATITUDE 39° 10'

LONGITUDE 80° 40'

- New Location.....
- Drill Deeper.....
- Abandonment.....

Error in Closure: - Less than 1' in 200'

*W. H. Hall*  
2.12.63

Company Petroleum Promotions  
 Address Box 105, Weston, W. Va.  
 Farm Thomas B. Smith (western 1/2)  
 Tract \_\_\_\_\_ Acres 112.5 Lease No. \_\_\_\_\_  
 Well (Farm) No. One A Serial No. \_\_\_\_\_  
 Elevation (Spirit Level) 1073'  
 Quadrangle Vadis - WC  
 County Doddridge District Couv  
 Engineer W. H. Hall  
 Engineer's Registration No. 1227  
 File No. \_\_\_\_\_ Drawing No. \_\_\_\_\_  
 Date Feb 7, 1963 Scale 1" = 400' = 660'

STATE OF WEST VIRGINIA  
 DEPARTMENT OF MINES  
 OIL AND GAS DIVISION  
 CHARLESTON

WELL LOCATION MAP  
 FILE NO. Dod-1098

+ Denotes location of well on United States Topographic Maps, scale 1 to 62,500, latitude and longitude lines being represented by border lines as shown.  
 - Denotes one inch spaces on border line of original tracing.

6-6-307



STATE OF WEST VIRGINIA  
DEPARTMENT OF MINES  
OIL AND GAS DIVISION 7

Rotary   
Spudder   
Cable Tools   
Storage

Quadrangle Vadis

WELL RECORD

Permit No. DOD - 1098

Oil or Gas Well Oil & Gas  
(KIND)

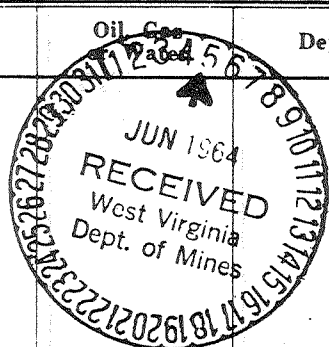
Company Petroleum Promotions, Inc.  
Address P.O. Box 105 - Weston, West Virginia  
Farm Thomas B. Smith Acres 112.5  
Location (waters) \_\_\_\_\_  
Well No. #1 Elev. 1073  
District Cove County Doddridge  
The surface of tract is owned in fee by O. C. Haught  
Address Salem, W. V.a  
Mineral rights are owned by Same  
Address \_\_\_\_\_  
Drilling commenced March 14, 1964  
Drilling completed April 22, 1964  
Date Shot \_\_\_\_\_ From \_\_\_\_\_ To \_\_\_\_\_  
With \_\_\_\_\_  
Open Flow \_\_\_\_\_ /10ths Water in \_\_\_\_\_ Inch  
\_\_\_\_\_ /10ths Merc. in \_\_\_\_\_ Inch  
Volume \_\_\_\_\_ Cu. Ft.  
Rock Pressure \_\_\_\_\_ lbs. \_\_\_\_\_ hrs.  
Oil \_\_\_\_\_ bbls., 1st 24 hrs.  
WELL ACIDIZED \_\_\_\_\_

Casing and Tubing	Used in Drilling	Left in Well	Packers
Size			
16			Kind of Packer
18	20'	20'	
10	215'	None	Size of
8 1/4"	1172'	None	
7"	1590'	None	Depth set
4 1/2"	2356'	None	2356'
3			Perf. top
2			Perf. bottom
Liners Used			Perf. top
			Perf. bottom

CASING CEMENTED 4 1/2" SIZE 2358' No. Ft. 4/22/64 Date  
Cemented with 50 sks. & 10 sks. Gel. Lawson Cementing Co.  
COAL WAS ENCOUNTERED AT \_\_\_\_\_ FEET \_\_\_\_\_ INCHES  
\_\_\_\_\_ FEET \_\_\_\_\_ INCHES  
\_\_\_\_\_ FEET \_\_\_\_\_ INCHES

WELL FRACTURED 32,300 gals. Treated Water, 30,000# Sand, 200 gals. Acid.  
May 25, 1964  
RESULT AFTER TREATMENT 10bbls. Oil and 150 MCF Gas.  
ROCK PRESSURE AFTER TREATMENT 800 lbs. 24 hrs.  
Fresh Water \_\_\_\_\_ Feet \_\_\_\_\_ Salt Water \_\_\_\_\_ Feet \_\_\_\_\_

Formation	Color	Hard or Soft	Top	Bottom	Oil Gas	Depth	Remarks
Clay			0	4			
Sand			4	34			
Red Rock & Shale			34	73			
Sand			73	80			
Shale			80	95			
Red Rock			95	100			
Lime			100	104			
Red Rock & Shale			104	154			
Sand			154	169			
Red Rock & Shale			169	241			
Lime & Shale			241	263			
Slate			263	289			
Red Rock & Shells			289	400			
Red Rock & Slate			400	430			
Lime			430	446			
Red Rock & Shells			446	550			
Sand			550	570			
Shale & Shells			570	604			
Red Rock			604	635			
Lime & Slate			635	645			
Lime			645	658			
Slate & Red Rock			658	720			
Sand			720	751			
Shale			751	757			
Sand			757	803			
Slate			803	810			
Lime			810	830			
Slate & Shells			830	930			
Sand			930	985			
					Water	251'	1/2 - Per hr.
					Water	560'	2 bailers/hr
					Water	965'	1 bailer/hr



Formation	Color	Hard or Soft	Top 7	Bottom	Oil, Gas or Water	Depth Found	Remarks
Red Rock & Slate			985	1145			
Lime & Slate			1145	1164			
Red Rock & Slate			1164	1175			
Lime			1175	1185			
Red Rock, Slate & Shells			1185	1345			
Sand			1345	1515	Water	1470'	Hole caves 1 bailor/hr.
Slate & Shells			1515	1576			Hole caves
Lime			1576	1600			
Slate & Lime			1600	1602			
Lime			1602	1659			
Lime & Slate			1659	1700			
Shale			1700	1720			
Sand			1720	1785	Water	1739'	3 bailors/hr
Slate			1785	1807			
Shale			1807	1849			
Lime & Slate			1849	1877			
Lime, sandy			1877	1930			
Slate & Shells			1930	2046			
Sand			2046	2058			
Slate & Shells			2058	2092			
Sand			2092	2120			
Slate & Lime			2120	2128			
Lime, sandy			2128	2136			
Red Rock, Shale & Lime			2136	2218			
Slate			2218	2235			
Sand			2235	2239			
Slate & Lime			2239	2252			
Lime			2252	2284			
Slate			2284	2289			
Lime			2289	2298			
Sand			2298	2318	Oil		Just a odor
Lime, sandy			2318	2331			
Sand			2331	2331			
Lime, sandy			2331	2428	Oil	2421'	Show
Slate			2428	2432			
Lime, sandy			2432	2456			
Slate			2456	2466			
Total Depth				2466			

Date May 31, 1964

APPROVED Petroleum Promotions, Inc., Owner

By Jerry Masoner, Supt.  
(Title)

*Jerry Masoner*