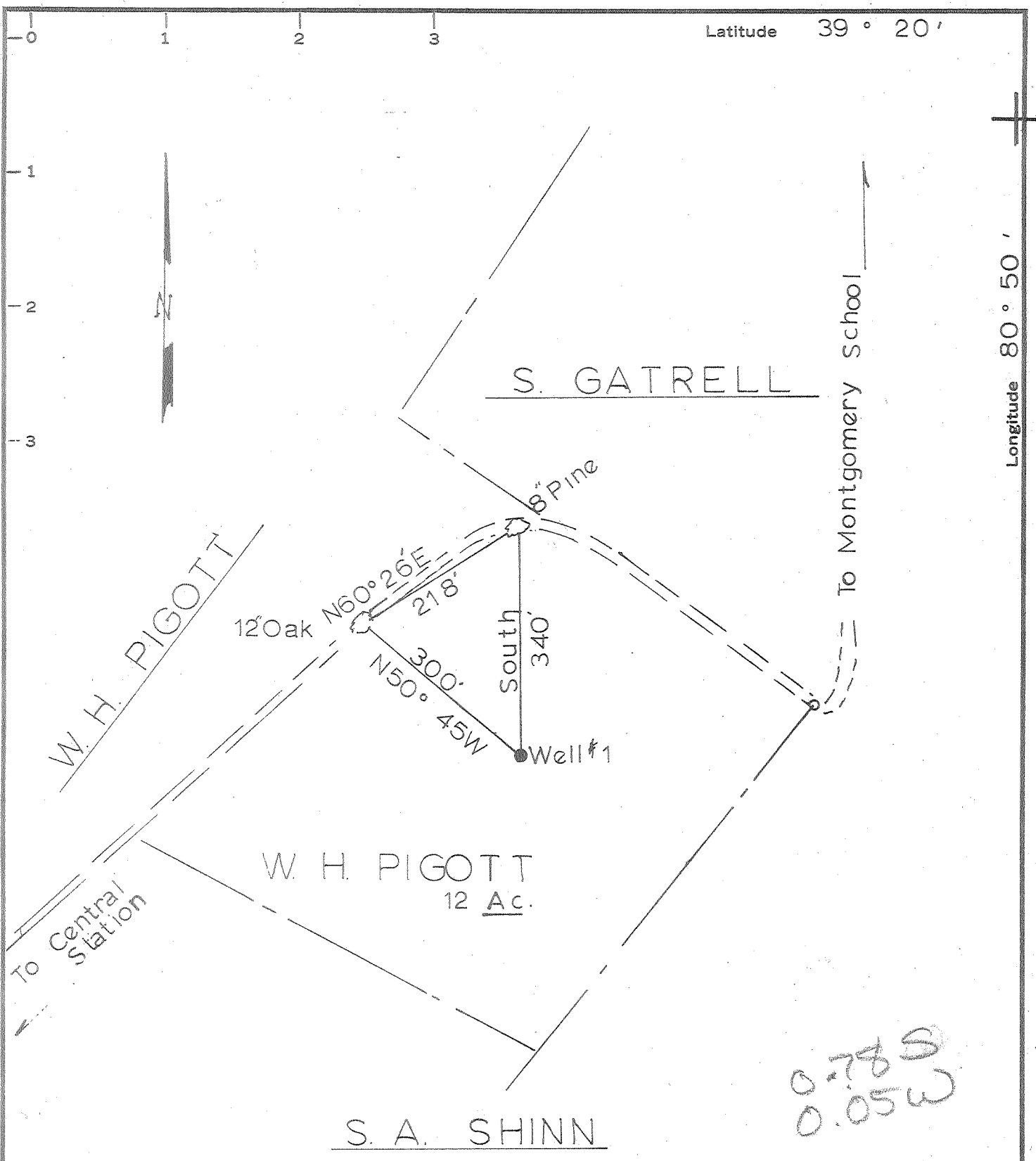


PV



MINIMUM ERROR OF CLOSURE 1/10,000  
 SOURCE OF ELEVATION Well #1 Pigott Tract

New Location   
 Drill Deeper   
 Abandonment

"I, THE UNDERSIGNED, HEREBY CERTIFY THAT THIS MAP IS CORRECT TO THE BEST OF MY KNOWLEDGE AND BELIEF AND SHOWS ALL THE INFORMATION REQUIRED BY PARAGRAPH 6 OF THE RULES AND REGULATIONS OF THE OIL AND GAS SECTION OF THE MINING LAWS OF WEST VIRGINIA."

Company Prior Oil Company  
 Address Union Trust Bldg. Parkersburg,  
 Farm W. H. Pigott W. VA.  
 Tract 2 Acres 12 Lease No. \_\_\_\_\_  
 Well (Farm) No. 1 Serial No. \_\_\_\_\_  
 Elevation (Spirit Level) 951  
 Quadrangle West Union - SC  
 County Doddridge District Central  
 Engineer Gordon C Ralls  
 Engineer's Registration No. 4052  
 File No. \_\_\_\_\_ Drawing No. \_\_\_\_\_  
 Date Dec. 14, 1963 Scale 1" = 200'

STATE OF WEST VIRGINIA  
 DEPARTMENT OF MINES  
 OIL AND GAS DIVISION  
 CHARLESTON

WELL LOCATION MAP  
 FILE NO. 200-1082

+ Denotes location of well on United States Topographic Maps, scale 1 to 62,500, latitude and longitude lines being represented by border lines as shown.

- Denotes one inch spaces on border line of original tracing.