

I, the undersigned, hereby certify that this map is correct to the best of my knowledge and belief and shows all of the information required by paragraph 4 of the rules and regulations of the oil and gas section of the mining laws of West Virginia.

*Walter J. P. E. No. 1227*

New Location   
 Drill Deeper   
 Abandonment

Error in Closure: - Less than 1' in 200'

Company Furrell & Prier  
 Address 720 Union Trust Bldg. Parkersburg W. Va.  
 Farm M. C. Montgomery  
 Tract \_\_\_\_\_ Acres 20.5 Lease No. \_\_\_\_\_  
 Well (Farm) No. One Serial No. \_\_\_\_\_  
 Elevation (Spirit Level) 726'  
 Quadrangle West Union 5C  
 County Roddridge District Central  
 Engineer Walter J. P. E. No. 1227  
 Engineer's Registration No. 1227  
 File No. \_\_\_\_\_ Drawing No. \_\_\_\_\_  
 Date Dec 10, 1963 Scale 1" = 200' = 330'

STATE OF WEST VIRGINIA  
 DEPARTMENT OF MINES  
 OIL AND GAS DIVISION  
 CHARLESTON

WELL LOCATION MAP

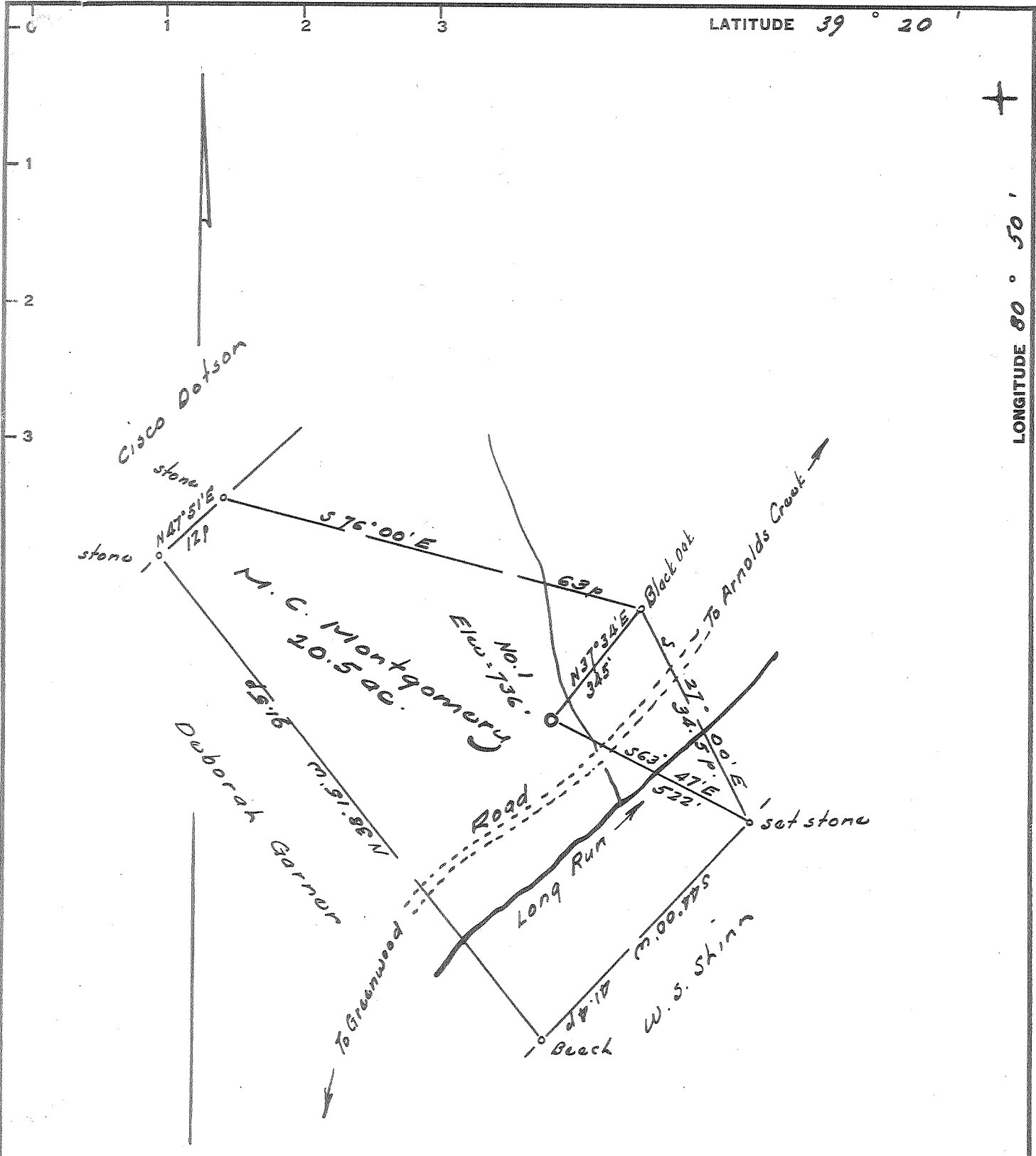
FILE NO. Dod-1078

**CANCELLED**

+ Denotes location of well on United States Topographic Maps, scale 1 to 62,500, latitude and longitude lines being represented by border lines as shown.

- Denotes one inch spaces on border line of original tracing.

PV



I, the undersigned, hereby certify that this map is correct to the best of my knowledge and belief and in accordance with the information required by law and that I am a duly licensed and qualified engineer and geologist under the laws of the State of West Virginia.

*W. S. Skinn*  
 W. S. Skinn  
 No. 1227

New Location.....   
 Drill Deeper.....   
 Abandonment.....

Error in Closure: - Less than 1' in 200'

Company Ferrill L. Prior  
 Address 120 Union Trust Bldg., Parkersburg W. Va.  
 Farm M. C. Montgomery  
 Tract \_\_\_\_\_ Acres 20.5 Lease No. \_\_\_\_\_  
 Well (Farm) No. One Serial No. \_\_\_\_\_  
 Elevation (Spirit Level) 736'  
 Quadrangle West Union - SC  
 County Doddridge District Central  
 Engineer W. S. Skinn  
 Engineer's Registration No. 1227  
 File No. \_\_\_\_\_ Drawing No. \_\_\_\_\_  
 Date Dec 10, 1963 Scale 1" = 200' = 330'

STATE OF WEST VIRGINIA  
 DEPARTMENT OF MINES  
 OIL AND GAS DIVISION  
 CHARLESTON

WELL LOCATION MAP  
 FILE NO. Dod-1078

+ Denotes location of well on United States Topographic Maps, scale 1 to 62,500, latitude and longitude lines being represented by border lines as shown.  
 - Denotes one inch spaces on border line of original tracing.