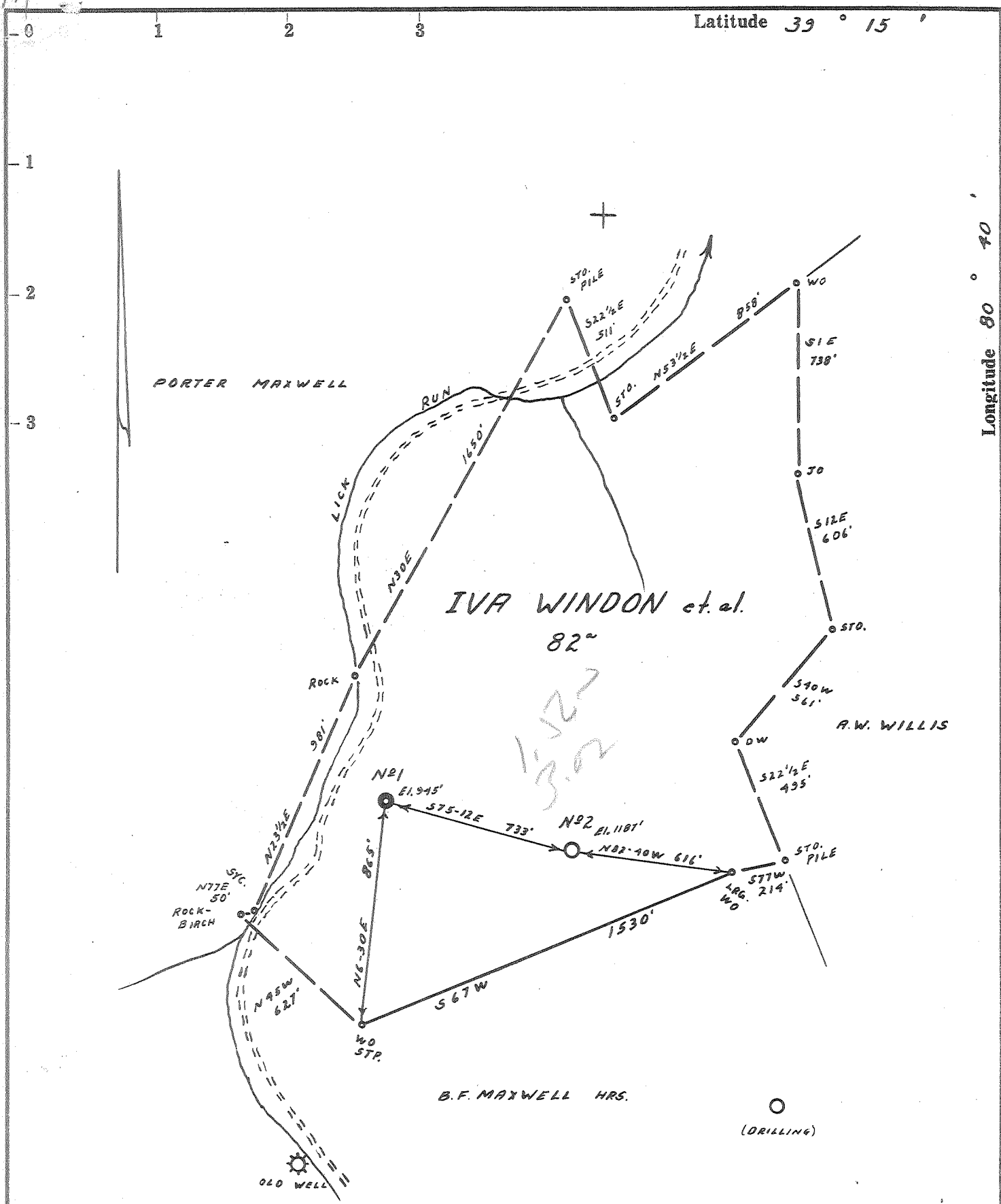


PV



- Redrill.....
- New Location.
- Drill Deeper.....
- Abandonment.....

I, the undersigned, hereby certify that this map is correct to the best of my knowledge and belief and shows all the information required by paragraph 6 of the rules and regulations of the oil and gas section of the mining laws of West Virginia.

Minimum accuracy, one part in 200

Company	DODDRIDGE GAS N <sup>o</sup> 2-A		
Address	CLARKSBURG, W. VA.		
Farm	IVA WINDON et al.		
Tract	Acres	82	Lease No.
Well (Farm) No.	2	Serial No.	
Elevation (Spirit Level)	1187'		
Quadrangle	VADIS NW 1 <sup>1</sup>		
County	DODDRIDGE District NEW MILTON		
Engineer	James D. Jeffers		
Engineer's Registration No.	1084		
File No.	207/52	Drawing No.	
Date	12-7-63	Scale	1" = 500'

STATE OF WEST VIRGINIA  
DEPARTMENT OF MINES  
OIL AND GAS DIVISION  
CHARLESTON

**WELL LOCATION MAP**  
FILE NO. DOD-1077

+ Denotes location of well on United States Topographic Maps, scale 1 to 62,500, latitude and longitude lines being represented by border lines as shown.

— Denotes one inch spaces on border line of original tracing.

RDM E

6-6 144



STATE OF WEST VIRGINIA  
DEPARTMENT OF MINES  
OIL AND GAS DIVISION 4

Quadrangle Vadis  
Permit No. DOD-1077

WELL RECORD

Oil or Gas Well Oil  
(KIND)

Company DODDRIDGE GAS NO. 2-A  
Address P. O. Drawer 351, Clarksburg, W. Va.  
Farm Iva Windon Acres \_\_\_\_\_  
Location (waters) \_\_\_\_\_  
Well No. Two Elev. 1187  
District New Milton County Doddridge  
The surface of tract is owned in fee by Iva Windon, et. al  
Blandville, Address W. Va.  
Mineral rights are owned by Same  
Address Same  
Drilling commenced 12/24/63  
Drilling completed 1/29/64  
Date Shot \_\_\_\_\_ From \_\_\_\_\_ To \_\_\_\_\_  
With \_\_\_\_\_  
Open Flow /10ths Water in \_\_\_\_\_ Inch  
/10ths Merc. in \_\_\_\_\_ Inch  
Volume \_\_\_\_\_ Cu. Ft.  
Rock Pressure \_\_\_\_\_ lbs. \_\_\_\_\_ hrs.  
Oil \_\_\_\_\_ bbls., 1st 24 hrs.  
WELL ACIDIZED \_\_\_\_\_  
WELL FRACTURED 1100 bbls. water

Casing and Tubing	Used in Drilling	Left in Well	Packers
Size			Kind of Packer
16			
13			
10	<u>305'</u>	<u>None</u>	Size of
8 1/4	<u>1265'</u>	<u>1265'</u>	Depth set
6 5/8			
5 3/16			
<u>4 1/2"</u>	<u>2167'</u>	<u>2167'</u>	Perf. top
<u>2" Tubing</u>	<u>2070'</u>	<u>2070'</u>	Perf. bottom
Liners Used			Perf. top
			Perf. bottom

CASING CEMENTED 4 1/2" SIZE 200' No. Ft. III Date 1/31/64  
- 50 lbs. cement, 200 gal. cement  
COAL WAS ENCOUNTERED AT \_\_\_\_\_ FEET \_\_\_\_\_ INCHES  
\_\_\_\_\_ FEET \_\_\_\_\_ INCHES  
\_\_\_\_\_ FEET \_\_\_\_\_ INCHES

RESULT AFTER TREATMENT 60/10 W. 1 1/2" - 20 bbls oil  
ROCK PRESSURE AFTER TREATMENT 540# - 48 Hrs.  
Fresh Water \_\_\_\_\_ Feet Salt Water \_\_\_\_\_ Feet

Formation	Color	Hard or Soft	Top	Bottom	Oil, Gas or Water	Depth	Remarks
Top Soil			5	10			
Red Rock			10	15			
Sand			15	25			Ran one piece of Conduit Pipe 16" - 17'
Red Rock			25	70			
Sand			70	95			
Red Rock			95	100			140' to 150' Water 3 bailers per hour
Sand			100	105			
Slate & Shells			105	145			
Red Rock			145	240			
Slate & Shells			240	250			
Sand			250	288			
Red Rock			288	300			Ran 300' - 6" of 10" Pipe + 4" & 4" Drill Nipple
Slate & Shells			300	320			
Sand			320	340			
Slate & Shells			340	410			
Red Rock Slate			410	430			
Slate & Shells			430	440			
Red Rock			440	490			
Gritty Lime			490	510			
Sand			510	550			
Slate & Shells			550	565			
Red Rock			565	583			
Lime			583	615			
Slate & Shells			615	635			
Lime			635	665			
Slate & Shells			665	755			
Red Rock			755	875			



Formation	Color	Hard or Soft	Top 4'	Bottom	Oil, Gas or Water	Depth Found	Remarks
Slate & Shells			875	890			
Slate			890	1010			
Pink Rock			1010	1017			
Sand			1017	1052			
Slate & Shells			1052	1070			
Red Rock			1070	1075			
Slate & Shells			1075	1085			
Sand			1085	1100			
Lime			1100	1150			
Slate & Shells			1150	1160			
Gas Sand			1160	1172			
Slate & Shells			1172	1190			
Gray Lime			1190	1215			
Pink Rock			1215	1230			
Slate & Shells			1230	1250			
Lime			1250	1260			
Sand			1260	1380			
Slate & Shells			1380	1395			
Lime			1395	1445			
Slate & Shells			1445	1470			
Gritty Lime - Hard			1470	1490			
Sand			1490	1550			
Slate & Shells			1550	1610			
Sand			1610	1635			
Shale			1635	1640			
Slate & Shells			1640	1700			
Sand			1700	1800			
Slate & Shells			1800	1950			
Lime - Little			1950	1980			
Blue Monday			1980	2000			
Big Lime			2000	2065			
Big Injun			2065	2080			
Shale			2080	2090			
Sand			2090	2130			
Shale			2130	2167			
							<p>W Ran 1264' &amp; 9" of 8" Casing - 58 pieces</p> <p>Show of Oil 2045 - 2055  Show of Gas 2045 - 2065  Increasing 2060 to 2065  10/10 Gas with 1 1/2" at 2067</p> <p>Show of oil 2067 - 2074  Gas 9/10 W 1 1/2 2105-2115  Gas started to increase at 2105  Oil Pay 2115  Gas tested before Frac. 10/10 W 1 1/2"</p> <p>First perforated from 2122-2132 - 11 holes  Baker plug set 2090  Perforated 2076-2080  " 2059 - <del>2068</del> 2068  Fractured 32,000# Sand  Treated 2400# Pressure  Inject. 21-8  Acid 500 Gal.  Water 593 bbls.</p> <p>Second Frac. 1300# Sand  3000# Pressure  17-9 Inject.  500 gal acid  600 bbls water</p> <p>After Frac. Gas tested  10/10 W 1 1/2"  Oil Prod. 10 bbls per day</p>

Date February 19, 1964

APPROVED

DODDRIDGE GAS NO. 2-A

Owner

By

(Title)