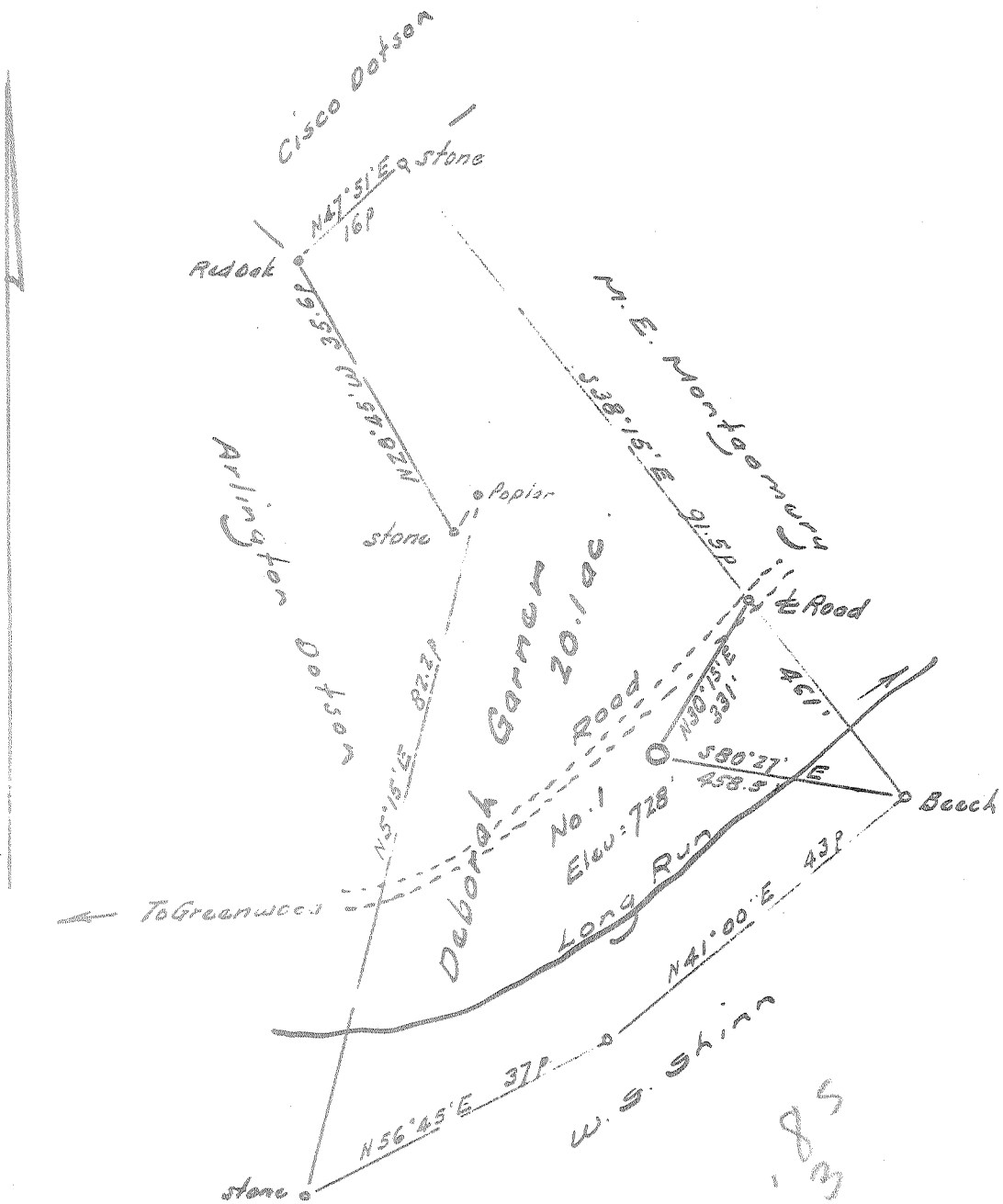


LATITUDE 39° 20'

LONGITUDE 80° 50'



*W. S. Shinn*

- New Location
- Drill Deeper
- Abandonment

Error in Closure is less than 1' in 200'

Company Prior Oil Co.  
 Address 770 Union Trust Bldg. Parkersburg W. Va.  
 Farm D. Gacour  
 Tract \_\_\_\_\_ Acres 20.1 Lease No. \_\_\_\_\_  
 Well (Farm) No. Two Serial No. \_\_\_\_\_  
 Elevation (Spirit Level) 728  
 Quadrangle West Union-86  
 County Doddridge District Central  
 Engineer W. S. Shinn  
 Engineer's Registration No. 1227  
 File No. \_\_\_\_\_ Drawing No. \_\_\_\_\_  
 Date Nov. 15, 1963 Scale 1"=200'

STATE OF WEST VIRGINIA  
DEPARTMENT OF MINES  
OIL AND GAS DIVISION  
CHARLESTON

WELL LOCATION MAP  
FILE NO. Dod-1070

† Denotes location of well on United States Topographic Maps, scale 1 to 62,500, latitude and longitude lines being represented by border lines as shown.

— Denotes one inch spaces on border line of original tracing.



STATE OF WEST VIRGINIA  
DEPARTMENT OF MINES  
OIL AND GAS DIVISION 7

Rotary   
Spudder   
Cable Tools   
Storage

Quadrangle WEST UNION

WELL RECORD

Permit No. DOD-1070

Oil or Gas Well OIL  
(KIND)

Company PRIOR OIL COMPANY  
Address 720 UNION TRUST BLDG., PARKERSBURG, W. VA.  
Farm D. GARNER Acres 20  
Location (waters) LONG RUN  
Well No. 1 Elev. 728  
District CENTRAL County DODDRIDGE  
The surface of tract is owned in fee by J. C. SHEPHERD  
Address GREENWOOD, W. VA.  
Mineral rights are owned by J. C. SHEPHERD  
Address GREENWOOD, W. VA.

Casing and Tubing	Used in Drilling	Left in Well	Packers
Size			Kind of Packer
16			
13			
10			Size of
8 3/4	64'	64'	Depth set
6 3/4			
5 3/16			
4 1/2	1790'	1790'	Perf. top 1723'
2			Perf. bottom 1736'
Liners Used			Perf. top
			Perf. bottom

Drilling commenced DECEMBER 11, 1963  
Drilling completed JANUARY 7, 1964  
Date Shot From To  
With  
Open Flow /10ths Water in Inch  
/10ths Merc. in Inch  
Volume Cu. Ft.  
Rock Pressure lbs. hrs.  
Oil bbls., 1st 24 hrs.  
WELL ACIDIZED 250 GAL.

CASING CEMENTED 4 1/2" SIZE 1790' No. Ft. 12/18/63 Date  
ROTARY - MUD & GEL TO SURFACE  
75 sks. cement Halliburton  
COAL WAS ENCOUNTERED AT FEET INCHES  
FEET INCHES FEET INCHES  
NO COAL  
FEET INCHES FEET INCHES

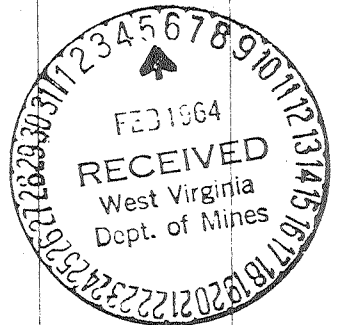
WELL FRACTURED 700 BBLs. WATER-40,000# OF SAND

RESULT AFTER TREATMENT 9 to 11 bbls. - 24 hrs.

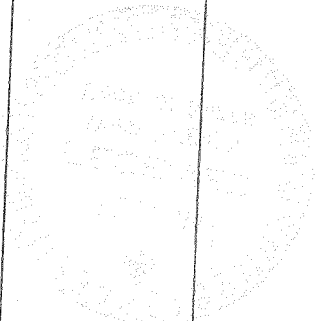
ROCK PRESSURE AFTER TREATMENT 490 #

Fresh Water NONE RECORDED Feet Salt Water NONE RECORDED Feet

Formation	Color	Hard or Soft	Top	Bottom	Oil, Gas or Water	Depth	Remarks
Surface			0	28	ROTARY-WELL DRILLED WITH CIRCULATING GEL		
White sand			28	46			
Shale			46	68			
Red rock			68	84			
Slate & shells			84	96			
Sand & shells			96	136			
Gray shale			136	151			
Sand			151	176			
Sandy lime			176	194			
Black shale			194	229			
Shale & sand			229	264			
Shale			264	292			
Slate & shells			292	327			
Sandy lime			327	346			
Shale			346	374			
Sandy shale			374	398			
Slate & shells			398	446			
Gray sand			446	492			
Sand			492	536			
Shale			536	566			
Sand & shale			566	604			
Black shale			604	636			
Sandy shale			636	652			
Sand			652	698			
Sand & shells			698	739			
Shale			739	784			
Sandy shale			784	816			
Gray shale			816	867			
Sand			867	914			
Shale			914	962			



Formation	Color	Hard or Soft	Top <sup>7</sup>	Bottom	Oil, Gas or Water	Depth Found	Remarks
Sandy shale			962	1020			
Slate-shells			1020	1084			
Gray shale			1084	1126			
Sandy shale			1126	1189			
Sand			1189	1236			
Sand-shale			1236	1290			
Slate-shells			1290	1367			
Shale			1367	1403			
Sand			1403	1423			
Shale			1423	1428			
Sandy shale			1428	1464			
Gray shale			1464	1586			
Lime-shale			1586	1628			
Big lime			1628	1710			
Sandy lime			1710	1748			
Shale			1748	1792			



Date FEBRUARY 4, 19 64

APPROVED PRIOR OIL COMPANY, Owner

By \_\_\_\_\_ (Title)