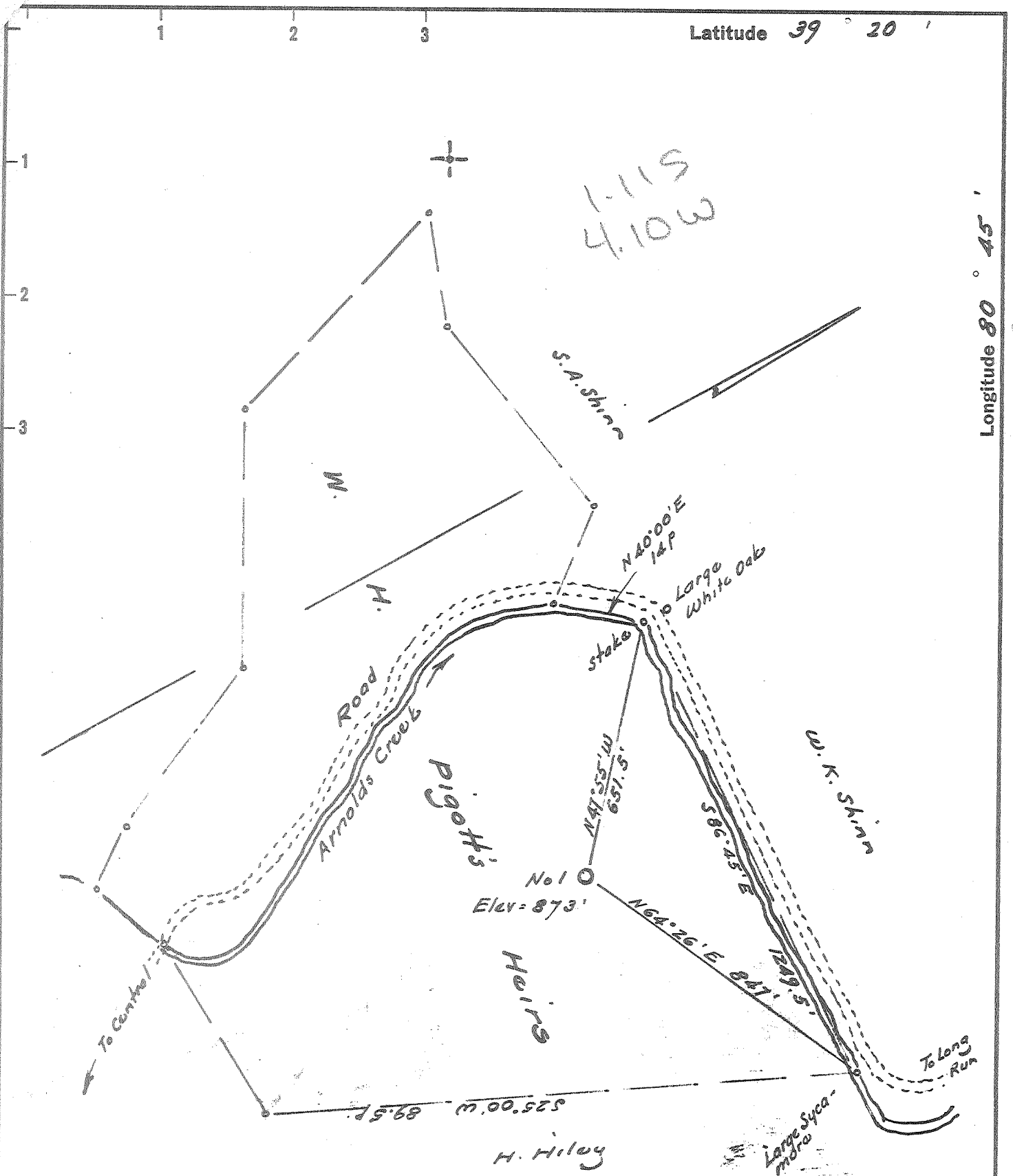


Latitude 39° 20'

Longitude 80° 45'



- New Location
- Drill Deeper
- Abandonment

Error in Closure: - Less than 1' in 200'

Widder J.

Company Ferrill L. Prior
 Address 720 Union Trust Bldg. Parkersburg West Va
 Farm W. H. Piggott
 Tract _____ Acres 64 Lease No. _____
 Well (Farm) No. One Serial No. _____
 Elevation (Spirit Level) 873
 Quadrangle West Union SE
 County Doddridge District Central
 Engineer Widder J.
 Engineer's Registration No. 1227
 File No. _____ Drawing No. _____
 Date Sept 21, 1963 Scale 1" = 300' = 495'

STATE OF WEST VIRGINIA
 DEPARTMENT OF MINES
 OIL AND GAS DIVISION
 CHARLESTON

WELL LOCATION MAP
 FILE NO. Dod-1061

+ Denotes location of well on United States Topographic Maps, scale 1 to 62,500, latitude and longitude lines being represented by border lines as shown.
 - Denotes one inch spaces on border line of original tracing.