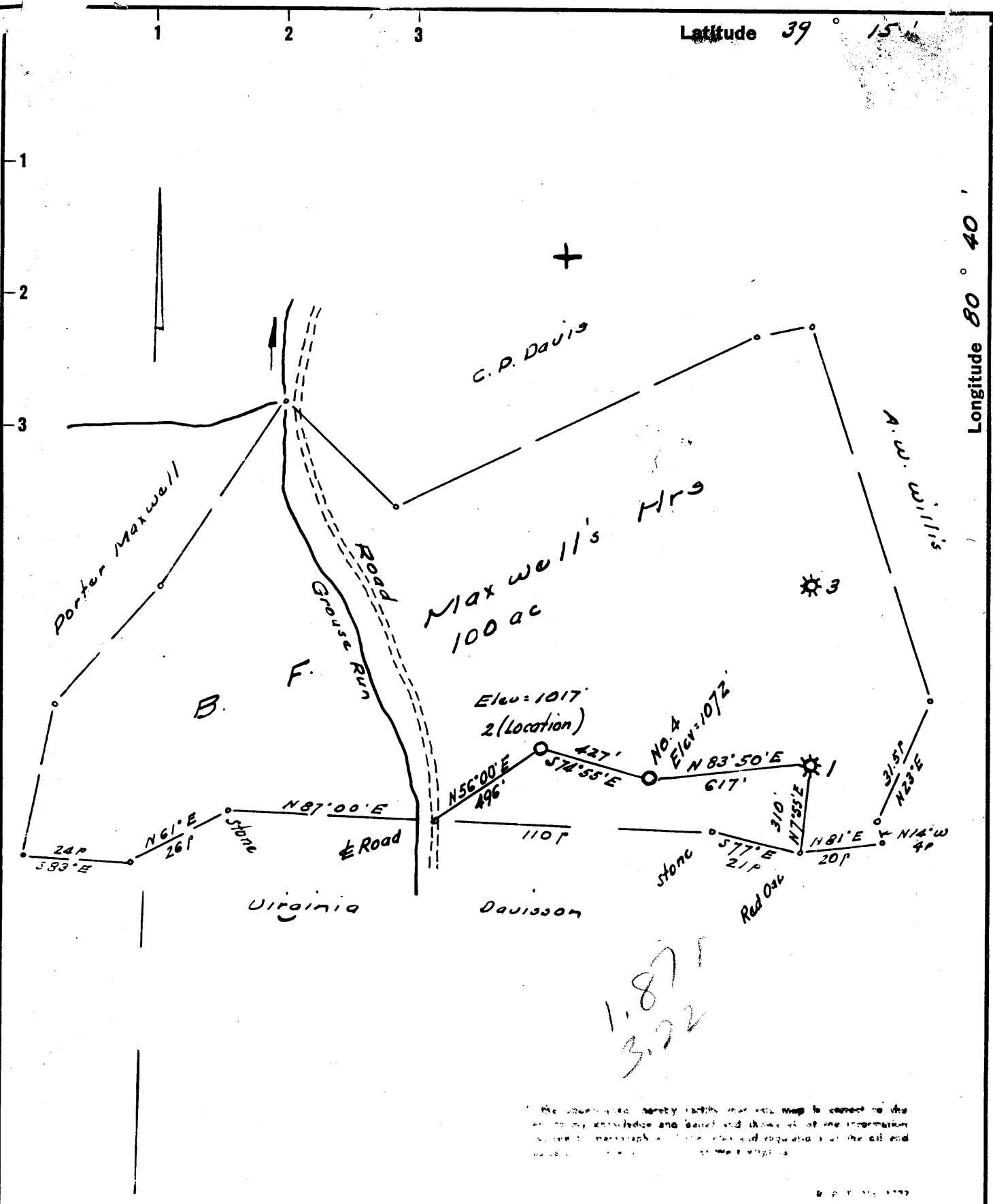


Latitude 39° 15'

Longitude 80° 40'



- New Location
- Drill Deeper
- Abandonment

Error in closure: Less than 1' in 200'

Company Devell, Jr Puloy
 Address 770 Union Trust Bldg, Parkersburg, W. Va.
 Farm B. F. Maxwell's Horses
 Tract _____ Acres 100 Lease No. _____
 Well (Farm) No. Four Serial No. _____
 Elevation (Spirit Level) 1072'
 Quadrangle Davis NW
 County Doddridge District New Milton
 Engineer W. H. Hall
 Engineer's Registration No. 1227
 File No. _____ Drawing No. _____
 Date Aug 14, 1963 Scale 1" = 300' x 495'

STATE OF WEST VIRGINIA
 DEPARTMENT OF MINES
 OIL AND GAS DIVISION
 CHARLESTON

WELL LOCATION MAP
 FILE NO. Dod-1049

- + Denotes location of well on United States Topographic Maps, scale 1 to 62,500, latitude and longitude lines being represented by border lines as shown.
- ☞ Denotes one inch spaces on border line of original tracing.

6-144



STATE OF WEST VIRGINIA
DEPARTMENT OF MINES
OIL AND GAS DIVISION 10 A

Quadrangle VADIS

Permit No. DOD-1049

WELL RECORD

Oil or Gas Well 012
~~OTH~~
(KIND)

Company FERRELL L. PRIOR
Address 720 UNION TRUST BLDG. PARKERSBURG, W. VA.
Farm B. F. MAXWELL HEIRS Acres 100
Location (waters) GROUSE RUN
Well No. FOUR Elev. 1072'
District NEW MILTON County DODDRIDGE
The surface of tract is owned in fee by ROBERT L. HOLLAND
Address W. UNION, W. VA.
Mineral rights are owned by ROBERT HOLLAND
Address W. UNION, W. VA.

Drilling commenced 8/20/63
Drilling completed 8/25/63
Date Shot From To
With

Open Flow /10ths Water in Inch
/10ths Merc. in Inch
Volume NOT TAKEN Cu. Ft.
Rock Pressure NOT TAKEN lbs. hrs.
Oil SHOW bbls., 1st 24 hrs.
WELL ACIDIZED 200 gallon

Casing and Tubing	Used in Drilling	Left in Well	Packers
Size			Kind of Packer
16			
13	32'	32'	
10			Size of
8 3/4			
6 5/8			Depth set
5 3/16			
X 4 1/2"	2170'	2170'	Perf. top 2022
2			Perf. bottom 2024
Liners Used			Perf. top 2030
			Perf. bottom 2032

CASING CEMENTED 2170 SIZE 4 1/2 No. Ft. 8/25/63 Date
150 sks. cement, LAWSON

COAL WAS ENCOUNTERED AT FEET INCHES
NONE
FEET INCHES FEET INCHES
FEET INCHES FEET INCHES

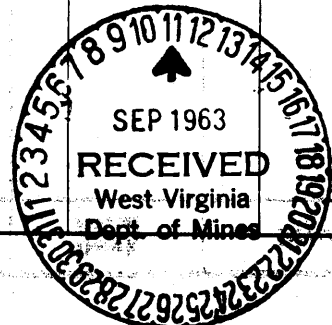
WELL FRACTURED 650 bbls. 19,000 # sand - well drilled with rotary-circulating gel

RESULT AFTER TREATMENT 40 bbls. of oil - 24 hrs.

ROCK PRESSURE AFTER TREATMENT 630# - 24 hrs.

Fresh Water NONE Feet Salt Water NONE Feet

Formation	Color	Hard or Soft	Top	Bottom	Oil, Gas or Water	Depth	Remarks
Surface			0	22	NO WATER RECORDED. DRILLED WITH CIRCULATING GEL.		
Red rock			22	52			
Sandy shale			52	104			
Sand			104	163			
Green shale			163	170			
Shale & lime			170	180			
Sand			180	200			
Lime			200	230			
Sand			230	300			
Shale			300	330			
Sand			330	390			
Shale			390	400			
Sand			400	520			
Shale			520	550			
Lime			550	560			
Shale			560	610			
Sand			610	740			
Red shale			740	760			
Sand			760	850			
Black shale			850	910			
Sand			910	930			
Green shale			930	960			
Sand			960	970			
Black shale			970	980			
Sand			980	1000			
Black shale			1000	1080			
Sand			1080	1150			
Shale			1150	1170			
Lime			1170	1200			
Sand			1200	1470			



Formation	Color	Hard or Soft	Top ^A / ₁₀	Bottom	Oil, Gas or Water	Depth Found	Remarks
Shale			1470	1480			
Sand			1480	1520			
Shale			1520	1550			
Sand			1550	1700			
Black shale			1700	1810			
Sand			1810	1870			
Shale			1870	1900			
Sand			1900	1935			
Shale			1935	1940			
Lime			1940	1995			
Big Lime			1995	2031	Odor		
Lime			2031	2147			
Shale			2147	2180	T.D.		

Date September 11, 1963

APPROVED Fennell L. Purser, Owner

By Edward R. Holland

(Title)

Attorney-in-Fact