

MINIMUM ERROR OF CLOSURE 1/500

SOURCE OF ELEVATION Fork of road at mouth of Righthand Fork

Elev. 829'

New Location

Drill Deeper

Abandonment

dated 7/30/74

"I, THE UNDERSIGNED, HEREBY CERTIFY THAT THIS MAP IS CORRECT TO THE BEST OF MY KNOWLEDGE AND BELIEF AND SHOWS ALL THE INFORMATION REQUIRED BY PARAGRAPH 6 OF THE RULES AND REGULATIONS OF THE OIL AND GAS SECTION OF THE MINING LAWS OF WEST VIRGINIA."

Remco Oil & Gas Corp. for:
Company Rudder Oil & Gas Co.
P.O. Box 99, Belpre, Ohio 45714
Address Box 248, Parkersburg, W. Va.

Farm Ruth Willis

Tract 1 Acres 13 Lease No. _____

Well (Farm) No. 1 Serial No. _____

Elevation (Spirit Level) 833'

Quadrangle Vadis NW

County Doddridge District New Milton

Engineer Parker G. Peters

Engineer's Registration No. 485

File No. _____ Drawing No. 1" = 10 P.

Date July 10, 1963 Scale 1" = 10 P.

STATE OF WEST VIRGINIA
DEPARTMENT OF MINES
OIL AND GAS DIVISION
CHARLESTON

WELL LOCATION MAP

FILE NO. DOD-1040-2

PLUGGING CANCELED

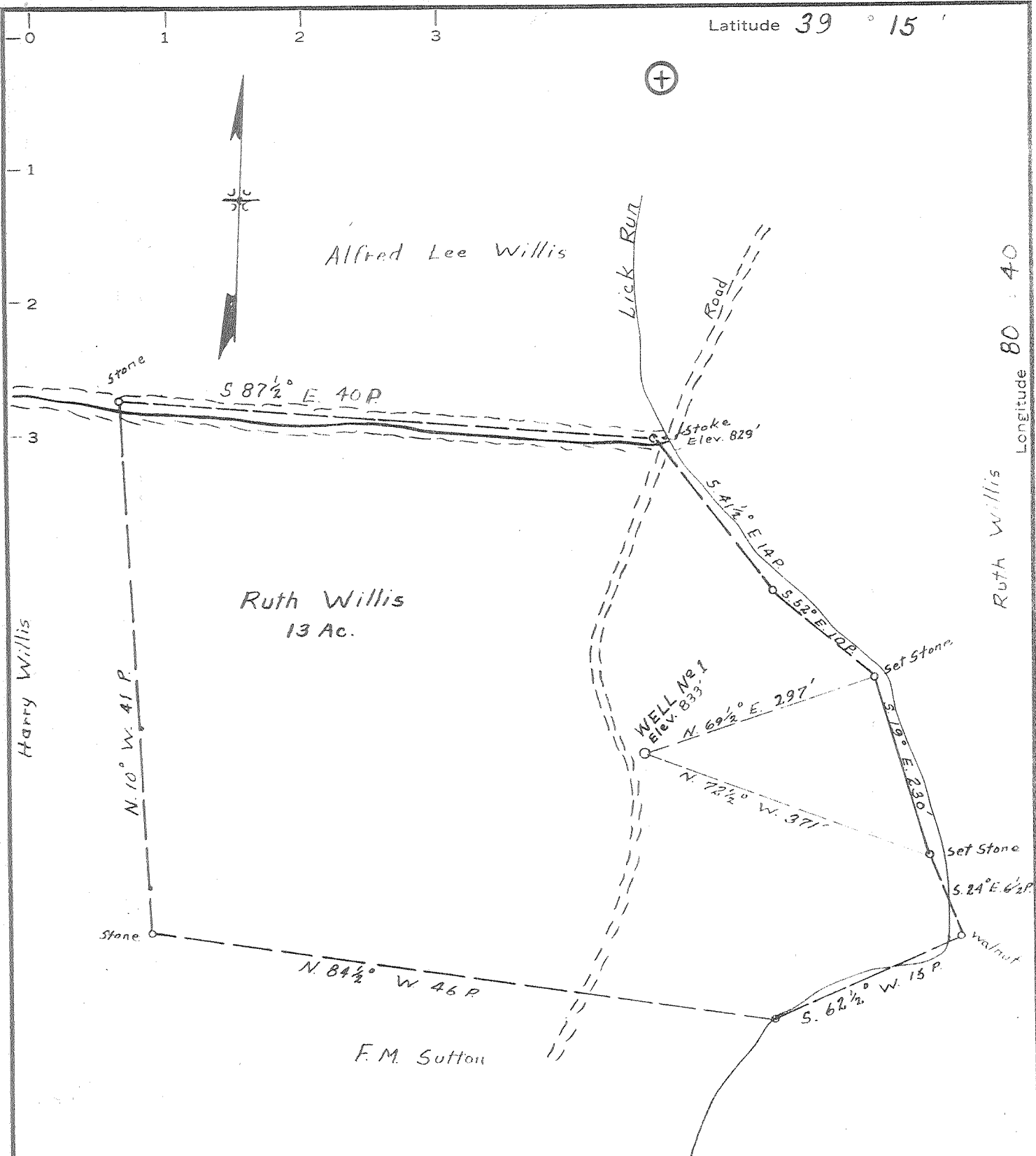
Denotes location of well on United States Topographic Maps, scale 1 to 62,500, latitude and longitude lines being represented by border lines as shown.

Denotes one inch spaces on border line of original tracing.

47-017

OCT 12 1976

Latitude 39 ° 15 '



Longitude 80 : 40

MINIMUM ERROR OF CLOSURE 1/500[±]
 SOURCE OF ELEVATION Fork of road at mouth of Righthand Fork
Elev. 829'

New Location
 Drill Deeper
 Abandonment

"I, THE UNDERSIGNED, HEREBY CERTIFY THAT THIS MAP IS CORRECT TO THE BEST OF MY KNOWLEDGE AND BELIEF AND SHOWS ALL THE INFORMATION REQUIRED BY PARAGRAPH 6 OF THE RULES AND REGULATIONS OF THE OIL AND GAS SECTION OF THE MINING LAWS OF WEST VIRGINIA."

dated 7/30/74
 Ramco Oil & Gas Corp. for:
 Company Rudder Oil & Gas Co.
 P.O. Box 99, Belpre, Ohio 45714
 Address Box 2118, Parkersburg, W. Va.
 Farm Ruth Willis
 Tract 1 Acres 13 Lease No. _____
 Well (Farm) No. 1 Serial No. _____
 Elevation (Spirit Level) 833'
 Quadrangle Vadis NW
 County Doddridge District New Milton
 Engineer Parker C. Peters
 Engineer's Registration No. 485
 File No. _____ Drawing No. 1" = 10 P.
 Date July 10, 1963 Scale 1" = 10 P.

STATE OF WEST VIRGINIA
 DEPARTMENT OF MINES
 OIL AND GAS DIVISION
 CHARLESTON
WELL LOCATION MAP
 FILE NO. DOD-1040-P

Denotes location of well on United States Topographic Maps, scale 1 to 62,500, latitude and longitude lines being represented by border lines as shown.

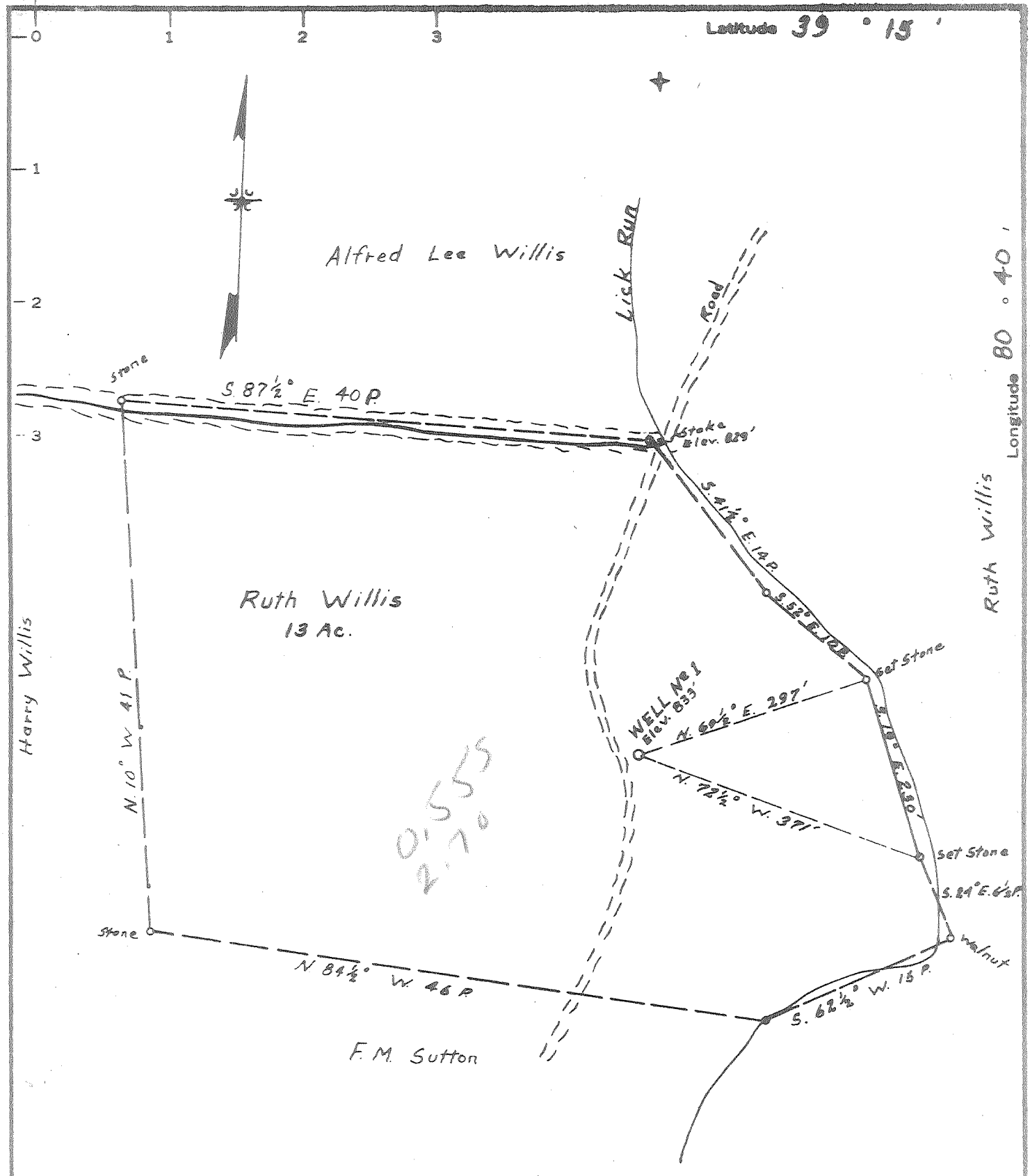
Denotes one inch spaces on border line of original tracing.

47-017

89° 15'

Latitude 39° 15'

Longitude 80° 40'



0.555
2.70

MINIMUM ERROR OF CLOSURE 1/500"

SOURCE OF ELEVATION Fork of road at mouth of Righthand Fork

Elev. 829'

New Location X
Drill Deeper _____
Abandonment _____

I, THE UNDERSIGNED, HEREBY CERTIFY THAT THIS MAP IS CORRECT TO THE BEST OF MY KNOWLEDGE AND BELIEF AND SHOWS ALL THE INFORMATION REQUIRED BY PARAGRAPH 6 OF THE RULES AND REGULATIONS OF THE OIL AND GAS SECTION OF THE MINING LAWS OF WEST VIRGINIA.

Company Rudder Oil & Gas Co.
 Address Box 2118, Parkersburg, W. Va.
 Farm Ruth Willis
 Tract 1 Acres 13 Lease No. _____
 Well (Farm No. 1 Serial No. _____
 Elevation (Spirit Level) 833'
 Quadrangle Vadis NW
 County Doddridge District New Milton
 Engineer Parker C. Peters
 Engineer's Registration No. 485
 File No. _____ Drawing No. 1-10 P.
 Date July 10, 1963 Scale 1" = 10 P.

STATE OF WEST VIRGINIA
 DEPARTMENT OF MINES
 OIL AND GAS DIVISION
 CHARLESTON

WELL LOCATION MAP
 FILE NO. DOD-1040

+ Denotes location of well on United States Topographic Maps, scale 1 to 62,500, latitude and longitude lines being represented by border lines as shown.

- Denotes one inch spaces on border line of original tracing.



STATE OF WEST VIRGINIA
DEPARTMENT OF MINES
OIL AND GAS DIVISION 7

Rotary
Spudder
Cable Tools
Storage

Quadrangle VADIS

Permit No. DOD -1040

WELL RECORD

Oil or Gas Well GAS
(KIND)

Company Rudder Oil & Gas Company
Address Box 2118, Parkersburg, W. Va.
Farm Ruth Willis Acres 13
Location (waters) Lick Run
Well No. 1 Elev. 833'
District New Milton County Doddridge
The surface of tract is owned in fee by Ruth Willis
Address Rt1, New Milton
Mineral rights are owned by Ruth Willis et al
Address Rt1, New Milton
Drilling commenced July 28, 1963
Drilling completed August 22, 1963
Date Shot From To
With
Open Flow 1 4/10ths Water in 2 Inch
 /10ths Merc. in Inch
Volume 165M Cu. Ft.
Rock Pressure lbs. hrs.
Oil bbls., 1st 24 hrs.
WELL ACIDIZED

Casing and Tubing	Used in Drilling	Left in Well	Packers
Size			Kind of Packer
14 1/2"	22	22	
13			
10	105	0	Size of
8 3/4"	717	0	
6 3/4"			Depth set
5 7/16" 4 1/2"		1763	
3			Perf. top
2			Perf. bottom
Liners Used			Perf. top
			Perf. bottom

CASING CEMENTED 4 1/2 SIZE 1763 No. Ft. 8/23/63 Date
Lawson Cementing Company 6 Gal Cement

COAL WAS ENCOUNTERED AT 0 FEET INCHES
 FEET INCHES FEET INCHES
 FEET INCHES FEET INCHES

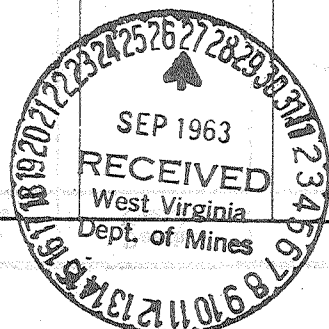
WELL FRACTURED Halliburton Co. 8/28/63 - Big Injun 34,000 gal, 48,000 # 20/40 sand;
Blue Monday 21,400 gal, 12,000 # 20/40 sand and 3,000 gal Reg 15% acid

RESULT AFTER TREATMENT 3,000 M

ROCK PRESSURE AFTER TREATMENT 600 #

Fresh Water Feet Salt Water Feet

Formation	Color	Hard or Soft	A. Top	Bottom	Oil, Gas or Water	Depth	Remarks
Sand		Hard	0	6			
Gravel		Soft	6	30			
Redrock		Soft	30	63			
Sand		Hard	63	100			
Slate		Soft	100	110			
Lime		Hard	110	115			
Sand		Hard	115	125			
Slate		Soft	125	143			
Redrock		Soft	143	170			
Lime		Hard	170	190			
Slate		Soft	190	203			
Lime		Hard	203	210			
Slate		Soft	210	223			
Lime		Hard	223	238			
Slate		Soft	238	310			
Sand		Hard	310	315			
Slate		Soft	315	350			
Redrock		Soft	350	375			
Sand		Hard	375	386			
Redrock		Soft	386	395			
Slate		Soft	395	410			
Redrock		Soft	410	435			
Slate Soft		435	445				
Redrock		Soft	445	460			
Sand		Hard	460	480			



Formation	Color	Hard or Soft	Top 7	Bottom	Oil, Gas or Water	Depth Found	Remarks
Slate		Soft	480	485			
Lime		Hard	485	500			
Redrock		Soft	500	515			
Slate		Soft	515	572			
Sand		Hard	572	588			
Slate		Soft	588	593			
Sand		Hard	593	628			
Slate		Soft	628	651			
Slate	Blue	Soft	651	678			
Sand	Black	Hard	678	684			
Slate	Blue	Soft	684	717			
Sand		Hard	717	722			
Slate		Soft	722	773			
Sand		Soft	773	810			
Slate		Soft	810	850			
Sand		Hard	850	905			
Slate	Black	Soft	905	915			
Sand		Hard	915	975			
Slate	Black	Soft	975	1012			
Sand		Hard	1012	1020			
Slate		Soft	1020	1070			
Sand		Hard	1070	1135			
Slate		Soft	1135	1214			
Sand S		Soft Hard	1214	1220			
Slate		Soft	1220	1265			
Sand		Hard	1265	1315			
Slate		Soft	1315	1457			
Sand		Hard	1457	1474			
Slate		Soft	1474	1480			
Redrock		Soft	1480	1500			
Lime		Hard	1500	1504			
Redrock		Soft	1504	1520			
Slate 8		Soft	1520	1536			
Lime		Hard	1536	1559			
Slate		Soft	1559	1564			
Sand		Hard	1564	1587	show of gas @ 1583'		
Big Lime		Hard	1587	1656	reduced hole @ 1630'		
Big Injun		Hard	1656	1727	show of oil @ 1675'		
Slate		Soft	1727	1763	show of gas @ 1685'		

Date September 25, 1963

APPROVED Rudder Oil & Gas Company, Owner
 By Neal Rudder
 Owner (Title)