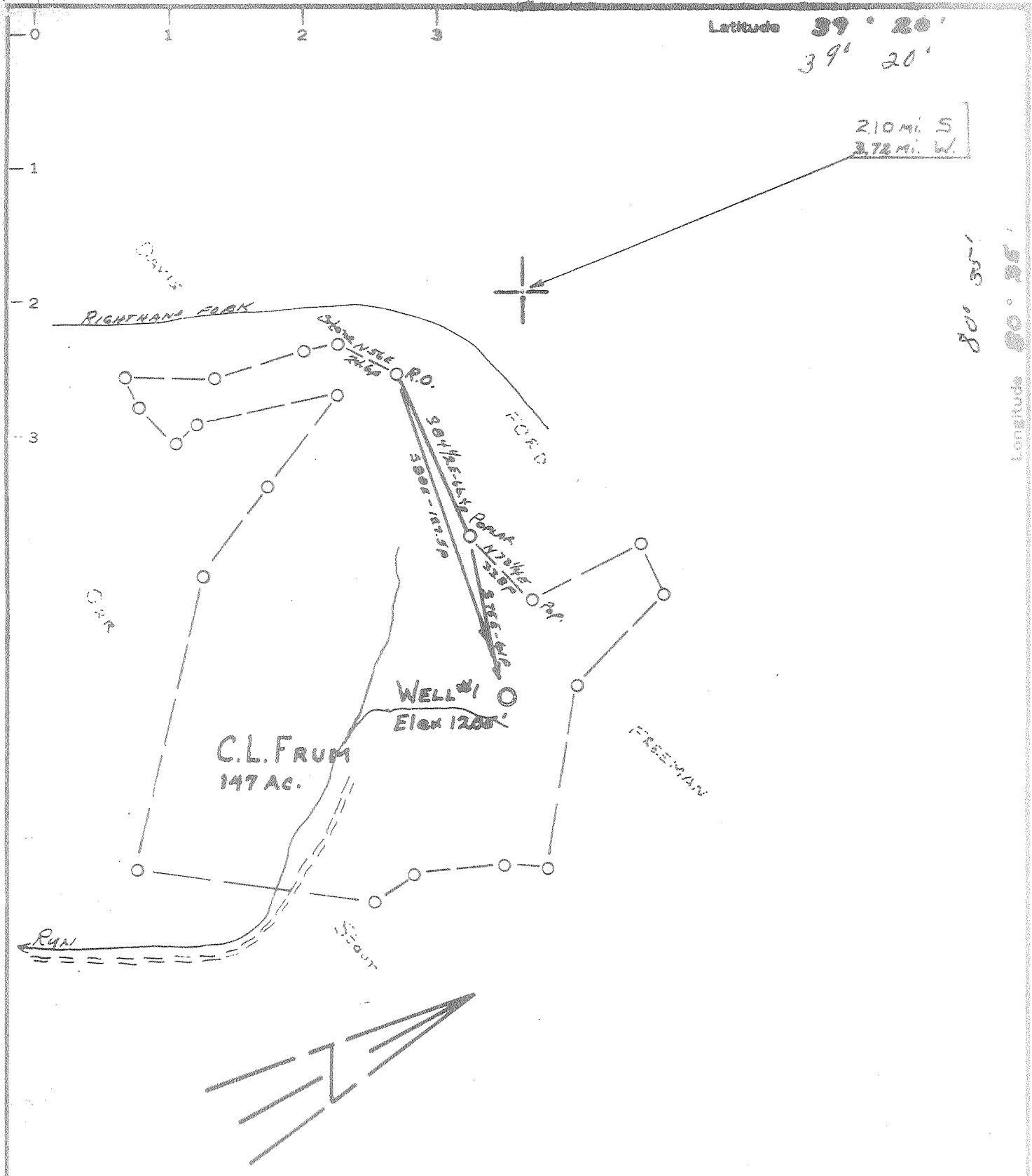


M



MINIMUM ERROR OF CLOSURE 1/8 to 200'

SOURCE OF ELEVATION Q. OF ROAD AT JUNCTION OF ROUTE 50 (1857')

New Location
 Drill Deeper
 Abandonment

"I, THE UNDERSIGNED, HEREBY CERTIFY THAT THIS MAP IS CORRECT TO THE BEST OF MY KNOWLEDGE AND BELIEF AND SHOWS ALL THE INFORMATION REQUIRED BY PARAGRAPH 6 OF THE RULES AND REGULATIONS OF THE OIL AND GAS SECTION OF THE MINING LAWS OF WEST VIRGINIA."

Company ALLEGHENY LAND & MINERAL Co.
 Address CLARKSBURG, W. VA.
 Farm C.L. FRUM
 Tract _____ Acres 147 Lease No. _____
 Well (Farm) No. ONE Serial No. A229
 Elevation (Spirit Level) 1205'
 Quadrangle CENTERPOINT SC
 County DODDRIDGE District GRANT
 Engineer Eric Waterman
 Engineer's Registration No. 3788
 File No. 63039-3 Drawing No. _____
 Date 7/1/63 Scale 1" = 50'

STATE OF WEST VIRGINIA
 DEPARTMENT OF MINES
 OIL AND GAS DIVISION
 CHARLESTON

WELL LOCATION MAP
 FILE NO. DOO-1039
 WAD: 017 72692

+ Denotes location of well on United States Topographic Maps, scale 1 to 62,500, latitude and longitude lines being represented by border lines as shown.

— Denotes one inch spaces on border line of original tracing.

6-6 99



STATE OF WEST VIRGINIA
DEPARTMENT OF MINES
OIL AND GAS DIVISION 7

- Rotary
- Spudder
- Cable Tools
- Storage

Quadrangle Centerpoint

WELL RECORD

Permit No. Dod-1039

Oil or Gas Well Gas
(KIND)

Company Allegheny Land & Mineral Company
Address Clarksburg, W.Va.
Farm C.L. Frum Acres 147
Location (waters) _____
Well No. A-224 Elev. 1205
District Grant County Doddridge
The surface of tract is owned in fee by C.L. Frum Heirs
Address Bridgeport, W.Va.
Mineral rights are owned by Same
Address _____

Casing and Tubing	Used in Drilling	Left in Well	Packers
Size			
16	18'	18'	Kind of Packer _____
13			
10	330'		Size of _____
8 1/4	1403'		
6 5/8	1812'		Depth set _____
5 3/4	2181'	2181'	
3			Perf. top <u>2078</u>
2			Perf. bottom <u>2084</u>
Liners Used			Perf. top _____
			Perf. bottom <u>20 shots</u>

Drilling commenced June 27, 1964
Drilling completed July 31, 1964
Date Shot _____ From _____ To _____
With _____
Open Flow 5 /10ths Water in 1 Inch
_____ /10ths Merc. in _____ Inch
Volume 23,000 Cu. Ft.
Rock Pressure 340# lbs. 12 hrs.
Oil None bbls., 1st 24 hrs.
WELL ACIDIZED _____

CASING CEMENTED 4 1/2" SIZE 381 No. Ft. 8-1-64 Date
40 bags cement 12 bags Bentonite

COAL WAS ENCOUNTERED AT _____ FEET _____ INCHES
_____ FEET _____ INCHES _____ FEET _____ INCHES
_____ FEET _____ INCHES _____ FEET _____ INCHES

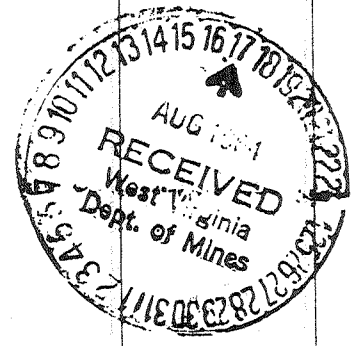
WELL FRACTURED August 10, 1964 -- By Dowell - Water, sand, acid.

RESULT AFTER TREATMENT 7/10 Mercury 4" 1,639 M

ROCK PRESSURE AFTER TREATMENT 630# 15 hr.

Fresh Water None Feet _____ Salt Water 1770 Feet _____ Hole full

Formation	Color	Hard or Soft	Top	Bottom	Oil, Gas or Water	Depth	Remarks
Red Rock			0	30			
Slate			30	110			
Red Rock			110	130			
Black slate			130	150			
Slate			150	240			
Lime			240	250			
Red Rock			250	280			
Slate shells			280	370			
Lime			370	375			
Black slate			375	400			
Slate shells			400	410			
Lime			410	445			
Red Rock			445	460			
Slate			460	465			
Lime			465	500			
Slate			500	550			
Slate shells			550	585			
Red Rock			585	595			
Lime			595	630			
Sand			630	660			
Black slate			660	680			
Slate			680	695			
Sand			695	725			
Slate			725	735			
Lime			735	740			
Slate shells			740	845			
Lime			845	850			
Slate			850	875			
Red Rock			875	920			
Slate			920	990			



Formation	Color	Hard or Soft	Top 7	Bottom	Oil, Gas or Water	Depth Found	Remarks
Red Rock			990	1030			
Slate			1030	1050			
Black slate			1050	1075			
Slate			1075	1095			
Red Rock			1095	1105			
Slate			1105	1140			
Black slate			1140	1165			
Slate			1165	1195			
Slate shells			1195	1240			
Lime			1240	1260			
Slate			1260	1280			
Lime			1280	1286			
Black slate			1286	1295			
Slate			1295	1307			
Sand			1307	1366			
Black slate			1366	1405			
Slate			1405	1420			
Sand			1420	1460			
Slate			1460	1470			
Sand			1470	1490			
Black slate			1490	1495			
Lime			1495	1505			
Black slate			1505	1538			
Sand			1538	1600	Gas	1548	Show
Black slate			1600	1615			
Slate			1615	1665			
Sand			1665	1795	Salt water	1770	Hole full
Lime			1795	1840			
Sand			1840	1862			
Slate			1862	1890			
Maxon			1890	1910			
Red Rock			1910	1915			
Slate			1915	1936			
Little Lime			1936	1955			
Black slate			1955	1975			
Big Lime			1975	2035			
Keener			2035	2077	Gas	2066	5/10 W 1"
Injun			2077	2122			23 M
Slate shells			2122	2132	Gas	2090	Show
Squaw			2132	2140			
Slate shells			2140	2181			
Total depth			2181	2181			

Date August 13, 1964

APPROVED Allegheny Land & Mineral Co., Owner

By Claron Dawson, Mahone, W. Va.
(Title)