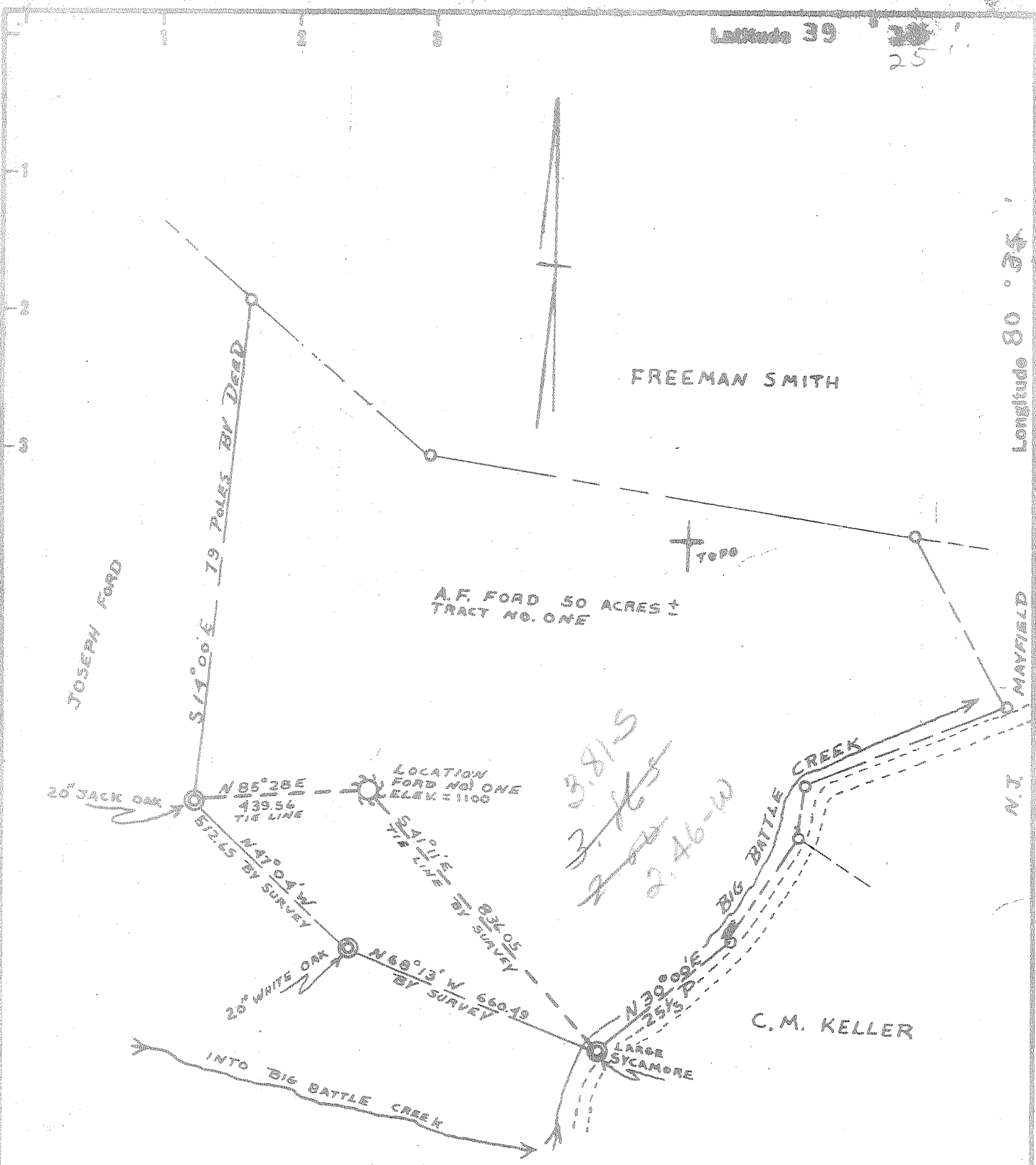


Latitude 39

25

Longitude 80 34

P



MIN. ERROR OF CLOSURE 1/3500

THE WELL LOCATED HEREIN IS SUCH THAT THIS
 MAP IS SUBJECT TO THE PROVISIONS OF AN ACT
 AND BEING AND THOUGH THE LOCATION OF
 OUR OIL AND GAS RIGHTS IS NOT THE
 LOCATION OF THE WELL IS THE
 MINING

- New Location
- Drill Deeper
- Abandonment

By Paul H. Dean

Company ALLEGHENY LAND & MINERAL CO.
 Address 318 PROFESSIONAL BUILDING
CLARKSBURG, WEST VIRGINIA
 Farm A.F. FORD
 Tract ONE Acres 50 ± Lease No. _____
 Well (Farm) No. ONE Serial No. A-213
 Elevation (Spirit Level) 1100
 Quadrangle CENTERPOINT
 County DEEDRIDGE District McCLELLAN
 Engineer Paul H. Dean
 Engineer's Registration No. 1856
 File No. 644 136-2 Drawing No. 63-32
 Date JUNE 5, 1963 Scale 1" = 20 POLES

STATE OF WEST VIRGINIA
 DEPARTMENT OF MINES
 OIL AND GAS DIVISION
 CHARLESTON

WELL LOCATION MAP
 FILE NO. Dea-1025

+ Denotes location of well on United States Topographic Maps, scale 1 to 62,500, latitude and longitude lines being represented by border lines as shown.
 - Denotes one inch spaces on border line of original tracing.



STATE OF WEST VIRGINIA
DEPARTMENT OF MINES
OIL AND GAS DIVISION //

Quadrangle Centerpoint

WELL RECORD

Permit No. Dod-1025

Oil or Gas Well Gas
(KIND)

Company Allegheny Land & Mineral Company
Address Clarksburg, W.Va.

Farm A.F. Ford Acres 50

Location (waters) _____

Well No. A-213 Elev. 1100

District McClellan County Doddridge

The surface of tract is owned in fee by A.F. Ford
Address Salem, W.Va.

Mineral rights are owned by Mrs. A.F. Ford Heirs
Address Salem, W.Va.

Drilling commenced September 3, 1963

Drilling completed October 12, 1963

Date Shot From _____ To _____

With _____

Open Flow 5 /10ths Water in 1 Inch
/10ths Merc. in _____ Inch

Volume 23,000 Cu. Ft.

Rock Pressure 500 lbs. 15 hrs.

Oil None bbls., 1st 24 hrs.

WELL ACIDIZED _____

WELL FRACTURED October 21, 1963 By Dowell- Water, sand, acid.

RESULT AFTER TREATMENT 5# Spring Gauge 2" 1,569 M

ROCK PRESSURE AFTER TREATMENT 460# 15 hr.

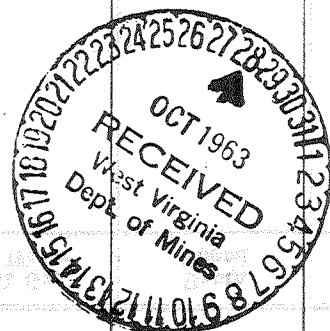
Fresh Water 1 1/2 bailers per hr 165 ft Salt Water Hole full Feet 1630

Casing and Tubing	Used in Drilling	Left in Well	Packers
Size			Kind of Packer
16	19'	19'	
13			
10	400'		Size of
8 1/4	1214'		
6 3/8	1640'		Depth set
5 3/16 4 1/2"	2192'	2192'	
3			Perf. top <u>2115</u>
2			Perf. bottom <u>2123</u>
Liners Used			Perf. top _____
			Perf. bottom _____

CASING CEMENTED 4 1/2" SIZE 392 No. Ft. 10-12-63 Date
45 Cement 2 Aquajel Dowell

COAL WAS ENCOUNTERED AT _____ FEET _____ INCHES
_____ FEET _____ INCHES FEET _____ INCHES
_____ FEET _____ INCHES FEET _____ INCHES

Formation	Color	Hard or Soft	Top	Bottom	Oil, Gas or Water	Depth	Remarks
Clay			0	15			
Slate shells			15	53			
Red Rock			53	70			
Sand			70	95			
Red Rock			95	110			
Slate shells			110	165			
Sand			165	220			
Slate shells			220	285			
Line			265	290			
Slate shells			290	310			
Red Rock			310	340			
Slate shells			340	385			
Red Rock			385	395			
Line			395	425			
Sand			425	455			
Slate shells			455	470			
Line			470	522			
Slate			523	528			
Line			528	600			
Slate shells			600	650			
Red Rock			650	655			
Slate			655	675			
Line			675	690			
Slate shells			690	720			
Line			720	725			
Sand			725	782			
Slate			782	790			
Line			790	810			
Pink Rock			810	815			
Slate shells			815	815			



Formation	Color	Hard or Soft	Top //	Bottom	Oil, Gas or Water	Depth Found	Remarks
Red Rock			943	948			
Lime			948	962			
Slate shells			962	1035			
Red Rock			1035	1070			
Lime			1070	1093			
Slate shells			1093	1115			
Lime			1115	1138			
Slate lime			1138	1195			
Lime			1195	1295			
Slate shells			1295	1365			
Sand			1365	1430			
Slate			1430	1440			
Sand			1440	1460			
Slate shells			1460	1490			
Lime			1490	1508			
Slate shells			1508	1612			
Sand			1612	1640	Salt water	1630	Hole full
Lime			1640	1645			
Slate shells			1645	1703			
Sand			1703	1745			
Slate			1745	1756			
Sand			1756	1795			
Slate			1795	1830			
Sand			1830	1863			
Gritty Lime			1863	1885			
Sand			1885	1888			
Lime			1888	1910			
Slate shells			1910	1917			
Red Rock			1917	1925			
Lime			1925	1948			
Red Rock			1948	1960			
Slate			1960	1973			
Little Lime			1973	1994			
Broken Lime			1994	2007			
Big Lime			2007	2073			
Sand			2073	2092			
Break			2092	2097			
Sand			2097	2140	Gas	2110 211-2128	5/10 W 1" 23 M
Sandy lime			2140	2192			
Total depth				2192			
			4 1/2" casing perforated:	2115 to 2123	-- 24	shots	

Date October 25, 1963

APPROVED Allegheny Land & Mineral Co., Owner
 by Claren Dawson, Mahone, W. Va.
 (Title)