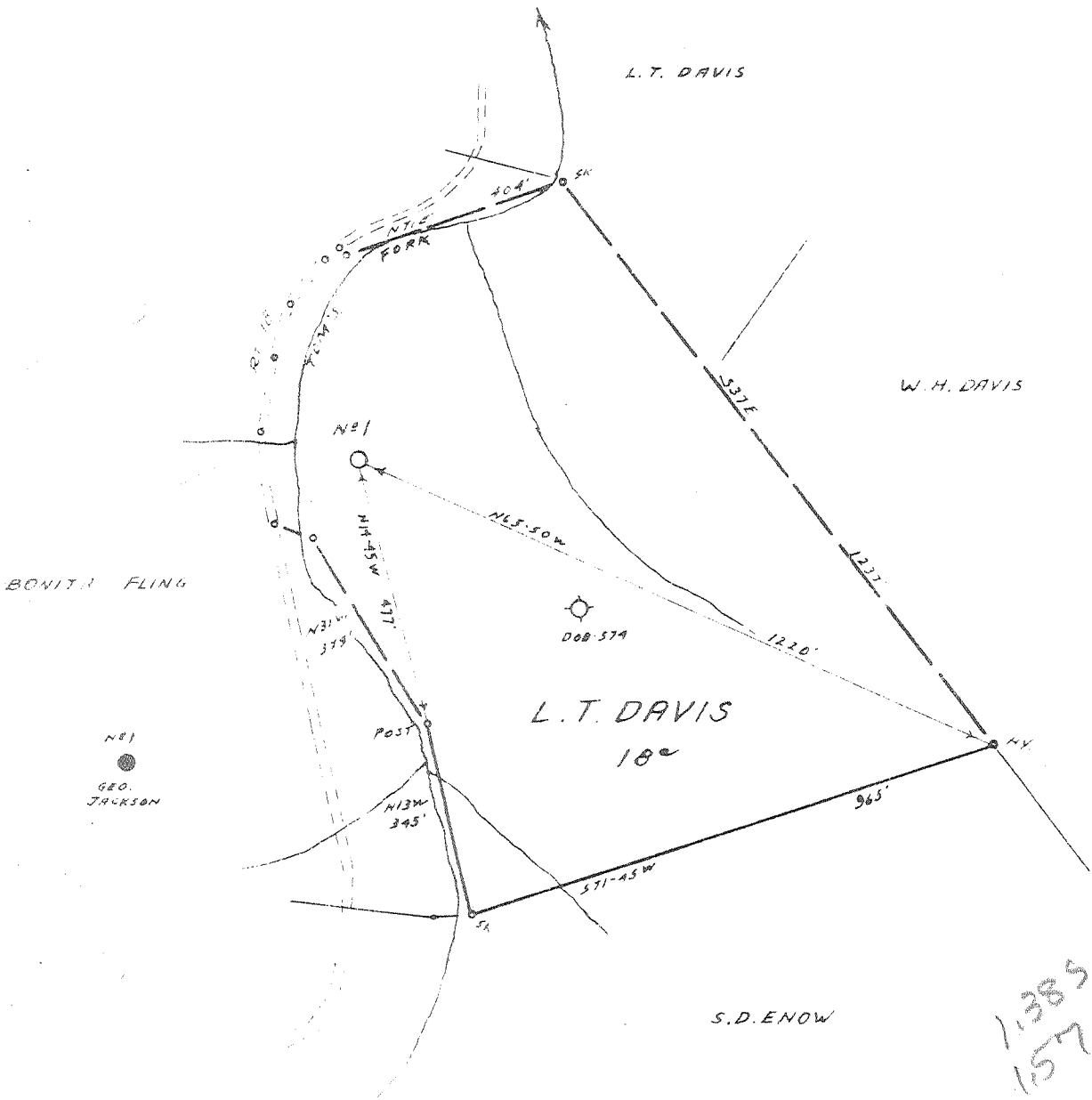


Latitude 39° 15'

Longitude 80° 40'



1385
157W

- Redrill
- New Location
- Drill Deeper
- Abandonment

I, the undersigned, hereby certify that this map is correct to the best of my knowledge and belief and shows all the information required by paragraph 6 of the rules and regulations of the oil and gas section of the mining laws of West Virginia.

Minimum accuracy, one part in 200

Company GEORGE JACKSON
 Address CLARKSBURG, W.VA.
 Farm L.T. DAVIS
 Tract Acres 18 Lease No.
 Well (Farm) No. 2 Serial No. 1
 Elevation (Spirit Level) 840'
 Quadrangle VADIS NW 12
 County DODDRIDGE District NEW MILTON
 Engineer Jamies J. Jefferson
 Engineer's Registration No. 1084
 File No. 206/66 Drawing No.
 Date 3-26-63 Scale 1" = 300'

STATE OF WEST VIRGINIA
DEPARTMENT OF MINES
OIL AND GAS DIVISION
CHARLESTON

WELL LOCATION MAP
FILE NO. DOD-1806

+ Denotes location of well on United States Topographic Maps, scale 1 to 62,500, latitude and longitude lines being represented by border lines as shown.

— Denotes one inch spaces on border line of original tracing.

RDM: