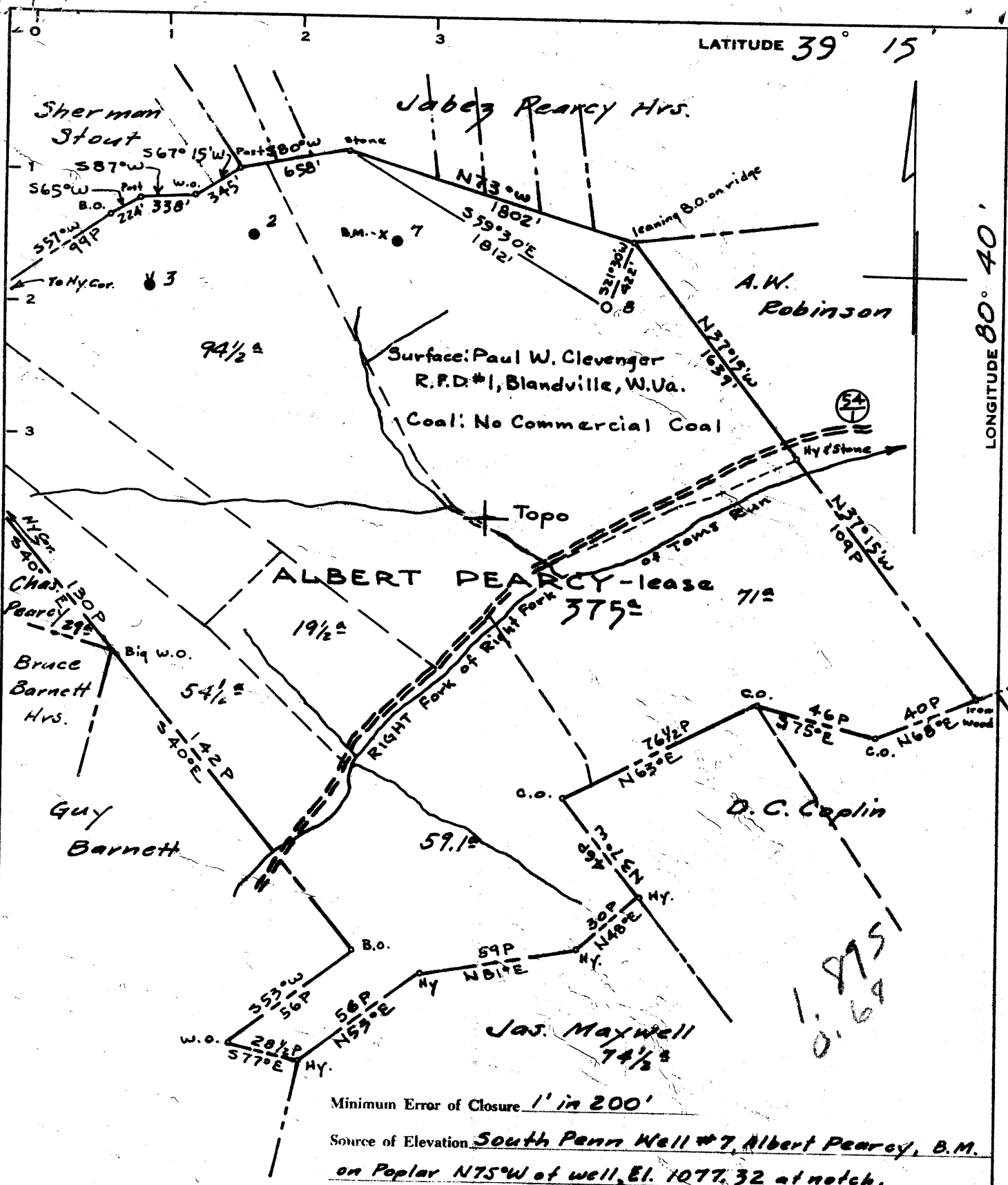


LATITUDE 39° 15'

LONGITUDE 80° 40'



Minimum Error of Closure 1' in 200'

Source of Elevation South Penn Well #7, Albert Pearcy, B.M. on Poplar N75°W of well, El. 1077.32 at notch.

- Fracture
- New Location
- Drill Deeper
- Abandonment

I, the undersigned, hereby certify that this map is correct to the best of my knowledge and belief and shows all the information required by paragraph 6 of the rules and regulations of the oil and gas section of the mining laws of West Virginia.

Signed: *A.C. Wilbert*

Map No. 17 Squares: N S 18 E W 8

Company	SOUTH PENN OIL CO.		
Address	PARKERSBURG, W.Va.		
Farm	ALBERT PEARCY		
Tract	Acres	375	Lease No. 31413 31414
Well (Farm) No.	8	Serial No.	
Elevation (Spirit Level)	1139.38 ground		
Quadrangle	VADIS NW		
County	DODDRIDGE	District	NEW MILTON
Engineer	<i>A.C. Wilbert</i>		
Engineer's Registration No.	2534		
File No.	887	Drawing No.	
Date	MAY 13, 1963 Scale 1" = 800'		

STATE OF WEST VIRGINIA
DEPARTMENT OF MINES
OIL AND GAS DIVISION
CHARLESTON

WELL LOCATION MAP

FILE NO. DOD-975

+ Denotes location of well on United States Topographic Maps, scale 1 to 62,500, latitude and longitude lines being represented by border lines as shown.

- Denotes one inch spaces on border line of original tracing.



STATE OF WEST VIRGINIA
DEPARTMENT OF MINES
OIL AND GAS DIVISION 10

Quadrangle VADIS

Permit No. DOD-975

WELL RECORD

Oil or Gas Well O & G
(KIND)

Company PENNZOIL COMPANY formerly SOUTH PENN OIL COMPANY
Address P. O. Box 1588, Parkersburg, W. Va. -26101
Farm Albert Percy Acres 375
Location (waters) Right Fork of Toms Run
Well No. 8 Elev. 1139.38
District New Milton County Doddridge
The surface of tract is owned in fee by Paul W. Clevenger
R. F. D. #1 Address Blandville, W. Va.
Mineral rights are owned by Lyle B. Hornor & Co.,
Goff Bldg. Address Clarksburg, W. Va.
Drilling commenced May 27, 1963
Drilling completed June 22, 1963
Date Shot - From - To -
With -
Open Flow /10ths Water in No Test Inch
/10ths Merc. in Inch
Volume - Cu. Ft.
Rock Pressure - lbs. hrs.
Oil No Test bbls., 1st 24 hrs.
WELL ACIDIZED -

Casing and Tubing	Used in Drilling	Left in Well	Packers
Size			
16"	18'	18'	Kind of Packer
13			-
10.75"	471'	471'	Size of
8.625"	1681'	681'	
6 3/8"			Depth set
5.5"	2176'	2176'	
3			Perf. top
2			Perf. bottom
Liners Used			Perf. top
			Perf. bottom

CASING CEMENTED 5.5" SIZE 2176 No. Ft. 6 2/63 Date

COAL WAS ENCOUNTERED AT 355 FEET 60 INCHES
FEET INCHES FEET INCHES
FEET INCHES FEET INCHES

WELL FRACTURED July 1, 1963 by Halliburton Company

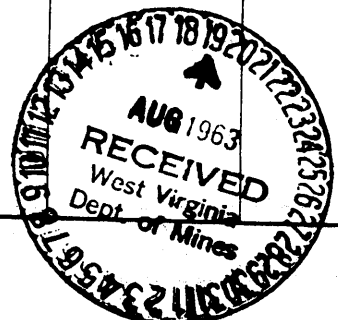
RESULT AFTER TREATMENT Gas - No Test
Oil - 240 Bbls.

ROCK PRESSURE AFTER TREATMENT 270# H. F. O.

Fresh Water - Feet Salt Water - Feet

Formation	Color	Hard or Soft	Top	Bottom	Oil, Gas or Water	Depth	Remarks
Clay			0	20			
Slate			20	50			
Sand			50	105			
Shale			105	130			
Sand			130	160			
Slate			160	170			
Sand			170	195			
Red Rock			195	215			
Sand			215	305			
Slate			305	320			
Shale, Muddy			320	355			
Coal (Show)			355	360			
Shale			360	390			
Red Rock			390	500			
Sand			500	555			
Slate			555	760			
Red Rock			760	800			
Slate & R. Rock			800	1080			
Sand			1080	1090			
Slate			1090	1255			
Sand			1255	1340			
Slate			1340	1475			
Sand			1475	1550			
Slate			1550	1600			
Sand			1600	1610			
Slate			1610	1671			
Maxton			1671	1750			
Slate			1750	1800			
Lime			1800	1850			
Slate			1850	1898			

(over)



Formation	Color	Hard or Soft 10	Top	Bottom	Oil, Gas or Water	Depth Found	Remarks
Sand			1898	1935			
Slate			1935	1955			
Little Lime			-1955	1980			
Blue Monday			1980	1998			
Big Lime			-1998	2056	Oil	1983-1990	Show
Sandy Lime			2056	2077			
Big Injun			2077	2147			
					Oil & Gas	2108-2146	No Test - Big Inj Sand Cored-Hole full of water
Slate			2147	2176			
Total Depth				2176			

Date August 16, 1963

APPROVED PENNZOIL COMPANY formerly SOUTH PENN OIL COMPANY, Owner

By George W. Wilman
George W. Wilman (Title) Manager
Land-Lease Records Department