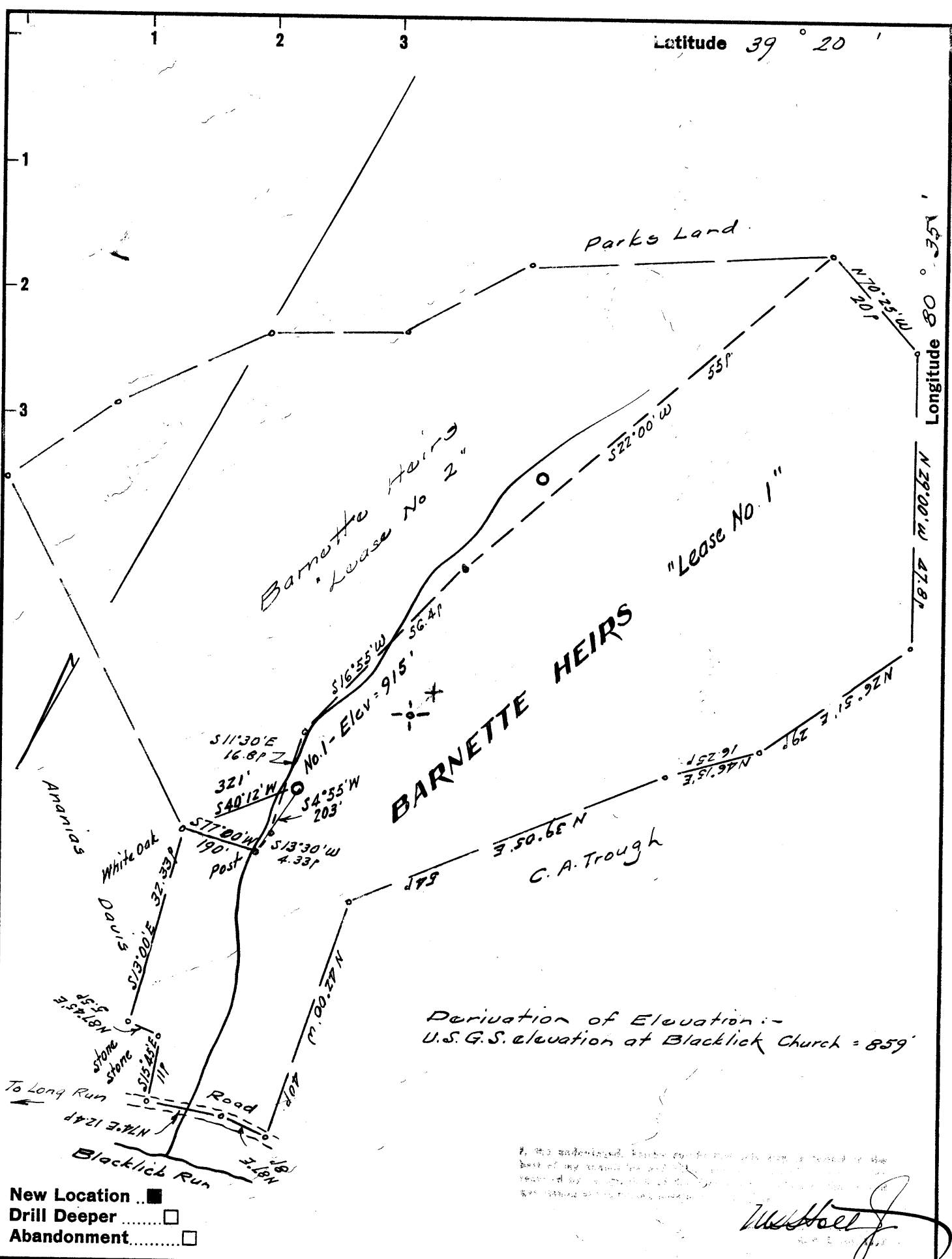


Latitude 39° 20'

Longitude 80° 35'



Derivation of Elevation:-
 U.S.G.S. elevation at Blacklick Church = 859'

I, the undersigned, hereby certify that this map is based on the best of my knowledge and belief, and that I am a duly licensed Professional Engineer in the State of West Virginia.

W. H. Hoel
 W. H. Hoel
 Professional Engineer
 No. 1227

- New Location ..
- Drill Deeper
- Abandonment.....

Company	NATIONAL PRODUCERS
Address	Box 218, Pennsboro, West Va.
Farm	Barnette Heirs (Lease No. 1)
Tract	Acres 40 Lease No.
Well (Farm) No.	One Serial No.
Elevation (Spirit Level)	915
Quadrangle	Centerpoint SC
County	Doddridge District Greenbrier
Engineer	<i>W. H. Hoel</i>
Engineer's Registration No.	1227
File No.	Drawing No.
Date	April 9, 1963 Scale 1" = 200' = 330'

STATE OF WEST VIRGINIA
 DEPARTMENT OF MINES
 OIL AND GAS DIVISION
 CHARLESTON

WELL LOCATION MAP
 FILE NO. Dod-960-*Pennsboro*

+ Denotes location of well on United States Topographic Maps, scale 1 to 62,500, latitude and longitude lines being represented by border lines as shown.

- Denotes one inch spaces on border line of original tracing.