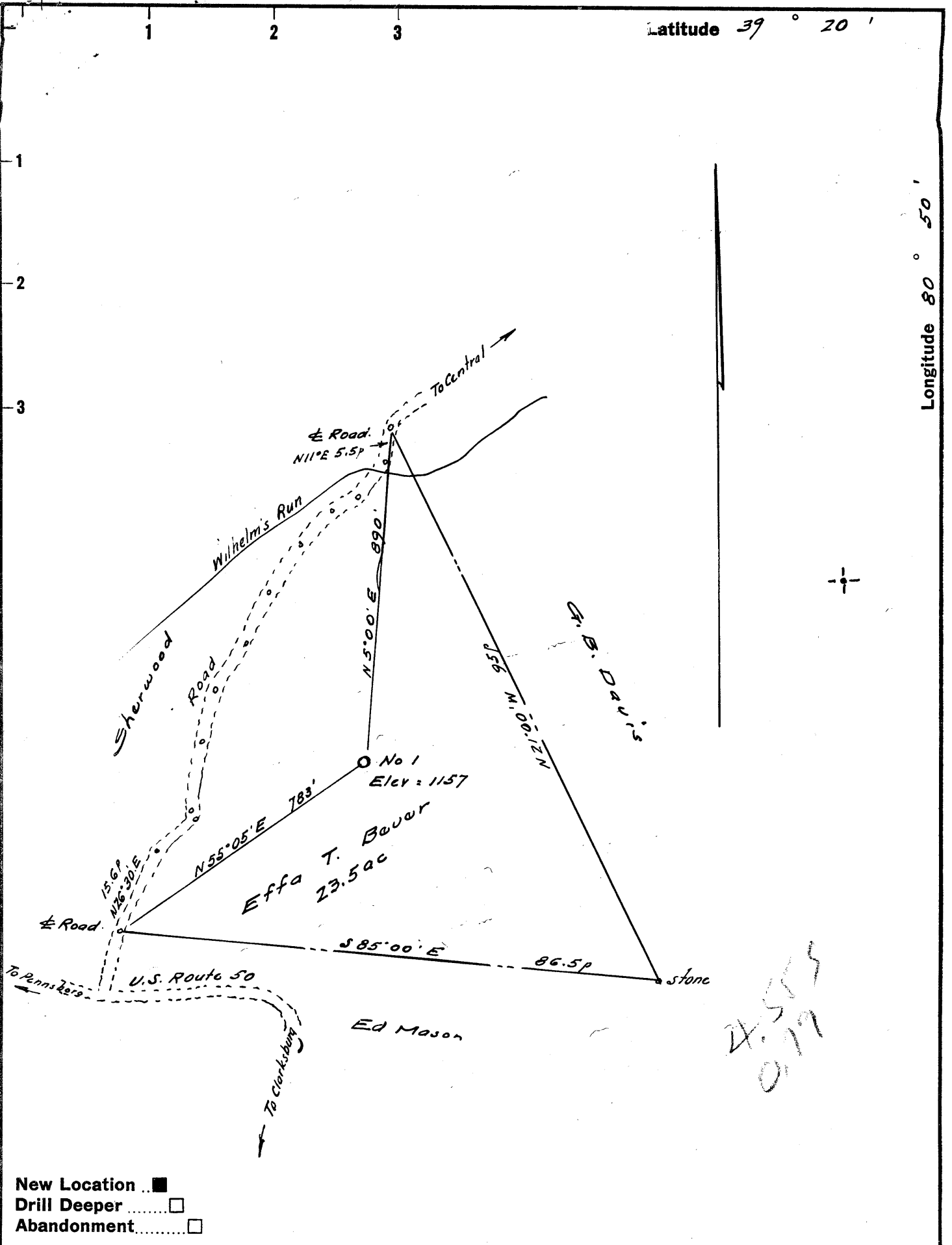


Latitude 39° 20'

Longitude 80° 50'



4-5-65  
0-7-79

- New Location
- Drill Deeper
- Abandonment

Company PETROLEUM PROMOTIONS  
 Address Box 105, Weston, W. Va.  
 Farm Effa T. Bever  
 Tract \_\_\_\_\_ Acres 23.5 Lease No. \_\_\_\_\_  
 Well (Farm) No. One Serial No. \_\_\_\_\_  
 Elevation (Spirit Level) 1157'  
 Quadrangle West Union SC  
 County Doddridge District Central  
 Engineer [Signature]  
 Engineer's Registration No. 1227  
 File No. \_\_\_\_\_ Drawing No. \_\_\_\_\_  
 Date Dec 7, 1962 Scale 1" = 200'

STATE OF WEST VIRGINIA  
 DEPARTMENT OF MINES  
 OIL AND GAS DIVISION  
 CHARLESTON

**WELL LOCATION MAP**  
 FILE NO. Dod-918

+ Denotes location of well on United States Topographic Maps, scale 1 to 62,500, latitude and longitude lines being represented by border lines as shown.

- Denotes one inch spaces on border line of original tracing.

6-6-67



STATE OF WEST VIRGINIA  
DEPARTMENT OF MINES AND  
OIL AND GAS DIVISION

Quadrangle West Union

Permit No. DOD-918

WELL RECORD

Oil or Gas Well Oil- Gas  
(KIND)

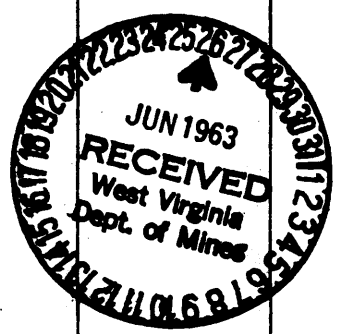
Company Petroleum Promotions, Inc  
Address Box 105 Weston, West Virginia  
Farm Effa T. Bever Acres 23.4  
Location (waters) Wilhelm Run  
Well No. 1 Elev. 1157'  
District Central County Doddridge  
The surface of tract is owned in fee by Effa Bever  
Route 1 Address Greenwood, W. Va.  
Mineral rights are owned by Same as above  
Address \_\_\_\_\_  
Drilling commenced May 17, 1963  
Drilling completed June 13, 1963  
Date Shot \_\_\_\_\_ From \_\_\_\_\_ To \_\_\_\_\_  
With \_\_\_\_\_  
Open Flow /10ths Water in \_\_\_\_\_ Inch  
/10ths Merc. in \_\_\_\_\_ Inch  
Volume No Test Cu. Ft.  
Rock Pressure No Test lbs. \_\_\_\_\_ hrs.  
Oil \_\_\_\_\_ bbls., 1st 24 hrs.  
WELL ACIDIZED \_\_\_\_\_  
WELL FRACTURED 600 Bbls Treated Water, 20,000# Sand Dowell

Casing and Tubing	Used in Drilling	Left in Well	Packers
5 1/2"			Kind of Packer _____
6"	19'	1.19'	Size of _____
8"	337'	Pulled	Depth set _____
7"	1327'	Pulled	Perf. top <u>2244</u>
4 1/2"	1725'	Pulled	Perf. bottom <u>2246</u>
4 1/2"	2342'	Cemented	Perf. top <u>2284</u>
			Perf. bottom <u>2286</u>

CASING CEMENTED 4 1/2" SIZE 2342 No. Fr 6/13/63 Date  
Lakson Cemented with 40 sacks  
COAL WAS ENCOUNTERED AT \_\_\_\_\_ FEET \_\_\_\_\_ INCHES  
\_\_\_\_\_ FEET \_\_\_\_\_ INCHES FEET \_\_\_\_\_ INCHES  
\_\_\_\_\_ FEET \_\_\_\_\_ INCHES FEET \_\_\_\_\_ INCHES

RESULT AFTER TREATMENT 20bbls. 300 MOF  
ROCK PRESSURE AFTER TREATMENT 650# 24 Days  
Fresh Water 287 Feet Salt Water 1710, 1885 Feet

Formation	Color	Hard or Soft	Top	Bottom	Oil, Gas or Water	Depth	Remarks
Clay			00	05			
Red Rock			05	17			
Sand			17	32			
Red Rock			32	37			
Sand			37	41			
Red Rock			41	55			
Shale			55	97			
Sand & Shale			97	115			
Red Rock & Shale			115	199			
Sand			199	220			
Red Rock			220	235			
Lime			235	252			
Sand			252	258			
Red Rock & Lime			258	275			
Red Rock & Shale			275	287			
Sand			287	333	Water	287'	
Lime, Sandy			333	338			
Shale			338	343			
Red Rock			343	370			
Lime			370	395			
Slate			395	411			
Red Rock & Lime			411	455			
Sand			455	464			
Red Rock			464	515			
Lime			515	530			
Red Rock			530	567			
Lime, Sandy			567	572			
Red Rock			572	597			
Sand			597	613			
Shale & Shells			613	630			



Formation	Color	Hard or Soft	Top	Bottom	Oil, Gas or Water	Depth Found	Remarks
Sand			630	670			
Slate			670	680			
Line			680	692			
Red Rock			692	706			
Shale & Shells			706	716			
Red Rock			716	778			
Line			778	800			
Sand			800	832			
Lime & Sand			832	841			
Sand			841	867			
Sand & Slat			867	892			
Sand, Broke			892	895			
Line			895	915			
Slate			915	928			
Sand			928	955			
Sand & Slate			955	938			
Slate & Shells			938	1004			
Line			1004	1028			
Red Rock & Slate			1028	1117			
Line			1117	1121			
Red Rock & Line			1121	1144			
Red Rock			1144	1160			
Sand-			1160	1183			
Sand & Slate			1183	1197			
Line Slate			1197	1217			
Slate			1217	1224			
Slate & Shells			1224	1328			
Line & Sandy			1328	1392			
Slate, Sandy			1392	1418			
Red Rock & Shale			1418	1440			
Sand			1440	1447			
Slate, Sandy			1447	1490			
Sand			1490	1520			
Slate & Shells			1520	1544			
Sand			1544	1610			
Line			1610	1615			
Sand			1615	1635			
Slate & Shells			1635	1680			
Sand			1680	1802			Hole full of water 1710'
Slate & Shells			1802	1845			
Sand			1845	1857			
Slate & Shells			1857	1872			
Sand			1872	1913			Hole full of water 1885'
Slate & Shells			1913	1930			
Sand, Broken			1930	1954			
Slate			1954	1990			
Slate & Shells			1990	2033			
Sand	Brown		2033	2040			
Sand, Broken	White		2040	2043			
Sand	White		2043	2087			
Line, Sandy			2087	2095			
Slate & Shells			2095	2125			
Line			2125	2146			
Shale & Shells			2146	2151			
Line			2151	2186			
Line, Sandy			2186	2256			
Sand			2256	2268			
Line			2268	2285			
Sand			2285	2301			
Slate, Sandy			2301	2316			
Slate & Shells			2316	2342			
Total Depth				2342			

Date \_\_\_\_\_, 19\_\_

APPROVED \_\_\_\_\_, Owner

By \_\_\_\_\_ (Title)