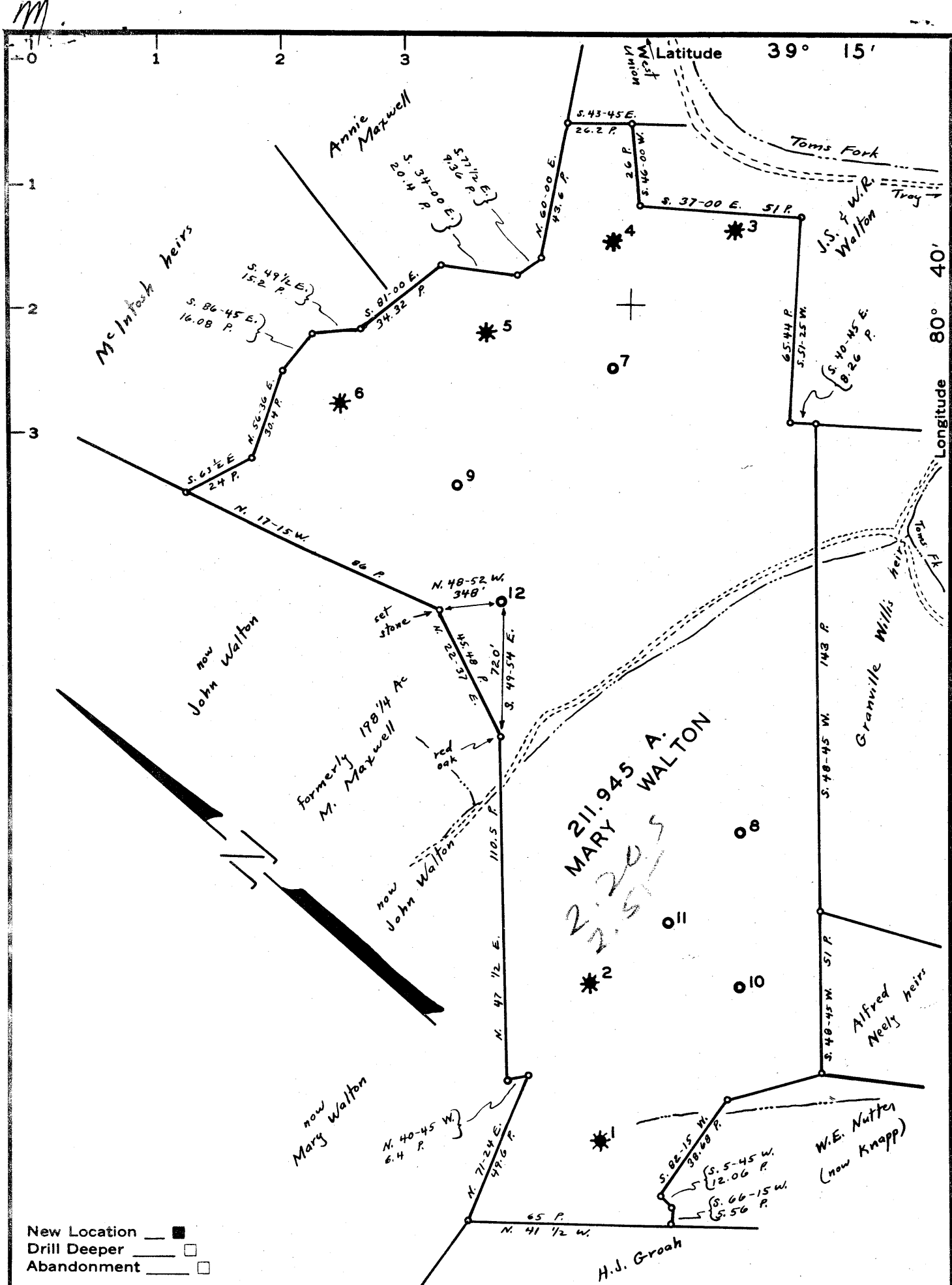


issued 7/31/74

Company ~~FERRELL L. PRIOR~~ *Comden Oil Company*
 Address ~~700 UNION TRUST~~ PARKERSBURG WEST VIRGINIA
 Farm ~~MARY WALTON~~ *30x6*
 Tract _____ Acres 211.945 Lease No. _____
 Well (Farm) No. 12 Serial No. _____
 Elevation (Spirit Level) 1009'
 Quadrangle VADIS, W. VA. NW
 County DODDRIDGE District NEW MILTON
 Engineer M.B. Good
 Engineer's Registration No. IND 4040
 File No. _____ Drawing No. _____
 Date NOV. 1962 Scale 1" = 40 POLES

STATE OF WEST VIRGINIA
 DEPARTMENT OF MINES
 OIL AND GAS DIVISION
 CHARLESTON
WELL LOCATION MAP
 FILE NO. DOD-905-P
 | Denotes location of well on United States Topographic Maps, scale 1 to 62,500, latitude and longitude lines being represented by border lines as shown.
 — Denotes one inch spaces on border line of original tracing.
47-017 SEP 4 1974



New Location
 Drill Deeper
 Abandonment

Company **FERRELL L. PRIOR**
 Address **700 UNION TRUST PARKERSBURG WEST VIRGINIA**
 Farm **MARY WALTON**
 Tract _____ Acres **211.945** Lease No. _____
 Well (Farm) No. **12** Serial No. _____
 Elevation (Spirit Level) **1009'**
 Quadrangle **VADIS, W. VA. NW**
 County **DODDRIDGE** District **NEW MILTON**
 Engineer **M.B. Good**
 Engineer's Registration No. **IND 4040**
 File No. _____ Drawing No. _____
 Date **NOV. 1962** Scale **1" = 40 POLES**

STATE OF WEST VIRGINIA
 DEPARTMENT OF MINES
 OIL AND GAS DIVISION
 CHARLESTON

WELL LOCATION MAP
 FILE NO. **DOD-905**

+ Denotes location of well on United States Topographic Maps, scale 1 to 62,500, latitude and longitude lines being represented by border lines as shown.
 - Denotes one inch spaces on border line of original tracing.

6-6 144



STATE OF WEST VIRGINIA
DEPARTMENT OF MINES
OIL AND GAS DIVISION 3

Quadrangle Vadis

Permit No. Dod-905

WELL RECORD

Oil or Gas Well Oil
(KIND)

Company Prior Oil Company
Address 720 Union Trust Building, Parkersburg
Farm Mary Walton Acres 211.945
Location (waters): Toms Fork
Well No. 12 Elev. 1009
District New Milton County Doddridge
The surface of tract is owned in fee by John Walton
Address West Union
Mineral rights are owned by John Walton
Address West Union
Drilling commenced 3/7/63
Drilling completed 4/7/63
Date Shot From To
With
Open Flow /10ths Water in Inch
/10ths Merc. in Inch
Volume Not taken Cu. Ft.
Rock Pressure Not taken lbs. hrs.
Oil show bbls., 1st 24 hrs.
WELL ACIDIZED 400 gallon

Casing and Tubing	Used in Drilling	Left in Well	Packers
Size			Kind of Packer
16			
13			
10			Size of
8" X 5/8	30	30'	Depth set
6 3/4			
5 3/16			
4 1/2		2142'	Perf. top 2038
2			Perf. bottom 2039 1/2
Liners Used			Perf. top 2101
			Perf. bottom 2102 1/2

CASING CEMENTED 2142 SIZE 4 1/2 No. Ft. 4/7/63 Date
59 sks. cement - DOWELL

COAL WAS ENCOUNTERED AT FEET INCHES
FEET INCHES NONE FEET INCHES
FEET INCHES FEET INCHES

WELL FRACTURED 850 bbls. water
31,000 lbs. sand Drilled with circulating gel.
RESULT AFTER TREATMENT 60 bbls. oil - 24 hrs.
ROCK PRESSURE AFTER TREATMENT 545 - 24 hrs.

Fresh Water Feet Salt Water Feet

Formation	Color	Hard or Soft	Top	Bottom	Oil, Gas or Water	Depth	Remarks
Surface			0	19	No water	recorded drilled w/ rotary.	
Red rock			19	37			
Sand rock			37	51			
Red rock			51	66			
Sand & shale			66	74			
Sand & lime			74	97			
Shale			97	219			
Red rock			219	267			
Sand			267	291			
Lime			291	306			
Shale			306	347			
Shaley lime			347	471			
Shale			471	560			
Sand			560	574			
Sandy shale & lime			574	635			
Shale, lime & shells			635	689			
Shale			689	708			
Red rock			708	863			
Shale			863	929			
Shaley sand			929	1063			
Shale			1063	1192			
Sand			1192	1285			
Shale & sand			1285	1425			
Sand			1425	1505			
Sand			1505	1665			
Shale & sand			1665	1800			
Shale			1800	1925			
Lime			1925	1953			
Sandy lime			1953	2035			
Sand			2035	2040	Oil		



Formation	Color	Hard or Soft	Top β	Bottom	Oil, Gas or Water	Depth Found	Remarks
Sand & sandy lime			2040	2090			
Sand			2090	2110	Oil		
Shale			2110	2150	T.D.		

Date July 12, 1963
 APPROVED Prior Oil Co., Owner
 By Joe M. Laughlin
 (Title)