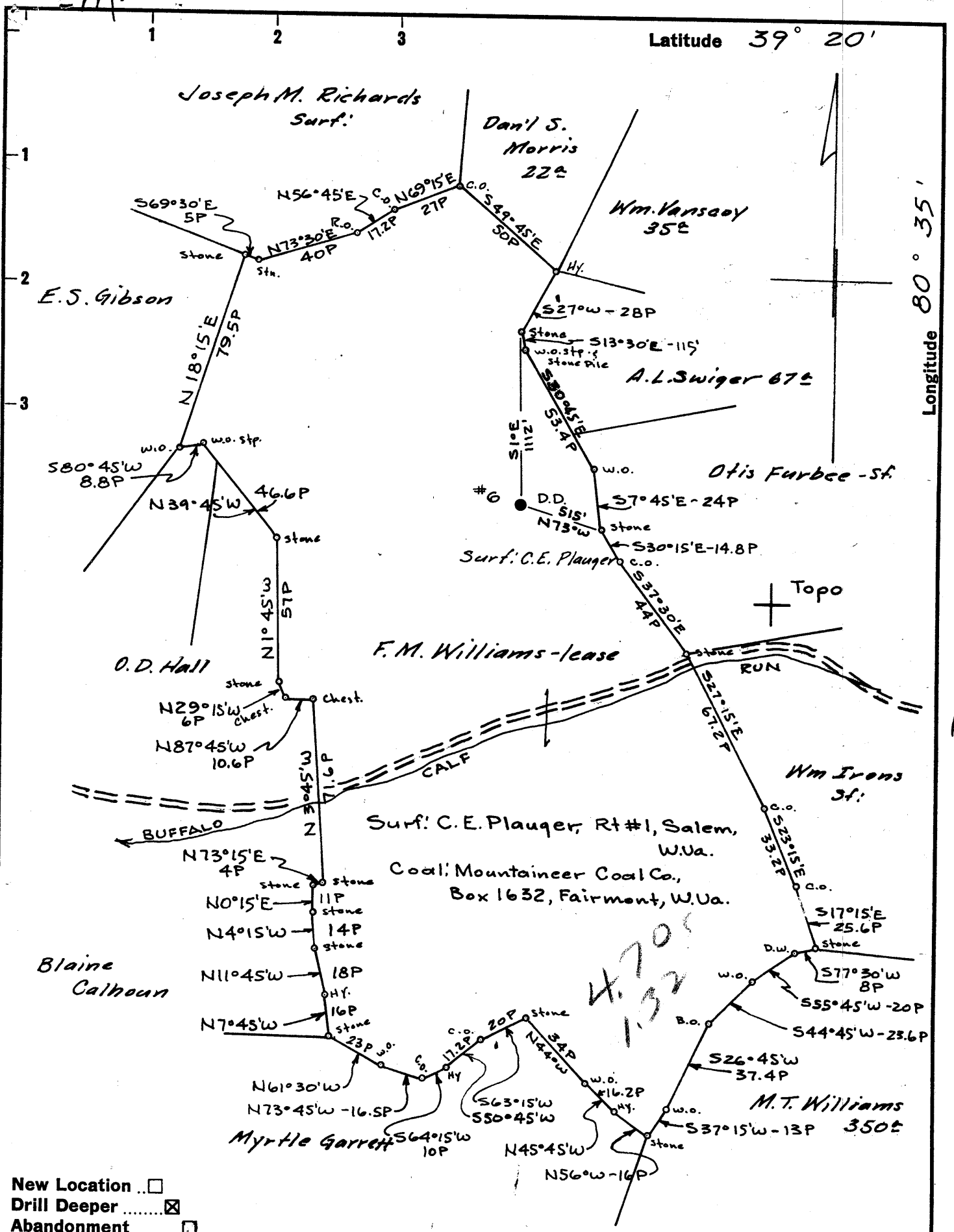


Latitude 39° 20'

Longitude 80° 35'



- New Location ..
- Drill Deeper
- Abandonment.....

MAP N28 S13 E1 W1

Company SOUTH PENN OIL CO.
 Address PARKERSBURG, W.VA.
 Farm F.M. WILLIAMS
 Tract _____ Acres 330 Lease No. 31424
 Well (Farm) No. G.D.D. Serial No. _____
 Elevation (Spirit Level) 1146.75' cas. hd.
 Quadrangle CENTERPOINT SC
 County DODDRIDGE District GREENBRIER
 Engineer A.C. Hilbert
 Engineer's Registration No. 2534
 File No. 788 Drawing No. _____
 Date Oct. 23, 1962 Scale 1" = 800'

STATE OF WEST VIRGINIA
 DEPARTMENT OF MINES
 OIL AND GAS DIVISION
 CHARLESTON

WELL LOCATION MAP
 FILE NO. DOD-892-D

- + Denotes location of well on United States Topographic Maps, scale 1 to 62,500, latitude and longitude lines being represented by border lines as shown.
- Denotes one inch spaces on border line of original tracing.

6-0-145



STATE OF WEST VIRGINIA
DEPARTMENT OF MINES
OIL AND GAS DIVISION

Quadrangle CENTERPOINT

Permit No. DOD-892-Drill Deeper

WELL RECORD

Oil or Gas Well Oil & Gas Shows
(KIND)

Company SOUTH PENN OIL COMPANY
Address P. O. Box 1588, Parkersburg, W. Va.
Farm F. M. Williams Acres 300
Location (waters) Buffalo Calf Run
Well No. 6 - Drill Deeper Elev. 1146.75
District Greenbrier County Doddridge
The surface of tract is owned in fee by C. E. Plauger
Rt. #1 Address Salem, W. Va.
Mineral rights are owned by Sarah J. Whiteman, et al.
Address Salem, W. Va.

Drilling Deeper commenced November 12, 1962
Drilling Deeper completed December 20, 1962

Date Shot - From - To -

With -

Open Flow /10ths Water in Light Show Inch

/10ths Merc. in - Inch

Volume - Cu. Ft.

Rock Pressure Not Taken lbs. hrs.

Oil Light Show bbls., 1st 24 hrs.

WELL ACIDIZED Not acidized

WELL FRACTURED Not fractured

Casing and Tubing	Used in Drilling	Left in Well	Packers
Size			Kind of Packer
16			
13			
10	NO CHANGE IN CASING RECORD		Size of
8 1/4			
6 5/8			Depth set
5 3/16			
3			Perf. top
2			Perf. bottom
Liners Used			Perf. top
			Perf. bottom

CASING CEMENTED - SIZE - No. Ft. - Date -

COAL WAS ENCOUNTERED AT - FEET - INCHES
- FEET - INCHES - FEET - INCHES
- FEET - INCHES - FEET - INCHES

RESULT AFTER TREATMENT

ROCK PRESSURE AFTER TREATMENT

Fresh Water - Feet - Salt Water - Feet -

Formation	Color	Hard or Soft	Top	Bottom	Oil, Gas or Water	Depth	Remarks
Commenced Drilling Deeper in the			Big Injun Sand at 2312'				
Soft Sand			2312	2316			
Hard Sand			2316	2341			
Soft Sand			2341	2357			
					Oil & Gas	2341-2357	Light Show
Big Injun				2357			
Slate			2357	2362			
TOTAL DEPTH				2362			

