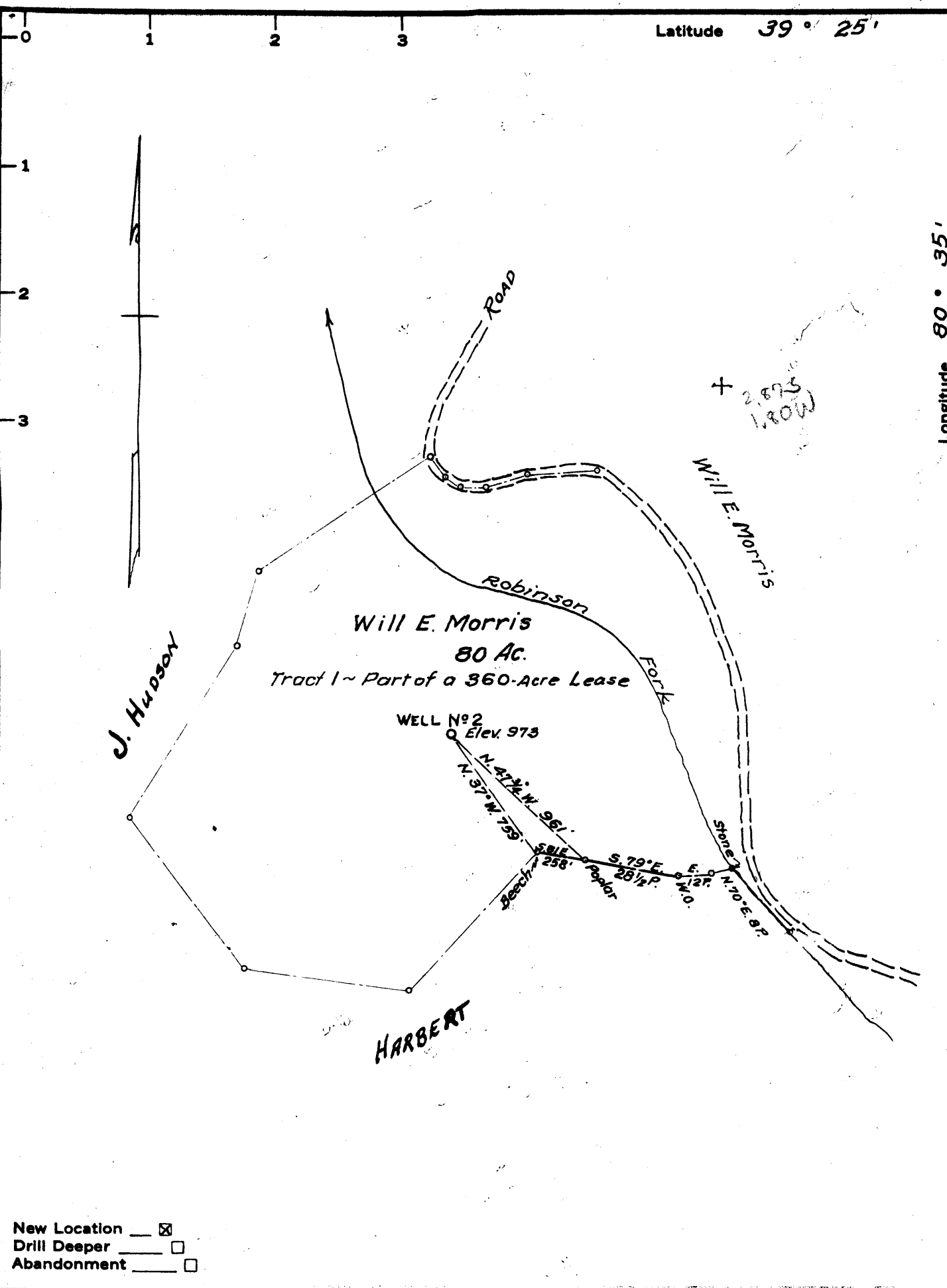


Latitude 39° 25'

Longitude 80° 35'



New Location
 Drill Deeper
 Abandonment

Company S. & R. Oil & Gas Co., James Scott, Agt. 791
 Address 124 Valley St., Salem, W. Va.
 Farm Will E. Morris
 Tract 1 Acres 80 Lease No. _____
 Well (Farm) No. 2 Serial No. _____
 Elevation (Spirit Level) 973
 Quadrangle Centerpoint CC
 County Doddridge District McClellan
 Engineer Parker E. Peters
 Engineer's Registration No. 485
 File No. _____ Drawing No. _____
 Date Oct. 4, 1962 Scale 1" = 40 P.

STATE OF WEST VIRGINIA
 DEPARTMENT OF MINES
 OIL AND GAS DIVISION
 CHARLESTON

WELL LOCATION MAP

FILE NO. Doo-884 1060 12275

CANC - O&G DIV AN Rpt 1962, tabs 5
 + Denotes location of well on United States
 Topographic Maps, scale 1 to 62,500, lat-
 itude and longitude lines being represented
 by border lines as shown.

- Denotes one inch spaces on border line
 of original tracing.