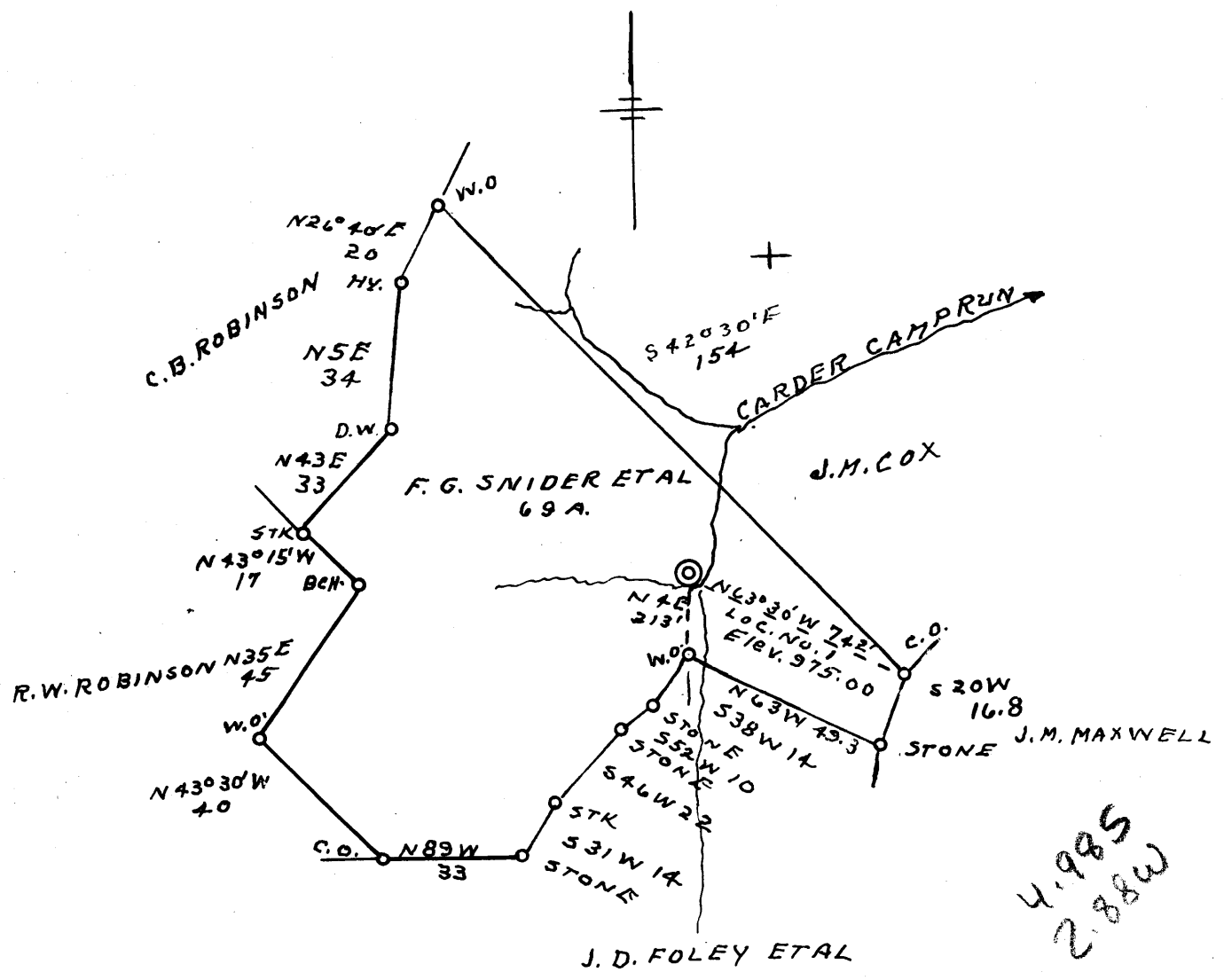


Latitude  $39^{\circ} 15'$   
 Longitude  $80^{\circ} 40'$



- New Location .
- Drill Deeper . . . .
- Redrill . . . . .
- Abandonment . . . . .

Company RALPH HAMBLIN  
 Address 111 - 1174 ST PARKERSBURG, W. VA.  
 Farm F. G. SNIDER ETAL  
 Tract \_\_\_\_\_ Acres 69 Lease No. \_\_\_\_\_  
 Well (Farm) No. 1 Serial No. \_\_\_\_\_  
 Elevation (Spirit Level) 975.00  
 Quadrangle VADIS NW  
 County DODDRIDGE District NEW MILTON  
 Engineer L. J. Dye  
 Engineer's Registration No. 804  
 File No. \_\_\_\_\_ Drawing No. \_\_\_\_\_  
 Date 8-3-62 Scale 1" = 40 POLES

STATE OF WEST VIRGINIA  
 DEPARTMENT OF MINES  
 OIL AND GAS DIVISION  
 CHARLESTON

**WELL LOCATION MAP**  
 FILE NO. DOD-853

+ Denotes location of well on United States Topographic Maps, scale 1 to 62,500, latitude and longitude lines being represented by border lines as shown.

— Denotes one inch spaces on border line of original tracing.