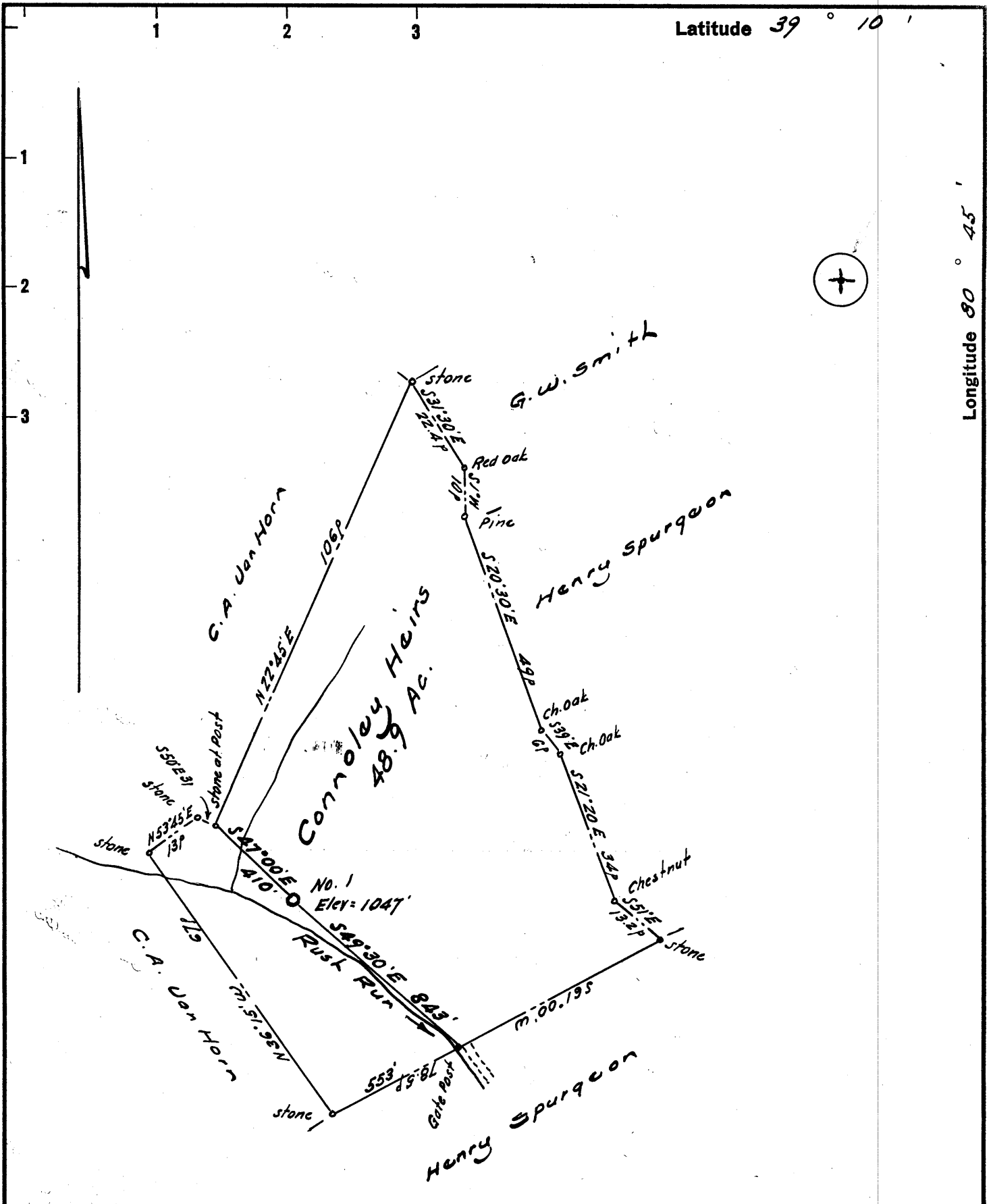


Latitude 39° 10'

Longitude 80° 45'



- New Location ..
- Drill Deeper .....
- Abandonment.....

Company Harry Kalish 220

Address to Mid-Atlantic Eng. Co. 212 Nelson Bldg Charleston W. Va.

Farm Connoley Heirs

Tract \_\_\_\_\_ Acres 48.9 Lease No. \_\_\_\_\_

Well (Farm) No. One Serial No. \_\_\_\_\_

Elevation (Spirit Level) 1047

Quadrangle Halbrook EC

County Doddridge District Cove

Engineer W. H. Hoel Jr.

Engineer's Registration No. 1227

File No. \_\_\_\_\_ Drawing No. \_\_\_\_\_

Date June 1962 Scale 1" = 300' = 495'

STATE OF WEST VIRGINIA  
DEPARTMENT OF MINES  
OIL AND GAS DIVISION  
CHARLESTON

**WELL LOCATION MAP**

FILE NO. Dod-822

eng. O & G Div. An. Rpt. 1962, Table 5

+ Denotes location of well on United States Topographic Maps, scale 1 to 62,500, latitude and longitude lines being represented by border lines as shown.

- Denotes one inch spaces on border line of original tracing.