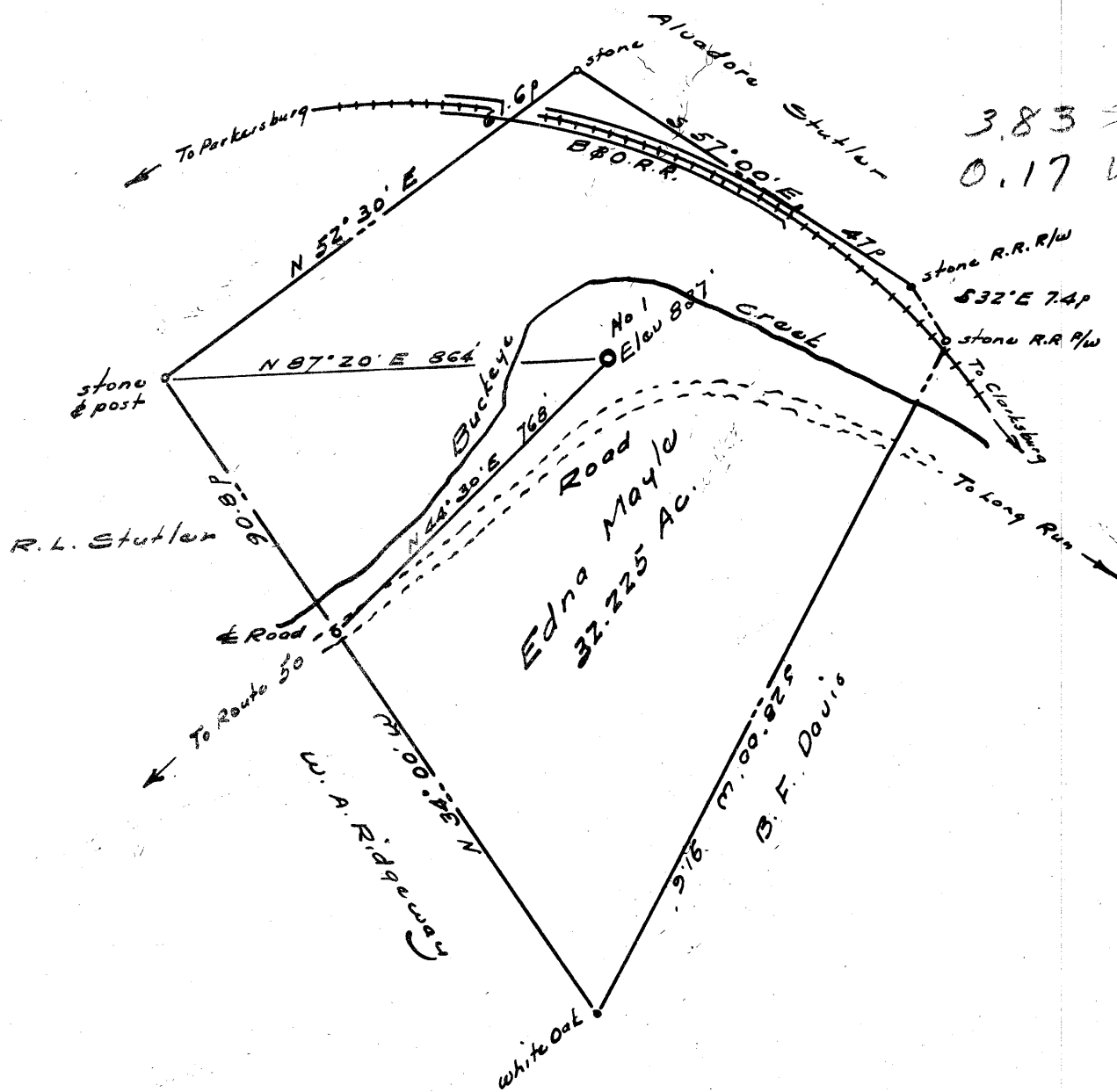


Latitude 39° 20'

Longitude 80° 40'



New Location
 Drill Deeper
 Abandonment

Company FRANK MOORE & JAS. NORRIS
 Address Glennville, West Va.
 Farm Edna Mayle
 Tract _____ Acres 32.225 Lease No. _____
 Well (Farm) No. One Serial No. _____
 Elevation (Spirit Level) 837 ok - K10 10/30/62
 Quadrangle Centerpoint SW 75' tops
 County Doddridge District Grant
 Engineer W. H. H. H.
 Engineer's Registration No. 1227
 File No. _____ Drawing No. _____
 Date June 1962 Scale 1" = 200' = 330'

STATE OF WEST VIRGINIA
 DEPARTMENT OF MINES
 OIL AND GAS DIVISION
 CHARLESTON

WELL LOCATION MAP
 FILE NO. Dod-814

+ Denotes location of well on United States Topographic Maps, scale 1 to 62,500, latitude and longitude lines being represented by border lines as shown.

- Denotes one inch spaces on border line of original tracing.



STATE OF WEST VIRGINIA
DEPARTMENT OF MINES
OIL AND GAS DIVISION 8

Quadrangle Centerpoint

Permit No. Doddridge 814

WELL RECORD

Oil or Gas Well GAS

Company <u>Frank Moore and James Norris</u>	Casing and Tubing	Used in Drilling	Left in Well	Packers None
Address <u>Glenville West Virginia</u>				
Farm <u>Edna Mayle et al</u> Acres <u>33</u>	Size 16 13	1226	1226	Kind of Packer
Location (waters) <u>Buckeye Crk</u> <u>837' kln</u>				
Well No. <u>One</u> Elev. <u>810</u>	10	1800	1800	Size of
District <u>Grant</u> County <u>Doddridge</u>				
The surface of tract is owned in fee by <u>Edna E. Mayle</u>	8 1/4	6 5/8	1226	Depth set
Address <u>Salem W. Va.</u>				
Mineral rights are owned by <u>Edna E. Mayle et al</u>	5 3/16	4 1/2	1800	1800
& <u>Jno Whalen hrs</u> Address <u>Salem W. Va.</u>				
Drilling commenced <u>June 13, 1962</u>	3	2	Tubing	1690
Drilling completed <u>July 13, 1962</u>				
Date Shot From To	Liners Used			Perf. top <u>1680</u>
With				
Open Flow <u>100</u> /10ths Water in <u>and</u> Inch	CASING CEMENTED <u>6 5/8</u> SIZE <u>1226</u> No. Ft. <u>1226</u> Date			Perf. bottom <u>1690</u>
Volume <u>388,740</u> Cu. Ft.				
Rock Pressure <u>12</u> lbs. hrs.	<u>4 1/2</u> " cemented at 1800			
Oil <u>None</u> bbls., 1st 24 hrs.	COAL WAS ENCOUNTERED AT <u>316-320</u> FEET <u>18</u> broken INCHES			
WELL ACIDIZED <u>None</u>	FEET INCHES FEET INCHES			

WELL FRACTURED By Halliburton Co of Parkersburg W. Va. At 1678 to 1692 and 1714 to 1718 and 1730 to 1736

RESULT AFTER TREATMENT

ROCK PRESSURE AFTER TREATMENT 11.0

Fresh Water _____ Feet Salt Water _____ Feet

Formation	Color	Hard or Soft	Top	Bottom	Oil, Gas or Water	Depth	Remarks
(SEE COPY OF LOG HERETO ATTACHED)							1757

Sample and Drillers Log

Frank Moore & James Norris - # 1 - Edna Mayle Et Al. Permit: Dod.814
 On waters of Buckeye Creek- Grant Dist. Doddridge Co. West Virginia.
 Commenced, June 13, 1962 - Completed July 13, 1962 . T.D. 1800
 Elevation 818 Altimeter. 10 inch casing set at 70 ft. 8 inch csg
 set at 381 ft. 7 inch csg set at 1226 feet. 4½ inch casing set 1800 ft
 Production _____ Gas

- 0 - 150 no record. Fresh water at 55 feet
 150- 160 Fine dark sand and red shale
 160- 170 hard dark gray lime and pyrites
 170-200 coarse sandy lime and shale breaks
 200-225 fine black shaley sand
 225- 245 brown and gray coarse sandy lime
 245-250 coarse light gray sand
 250-270 fine to coarse white sand
 270-300 fine light gray sand traces of lignite
 300-308 whitish gray crystalline sand
 318-320 Fine gray sand with broken streaks of Coal- (Pittsburgh coal)
 320-330 Greenish Gray coarse shaley sand
 330-340 Gray shaley lime, coarse - pyrites
 340-350 Coarse brown- gray sandy shale and traces of red shale
 350-360 white sticky shale, chunky calcareous
 360-380 coarse whitish gray crystal sand and thin stracks lime
 380- 390 Coarse Brown gray and dark hard lime
 390-410 Med yellow clay & gray & red sand rock
 410-430 variegated coarse shales & fine dark arenaceous ss lime
 430-450 Gray shale chunky and calcareous
 450-480 med red sand rock
 480-500 Greenish gray calcareous shale, arenaceous and coarse
 500-510 Red sand rock and med greenish gray shale
 510-530 fine light gray and red sand rock
 530-550 coarse light gray and green shale calcareous.
 550-560 Fine red sand rock
 560-594 chunky dark gray sandy lime, calcareous
 594-596 lignitic coal- correlates to 1 st Freeport coal
 596-610 dark to light gray sandy shale, streaks red and yellow rock
 610-620 Gray soft chunky shale very calcareous
 620-635 red and green shale arenaceous and calcareous
 635-640 Fine gray and red sandstone
 640-660 fine to coarse gray & red sand, and yellow rock
 660-680 coarse gray sandy lime, yellow sand- LITTLE DUNKARD TOP
 680-705 Fine red, brown, yellow gray sand
 705-710 Blue gray sandy lime streaks clay
 710-720 coarse variegated sandy shales, calcareous
 720-750 Fine gray sandy lime and calcareous shale streaks
 750-760 dark gray chunky sandy dolomite
 760-770 black sandy dolomite fine to med
 770-785 Med Gray sandy lime
 785-790 Broken lignitic coal and shaley - 2 nd FREEPORT COAL ZONE
 790-800 Coarse dark to light gray sandy lime, streaks soft laminated shale
 800-842 Coarse whitish gray sand - BIG DUNKARD
 842-860 Dark shale very calcareous
 860-865 Chunky gray rotten sandy shale- caving material
 865-870 Med Sandy lime rock- gray
 870-900 Med Dark gray soft shale, arenaceous and calcareous
 900-910 Balck shale and broken sandy lime
 910- 1005 Whitish gray coarse sand- Top SO CALLED GAS SAND ZONE.(NS)
 1005-1020 Coarse gray sandy shale
 1020- 1030 Med brown to gary sand stone
 1030-1042 dark gray fine sandy lime- slatey and flaky shale streaks.



Moore & Norris # 1 Mayle - Grant Dist- Doddridge Co W.Va.

1042-1045 light gray oolitic med sand- Top 1 st SALT SAND
 1045-1068 Hard light brown & ### grayish white sand. Med . SPOTS OIL
 1068-1070 Black shale, laminated
 1070-1080 Coarse hard Gray tan sand
 1080-1090 " green gray brown sandy conglomerate
 1090-1100 " Dark sandy shale streaks of lignite
 1100-1120 fine dark and brown sandy shale
 1120-1150 Coarse whitish gray sand oolitic
 1150-1160 coarse lignitic shale
 1160-1180 coarse dark sandy lime, streaks lignitic shale, mica. over
 1180-1218 coarse whitish gray hard sand- water sand at base, 100# ft nite
 1218-1225 coarse hard white crystalline angular sand
 1225-1230 dark gray sand stone- breaks brown rock and lignitic shale
 1230-1240 Black gray sand thin streaks lignitic shale
 1240-1245 Hard dark gray sand thin shells shaley lime, lots mica frag.
 1245-1250 Fine tan to gray hard lime, arenaceous
 1250-1260 Hard dark gary sandy lime
 1260-1280 fine to coarse tan gary sandy lime and streaks thin black shale
 1280-1295 Med Gray sand, limey and hard
 1295-1320 coarse tan-gray green sandy lime- thin breaks black shale
 1320-1332 coarse balck gray quartzitic sand, little lime
 1332- 1335 coarse white crystalline sand
 1335-1350 Black shale- gray and brown hard sand
 1350-1355 Dark to light gray greenish sand very fine and hard
 1355-1360 Brown and gary sandy lime- fine and hard
 1360-1405 Whitish gray hard crystalline sand- 3 rd SALT SAND.
 1405-1450 coarse hard dark gray sandy shale-(Top Mississippi system)
 1450-1460 fine dark gray sandy shale
 1460-1475 coarse black shale and arenaceous streaks
 1475-1490 Med. Greenish gray sand
 1490-1495 Med sandy lime gray
 1495-1510 Red sand rock & streaks gray lime
 1510-1520 coarse red & gray sandy shale
 1520-1540 fine silty red sand and greenish gray sandy lime
 1540-1550 Red and gray sandy shale
 1550-1555 Fine grayish sandy lime - MAXTON SAND ZONE
 1555-1560 Red Shale
 1560-1565 Red and Gray sandy shale
 1565-1590 Fine dark gray-brown & black lime, chert and arenaceous streaks
 1590-1595 Fine brown and gray lime.
 1595-1597 Black shale coarse flakey, calcareous- PENCIL CAVE
 1597-1615 Red & greenish Gary shale streaks of lime
 1615-1650 Tan-Gray hard lime, med, cherty- (drilled 40 ft in 12 hours)
 1650-1660 coarse flakey hard tan gray lime- arenaceous, dolomitic shale
 1660-1668 Med tan gray hard lime specks pf white sand.
 1668- 1680 Fine very hard light gray sandstone- conglomerate streaks lime
 1680-1690 light gray quartzitic sand-(GAS SHOW) / TOP BIG INJUN ZONE)
 1690-1720 Fine hard white to tan quartzitic sand - gas at 1705
 1720-1752 Med to coarse tan-gray sand- calcareous, pyrite. GAS @ 1730
 1752-1757 Lime shells, sandy, dark dolomitic shale BASE BIG INJUN
 1757-1770 Med Gray dolomitic shale sandy
 1770-1783 Coarse gray dolomitic shale sandy
 1783-1800 coarse Black gray dolomitic shale, arenaceous and thin lime shell

Total depth.

Sample and Drillers Log

Frank Moore & James Norris - # 1 - Edna Mayle Et Al. Permit: Dod.814
 On waters of Buckeye Creek- Grant Dist. Doddridge Co. West Virginia.
 Commenced, June 13, 1962 - Completed July 13, 1962 . P.D. 1800
 Elevation 818 Altimeter. 10 inch casing set at 70 ft. 8 inch csg
 set at 381 ft. 7 inch csg set at 1226 feet. 4½ inch casing set 1800 ft
 Production 250000 csg Gas

- 0 - 150 no record. Fresh water at 55 feet
- 150- 160 fine dark sand and red shale
- 160- 170 hard dark gray lime and pyrites
- 170-200 coarse sandy lime and shale breaks
- 200-225 fine black shaley sand
- 225- 245 brown and gray coarse sandy lime
- 245-250 coarse light gray sand
- 250-270 fine to coarse white sand
- 270-300 fine light gray sand traces of lignite
- 300-318 whitish gray crystalline sand
- 318-320 Fine gray sand with broken streaks of Coal- (Pittsburgh coal)
- 320-330 Greenish Gray coarse shaley sand
- 330-340 Gray shaley lime, coarse - pyrites
- 340-350 Coarse brown- gray sandy shale and traces of red shale
- 350-360 white sticky shale, chunky calcareous
- 360-380 coarse whitish gray crystal sand and thin stracks lime
- 380- 390 Coarse Brown gray and dark hard lime
- 390-410 Med yellow clay & gray & red sand rock
- 410-430 variegated coarse shales & fine dark arenaceous ~~33~~ lime
- 430-450 Gray shale chunky and calcareous
- 450-480 med red sand rock
- 480-500 Greenish gray calcareous shale, arenaceous and coarse
- 500-510 Red sand rock and med greenish gray shale
- 510-530 fine light gray and red sand rock
- 530-550 coarse light gray and green shale calcareous.
- 550-560 fine red sand rock
- 560-594 chunky dark gray sandy lime, calcareous
- 594-596 lignitic coal- correlates to 1 st Freeport coal
- 596-610 dark to light gray sandy shale, streaks red and yellow rock
- 610-620 Gray soft chunky shale very calcareous
- 620-635 red and green shale arenaceous and calcareous
- 635-640 fine gray and red sandstone
- 640-660 fine to coarse gray & red sand, and yellow rock
- 660-680 coarse gray sandy lime, yellow sand- LITTLE DUNKARD TOP
- 680-705 fine red, brown, yellow gray sand
- 705-710 Blue gray sandy lime streaks clay
- 710-720 coarse variegated sandy shales, calcareous
- 720-750 fine gray sandy lime and calcareous shale streaks
- 750-760 dark gray chunky sandy dolomite
- 760-770 black sandy dolomite fine to med
- 770-785 Med Gray sandy lime
- 785-790 Broken lignitic coal and shaley - 2 nd FREE PORT COAL ZONE
- 790-800 Coarse dark to light gray sandy lime, streaks soft laminated shal
- 800-842 Coarse whitish gray sand - BIG DUNKARD
- 842-860 Dark shale very calcareous
- 860-865 chunky gray rotten sandy shale- caving material
- 865-870 Med Sandy lime rock- gray
- 870-900 Med Dark gray soft shale, arenaceous and calcareous
- 900-910 Black shale and broken sandy lime
- 910- 1005 Whitish gray coarse sand- Top SO CALLED GAS SAND ZONE.(AS)
- 1005-1020 Coarse gray sandy shale
- 1020- 1030 Med brown to gary sand stone
- 1030-1042 dark gray fine sandy lime- slately and flaky shale streaks.

Moore & Norris / 1 Mayle - Grant Dist- Doddridge Co W.Va.

- 1042-1045 light gray oolitic med sand- Top 1 st SALT SAND
 1045-1068 hard light brown & gary grayish white sand. Med . SPOTS OIL
 1068-1070 Black shale, laminated
 1070-1080 Coarse hard Gray tan sand
 1080-1090 " green gray brown sandy conglomerate
 1090-1100 " Dark sandy shale streaks of lignite
 1100-1120 fine dark and brown sandy shale
 1120-1150 Coarse whitish gray sand oolitic
 1150-1160 coarse lignitic shale
 1160-1180 coarse dark sandy lime, streaks lignitic shale, mica. over
 1180-1218 coarse whitish gray hard sand- water sand at base, 100# ft nite
 1218-1225 coarse hard white crystalline angular sand
 1225-1230 dark gray sand stone- breaks brown rock and lignitic shale
 1230-1240 Black gray sand thin streaks lignitic shale
 1240-1245 hard dark gray sand thin shells shaley lime, lots mica frag.
 1245-1250 Fine tan to gray hard lime, arenaceous
 1250-1260 Hard dark gary sandy lime
 1260-1280 fine to coarse tan gary sandy lime and streaks thin black shale
 1280-1295 Med Gray sand, limey and hard
 1295-1320 coarse tan-gray green sandy lime- thin breaks black shale
 1320-1332 coarse balck gray quartzitic sand, little lime
 1332- 1335 coarse white crystalline sand
 1335-1350 Black shale- gray and brown hard sand
 1350-1355 Dark to light gray greenish sand very fine and hard
 1355-1360 Brown and gary sandy lime- fine and hard
 1360-1405 Whitish gray hard crystalline sand- 3 rd SALT SAND.
 1405-1450 coarse hard dark gray sandy shale-(Top Mississippi system)
 1450-1460 fine dark gray sandy shale
 1460-1475 coarse black shale and arenaceous streaks
 1475-1490 med. greenish gray sand
 1490-1495 med sandy lime gray
 1495-1510 Red sand rock & streaks gray lime
 1510-1520 coarse red & gray sandy shale
 1520-1540 fine silty red sand and greenish gray sandy lime
 1540-1550 Red and gray sandy shale
 1550-1555 Fine grayish sandy lime - MAXTON SAND ZONE
 1555-1560 Red Shale
 1560-1565 Red and Gray sandy shale
 1565-1590 Fine dark gray-brown & black lime, chert and arenaceous streaks
 1590-1595 Fine brown and gray lime.
 1595-1597 Black shale coarse flakey, calcareous- PENCIL CAVE
 1597-1615 Red & greenish Gary shale streaks of lime
 1615-1650 Tan-Gray hard lime, med, cherty- (drilled 40 ft in 12 hours)
 1650-1660 coarse flakey hard tan gray lime- arenaceous, dolomitic shale
 1660-1668 Med tan gray hard lime specks pf white sand.
 1668- 1680 Fine very hard light gray sandstone- conglomerate streaks lime
 1680-1690 light gray quartzitic sand-(GAS SHOW) (TOP BIG INJUN IONE)
 1690-1720 Fine hard white to tan quartzitic sand - gas at 1705
 1720-1752 Med to coarse tan-gray sand- calcareous, pyrite. GAS @ 1730
 1752-1757 Lime shells, sandy, dark dolomitic shale BASE BIG INJUN
 1757-1770 Med Gray dolomitic shale sandy
 1770-1783 Coarse gray dolomitic shale sandy
 1783-1800 coarse Black gray dolomitic shale, arenaceous and thin lime shell

Total depth.