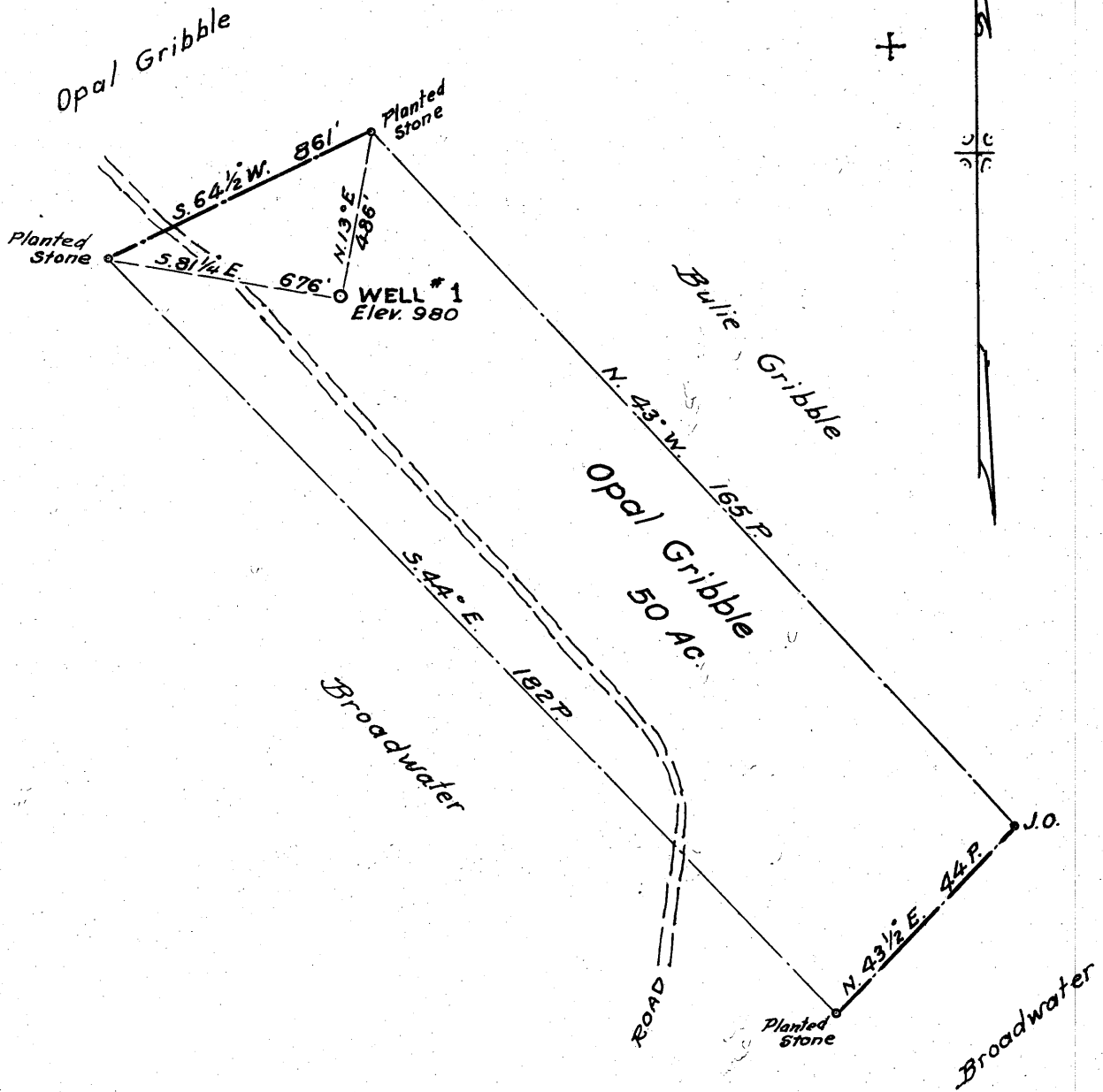


Latitude 39° 15'

Longitude 80° 50'



New Location
 Drill Deeper
 Abandonment

7.29
1.83

Company Jewel Oil Co, W.T Wright, Agt.
 Address 1118 Offner St, Portsmouth, Ohio
 Farm Opal Gribble
 Tract 1 Acres 50 Lease No. _____
 Well (Farm) No. 1 Serial No. _____
 Elevation (Spirit Level) 980
 Quadrangle Holbrook NC
 County Doddridge District Southwest
 Engineer Parker E. Peters
 Engineer's Registration No. 485
 File No. _____ Drawing No. _____
 Date May 30, 1962 Scale 1" = 30 P.

STATE OF WEST VIRGINIA
 DEPARTMENT OF MINES
 OIL AND GAS DIVISION
 CHARLESTON

WELL LOCATION MAP
 FILE NO. Doo-813

+ Denotes location of well on United States Topographic Maps, scale 1 to 62,500, latitude and longitude lines being represented by border lines as shown.

- Denotes one inch spaces on border line of original tracing.

6-6-63



STATE OF WEST VIRGINIA
DEPARTMENT OF MINES
OIL AND GAS DIVISION 12

Quadrangle Holbrook

Permit No. DCD-813

WELL RECORD

Oil or Gas Well Oil Well
(KIND)

Gas show

Company Jewel Oil & Gas Co.
Address 1118 Offnere St. Portsmouth, Ohio
Farm Opal Gribble Acres 50
Location (waters) Sugar Cap Run
Well No. 1 Elev. 980
District Southwest County Doddridge
The surface of tract is owned in fee by Opal Gribble
Address Oxford, W. Va.
Mineral rights are owned by Opal Gribble ET. AL.
Address Oxford, W. Va.
Drilling commenced June 12, 1962
Drilling completed July 9, 1962
Date Shot From To
With
Open Flow /10ths Water in Inch
/10ths Merc. in Inch
Volume Cu. Ft.
Rock Pressure lbs. hrs.
Oil bbls., 1st 24 hrs.
WELL ACIDIZED
WELL FRACTURED July 13, 1962 1000 bbl water frac 27,000 lb. 20-40 frac sand

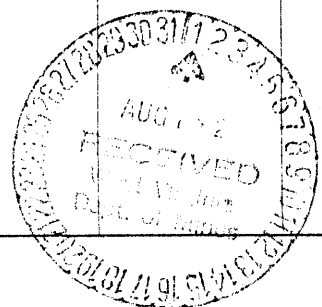
Casing and Tubing	Used in Drilling	Left in Well	Packers
Size			Kind of Packer
16			
13			
10	362	0	Size of
8 1/4	1156	0	
6 3/8			Depth set
5 3/16			
4 1/2"	2102	2102	Perf. top
2			Perf. bottom
Liners Used			Perf. top
			Perf. bottom

CASING CEMENTED 4 1/2 SIZE 2102 No. Ft. 7-10-62 Date
75 sks. cement & 1 aquagel-LAWSON

COAL WAS ENCOUNTERED AT FEET INCHES
FEET INCHES FEET INCHES
FEET INCHES FEET INCHES

RESULT AFTER TREATMENT 100 M Gas 10 bbl Oil
ROCK PRESSURE AFTER TREATMENT 420 lb.
Fresh Water 50' Feet 115 Salt Water Feet 1480

Formation	Color	Hard or Soft	Top	Bottom	Oil, Gas or Water	Depth	Remarks
Top Soil			0	5			
Bed Rock			5	25			
Slate			25	50			
Sand			50	115	water		
Red Rock			115	125	small		
Slate			125	140			
Sand			140	145	water		
Slate & Red Rock			145	160	small		
Slate & Shell			160	205			
Sand			205	220			
Red Rock			220	245			
Sand			245	270			
Red Rock			270	278			
Slate			278	305			
Sand			305	330			
Slate			330	405	water		
Sand			405	440	small		
Broken Lime			440	451			
Pink Rock			451	530			
Slate & Shells			530	593			
Lime			593	597			
Slate			597	660			
Lime			660	675			
Slate			675	700			
Lime			700	712			
Slate & Shells			712	730			
Red Rock			730	734			
Slate			734	750			
Pink Rock			750	765			



Formation	Color	Hard or Soft	Top <i>12</i>	Bottom	Oil, Gas or Water	Depth Found	Remarks
Black Slate			765	768			
Lime			768	778			
Slate			778	790			
Pink Rock			790	865			
Sand			865	887	Little Dunkard		
Slate			887	900			
Lime			900	918			
Slate			918	935			
Pink Rock			935	940			
Sandy Lime			940	950			
Slate & Shells			950	990			
Pink Rock			990	1015			
Slate			1015	1044			
Sand			1044	1062	Big Dunkard	1 bbl. water per hr.	
Slate			1062	1156			
Sand			1156	1204	Show Oil	1186	
Slate			1204	1325	Show Gas	1190	
Sand			1325	1350			
Slate & Lime			1350	1450			
Slate & Sand			1450	1590			
Sand			1590	1755			
Slate Sand			1755	1876	Show Oil & Gas	1825-1836	
Lime			1876	1890			
Sand			1890	1905	Oil	1890-1905	
Shale			1905	1910			
Sand			1910	1915			
Lime			1915	1920	Little Lime		
Sand			1920	1945			
Lime			1945	2031	Big Lime		
Sand			2031	2069	Big Injun		
Slate			2069	2102			

Date July 30, 1962

APPROVED Jewel Oil & Gas, Owner

By [Signature]
(Title)