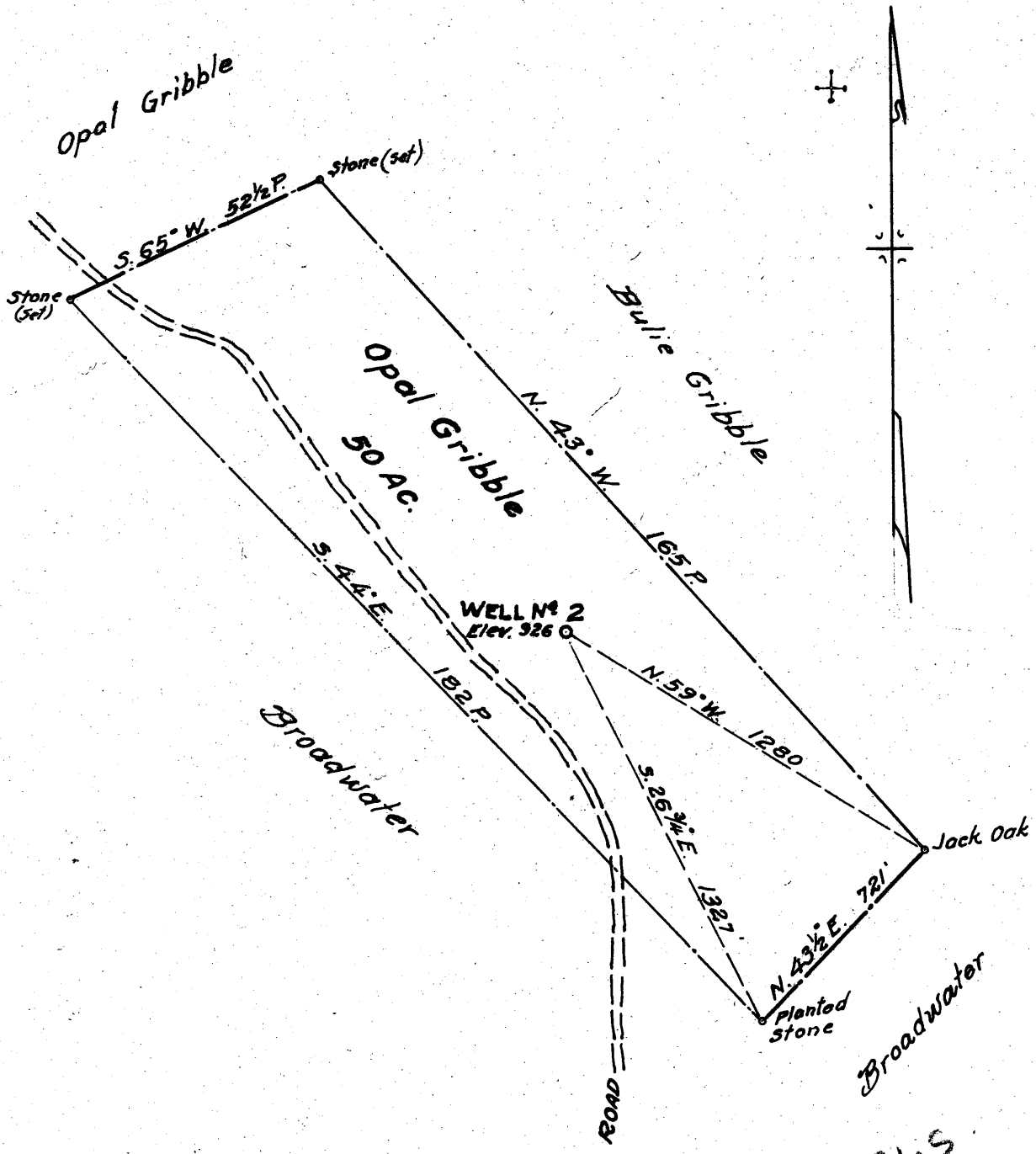


Latitude 39° 15'

Longitude 80° 50'



2.36 S  
1.69 W

New Location    
 Drill Deeper    
 Abandonment

Company Jewel Oil Co., W.T Wright, Agt   
 Address 1118 Offner St, Portsmouth, Ohio   
 Farm Opal Gribble   
 Tract 1 Acres 50 Lease No. \_\_\_\_\_   
 Well (Farm) No. 2 Serial No. \_\_\_\_\_   
 Elevation (Spirit Level) 926   
 Quadrangle Holbrook NC   
 County Doddridge District Southwest   
 Engineer Parker E. Peters   
 Engineer's Registration No. 485   
 File No. \_\_\_\_\_ Drawing No. \_\_\_\_\_   
 Date May 30, 1962 Scale 1" = 30P

STATE OF WEST VIRGINIA  
 DEPARTMENT OF MINES  
 OIL AND GAS DIVISION  
 CHARLESTON

WELL LOCATION MAP  
 FILE NO. Doc-812

+ Denotes location of well on United States Topographic Maps, scale 1 to 62,500, latitude and longitude lines being represented by border lines as shown.

— Denotes one inch spaces on border line of original tracing.