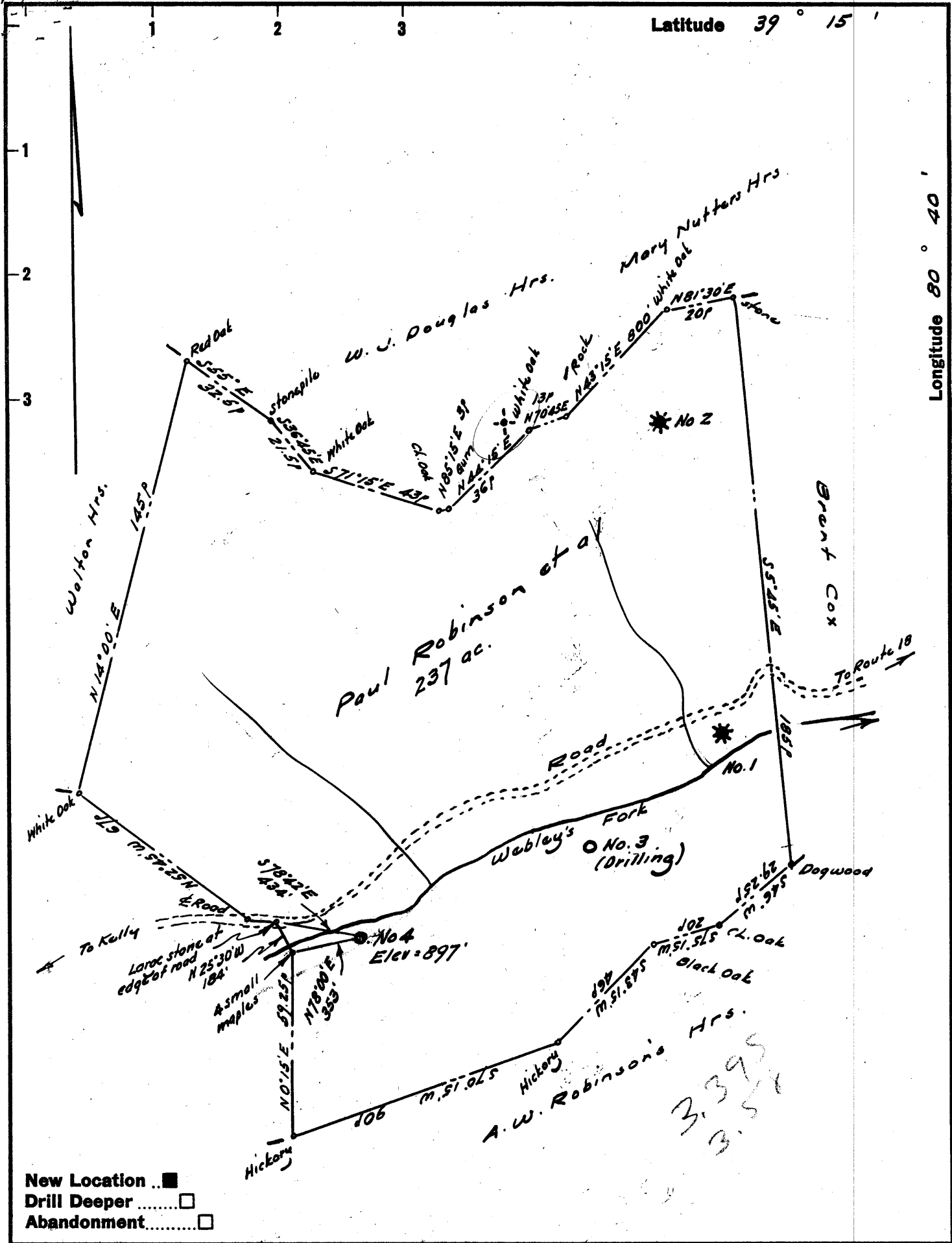


Latitude 39° 15'

Longitude 80° 40'



New Location ..    
 Drill Deeper .....    
 Abandonment .....

Company MEALESTER FUEL CO. & R. G. LAWTON  
 Address Magnolia, Arkansas  
 Farm Paul Robinson, et al  
 Tract \_\_\_\_\_ Acres 237 Lease No. \_\_\_\_\_  
 Well (Farm) No. Four Serial No. \_\_\_\_\_  
 Elevation (Spirit Level) 897'  
 Quadrangle Kadis NW  
 County Doddridge District New Milton  
 Engineer W. S. Street Jr.  
 Engineer's Registration No. 1227  
 File No. \_\_\_\_\_ Drawing No. \_\_\_\_\_  
 Date June 1962 Scale 1" = 400' = 660'

STATE OF WEST VIRGINIA  
 DEPARTMENT OF MINES  
 OIL AND GAS DIVISION  
 CHARLESTON

**WELL LOCATION MAP**  
 FILE NO. Dod-811

+ Denotes location of well on United States Topographic Maps, scale 1 to 82,500, latitude and longitude lines being represented by border lines as shown.  
 - Denotes one inch spaces on border line of original tracing.



STATE OF WEST VIRGINIA  
DEPARTMENT OF MINES  
OIL AND GAS DIVISION 9

Quadrangle Vadis

Permit No. Dod 811

WELL RECORD

Oil or Gas Well Oil & Gas  
(KIND)

Company McAlester Fuel Company  
Address Magnolia, Arkansas  
Farm Paul Robinson Acres 237  
Location (waters) \_\_\_\_\_  
Well No. #4 Elev. 897  
District New Milton County Boddridge  
The surface of tract is owned in fee by Paul Robinson et al  
Salem Address W.Va.  
Mineral rights are owned by Paul Robinson et al  
Salem Address W.Va.  
Drilling commenced June 14, 1962  
Drilling completed July 27, 1962  
Date Shot \_\_\_\_\_ From \_\_\_\_\_ To \_\_\_\_\_  
With \_\_\_\_\_  
Open Flow /10ths Water in \_\_\_\_\_ Inch  
/10ths Merc. in \_\_\_\_\_ Inch  
Volume \_\_\_\_\_ Cu. Ft.  
Rock Pressure \_\_\_\_\_ lbs. \_\_\_\_\_ hrs.  
Oil \_\_\_\_\_ bbls., 1st 24 hrs.  
WELL ACIDIZED \_\_\_\_\_  
WELL FRACTURED Yes

| Casing and Tubing | Used in Drilling | Left in Well | Packers        |
|-------------------|------------------|--------------|----------------|
| Size              |                  |              | Kind of Packer |
| 16                | 28               | 28           |                |
| 13                |                  |              |                |
| 10                | 347              |              | Size of        |
| 8 1/4             | 1072             |              |                |
| 6 5/8             | 2565             | 2565         | Depth set      |
| 5 3/16            |                  |              |                |
| 3                 |                  |              | Perf. top      |
| 2                 |                  |              | Perf. bottom   |
| Liners Used       |                  |              | Perf. top      |
|                   |                  |              | Perf. bottom   |

CASING CEMENTED twice-167 sks. cement, -HALLIBURTON SIZE \_\_\_\_\_ No. Ft. \_\_\_\_\_ Date \_\_\_\_\_  
COAL WAS ENCOUNTERED AT \_\_\_\_\_ FEET \_\_\_\_\_ INCHES  
\_\_\_\_\_ FEET \_\_\_\_\_ INCHES FEET \_\_\_\_\_ INCHES  
\_\_\_\_\_ FEET \_\_\_\_\_ INCHES FEET \_\_\_\_\_ INCHES

RESULT AFTER TREATMENT Big Injun 40 bbl. with 250,000 gas; 30 Ft. Sand 50 bbl. = 90 bbls. - 01  
ROCK PRESSURE AFTER TREATMENT 450 24 hours  
Fresh Water 30'-40' Feet Salt Water 1200' - 1320' Feet

| Formation      | Color | Hard or Soft | Top  | Bottom | Oil, Gas or Water | Depth | Remarks  |
|----------------|-------|--------------|------|--------|-------------------|-------|----------|
| Soil           |       |              | 0    |        |                   |       |          |
| Soil           | Red   |              | 9    | 5      |                   |       |          |
| Sand           |       |              | 5    | 30     |                   |       | water    |
| Shale          | Red   |              | 30   | 40     |                   |       |          |
| Sand           | White |              | 40   | 70     |                   |       |          |
| Slate and rock | Red   |              | 70   | 127    |                   |       |          |
| Rock           | Red   |              | 127  | 149    |                   |       |          |
| Slate          | Red   |              | 149  | 160    |                   |       |          |
| Shale and sand | Green |              | 160  | 227    |                   |       |          |
| Lime           |       |              | 227  | 250    |                   |       |          |
| Shale          | Red   |              | 250  | 255    |                   |       |          |
| Sand           |       |              | 255  | 305    |                   |       |          |
| Shale          |       |              | 305  | 380    |                   |       |          |
| Lime           |       |              | 380  | 474    |                   |       |          |
| Slate          |       |              | 474  | 488    |                   |       |          |
| Shale          | Red   |              | 488  | 585    |                   |       |          |
| Sand           |       |              | 585  | 675    |                   |       |          |
| Shale          |       |              | 675  | 695    |                   |       |          |
| Shale          |       |              | 695  | 710    |                   |       |          |
| Lime           |       |              | 710  | 730    |                   |       |          |
| Rock           | Red   |              | 730  | 742    |                   |       |          |
| Shale          |       |              | 742  | 758    |                   |       |          |
| Slate          | Black |              | 758  | 835    |                   |       |          |
| Shale          |       |              | 835  | 995    |                   |       |          |
| Lime           |       |              | 995  | 1070   |                   |       |          |
| Sand           |       |              | 1070 | 1100   |                   |       |          |
| Shale          |       |              | 1100 | 1152   |                   |       |          |
| Lime           | Brown |              | 1152 | 1280   |                   |       |          |
| Sand           |       |              | 1280 | 1290   |                   |       |          |
|                |       |              | 1290 | 1320   | Water             | 1310  | 2 bb/hr. |



| Formation  | Color | Hard or Soft | Top 9 | Bottom | Oil, Gas or Water | Depth Found | Remarks |
|--|-------|--------------|-------|--------|-------------------|-------------|---------|
| Slate  |       |              | 1320  | 1474   |                   |             |         |
| Lime   |       |              | 1474  | 1481   |                   |             |         |
| Slate  |       |              | 1481  | 1510   |                   |             |         |
| Sand   |       |              | 1510  | 1517   |                   |             |         |
| Slate  |       |              | 1517  | 1527   |                   |             |         |
| Sand   |       |              | 1527  | 1578   |                   |             |         |
| Slate  |       |              | 1578  | 1722   |                   |             |         |
| Rock   |       |              | 1722  | 1734   |                   |             |         |
| Shale  |       |              | 1734  | 1750   |                   |             |         |
| Sand   |       |              | 1750  | 1760   |                   |             |         |
| Slate  |       |              | 1760  | 1768   |                   |             |         |
| Lime   |       |              | 1768  | 1785   |                   |             |         |
| Slate  |       |              | 1785  | 1789   |                   |             |         |
| Little Lime  |       |              | 1789  | 1792   |                   |             |         |
| Blue Mandy   |       |              | 1792  | 1810   |                   |             |         |
| Big Lime   |       |              | 1810  | 1870   | Gas               | 1910        |         |
| Sand Injun   |       |              | 1870  | 1960   | Oil               | 1939-1954   |         |
| Slate and shells   |       |              | 1960  | 2030   |                   |             |         |
| Slate  |       |              | 2030  | 2092   |                   |             |         |
| Weir Sand  |       |              | 2092  | 2218   |                   |             |         |
| Shale and shells   |       |              | 2218  | 2508   |                   |             |         |
| 30 ft sand   |       |              | 2508  | 2516   | Oil               | 2508-2516   |         |
| slate  |       |              | 2516  | 2645   |                   |             |         |
|  |       |              | 2645  |        |                   |             |         |
| <p>Perforated with 4 1/2" Vari Jets:<br/> 20 holes from 2537 to 2539<br/> 8 holes from 1932 to 1934<br/> 8 holes from 1948 to 1960<br/> #d Baker retainer production packer set at 1970<br/> #3B Baker plug set at 1967<br/> Perforated with tornado jets; 2 holes at 1933 and 2 holes at 1959</p> |       |              |       |        |                   |             |         |

Date October 22, 19 62

McAlester Fuel Company

APPROVED \_\_\_\_\_, Owner

By \_\_\_\_\_  
(Field Representative)