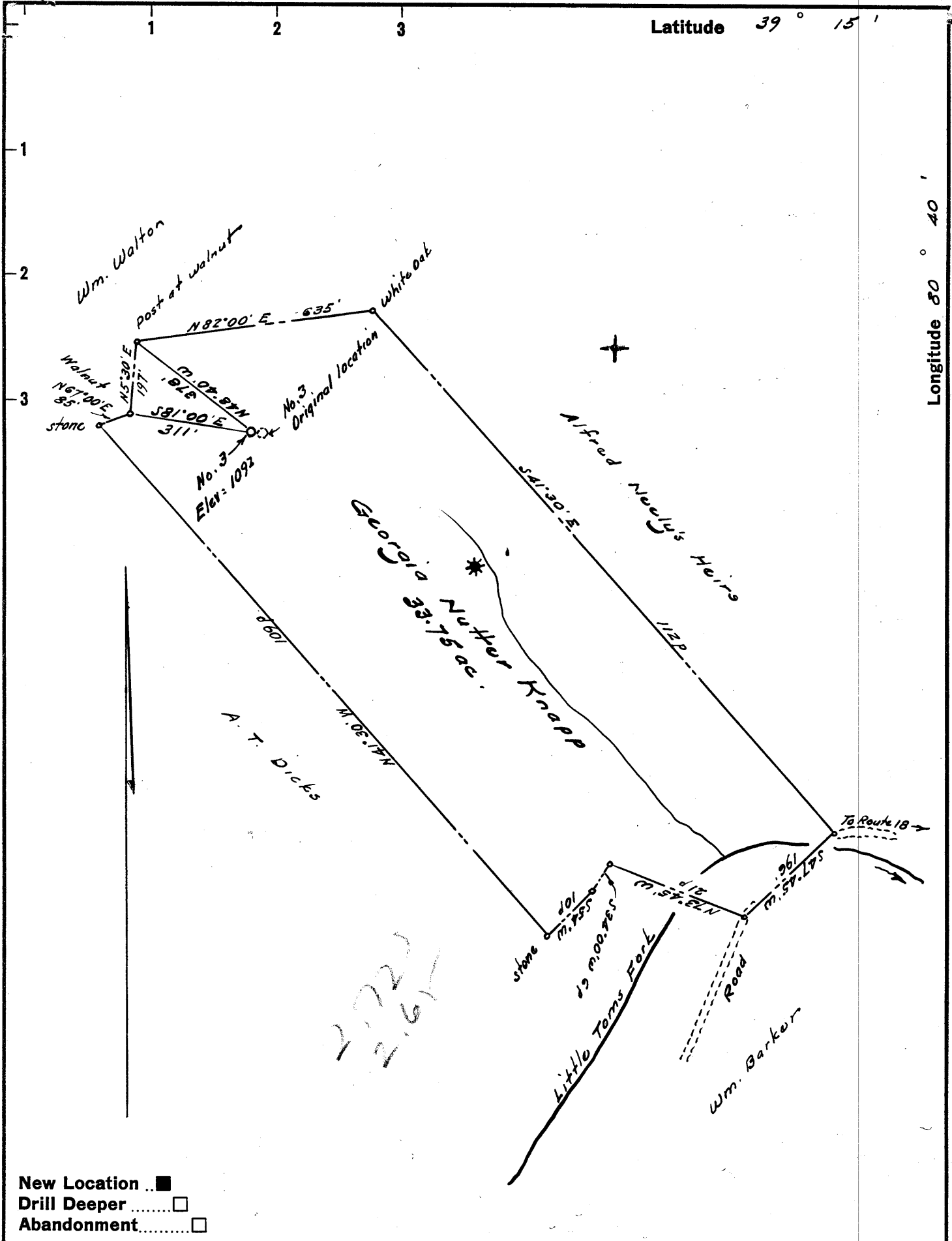


Latitude 39° 15'

Longitude 80° 40'



New Location ..
 Drill Deeper
 Abandonment.....

Company KNAPP OIL & GAS CO.
 Address c/o W. H. Messer, Harrisville, West Va.
 Farm Georgia Nutter Knapp
 Tract _____ Acres 33.75 Lease No. _____
 Well (Farm) No. 3 (New Location) Serial No. 030160
 Elevation (Spirit Level) 1092-1065-1124-754-000
 Quadrangle Vadis NW corner
 County Doddridge District New Milton
 Engineer Messinger
 Engineer's Registration No. 1227
 File No. _____ Drawing No. _____
 Date Nov. 3, 1962 Scale 1" = 200' = 330'

STATE OF WEST VIRGINIA
 DEPARTMENT OF MINES
 OIL AND GAS DIVISION
 CHARLESTON

WELL LOCATION MAP
 FILE NO. DDO-810-REVISED

+ Denotes location of well on United States
 Topographic Maps, scale 1 to 62,500, lat-
 itude and longitude lines being represented
 by border lines as shown.

- Denotes one inch spaces on border line
 of original tracing.



STATE OF WEST VIRGINIA
DEPARTMENT OF MINES
OIL AND GAS DIVISION 5

Rotary
Spudder
Cable Tools
Storage

Quadrangle Vadis

WELL RECORD

Permit No. DOD 810

Oil or Gas Well Both
(KIND)

Company Knapp Well No. 3
Address W.H.Mossor; Box 204, Harrisville, W.Va.
Farm Georgia Knapp Acres 33
Location (waters) Toms Fork of Middle Island Creek
Well No. Three (3) Elev. 1088
District New Milton County Doddridge
The surface of tract is owned in fee by Georgia Knapp
Address Clarksburg, W.Va.
Mineral rights are owned by Georgia Knapp
Address Clarksburg, W.Va.

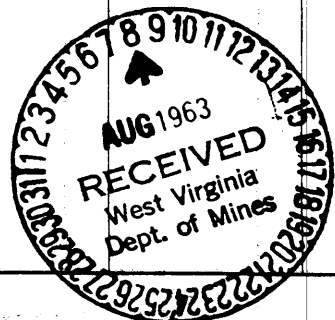
Casing and Tubing	Used in Drilling	Left in Well	Packers
Size			Kind of Packer
16		16	
13			
10	216		Size of
8 3/4	1213		
6 3/4			Depth set
5 3/16			
xx 1 1/2"		2132	Perf. top 2082
2			Perf. bottom 2086
Liners Used			Perf. top 2092
			Perf. bottom 2098

Drilling commenced 9/6/62
Drilling completed 12/10/62
Date Shot Not shot From _____ To _____
With _____
Open Flow 2.7 /10ths Water in _____ Inch
1 /10ths Merc. in _____ Inch
Volume 200,000 Cu. Ft.
Rock Pressure 300 lbs. 24 hrs.
Oil 10 bbls., 1st 24 hrs.
WELL ACIDIZED _____

CASING CEMENTED 1 1/2" SIZE 2132 No. Ft. 16/63 Date
By Lawson: 140 Cement, 12 Baroid, 6 Aquagel
15 lime 15 lime.
COAL WAS ENCOUNTERED AT None FEET _____ INCHES
_____ FEET _____ INCHES
_____ FEET _____ INCHES

WELL FRACTURED 5/2/63 by Western Company: 36,288 gal. treated water; 60,000 lb. 20/40 sand;
250 gal. reg. acid; Max. pressure 2200
RESULT AFTER TREATMENT 250,000 open flow; 100 BOPD
ROCK PRESSURE AFTER TREATMENT 350 lb. 24 hrs.
Fresh Water _____ Feet _____ Salt Water _____ Feet _____

Formation	Color	Hard or Soft	Top	Bottom	Oil, Gas or Water	Depth	Remarks
Clay			0	26			
Sand			26	50			
Slate & shells			50	125			
Red rock			125	165			
Slate			165	175			
Red rock			175	260			
Slate			260	290			
Sand			290	320			
Slate			320	360			
Red rock			360	375			
Sand			375	385			
Slate			385	407			
Red rock			407	462			
Sand			462	475			
Slate			475	490			
Sand			490	525			
Slate			525	730			
Red rock			730	755			
Lime			755	770			
Red rock			770	790			
Sand			790	830			
Slate			830	875			
Red rock			875	896			
Slate			896	1080			
Lime			1080	1105			
Slate			1105	1140			
Sand			1140	1190			
Slate			1190	1217			
Sand			1217	1290			
Slate & shells			1290	1420			



Formation	Color	Hard or Soft	Top	Bottom	Oil, Gas or Water	Depth Found	Remarks
Sand			1420	1520			
Slate & shells			1520	1555			
Lime			1555	1575			
Slate			1575	1637			
Sand			1637	1725			
Slate			1725	1865			
Lime			1865	1874			
Slate			1874	1895			
Lime			1895	1915			
Slate			1915	1920			
Lime			1920	1925			
Sand			1925	1945			
Lime			1945	1990			
Sand			1990	2095	Show Oil & gas	1990 to 2005	
Slate			2095	2132	Gas	2015 to 2022	
Total Depth:			2132				

Date August 7, 1963

APPROVED

John W. Mossor

By John W. Mossor, Drilling Engineer
(Title)