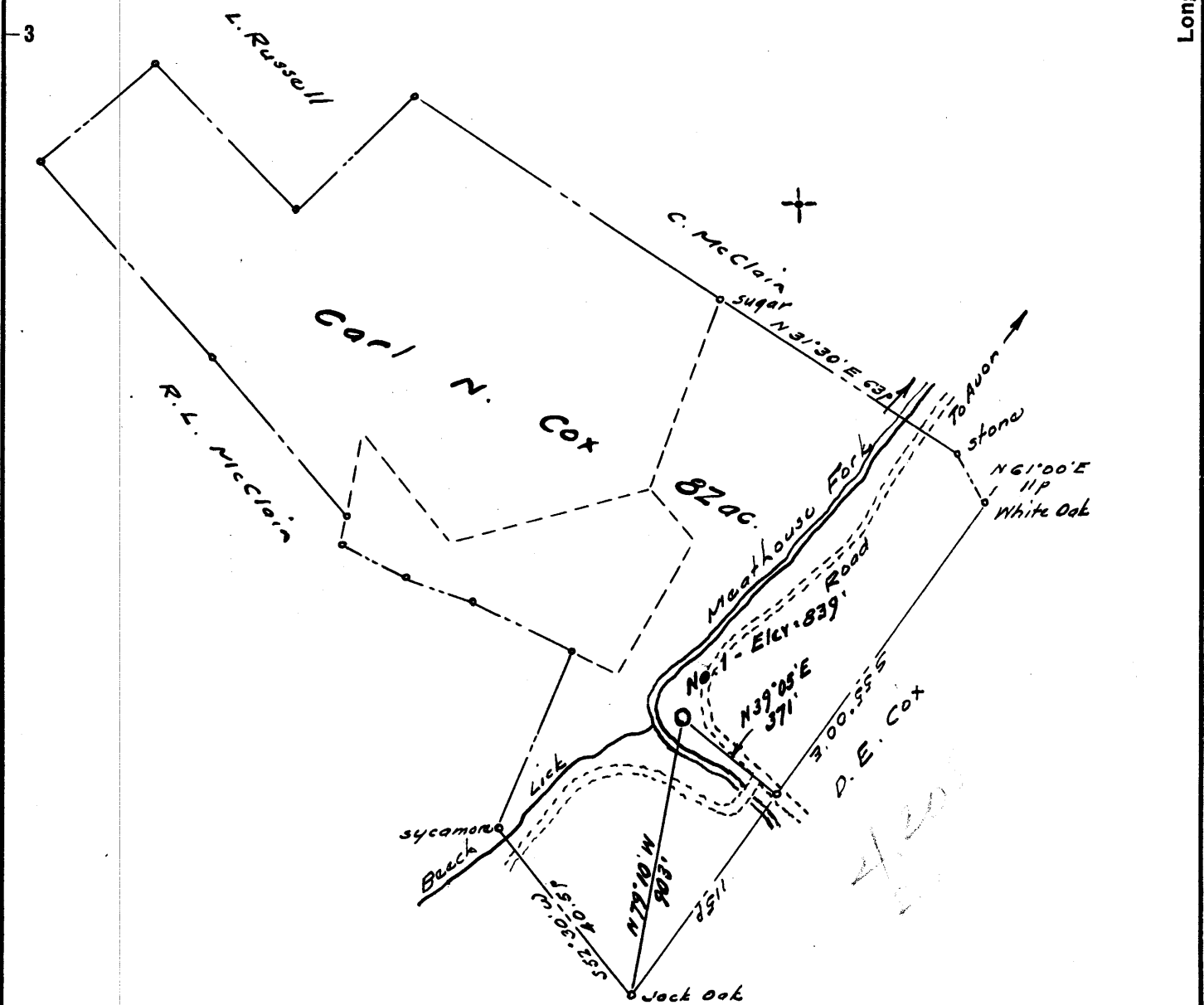


1 2 3

Latitude 39° 15'

Longitude 80° 35'

1  
2  
3



New Location ..    
 Drill Deeper .....    
 Abandonment.....

Company TRIO OIL & GAS CO.  
 Address 9/2 Paul Davis, West Union, West Va.  
 Farm Carl N. Cox  
 Tract \_\_\_\_\_ Acres 82 Lease No. \_\_\_\_\_  
 Well (Farm) No. One Serial No. \_\_\_\_\_  
 Elevation (Spirit Level) 839  
 Quadrangle Kadis NC  
 County Doddridge District Greenbrier  
 Engineer Mustard Sp  
 Engineer's Registration No. 1227  
 File No. \_\_\_\_\_ Drawing No. \_\_\_\_\_  
 Date May 1962 Scale 1" = 300' = 495'

STATE OF WEST VIRGINIA  
 DEPARTMENT OF MINES  
 OIL AND GAS DIVISION  
 CHARLESTON

**WELL LOCATION MAP**  
 FILE NO. Dod - 801

+ Denotes location of well on United States Topographic Maps, scale 1 to 62,500, latitude and longitude lines being represented by border lines as shown.  
 - Denotes one inch spaces on border line of original tracing.



STATE OF WEST VIRGINIA  
DEPARTMENT OF MINES  
OIL AND GAS DIVISION 4

Quadrangle Vadis

Permit No. DOD-801

**WELL RECORD**

Oil or Gas Well Dry  
(KIND)

Company Trio Oil and Gas Co.  
 Address c/o Paul Davis, West Union, W. Va.  
 Farm Carl N. Cox Acres 82  
 Location (waters) Beech Run  
 Well No. 1 Elev. 839'  
 District Greenbrier County Doddridge  
 The surface of tract is owned in fee by Carl N. Cox,  
Route (Rural) Address Salem, W. Va.  
 Mineral rights are owned by Carl N. Cox,  
Rural Route Address Salem, W. Va.  
 Drilling commenced 6-25-62  
 Drilling completed 8-2-62  
 Date Shot From \_\_\_\_\_ To \_\_\_\_\_  
 With \_\_\_\_\_  
 Open Flow /10ths Water in \_\_\_\_\_ Inch  
 /10ths Merc. in \_\_\_\_\_ Inch  
 Volume \_\_\_\_\_ Cu. Ft.  
 Rock Pressure \_\_\_\_\_ lbs. \_\_\_\_\_ hrs.  
 Oil \_\_\_\_\_ bbls., 1st 24 hrs.  
 WELL ACIDIZED \_\_\_\_\_  
 WELL FRACTURED NO

Casing and Tubing	Used in Drilling	Left in Well	Packers
Size			Kind of Packer
16			
13			
10	537'	537'	Size of
8*	1073 1/2	1073 1/2	
6 5/8			Depth set
5 3/16			
3			Perf. top
2			Perf. bottom
Liners Used			Perf. top
			Perf. bottom
<u>18' of 16" conductor</u>			

CASING CEMENTED \_\_\_\_\_ SIZE \_\_\_\_\_ No. Ft. \_\_\_\_\_ Date \_\_\_\_\_  
 COAL WAS ENCOUNTERED AT from 501' to 507'  
 FEET FEET INCHES INCHES  
 FEET INCHES FEET INCHES  
 FEET INCHES FEET INCHES

RESULT AFTER TREATMENT \_\_\_\_\_

ROCK PRESSURE AFTER TREATMENT \_\_\_\_\_

Fresh Water 30 Feet \_\_\_\_\_ Salt Water \_\_\_\_\_ Feet \_\_\_\_\_

Formation	Color	Hard or Soft	Top	Bottom	Oil, Gas or Water	Depth	Remarks
Soil			0	6			
Sand			6	30			Hole full of water at 30'
Red Rock			30	150			
Slate			150	340			
Red Rock			340	425			
Slate			524	470			
Lime			470	495			
Slate			495	501			
Coal			501	507			
Slate			507	535			
Lime			535	620			
Red Rock			620	640			
Lime			640	660			
Slate			660	680			
Red Rock			680	690			
Lime			690	705			
Red Rock			705	765			
Lime			765	791			
Red Rock			791	810			
Sand			810	820			
Red Rock			820	865			
Pink Rock			865	885			
Sand			885	905			
Slate & Shells			905	960			
Sand			960	1020			
Shale			1020	1055			
Red Rock			1055	1060			(over)
Shale			1060	1124			



Formation	Color	Hard or Soft	Top <sup>4</sup>	Bottom	Oil, Gas or Water	Depth Found	Remarks
Sand			1124	1140			
Slate			1140	1150			
Lime			1150	1157			
Sand & Shale			1157	1175			
dark shale			1175	1237			
Shale-shells			1237	1275			
Sandy shale			1275	1285			
Slate & Shells			1285	1384			
Shale - dark			1384	1400			
Sand			1400	1428			
Shale			1428	1465			
Sand			1465	1505			
Lime			1505	1510			
Shale			1510	1525			
Lime			1525	1530			
Sand			1530	1587			
Shale			1587	1660			
Pink Rock			1660	1685			
Slate & Shells			1685	1697			
Pink Rock			1697	1730			
Shale			1730	1793			
Lime			1793	1803			
Shale			1803	1830			
Little Lime			1830	1864			
Pencil Cave			1864	1868			
Big Lime			1868	1930			
Big Injun			1930	2016			
Shale			2016	2054			
Weir Sand			2054	2164			
Shale			2164	2210			
Lime			2210	2250			
Shale			2250	2286			
Berea			2286	2348			
Slate & Shells			2348	2400			
Broken Sand			2400	2408			
Shale			2408	2500			
Broken Sand			2500	2526			
Shale & Shells			2526	2643			
Broken Sand			2643	2670			
Lime Shells			2670	2822			
			Total Depth	2822			
					Showing of oil at 2648'		
					Showing of oil & gas		
					2648' to 2657		
					Gas 2668 - 2677		

Date \_\_\_\_\_, 19\_\_\_\_

APPROVED \_\_\_\_\_, Owner

By \_\_\_\_\_ (Title)