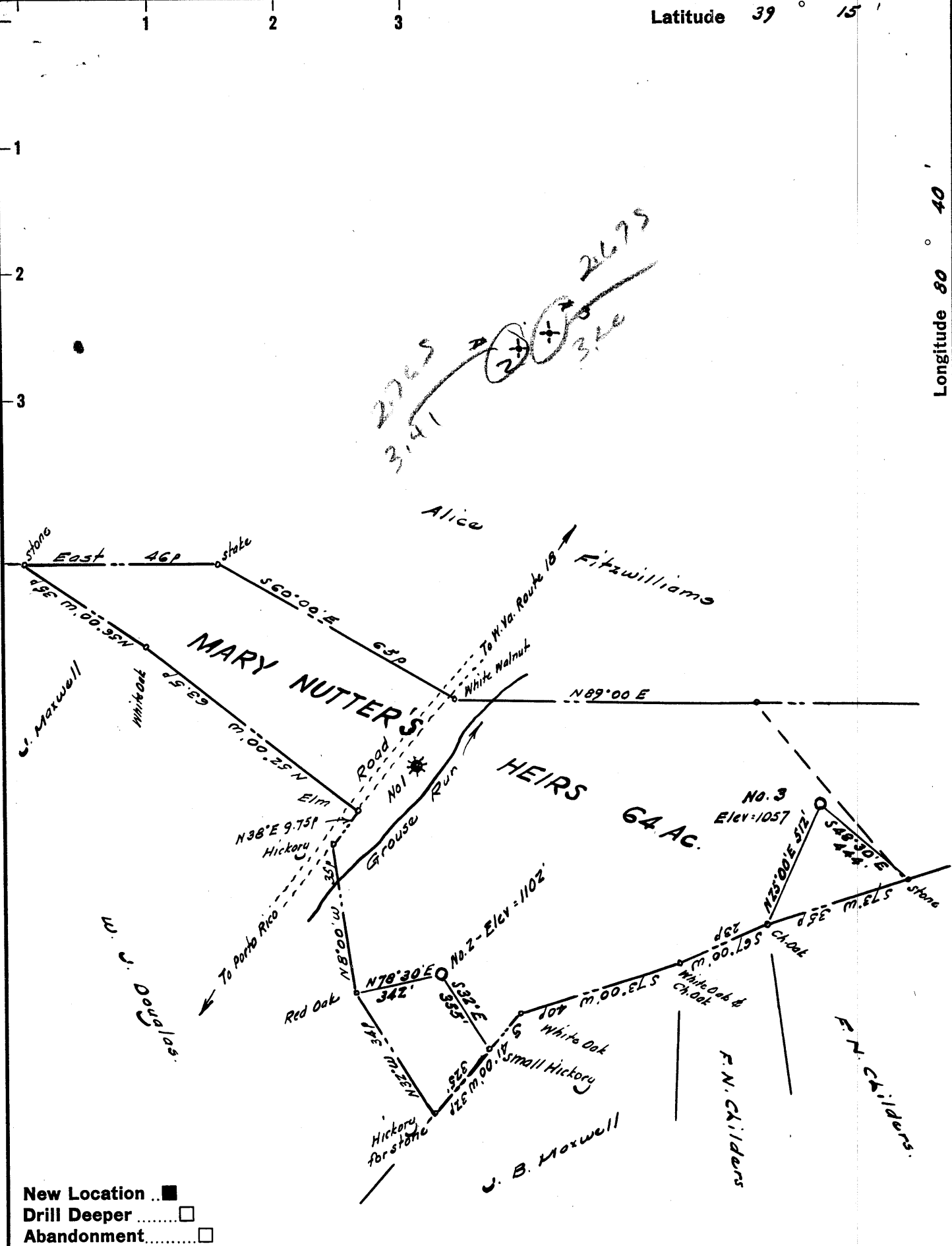


Latitude 39° 15'

Longitude 80° 40'



Company **TRIO OIL & GAS CO.**
 Address West Union, West Va.
 Farm Mary Nutters Heirs
 Tract _____ Acres 64 Lease No. _____
 Well (Farm) No. Two & Three Serial No. _____
 Elevation (Spirit Level) No. 2 - 1102 No. 3 - 1057
 Quadrangle Vadie NW
 County Doddridge District New Milton
 Engineer [Signature]
 Engineer's Registration No. 1227
 File No. _____ Drawing No. _____
 Date May 1962 Scale 1" = 30p

STATE OF WEST VIRGINIA
 DEPARTMENT OF MINES
 OIL AND GAS DIVISION
 CHARLESTON

WELL LOCATION MAP
 FILE NO. Dod - 797 - #2-P
Dod - 798 - #3-TCP

+ Denotes location of well on United States Topographic Maps, scale 1 to 62,500, latitude and longitude lines being represented by border lines as shown.

- Denotes one inch spaces on border line of original tracing.